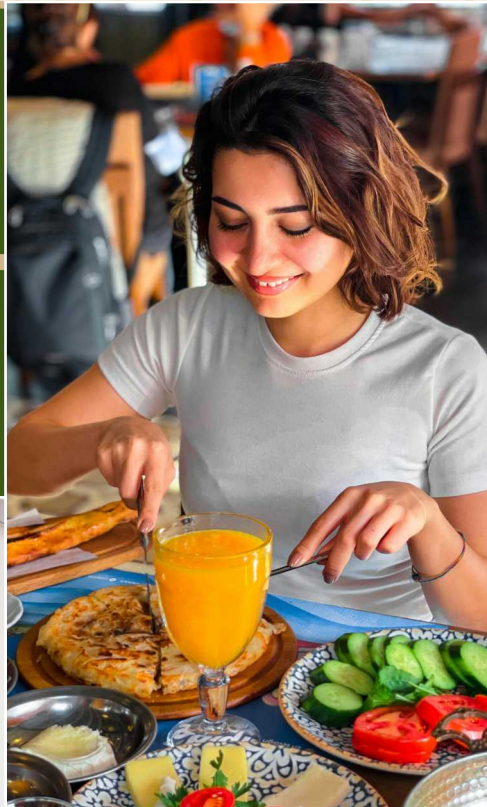


# Six Oaks

18333 Bothell Way NE #107,  
Bothell, WA 98011



Retail/Office Space Available  
in Downtown Bothell

→ **1,515 SF**



**REAL RETAIL**

# Welcome to Bothell

Bothell is a growing innovation and education hub at the northern edge of the Seattle metro area. Known for its blend of biotech, engineering, and research-driven companies, it's anchored by institutions like the University of Washington Bothell and major employers in health and life sciences. The city combines a revitalized downtown, riverfront parks, and strong community investment to attract both businesses and residents seeking a balance of opportunity and livability. Retail co-tenants include Ladro's Cafe, Poquitos, Amaro Bistro, and Daily Grind Coffee Shop.



10-Minute Drive Time		
	<b>207,991</b>	Population
	<b>\$177,428</b>	AHHI
	<b>59%</b>	Bachelors +
	<b>84,795</b>	Employees



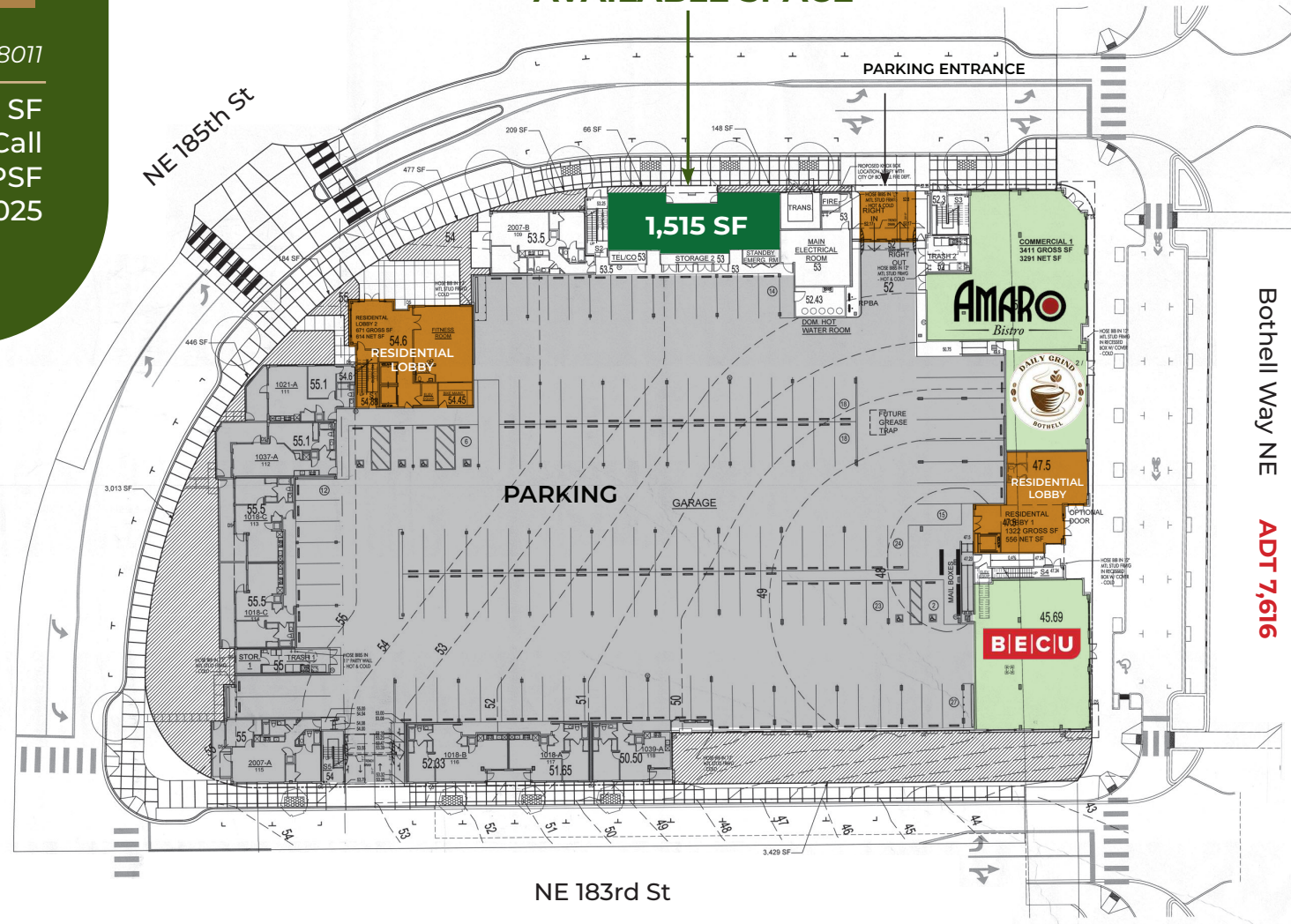
# Project Details

18333 Bothell Way NE #107, Bothell, WA 98011

Available Space ..... 1,515 SF  
 Rent ..... Please Call  
 NNN's ..... Approx. \$9.19/PSF  
 Availability ..... Aug. 1, 2025

This 2nd generation space is located within Six Oaks, a 203-unit mixed-use apartment community in the heart of downtown Bothell. Just one block south of McMenamins, it's ideal for retail, office, med-spa, wellness, or boutique fitness use, with strong visibility and built-in foot traffic from residents and visitors.

## AVAILABLE SPACE



Bothell Way NE  
 ADT 7,616

## REAL RETAIL

**Maria Royer**  
 (206)-464-0600  
 mroyer@real-retail.net

**Eric Zuehlsdorff**  
 (808)-221-1134  
 eric@real-retail.net

This information supplied herein has been secured from sources believed to be reliable; however, no representations are made to its accuracy. Prospective tenants or buyers should consult their professional advisors and conduct their own independent investigation. Properties are subject to change in price and/or availability without notice.