

# RIVERTON DISTRIBUTION CENTER

BUILDING B | 915 S 96TH ST | SEATTLE, WA

FOR LEASE

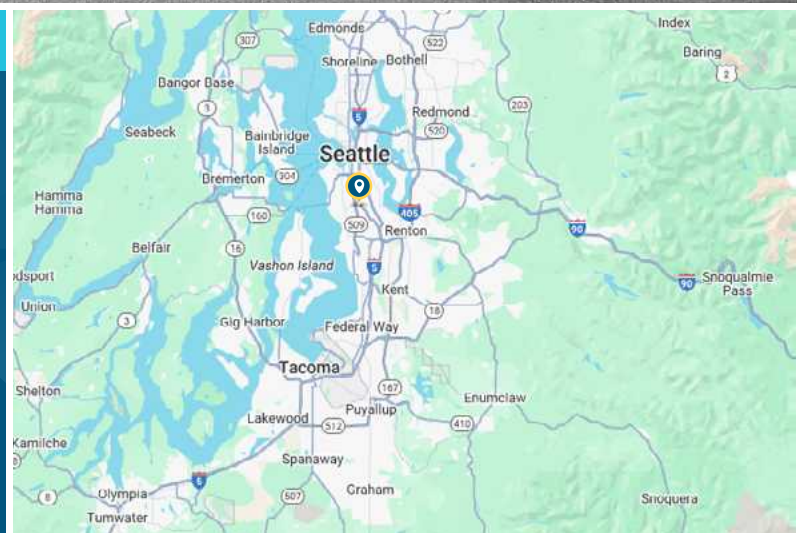
76,280 SF

## RARE MODERN LAST MILE DISTRIBUTION CENTER



### LEASE INFORMATION

- $\pm$  76,280 SF Total
- $\pm$  1,450 SF Office
- 30' clear height
- 14 dock-high doors (fully equipped)
- 2 grade-level doors
- 1,200A, 277/480V, 3-Phase power
- ESFR sprinkler system
- Fenced truck court



**TONY KUSAK, SIOR**  
206.787.1465  
tkusak@neilwalter.com

**KERMIT JORGENSEN**  
206.787.1475  
kjorgensen@neilwalter.com

**JIM HONAN**  
206.787.1464  
jhonan@neilwalter.com

All information references in this document are approximate. The information contained herein is contained from sources deemed reliable. It is provided without representation, warranty, or guarantee, expressed or implied as to accuracy. Prospective buyer or tenant should conduct its own independent investigation relating to the property, government codes and regulations, allowed uses, and all other matters, regardless of whether they are referred to or contained in this document.



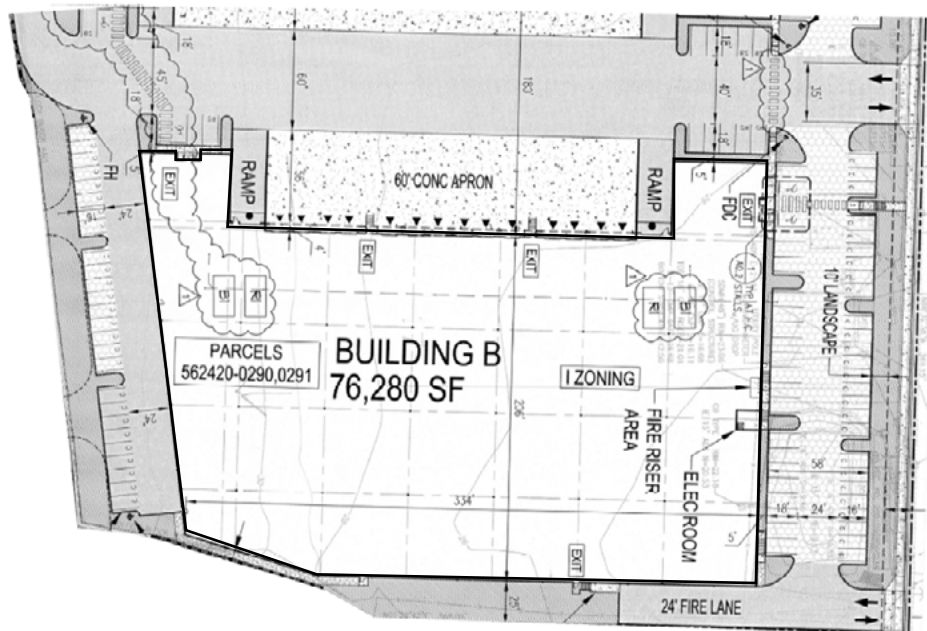
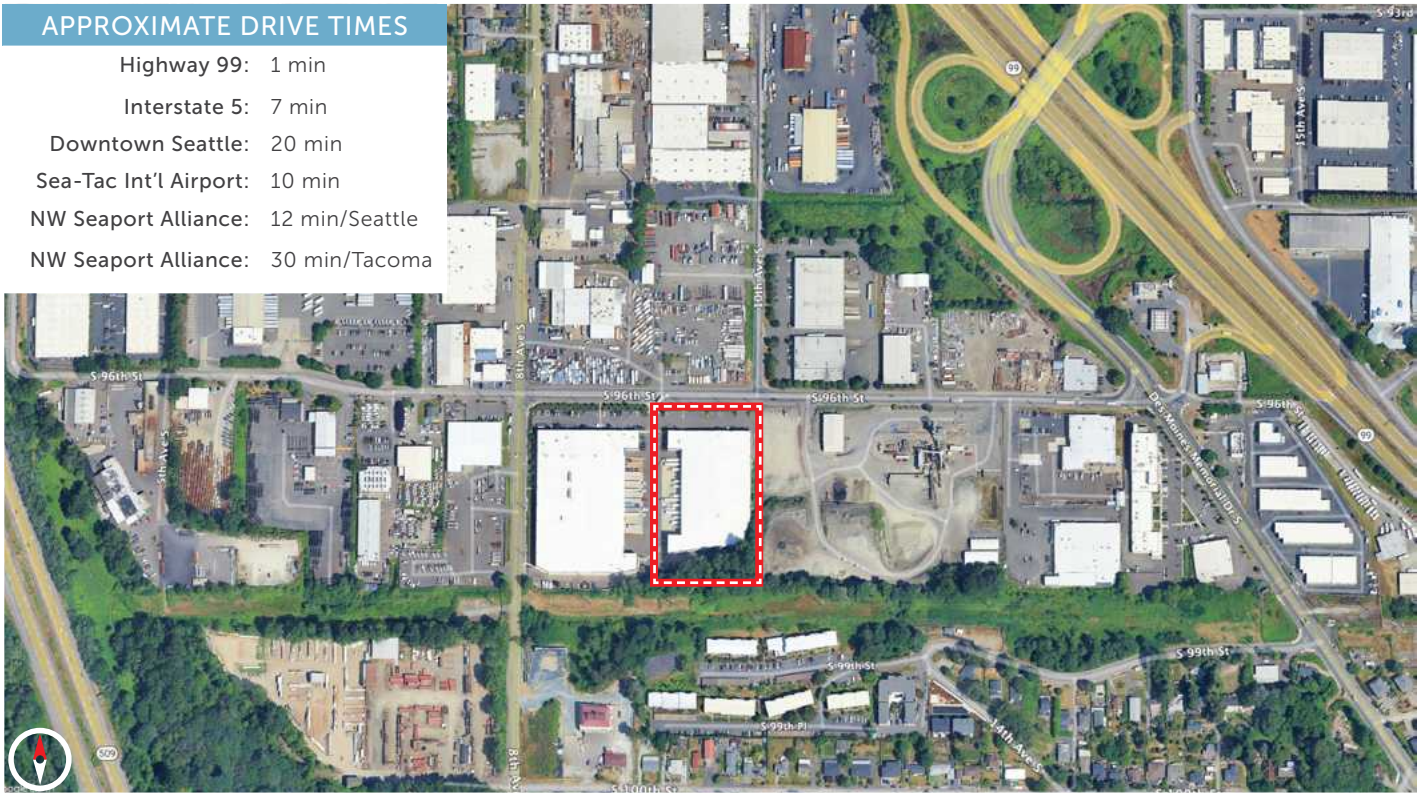
# RIVERTON DISTRIBUTION CENTER

BUILDING B | 915 S 96TH ST | SEATTLE, WA



## APPROXIMATE DRIVE TIMES

Highway 99:	1 min
Interstate 5:	7 min
Downtown Seattle:	20 min
Sea-Tac Int'l Airport:	10 min
NW Seaport Alliance:	12 min/Seattle
NW Seaport Alliance:	30 min/Tacoma



**TONY KUSAK, SIOR**  
206.787.1465  
tkusak@neilwalter.com

**KERMIT JORGENSEN**  
206.787.1475  
kjorgensen@neilwalter.com

**JIM HONAN**  
206.787.1464  
jhanan@neilwalter.com

550 S Michigan St  
Seattle, WA 98108  
206.787.1800  
www.neilwalter.com