

DAVIS COMMERCE CENTER

22727 72nd Ave S, Suite D-107 Kent, WA 98032

Available Immediately

Warehouse/Flex Space



Property Specifications

- 3,210 SF Shell (853 SF Office)
- Two private offices
- 1 GL door
- 12' clear height
- 200 Amps 120/208 volt 3-phase power
- New finishes and app controlled LED lighting

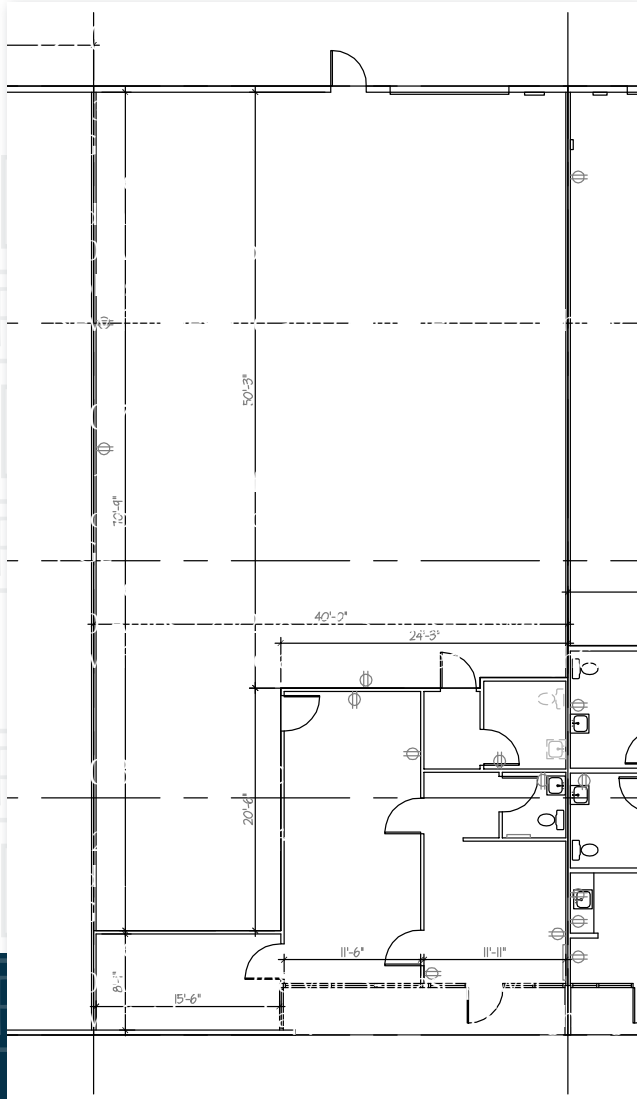
Property Features

- West Valley Highway visibility
- Excellent freeway access to Highway 167 & I-5
- Monitored video surveillance & security
- Comcast cable and fiber available



DAVIS COMMERCE CENTER

DPI Davis Property
& Investment



Contact Kidder Mathews for more info:

Travis Stanaway
206-248-6526
travis.stanaway@kidder.com

Dane Dahline
206-248-6519
dane.dahline@kidder.com

Lisa Rowe
206-777-5122
lisar@dpillc.com

The information provided in this document should be independently verified on any material matter represented herein.

Owned & Operated by:

DPI Davis Property
& Investment

Leasing by:

km Kidder
Mathews

dpillc.com