



EAST CAMPUS PLAZA

FOR LEASE

*A 6,447 SF Suite for Lease in the Resurgent Suburban
East Campus Office Market*

32129 WEYERHAEUSER WAY S | FEDERAL WAY, WA

6,447 RSF

SUITE 201

NOW

AVAILABLE

EAST CAMPUS PLAZA



*Join existing tenants in the building
such as Infusion Solutions,
Fairway Mortgage, Full Life Care,
and Fire Fighter Credit Union*

YEAR BUILT	2007
LOBBY RENOVATED	2022
TOTAL BUILDING SF	28,836 SF
SUITE 201	6,447 RSF
PARKING RATIO	4.0/1,000 SF
ZONING	OP-1 (Office)
MUNICIPALITY	City of Federal Way
CONSTRUCTION	Concrete tilt-up
RATES	Call brokers

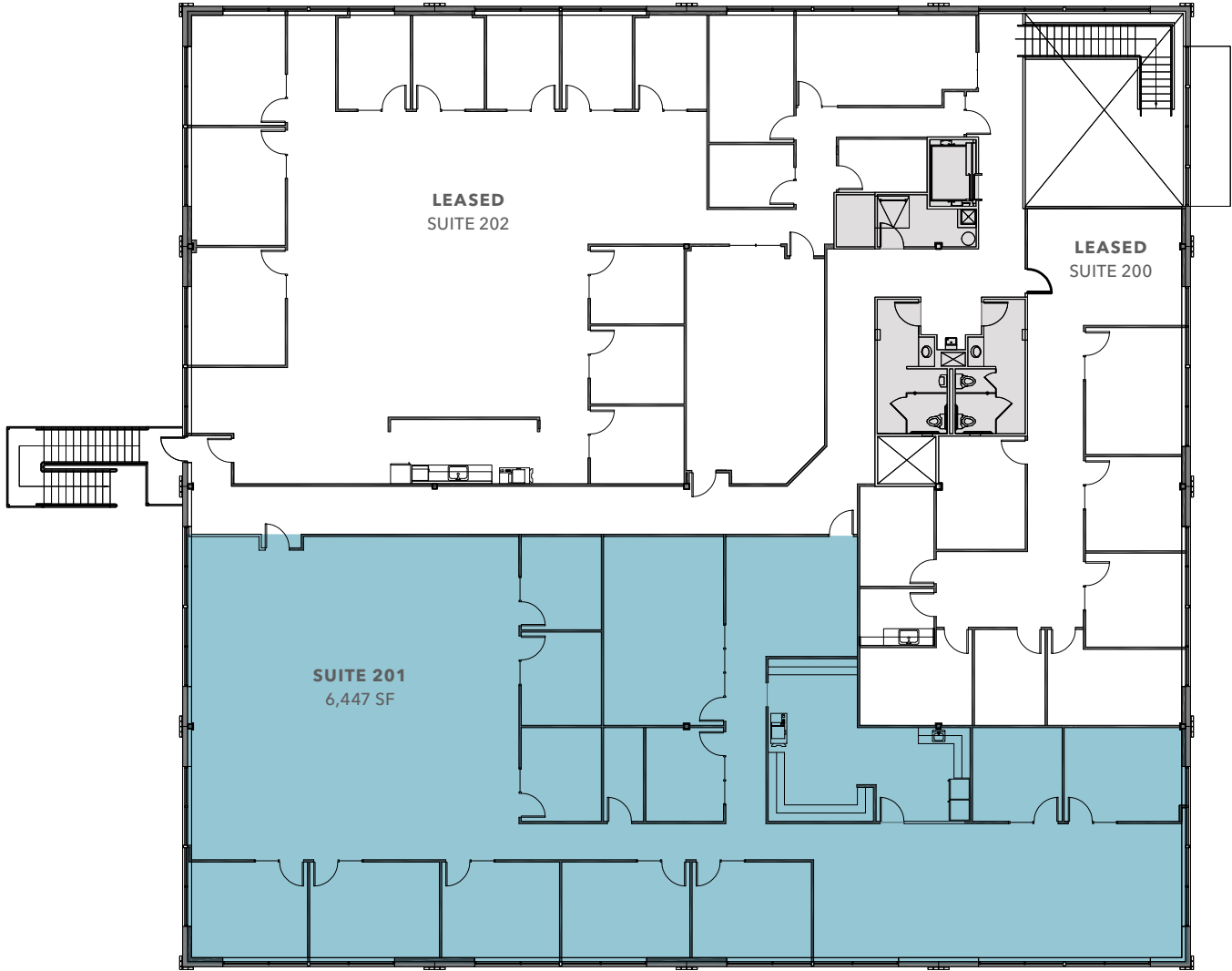
CALL
BROKERS FOR
RATES

4/1,000
PARKING RATIO

EAST CAMPUS PLAZA



SUITE 201 FLOOR PLAN



HIGHLY- ACCESSIBLE LOCATION

Conveniently located just southeast of the corner of I-5 and S 320th St in Federal Way

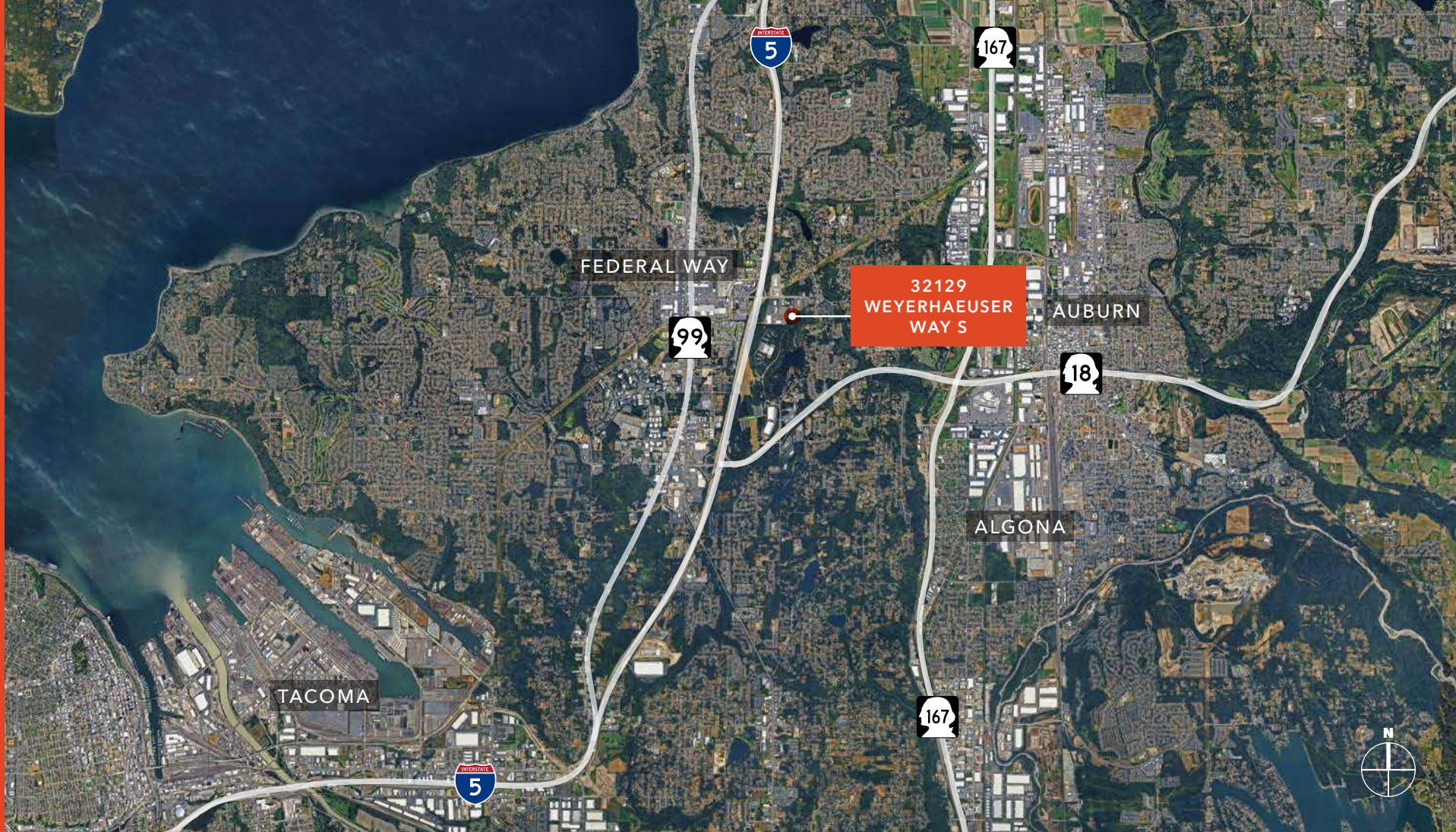
Easy access to Seattle, Tacoma, and SeaTac International Airport

Half a mile from The Commons at Federal Way for easy access to hotels, restaurants, retail, and other services

22 MI
SEATTLE

12 MI
TACOMA





For more information, contact

SPENCER CLAPP

First Vice President
206.248.7427

spencer.clapp@kidder.com

DREW FRAME, SIOR

Senior Vice President
253.722.1433

drew.frame@kidder.com

KIDDER.COM

This information supplied herein is from sources we deem reliable. It is provided without any representation, warranty, or guarantee, expressed or implied as to its accuracy. Prospective Buyer or Tenant should conduct an independent investigation and verification of all matters deemed to be material, including, but not limited to, statements of income and expenses. Consult your attorney, accountant, or other professional advisor. All Kidder Mathews designs are the sole property of Kidder Mathews. Branded materials and layouts are not authorized for use by any other firm or person.

