

FOR LEASE

Owned and Operated by 

SOUTHCENTER WEST, BUILDING B

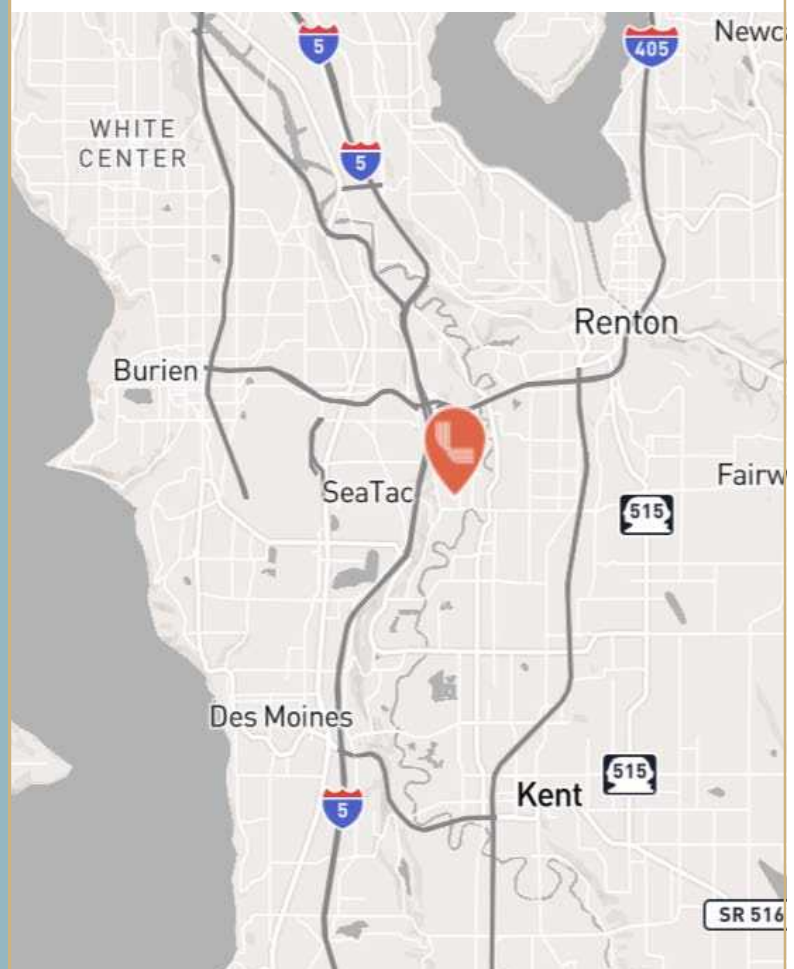
1171 Andover Park West, Tukwila, WA 98188

±12,774 SF



SPECIFICATIONS

Building available	12,774 SF
Office available	1,009 SF
Clear height	24'
Column spacing	24' x 43'
Parking	Ample
Lighting	Energy efficient LED
Power	277/480V
Location	Immediate access to I-5, I-405, & W Valley Hwy
Rate	Contact Brokers



LEASING INFO
& CONTACT

Chris Spofford
David Cahill

(425) 890-6963 / chris.spofford@jll.com
(206) 930-5599 / david.cahill@jll.com

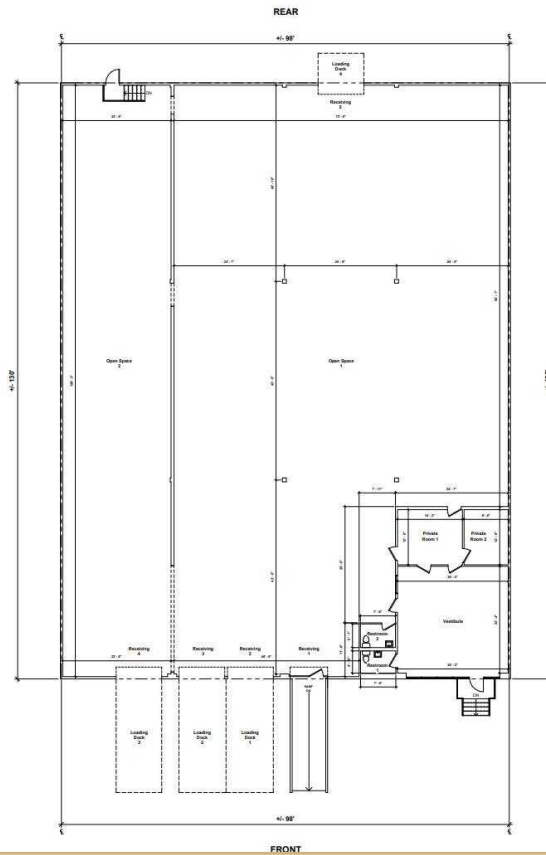
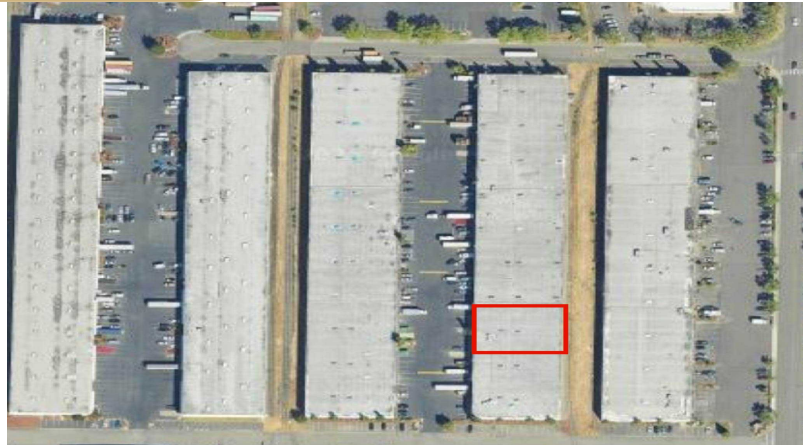


FOR LEASE

SOUTHCENTER WEST, BUILDING B

1171 Andover Park West, Tukwila, WA 98188

±12,774 SF



LEASING INFO
& CONTACT

Chris Spofford
David Cahill

(425) 890-6961 / chris.spofford@jll.com
(206) 930-5599 / david.cahill@jll.com

