

1411

FOURTH

SEATTLE, WASHINGTON

100K+ SF PREMIER MOVE-IN READY OFFICE SPACE



MOVE-IN AND MOVE-UP READY

100K+ SF AVAILABLE FOR LEASE

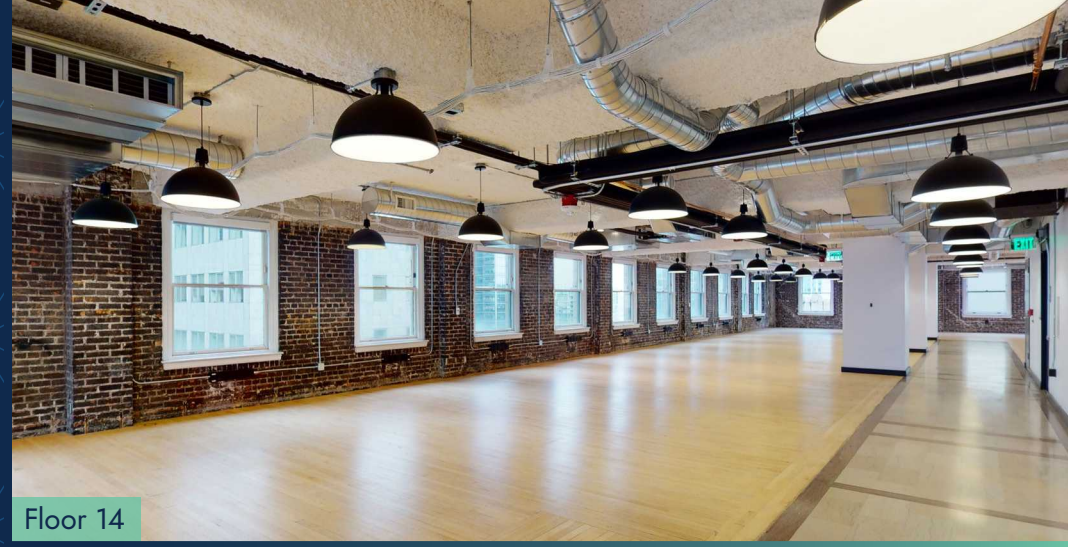
1411 Fourth is fully evolved to meet the demands of the booming tech era.

With renovated modern suites and efficient buildouts, these flexible spaces are designed for inspired work.

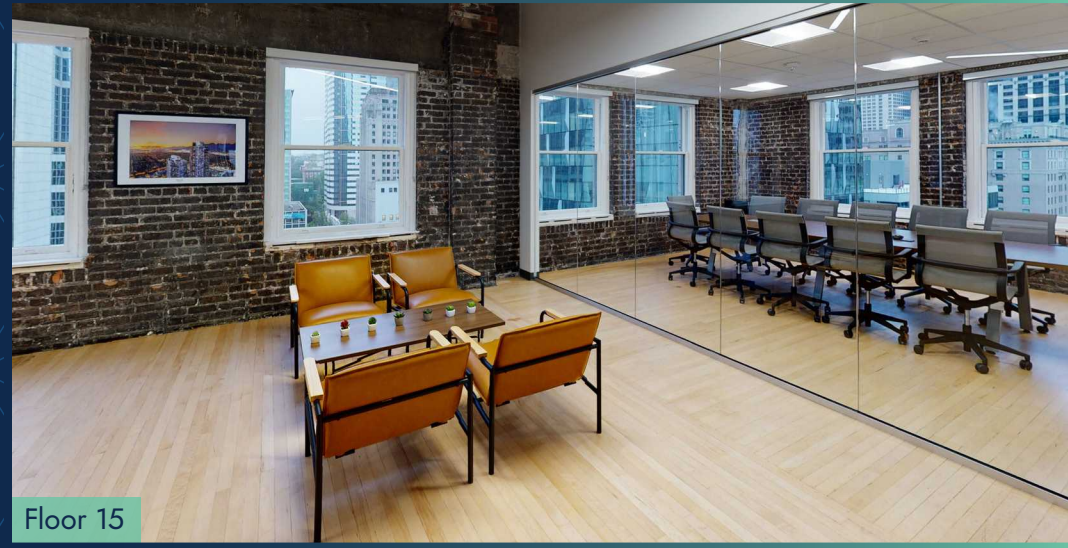
1929
year built

15
stories

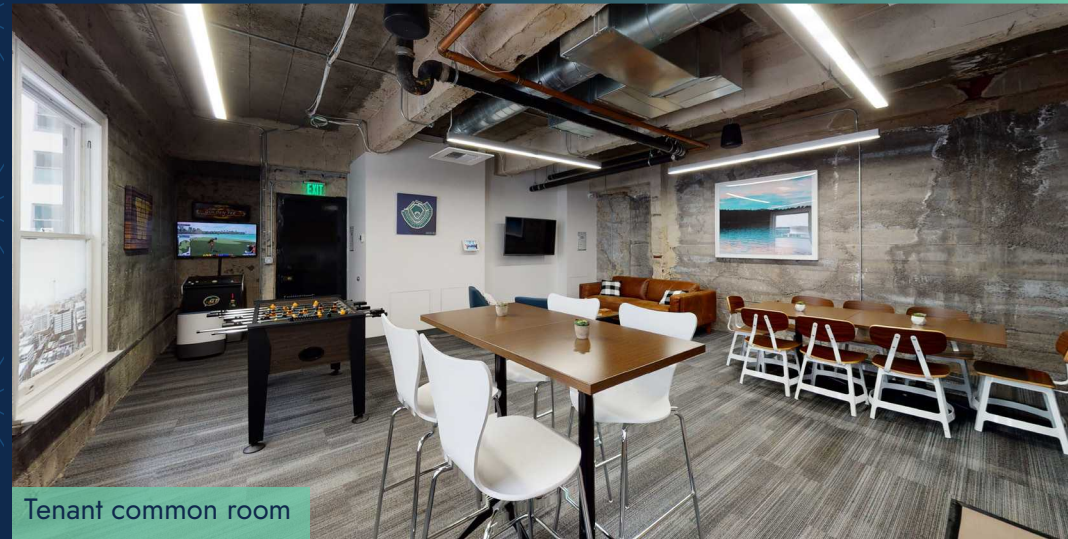
136,412
square feet



Floor 14



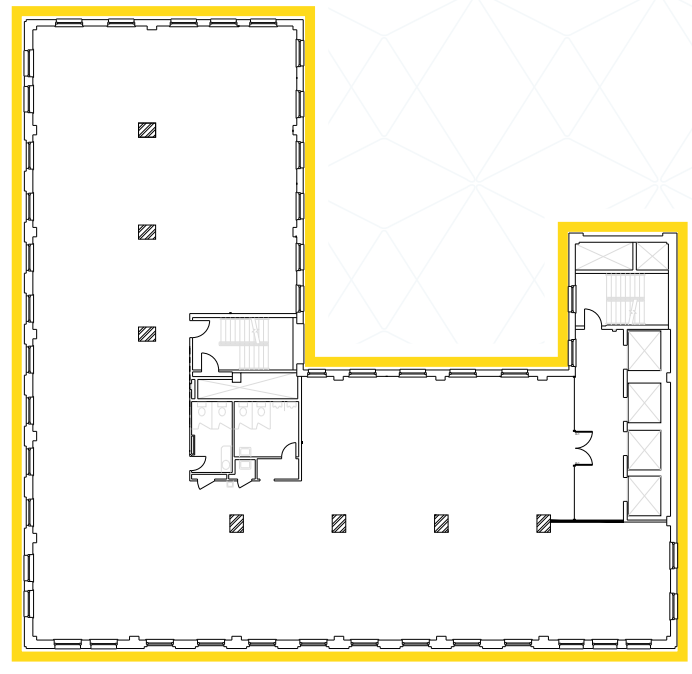
Floor 15



Tenant common room

ON THE CUTTING EDGE SINCE DEVELOPMENT

1411 Fourth's design prioritized natural light and fresh air from early conception. The building's functional floor plates and ceiling heights continue to stand out as optimal shells for the modern tenant.



REPRESENTATIVE PLAN ±8,743 RSF

BUILDING FEATURES



Large, operable
windows



New mechanical systems
& air conditioning



Common area/
game room



Conference
room



Bike storage, showers
and lockers



Central location —
Directly adjacent to newly
constructed Rainier Square



Harbor Café restaurant &
NEW Monorail Espresso
on-site



Pet-friendly



FIND YOUR SPACE

IN THE HEART OF THE CBD

Walking distance to numerous bus stops, light rail station, and the Seattle Monorail, the commute to and from the workplace couldn't be more convenient. Nearby attractions include Pike Place Market, the redeveloping waterfront, and Colman Ferry Terminal.

99
Walk Score 

100
Transit Score 

1411 Fourth Avenue · Seattle, Washington · 98101

FOR LEASING INFORMATION:

Joe Gowan
+1 206 607 1738
joe.gowan@jll.com

Lloyd Low
+1 206 607 1796
lloyd.low@jll.com



© 2023 Jones Lang LaSalle IP, Inc. All rights reserved. All information contained herein is from sources deemed reliable; however, no representation or warranty is made to the accuracy thereof. Jones Lang LaSalle Brokerage, Inc.