

2420
MEDICAL
OFFICE
BUILDING

Spec Suite Underway in the Allenmore Medical Corridor



PROPERTY
VIDEO



OWNED BY



HEALTHCARE
REALTY

LEASING BY



Kidder
Mathews

2420 MEDICAL OFFICE BUILDING



The 2420 MOB is a recently renovated medical office building in an unbeatable Tacoma location

2420 S Union Ave, Tacoma, WA

AVAILABILITIES

SUITE 120 SPEC SUITE 3,178 SF



2420
MEDICAL
OFFICE
BUILDING

Property Features



RECENT RENOVATIONS

The entire interior of the building has been remodeled, including lobby, ceiling, lighting and common area



UNBEATABLE LOCATION

Located in the Allenmore Medical Corridor & blocks from the Allenmore Hospital Campus



HIGH QUALITY OWNERSHIP

Healthcare Realty is the premier ownership group in the market



ACCESS

Immediate access to Highway 16 and I-5. Direct access to public transportation and eventually the new Light Rail expansion



PARKING

Abundant parking at 5.0/1,000 SF with easy access to and from the building, including structured parking



HEALTHCARE SYNERGY

Join the strongest medical corridor in the South Sound

2420 MEDICAL OFFICE BUILDING

Suite 120

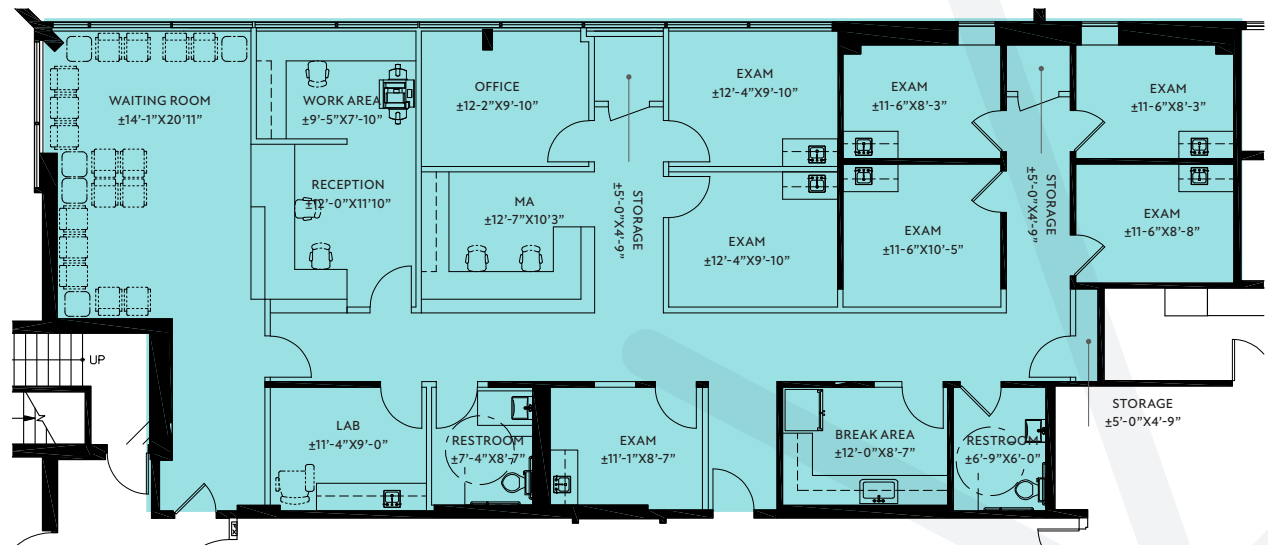
Spec Suite

SPACE PROGRAM

- 7 EXAM ROOMS
- 1 PRIVATE OFFICE
- LAB ROOM
- NURSE STATION
- IN-SUITE RESTROOM
- BREAK ROOM

±3,178

square feet available



2420
MEDICAL
OFFICE
BUILDING



Brand new interior
renovations



2420 MEDICAL OFFICE BUILDING



The connection
your employees
need and your
patients deserve.

7 min

drive to the Tacoma General Hospital /
Mary Bridge Medical Center

5 min

drive to the St. Joseph Medical Center

5 min

walk to Allenmore Hospital

2 min

drive to Highway 16 / Interstate 5

TACOMA LINK RAIL

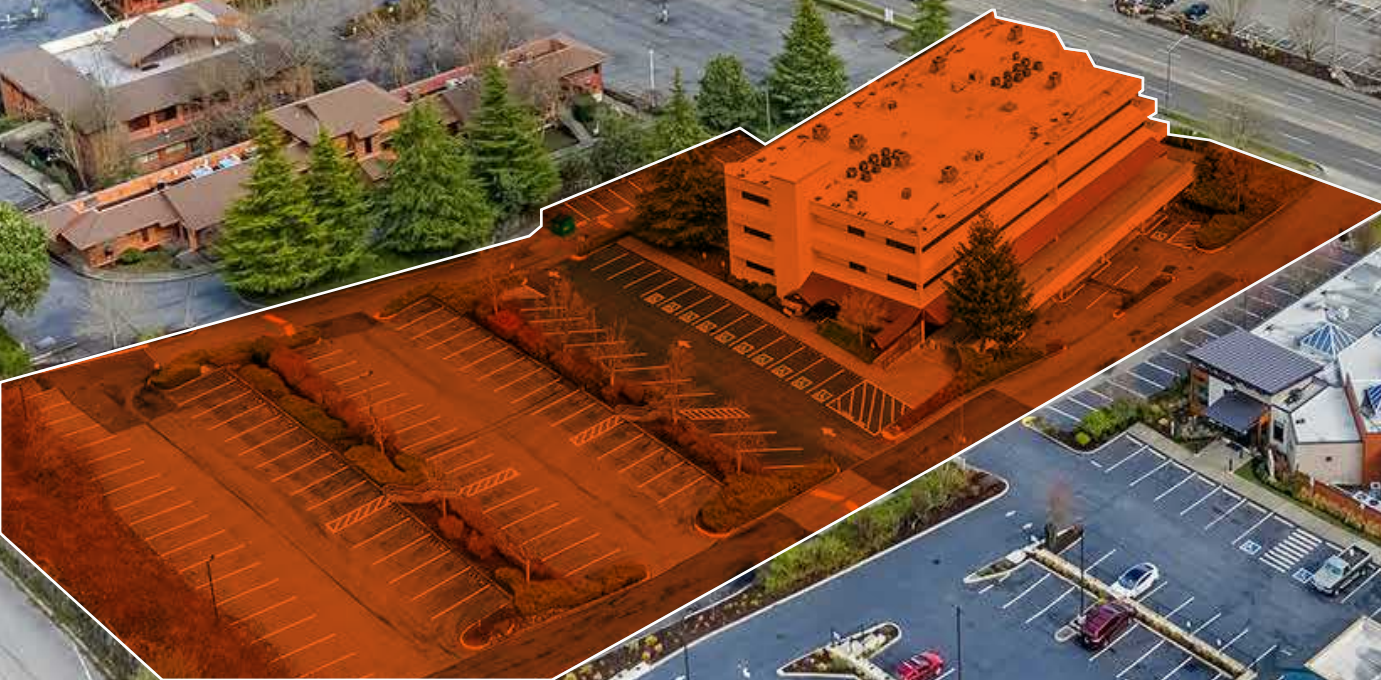
- - - Hilltop Tacoma Link Extension (2022)
- - - Tacoma Dome - Theater District (In-Service)
- - - St Joseph - TCC Planned Extension

2420
MEDICAL
OFFICE
BUILDING

OWNED BY
HEALTHCARE
REALTY

ALLENMORE
HOSPITAL

Unmatched access
for both employees
and patients



2420 MEDICAL OFFICE BUILDING

For additional leasing information, contact

DREW FRAME, SIOR

Senior Vice President
253.948.7032
drew.frame@kidder.com

WILL FRAME

Executive Vice President
253.948.6895
will.frame@kidder.com

1201 Pacific Avenue
Suite 1400
Tacoma, WA 98402



OWNED BY

**HEALTHCARE
REALTY**

LEASING BY

**km Kidder
Mathews**

This information supplied herein is from sources we deem reliable. It is provided without any representation, warranty, or guarantee, expressed or implied as to its accuracy. Prospective Buyer or Tenant should conduct an independent investigation and verification of all matters deemed to be material, including, but not limited to, statements of income and expenses. Consult your attorney, accountant, or other professional advisor.