

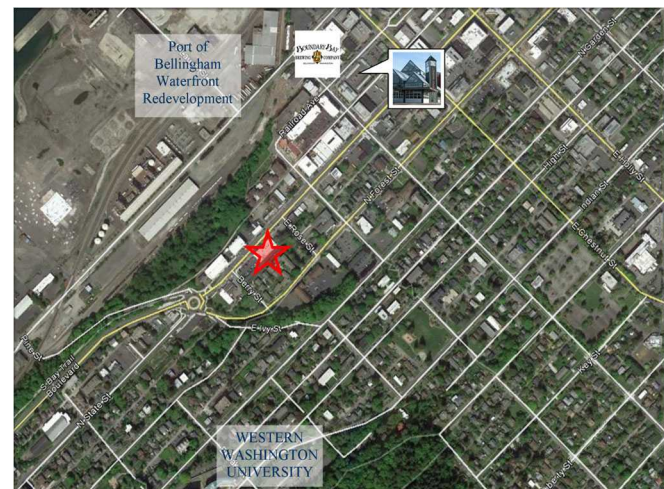


# FOR LEASE

## State Street Plaza

902 N. State St.  
Bellingham, WA 98225  
\$22.00 PSF, plus NNN

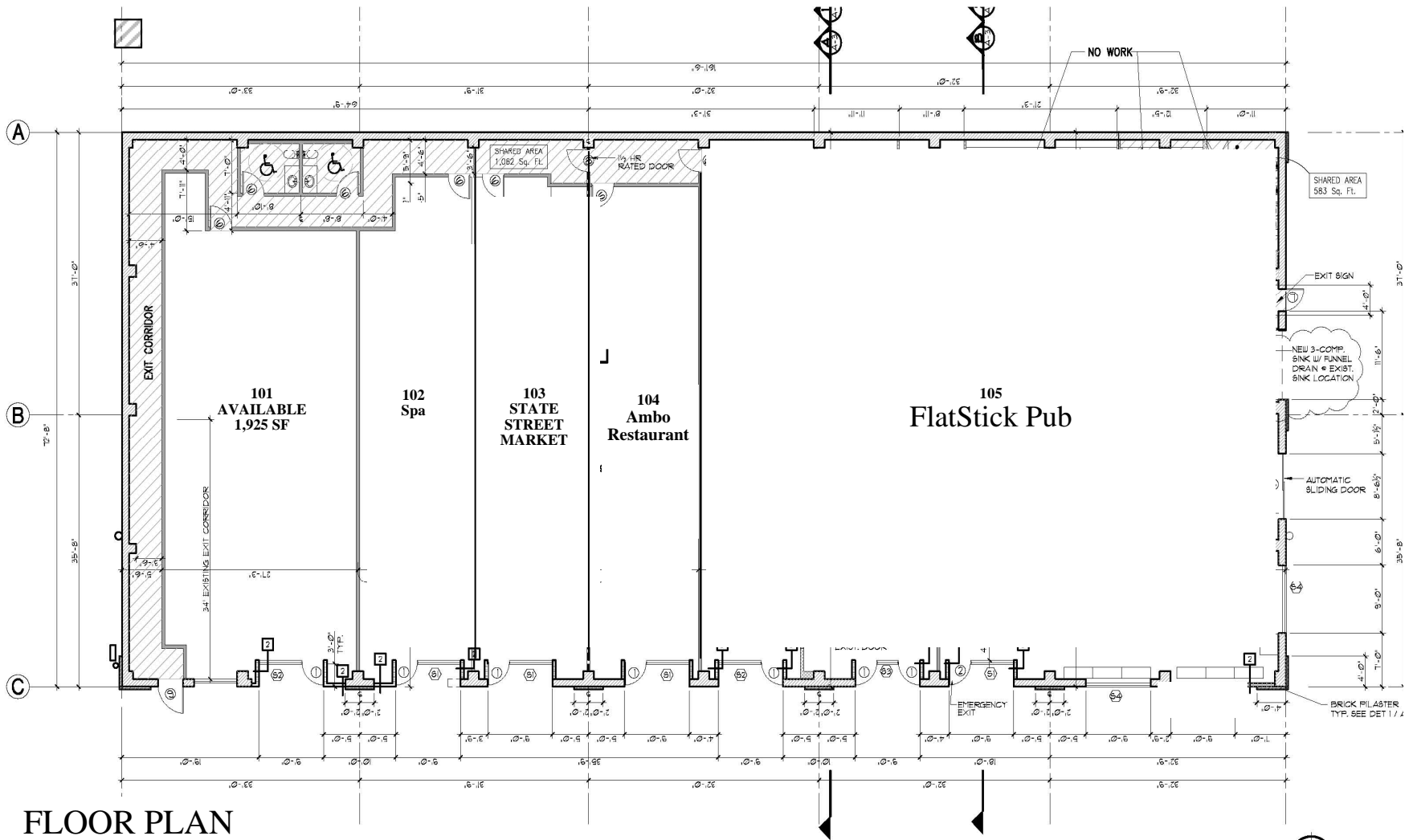
- Suite 101: 1,925 SF
- High traffic location near WWU and just blocks from the Depot Market Square
- Excellent signage available
- Parking lot, rare for downtown



**Brian Finnegan, CCIM**  
cell: 360.739.9300  
brian@westcomproperties.com  
www.westcomproperties.com

**WestCom**  
PROPERTIES, INC

**3111 Newmarket St., Ste. 108**  
**Bellingham, WA 98226**  
office: 360.647.2856  
fax: 360.647.7652



# FLOOR PLAN

SCALE : 1/8" = 1'-0"

TOTAL AREA : 11,593 S.F.

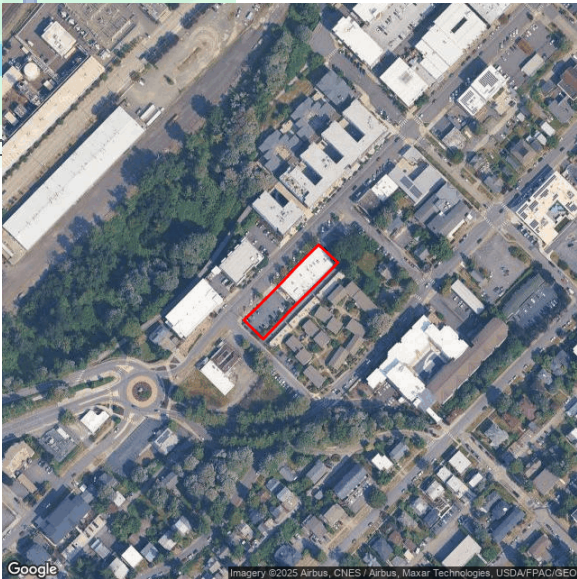
Demographic Report



902 North State Street

Population

| Distance | Male   | Female | Total  |
|----------|--------|--------|--------|
| 1- Mile  | 4,405  | 4,577  | 8,981  |
| 3- Mile  | 23,664 | 25,590 | 49,254 |
| 5- Mile  | 39,040 | 42,037 | 81,077 |



Brian Finnegan, CCIM  
brian@westcomproperties.com  
360-739-9300



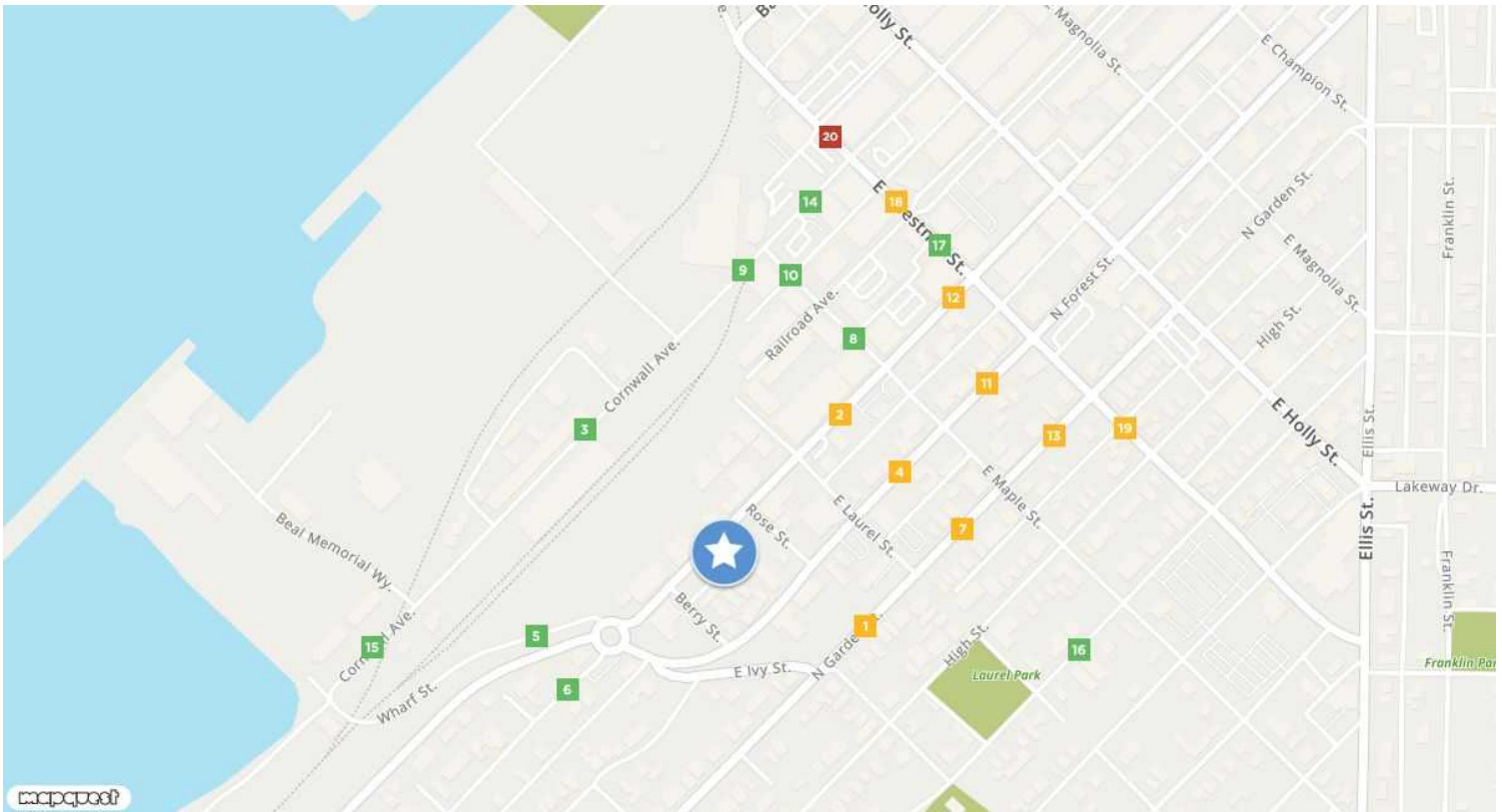
# 902 North State Street

# MOODY'S

Westcom Properties, Inc.

3111 New Market St. Bellingham, WA 98226 | 360-647-2856

## Traffic Counts



|  |   |  |   |  |
|--|---|--|---|--|
| <b>N Garden St</b> 1<br>E Myrtle St<br>Year: 2011 7,569<br>Year: 2009 7,500                    | <b>N State St</b> 2<br>E Laurel St<br>Year: 2014 6,400<br>Year: 2010 8,500<br>Year: 2008 8,400      | <b>Cornwall Ave</b> 3<br>W Laurel St<br>Year: 2014 2,200<br>Year: 2010 3,100<br>Year: 2008 1,500     | <b>N Forest St</b> 4<br>E Laurel St<br>Year: 2014 7,900<br>Year: 2010 7,100<br>Year: 2008 7,400 | <b>Wharf St</b> 5<br>Bike Path<br>Year: 2015 1,315<br>Year: 2010 2,600<br>Year: 2008 1,300       |
| <b>N State St</b> 6<br>E Oak St<br>Year: 2010 1,604<br>Year: 2007 1,300                        | <b>N Garden St</b> 7<br>E Maple St<br>Year: 2014 7,300<br>Year: 2011 7,411<br>Year: 2010 7,100      | <b>E Maple St</b> 8<br>Bike Path<br>Year: 2017 3,385<br>Year: 2010 2,200                             | <b>Cornwall Ave</b> 9<br>E Maple St<br>Year: 2017 3,340<br>Year: 2015 1,937                     | <b>E Maple St</b> 10<br>Cornwall Ave<br>Year: 2015 2,700<br>Year: 2014 2,700<br>Year: 2010 2,175 |
| <b>N Forest St</b> 11<br>E Maple St<br>Year: 2010 7,075<br>Year: 1999 9,700                    | <b>N State St</b> 12<br>E Chestnut St<br>Year: 2017 9,992   | <b>N Garden St</b> 13<br>E Chestnut St<br>Year: 2009 7,100<br>Year: 1999 10,000                      | <b>Cornwall Ave</b> 14<br>Chestnut St<br>Year: 2015 1,937                                       | <b>Cornwall Ave</b> 15<br>Pine St<br>Year: 2007 1,491  |
| <b>Indian St</b> 16<br>E Laurel St<br>Year: 2014 2,600<br>Year: 2010 2,500<br>Year: 2008 2,509 | <b>E Chestnut St</b> 17<br>Railroad Ave<br>Year: 2015 4,484<br>Year: 2010 9,200<br>Year: 2009 9,198 | <b>E Chestnut St</b> 18<br>Railroad Ave<br>Year: 2009 9,100<br>Year: 2008 9,100<br>Year: 1999 11,000 | <b>E Chestnut St</b> 19<br>High St<br>Year: 2007 9,100<br>Year: 1999 10,000                     | <b>Chestnut St</b> 20<br>Cornwall Ave<br>Year: 2014 10,400                                       |

**Brian Finnegan, CCIM**  
brian@westcomproperties.com  
360-739-9300

**MOODY'S**  
ANALYTICS

Catylst

This information supplied herein is from sources we deem reliable. It is provided without any representation, warranty or guarantee, expressed or implied as to its accuracy. Prospective Buyer or Tenant should conduct an independent investigation and verification of all matters deemed to be material, including, but not limited to, statements of income and expenses. Consult your attorney, accountant, or other prof. advisor.