

For Lease

Interurban Industrial

Suite 104, 105, 204 and 205

1,230 SF Office \$1.67 PSF/MO + \$0.46 PSF/MO NNN

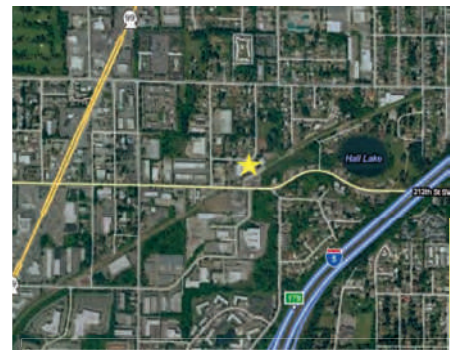
3,147 SF Warehouse \$1.50 PSF/MO + \$0.46 PSF/MO NNN



6116 211th St. SW, Lynnwood WA 98036

Property Assets

- ✓ Warehouse (3,147 SF) & Office (1,230 SF)
- ✓ 1 mile from I-5 and Hwy 99
- ✓ 15 miles North of Seattle
- ✓ Zoned Light Industrial
- ✓ 2 Grade Level OH Door
- ✓ Excellent Dry Storage
- ✓ Fully Fenced Yard
- ✓ Security Cameras on the Premise



Natalie Foskey, CPM, CCIM
Designated Broker

425-343-7176
Natalie@Key-CC.com
License Number 26699

Shivani Sterling
Sales & Leasing Broker

425-503-1678
Shivani@Key-CC.com
License Number 138760

FOR LEASE

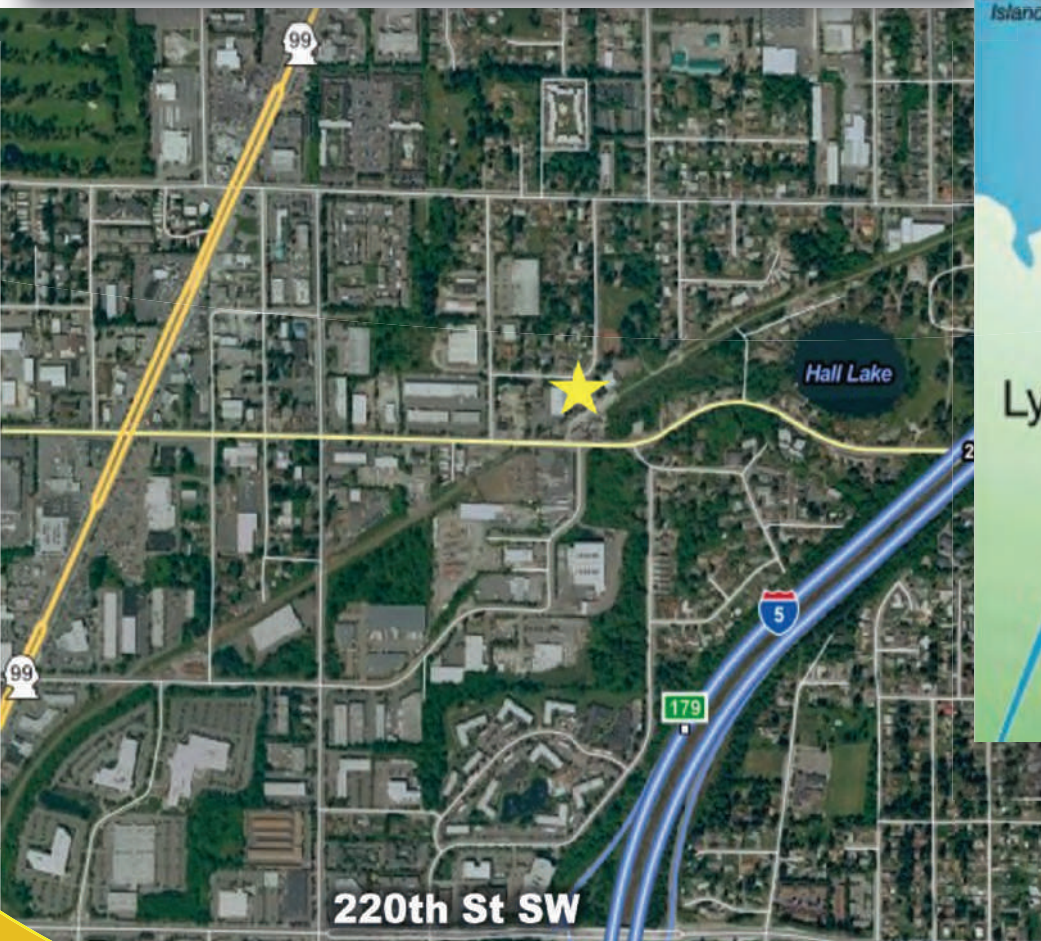
1,230 SF Office \$ 1.67 PSF/MO + \$0.46 PSF/MO NNN

3,147 SF Warehouse \$1.50 PSF/MO + \$0.46 PSF/MO NNN

Interurban Industrial

Suite 104, 105, 204 and 205

6116 211th St. SW, Lynnwood, WA 98036



Firm License #7894

Natalie Foskey, CPM, CCIM

Designated Broker

425-343-7176

Natalie@Key-CC.com

License Number 26699

Shivani Sterling

Sales & Leasing Broker

425-503-1678

Shivani@Key-CC.com

License Number 138760

6116 211th St. SW #203 | Lynnwood, WA 98036 | 425-658-3288 | KEYCHOICECOMMERCIAL.COM

FOR LEASE

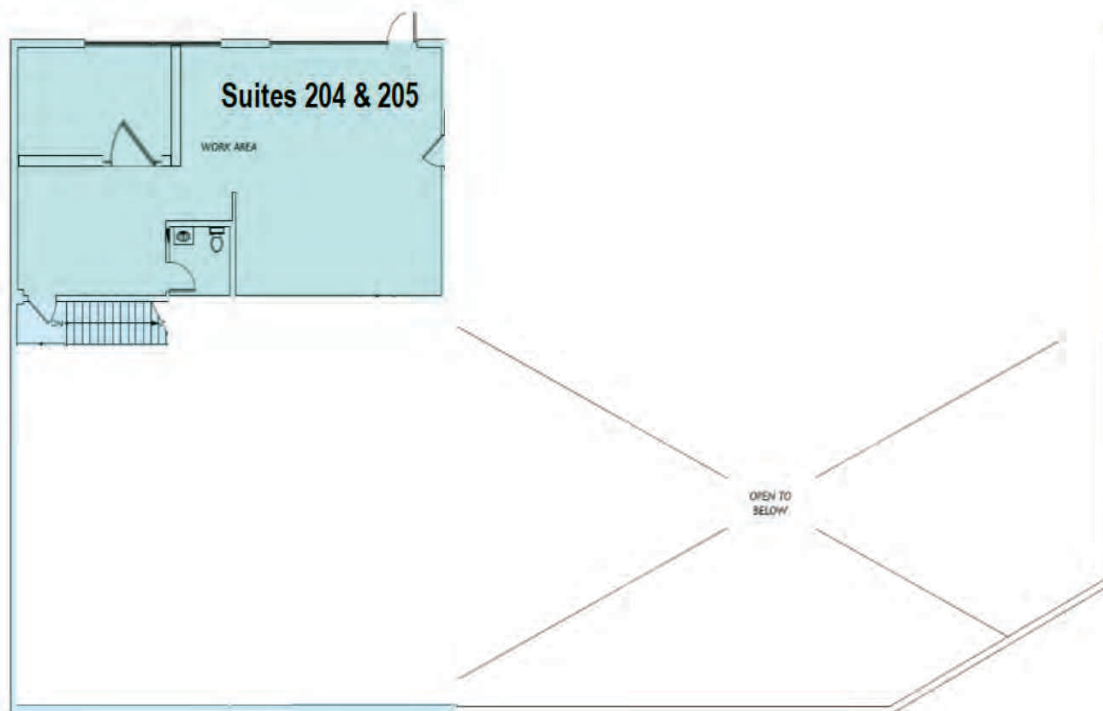
1,230 SF Office \$ 1.67 PSF/MO + \$0.46 PSF/MO NNN

3,147 SF Warehouse \$1.50 PSF/MO + \$0.46 PSF/MO NNN

Interurban Industrial

Suite 104, 105, 204 and 205

6116 211th St. SW, Lynnwood, WA 98036



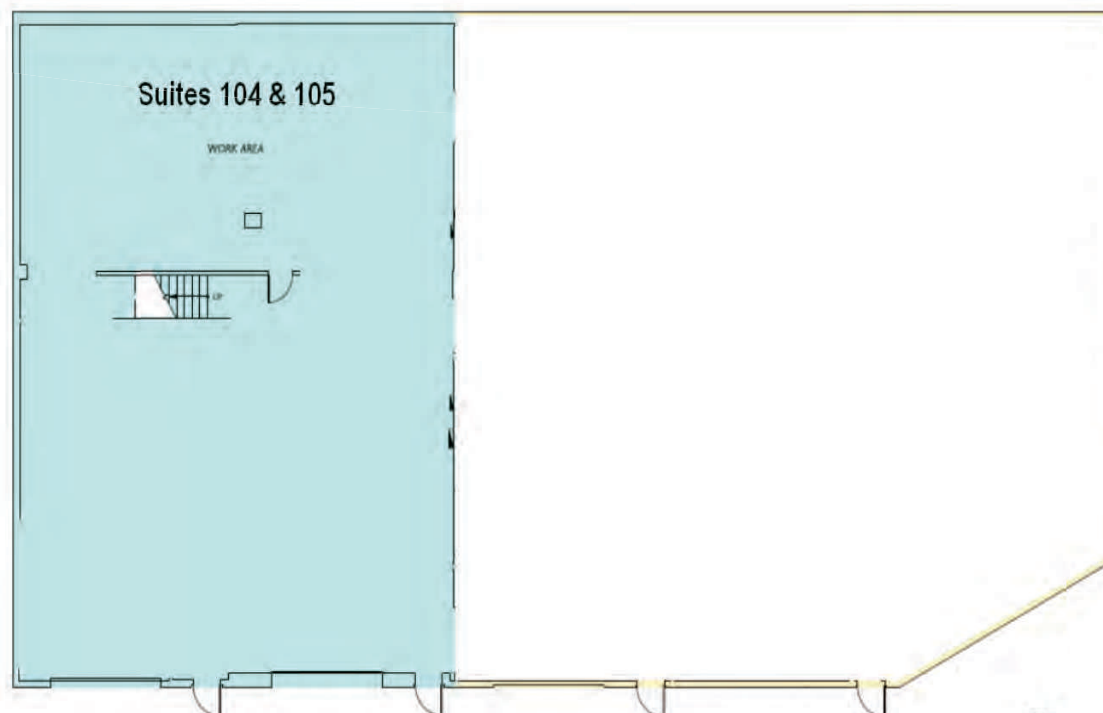
FIRST FLOOR:

Suite 204 & 205 **1,230 SF**

Work area, one office, & restroom,

With stairway to warehouse space.

Offices could easily be added to this space.



BASEMENT FLOOR:

Suites 104 & 105 **3,147 SF**

Up to 2 GL rolling doors &

Up to 2 man doors.

This area contains 480 volt power.



Firm License #7894

Natalie Foskey, CPM, CCIM

Designated Broker

425-343-7176

Natalie@Key-CC.com

License Number 26699

Shivani Sterling

Sales & Leasing Broker

425-503-1678

Shivani@Key-CC.com

License Number 138760

6116 211th St. SW #203 | Lynnwood, WA 98036 | 425-658-3288 | KEYCHOICECOMMERCIAL.COM

FOR LEASE

1,230 SF Office \$ 1.67 PSF/MO + \$0.46 PSF/MO NNN

3,147 SF Warehouse \$1.50 PSF/MO + \$0.46 PSF/MO NNN

Interurban Industrial

Suite 104, 105, 204 and 205

6116 211th St. SW, Lynnwood, WA 98036



Year Built	1988
County	Snohomish County
Parcel Number	0038020000050
Approximate NNN Rate	\$ 5.52 PSF / Month
Asset Class	Industrial



Firm License #7894

Natalie Foskey, CPM, CCIM

Designated Broker

425-343-7176

Natalie@Key-CC.com

License Number 26699

Shivani Sterling

Sales & Leasing Broker

425-503-1678

Shivani@Key-CC.com

License Number 138760

6116 211th St. SW #203 | Lynnwood, WA 98036 | 425-658-3288 | KEYCHOICECOMMERCIAL.COM