

FOR LEASE

# ODDFELLOWS BUILDING

911 E PINE ST  
SEATTLE, WA

KIDDER.COM

km Kidder  
Mathews



## ODDFELLOWS BUILDING

*Rare opportunity to lease character rich office space in the heart of Capitol Hill's Pike/Pine corridor.*



### BUILDING HIGHLIGHTS

Built in 1908 and renovated in 2008

Across from Cal Anderson Park

One block to Seattle Streetcar's First Hill Line and King County metro buses, four blocks to Link light rail's Capitol Hill Station

Neighboring retailers include Oddfellows Cafe + Bar, Molly Moon's ice cream, Le Labo, and Elliott Bay Book Company

Passenger elevator and shared restrooms

### ACCESSIBILITY

Easy access to I-5

5 min walk to Link Light Rail

1 block from Seattle Streetcar

Protected bike lane on Broadway

95

TRANSIT SCORE

100

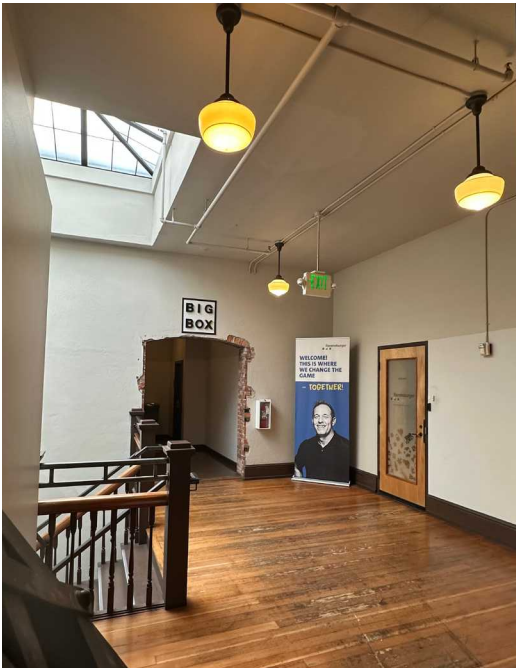
WALK SCORE

89

BIKE SCORE



ODDFELLOWS BUILDING



SUITES

Suite	SF	Floor Plan
SUITE 100 & 101	1,455 SF	<a href="#">View Floor Plan</a>
SUITE 102	1,030 SF	<a href="#">View Floor Plan</a>
SUITE 201/EAST HALL	2,642 SF	<a href="#">View Floor Plan</a>
SUITE 202/CENTURY BALLROOM	8,664 SF	<a href="#">View Floor Plan</a>
SUITE 203/TIN TABLE	2,567 SF	<a href="#">View Floor Plan</a>
SUITE 204/WEST HALL	4,174 SF	<a href="#">View Floor Plan</a>
SUITE 400	6,227 SF	<a href="#">View Floor Plan</a>



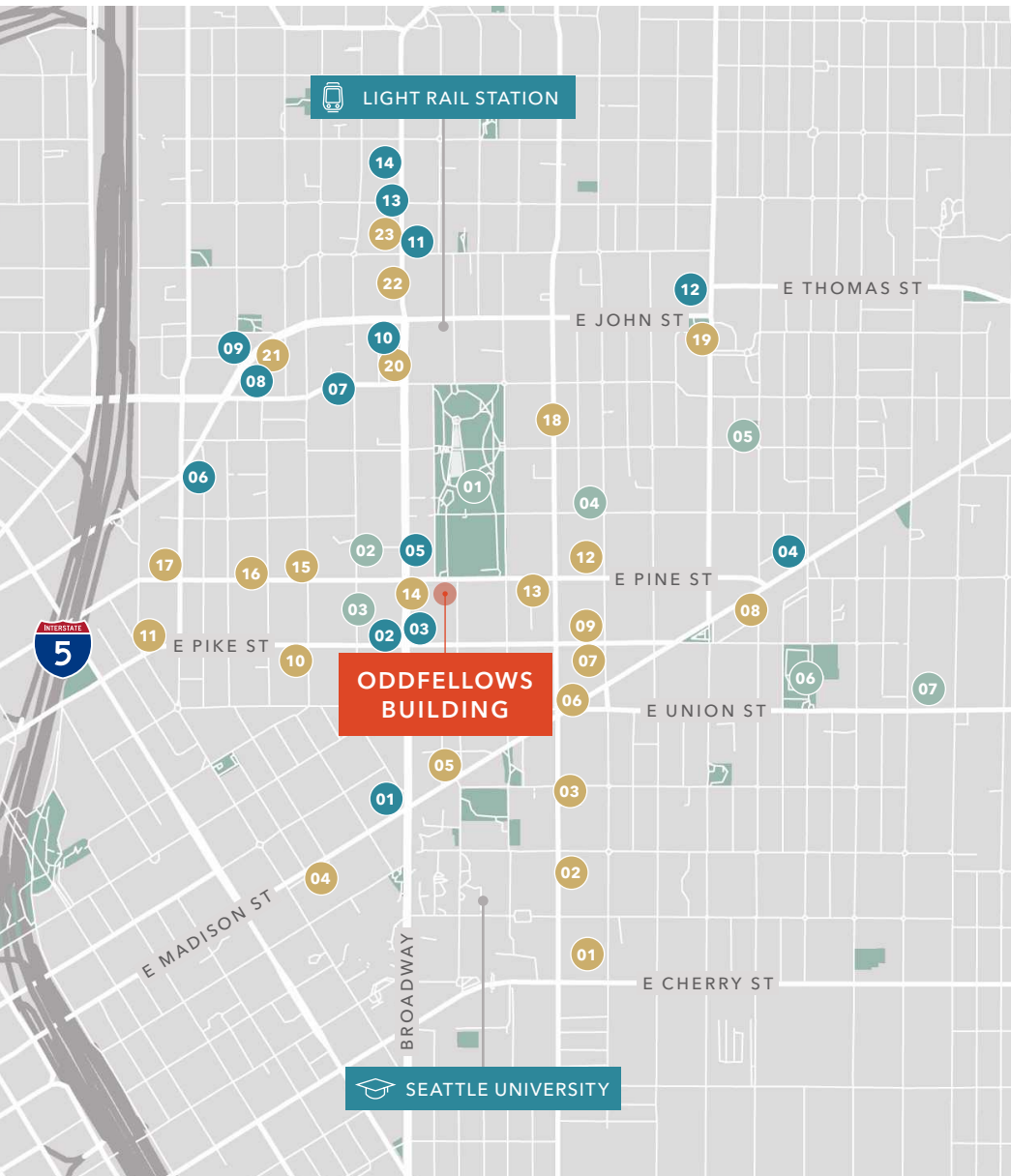
# LOCATED IN *VIBRANT* *CAPITOL HILL* NEIGHBORHOOD

*Capitol Hill in Seattle thrives as a cultural hub, offering diverse dining, entertainment, and community events. Its central location provides easy access to downtown amenities while maintaining a distinct neighborhood charm.*



ODDFELLOWS BUILDING





## NEARBY AMENITIES

### RESTAURANTS & BARS

- 01 Seoul Bowl & Bar
- 02 Batch Baking Company
- 03 Rhein Haus Seattle
- 04 Gyro Saj
- 05 Garage Billiards & Bowl
- 06 Mighty-O Donuts
- 07 Elysian Capitol Hill Brewery
- 08 Ox Burger
- 09 Dave's Hot Chicken
- 10 Biang Biang Noodles
- 11 Noren
- 12 Manao Thai Street Eats
- 13 Mt.Joy
- 14 Molly Moon's Ice Cream
- 15 Fogon Cocina Mexicana
- 16 Baiten
- 17 Kizuki Ramen & Izakaya
- 18 Outer Planet Craft Brewing
- 19 Bakery Nouveau
- 20 Dick's Drive-In
- 21 Captain Blacks
- 22 Galbi Burger Broadway
- 23 Basecamp Cafe and Bar

### SHOPPING & GROCERY

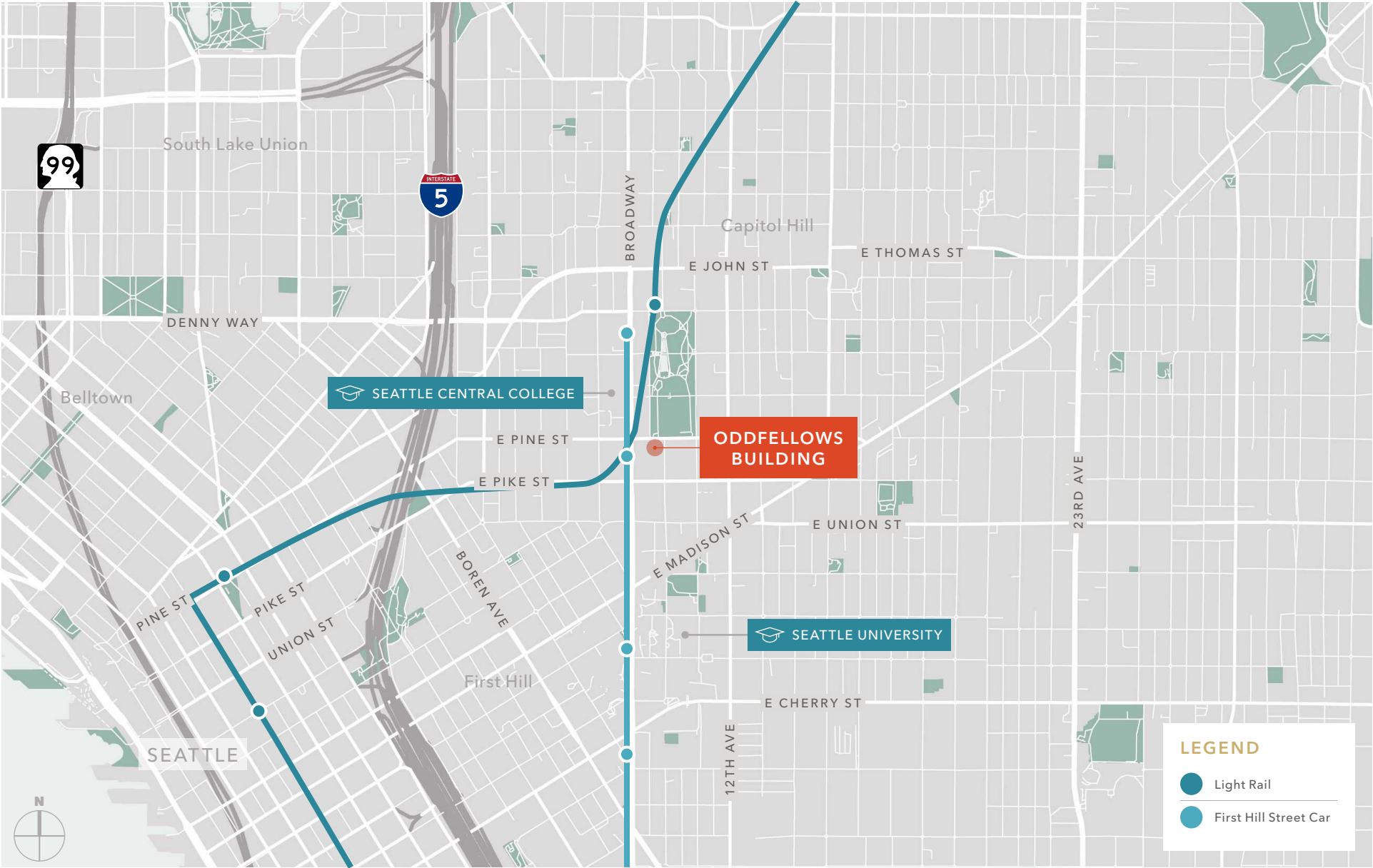
- 01 Whole Foods Market
- 02 QFC
- 03 Elliott Bay Book Company
- 04 Trader Joe's
- 05 Blick Art Materials
- 06 City Market
- 07 Twice Sole Tales
- 08 Capitol Hill Goodwill
- 09 Pretty Parlor
- 10 Phoenix Comics & Games
- 11 Lifelong Thrift Store
- 12 Safeway
- 13 Crossroads Trading
- 14 Broadway Market

### RECREATION & PARKS

- 01 Cal Anderson Park
- 02 Broadway Performance Hall
- 03 Erickson Theater
- 04 New City Theater
- 05 Seven Hills Park
- 06 TT Minor Park
- 07 Central Cinema



ODDFELLOWS BUILDING





# ODDFELLOWS BUILDING

*Exclusively leased by*

**TODD BATTISON**  
206.296.9621  
todd.battison@kidder.com

**DAVID GURRY**  
206.931.6474  
david.gurry@kidder.com

**KIDDER.COM**

This information supplied herein is from sources we deem reliable. It is provided without any representation, warranty, or guarantee, expressed or implied as to its accuracy. Prospective Buyer or Tenant should conduct an independent investigation and verification of all matters deemed to be material, including, but not limited to, statements of income and expenses. Consult your attorney, accountant, or other professional advisor. All Kidder Mathews designs are the sole property of Kidder Mathews. Branded materials and layouts are not authorized for use by any other firm or person.

**km Kidder  
Mathews**