

# 645+435 ELLIOTT

Stunning views of Elliott Bay with  
the flexibility to create a workplace  
that's **perfect for you.**

**South Building**  
635 Elliott Ave W

**North Building**  
645 Elliott Ave W



**Colliers Seattle**  
601 Union Street, Suite 5300  
Seattle, WA 98101  
[colliers.com](http://colliers.com)

**Geoff Pendergast**  
Senior Vice President  
+1 425 453 4544  
[geoff.pendergast@colliers.com](mailto:geoff.pendergast@colliers.com)

**Rick Hart**  
Senior Vice President  
+1 425 453 4543  
[rick.hart@colliers.com](mailto:rick.hart@colliers.com)

**Joe Conner**  
Associate Vice President  
+1 206 223 1423  
[joe.conner@colliers.com](mailto:joe.conner@colliers.com)



# 645+435 ELLIOTT

Take in the majestic views of Elliott Bay while creating a personalized space that reflects your company's vision.

**North Building**  
645 Elliott Ave W

**South Building**  
635 Elliott Ave W

## PROPERTY HIGHLIGHTS

- Tailored build-to-suit configurations available
- Secured 1.64/1,000 subterranean parking garage and bike storage
- Efficiently planned floorplates
- Large windows for maximum daylight
- Panoramic views of Elliott Bay
- On-site showers and lockers (645 Elliott)
- Pet friendly
- New LEED Gold construction
- Large 90-person conference center



# 645+635 ELLIOTT

## Current Availabilities

### North Building: 645 Elliott Ave W

1st Floor	Suite 1000 *	±19,127 RSF
	Suite 1010 *	±9,163 RSF
	Suite 1020	±2,505 RSF

3rd Floor	Suite 3005	±10,348 RSF
-----------	------------	-------------

[Virtual Tour](#)

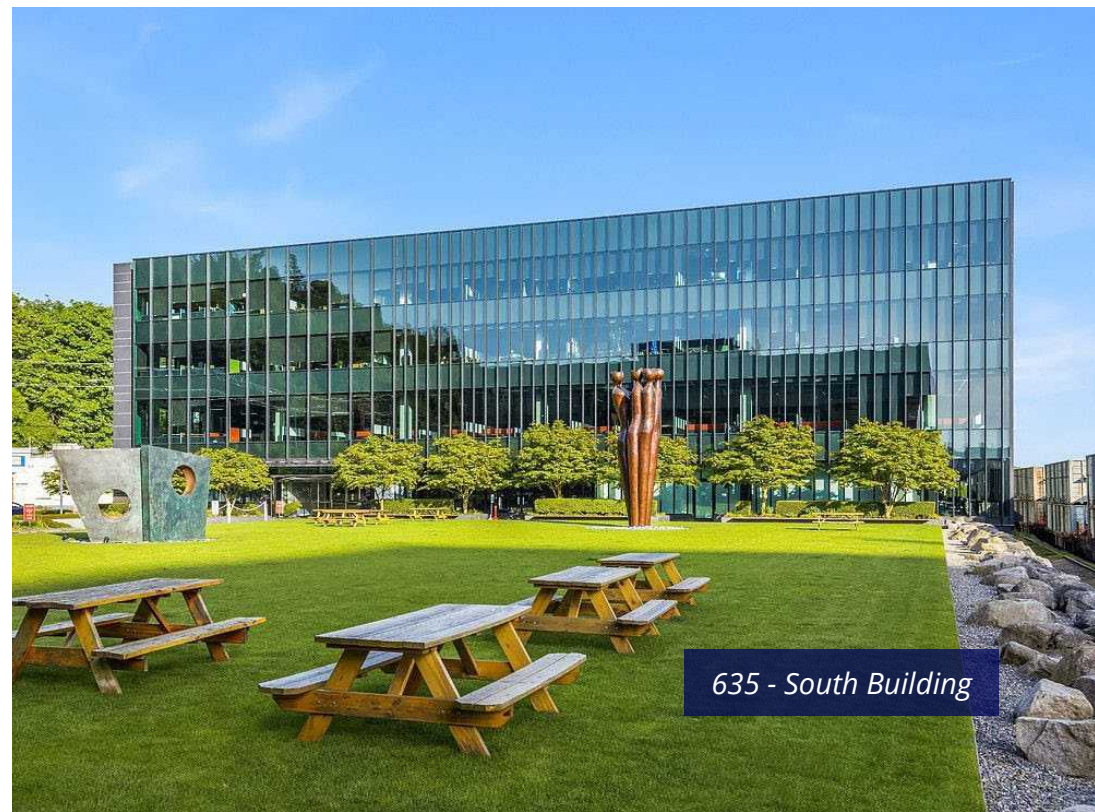
4th Floor	Suite 4005	±7,637 RSF
-----------	------------	------------

\* available 12/1/2025

### South Building: 635 Elliott Ave W

3rd Floor	Full Floor	±47,965 RSF
-----------	------------	-------------

4th Floor	Full Floor	±47,965 RSF
-----------	------------	-------------

[Virtual Tour](#)[View Floorplans](#)



# 645+435 ELLIOTT



**South Lake Union**  
1.5 miles

**Seattle CBD**  
2.2 miles

**Seattle Center**  
1 mile

**Olympic Sculpture Park**  
1 mile

**Queen Anne**  
1.2 miles

To I-5 via Mercer St

**Kinnear Park**  
0.9 mile

**645+435  
ELLIOTT**

**Elliott Bay Trail**

Elliott Bay

Stay connected to all the action  
while enjoying the freedom from  
downtown congestion.



# 645+425 CELLIOTT



**Colliers Seattle**

601 Union Street, Suite 5300  
Seattle, WA 98101  
[colliers.com](http://colliers.com)

**Geoff Pendergast**

Senior Vice President  
+1 425 453 4544  
[geoff.pendergast@colliers.com](mailto:geoff.pendergast@colliers.com)

**Rick Hart**

Senior Vice President  
+1 425 453 4543  
[rick.hart@colliers.com](mailto:rick.hart@colliers.com)

**Joe Conner**

Associate Vice President  
+1 206 223 1423  
[joe.conner@colliers.com](mailto:joe.conner@colliers.com)