




Available for Sublease Office Space

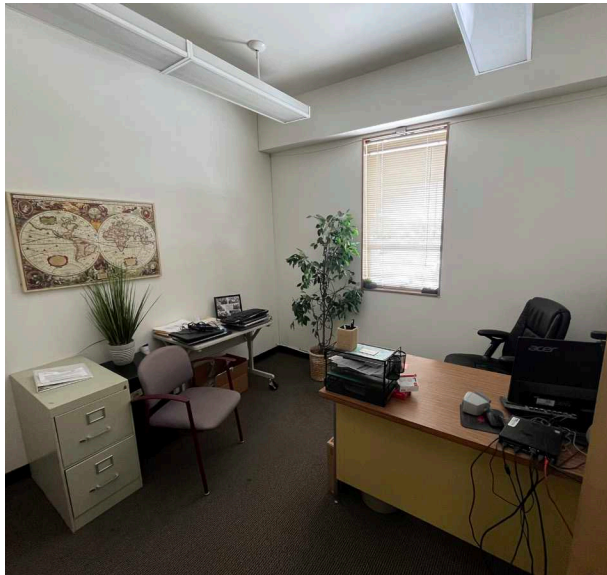
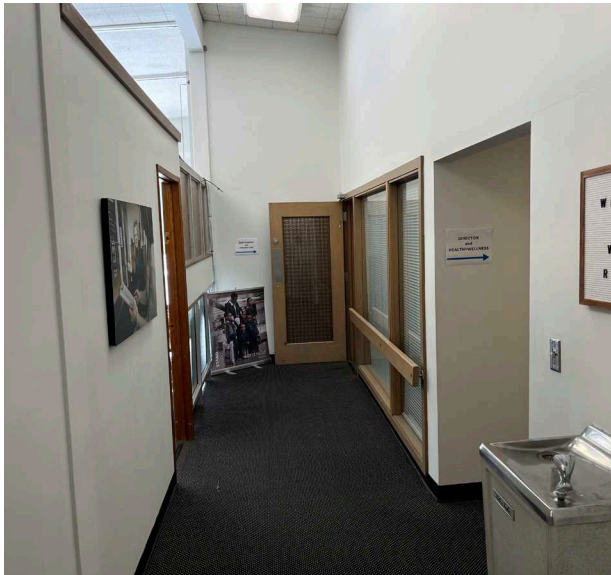
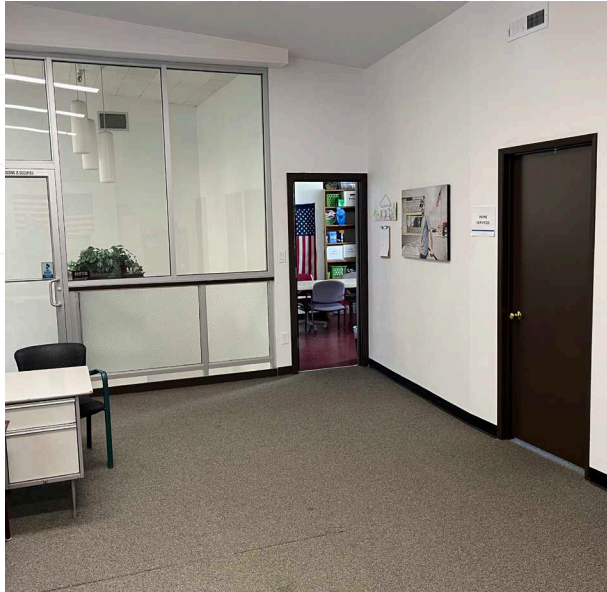
±5,953 SF

2600 N Columbia Center Blvd, Richland, WA

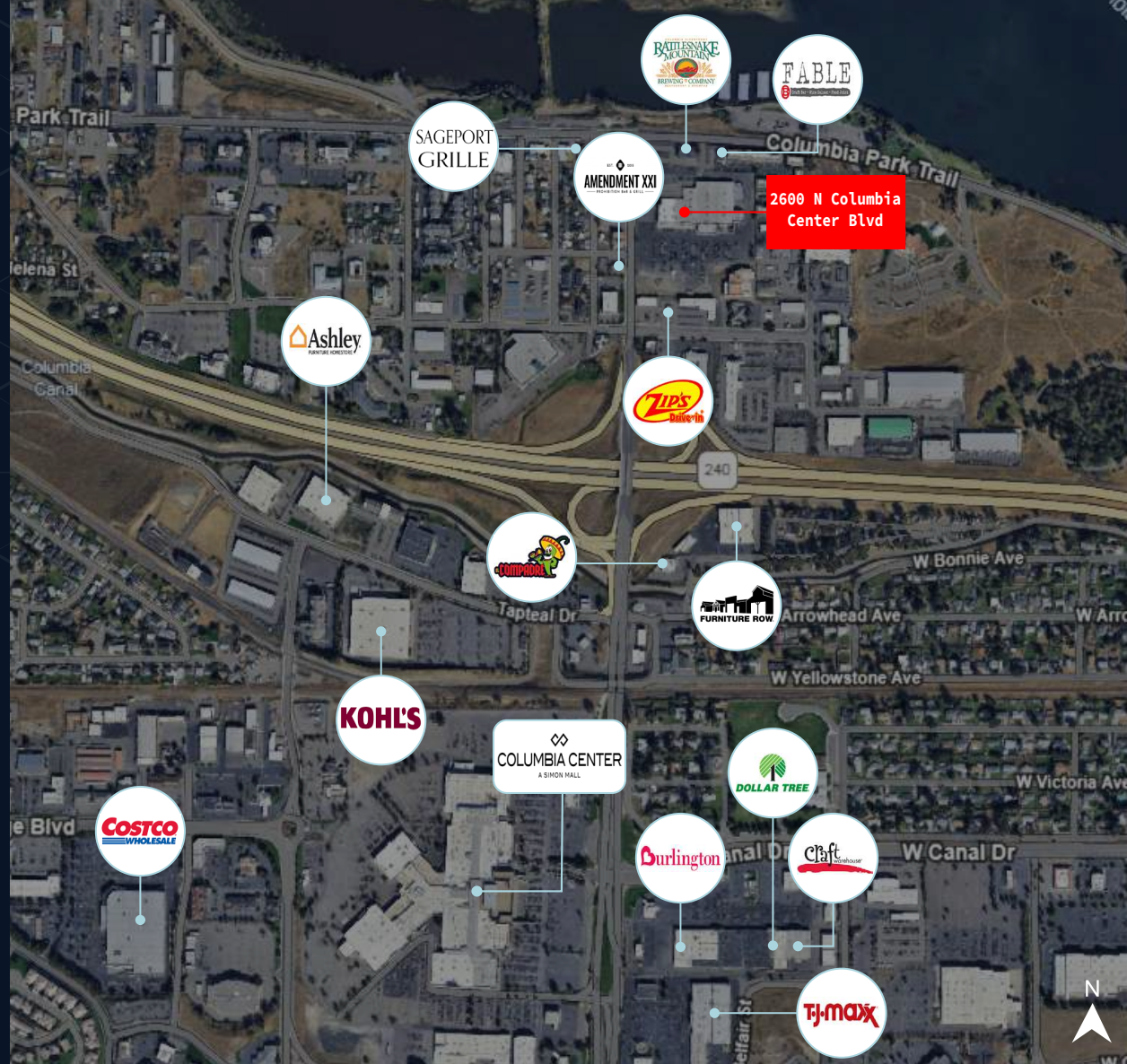
 **JLL** SEE A BRIGHTER WAY

Jones Lang LaSalle Brokerage Inc., Real Estate License #: 01856260

- Office size: $\pm 5,953$ SF
- LED: April 30th, 2028
- Rate: Call listing broker
- ± 8 Private offices & cubicles
- Conference room
- Located at River Edge Plaza
- High-traffic area
- Ample parking



Collection street	Cross street	Traffic volume
Columbia Center Blvd	Geneva St S	5,444
Columbia Center Blvd	Fowler St N	12,013
N Columbia Center Blvd	N Columbia Center Blvd NW	6,300
N Columbia Center Blvd	N Columbia Center Blvd N	9,613
N Columbia Center Blvd	State Hwy 240 S	23,366
State Rte 240	Columbia Center Blvd W	47,168



Robert Christiansen
Vice President
+1 (509) 200-4774
Robert.Christiansen@jll.com
WA RE License #24028647

Although information has been obtained from sources deemed reliable, JLL does not make any guarantees, warranties or representations, express or implied, as to the completeness or accuracy as to the information contained herein. Any projections, opinions, assumptions or estimates used are for example only. There may be differences between projected and actual results, and those differences may be material. JLL does not accept any liability for any loss or damage suffered by any party resulting from reliance on this information. If the recipient of this information has signed a confidentiality agreement with JLL regarding this matter, this information is subject to the terms of that agreement. ©2025 Jones Lang LaSalle Brokerage, Inc. All rights reserved.