

FOR LEASE

# CAPRICE PROFESSIONAL PLAZA

5620 112TH ST E, PUYALLUP, WA

Ample parking 4/1,000

Suite 125 (ground floor) : 5,500 SF

Great visibility, ideal location with good signage and convenient ingress/egress

Tenant mix includes professional office and medical

Nice welcoming reception & waiting area, 16 private offices, break area, conference room, large bull pen, two restrooms, two entrances, furniture is included

Lease rate \$18.00 - \$20.00 PSF + NNN (\$8.90)

Nice finishes throughout the building

JOEL SHABEL

253.722.1406 | joel.shabel@kidder.com

KIDDER.COM

This information supplied herein is from sources we deem reliable. It is provided without any representation, warranty, or guarantee, expressed or implied as to its accuracy. Prospective Buyer or Tenant should conduct an independent investigation and verification of all matters deemed to be material, including, but not limited to, statements of income and expenses. Consult your attorney, accountant, or other professional advisor.





# *HIGHLY- ACCESSIBLE LOCATION*

Easy access to I-5 and SR-512

Adjacent to many amenities

Easy for visitors to locate

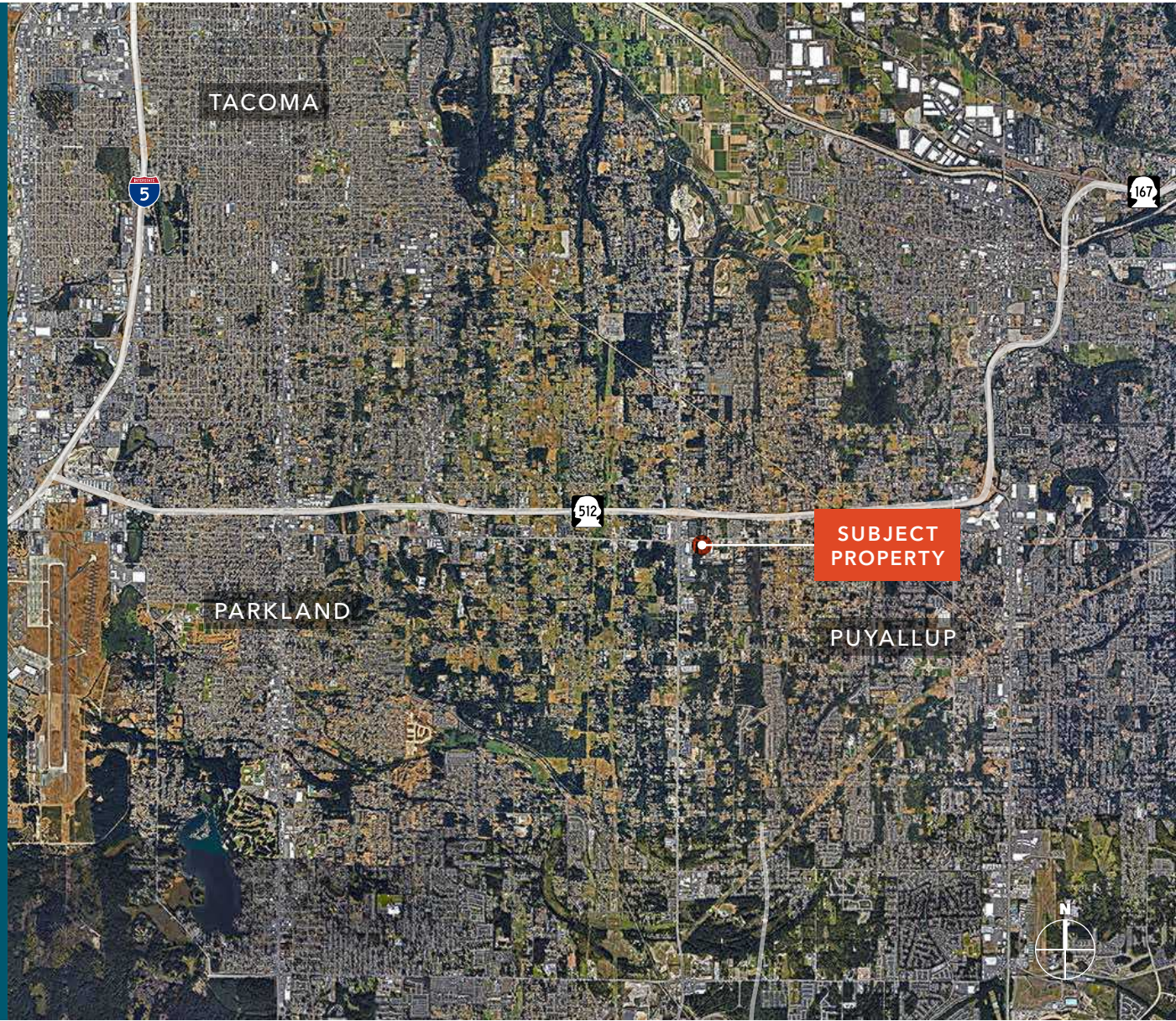
Bus stop out front

*3 MIN*

SR-512

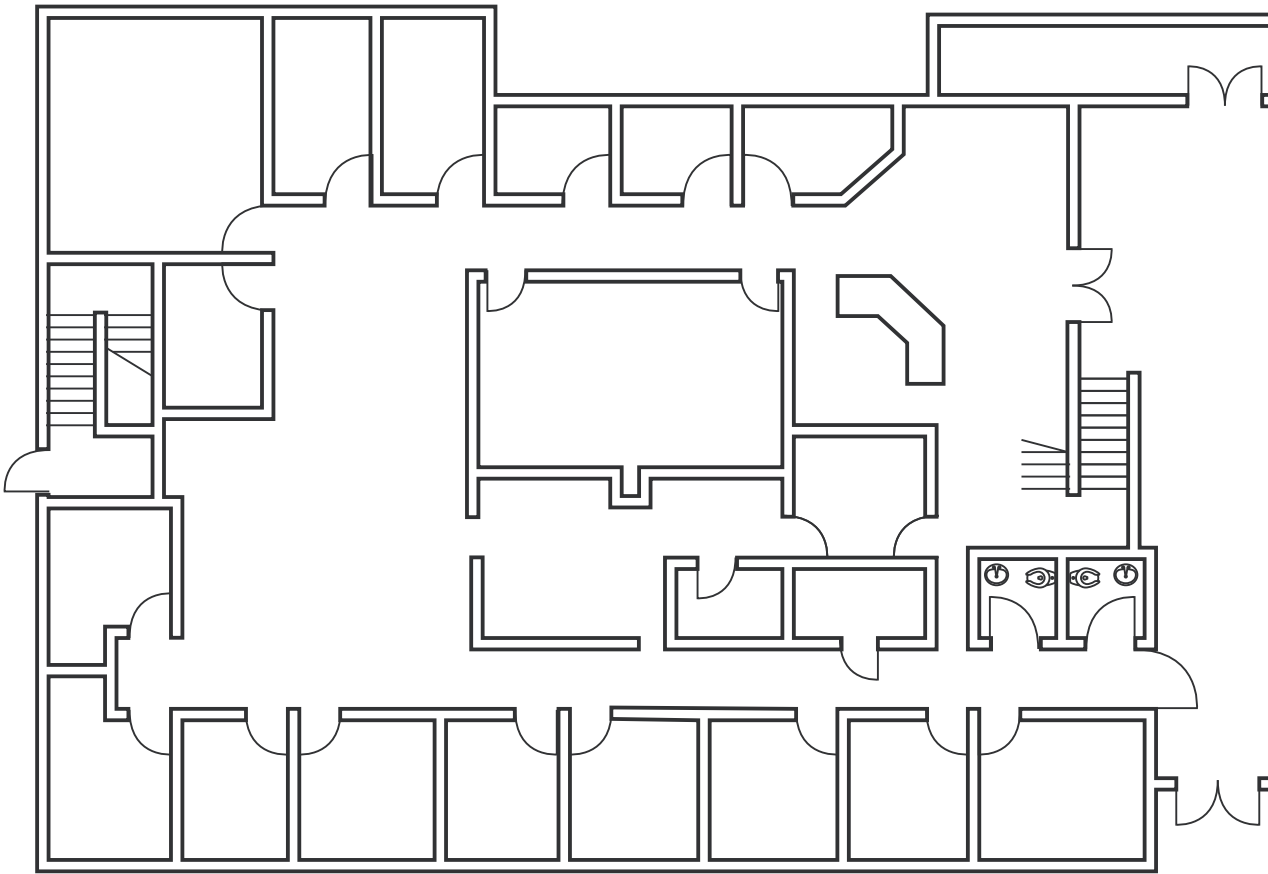
*10 MIN*

I-5





SUITE 125



*±5,500*

AVAILABLE SF

*\$18.00 - \$20.00*

LEASE RATE

*\$8.90*

NNN

5620 112TH ST E

## BUILDING PHOTOS



±5,500

AVAILABLE SF

\$18.00 - \$20.00

LEASE RATE

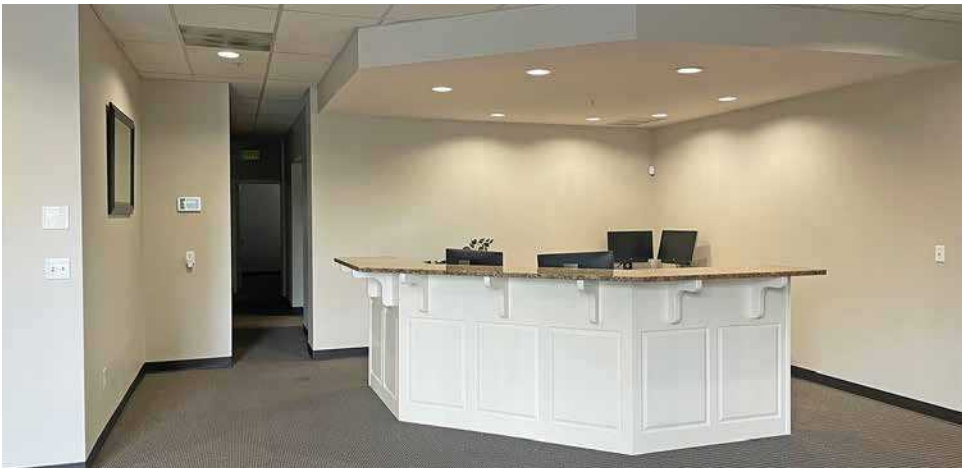
\$8.90

NNN

AVAILABLE FOR LEASE

KIDDER MATHEWS

## BUILDING PHOTOS



*±5,500*

AVAILABLE SF

*\$18.00 - \$20.00*

LEASE RATE

*\$8.90*

NNN