

THE BRADO BUILDING *FOR SUBLEASE*

6915 S 196TH ST | KENT, WA 98032



20,041 SF Industrial Building For Sublease

20,041 SF total shell

1,951 SF total office

1,766 SF total mezzanine

13 grade-level doors

20' clear height

Lease expires October 31, 2028

Available with 30 days' notice

Call brokers for more information

MIKE NEWTON

Executive Vice President
206.248.7311
mike.newton@kidder.com

KRAIG HEETER, SIOR

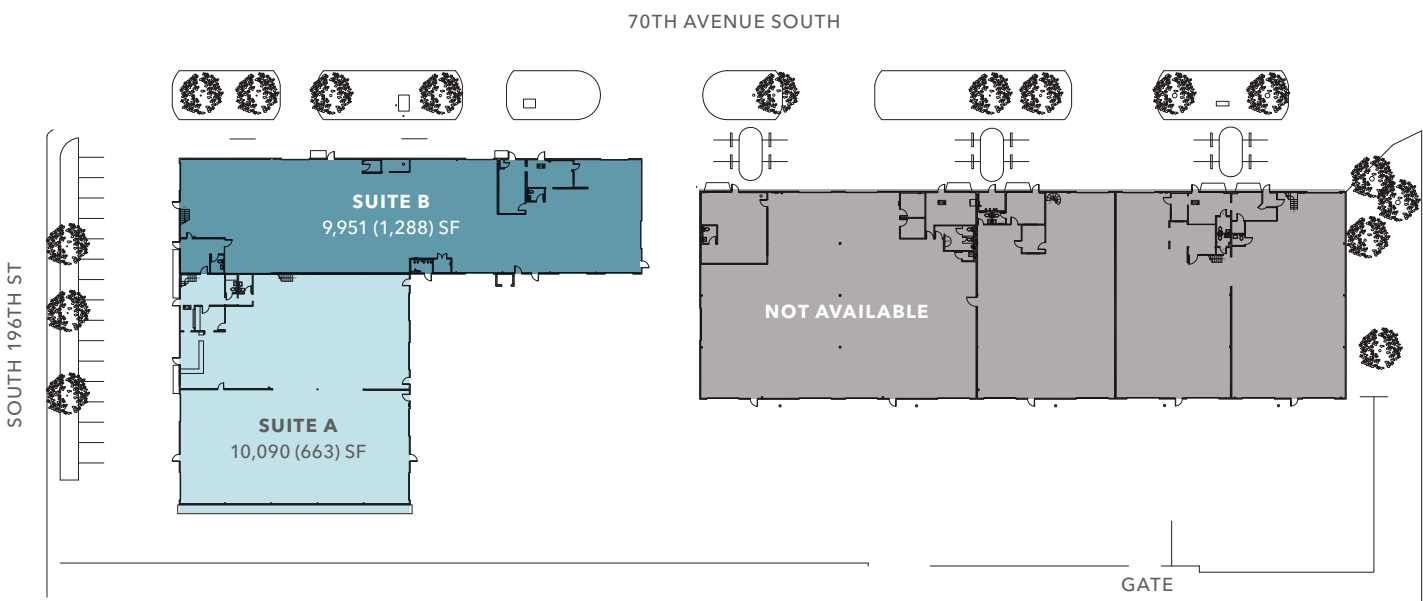
Executive Vice President
206.248.7313
kraig.heeter@kidder.com

KIDDER.COM

This information supplied herein is from sources we deem reliable. It is provided without any representation, warranty, or guarantee, expressed or implied as to its accuracy. Prospective Buyer or Tenant should conduct an independent investigation and verification of all matters deemed to be material, including, but not limited to, statements of income and expenses. Consult your attorney, accountant, or other professional advisor.

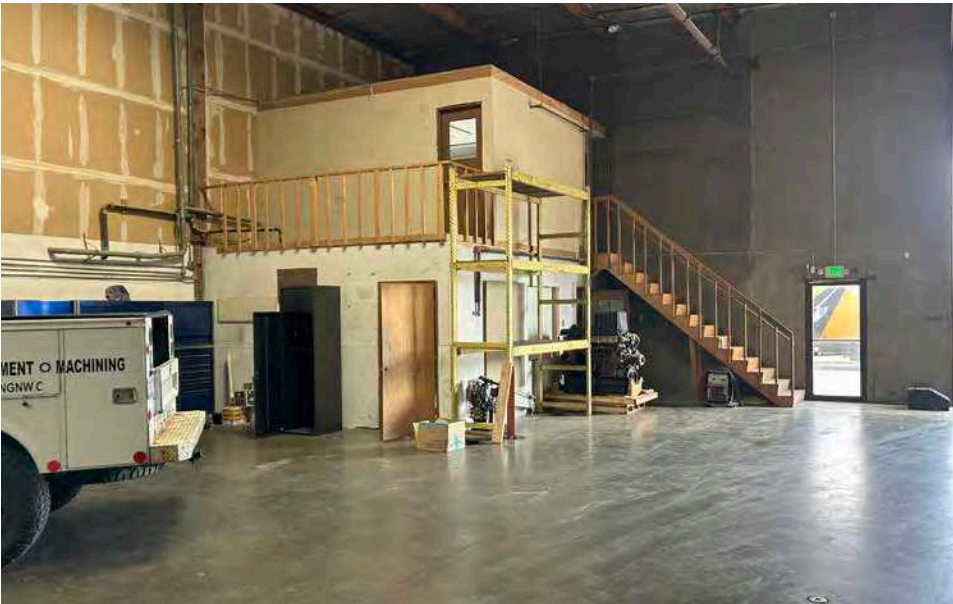


SITE PLAN



SUITE AVAILABILITY

Suite #	Shell SF	Office SF	Mezzanine SF	GL Doors	Date Available
SUITE A	10,090 SF	663 SF	687 SF	6	30 days' notice
SUITE B	9,951 SF	1,288 SF	1,079 SF	7	30 days' notice
SUITES A & B	20,041 SF	1,951 SF	1,766 SF	13	30 days' notice

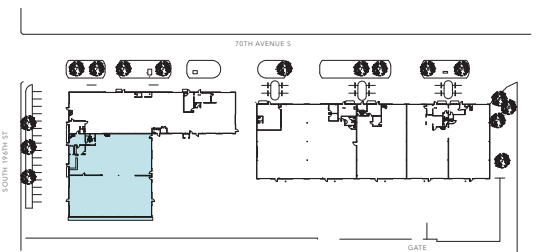
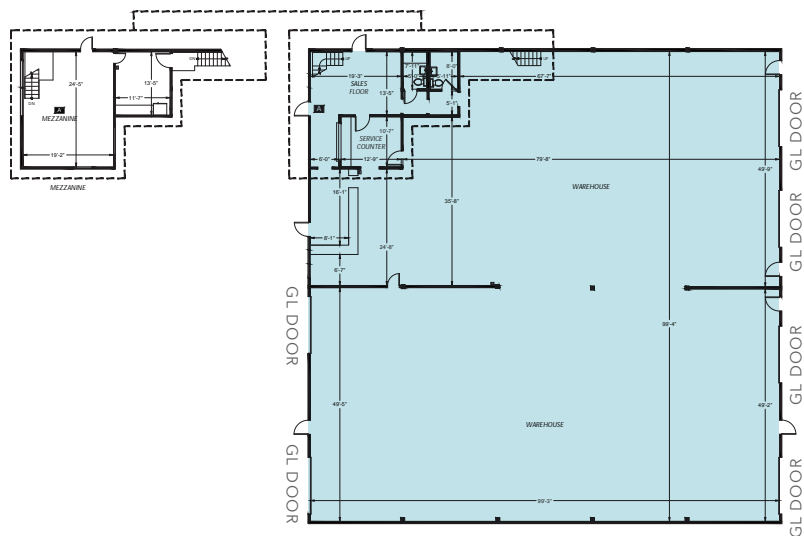


KIDDER.COM

This information supplied herein is from sources we deem reliable. It is provided without any representation, warranty, or guarantee, expressed or implied as to its accuracy. Prospective Buyer or Tenant should conduct an independent investigation and verification of all matters deemed to be material, including, but not limited to, statements of income and expenses. Consult your attorney, accountant, or other professional advisor.



SUITE A



SUITE B

