



OFFICES AT
**THE
YARD**

WHERE WORK
MEETS WINE
COUNTRY



CBRE



STEP INTO AN OFFICE EXPERIENCE UNLIKE ANY OTHER.

Ideally located within a vibrant new development featuring world-class wine tasting rooms, boutique retail, luxury hotels, and curated dining, this is the only office offering in the entire project — and it's designed for those who are looking for more than just a workspace.



The Harvest Experience

Harvest is a vibrant new mixed-use development set in the bucolic countryside of Woodinville, Washington, about 20 miles northeast of Seattle and 15 minutes north of Bellevue. It will be an everyday destination for, wine-tasting venues, retail offerings, restaurants, offices, an amenity-rich hotel and spa, event spaces, and luxury townhomes.



OFFICES AT

THE YARD

WHERE
BUSINESS
MEETS
PLEASURE

The best of the Pacific Northwest is all right here. Imagine hosting meetings steps away from renowned tasting rooms, strolling along the river or cruising on bikes at lunch, or networking over a glass of wine in a setting that inspires creativity and connection.

This is the intersection
of life and style.



BUILDING 6

13,030 SF
OFFICE SPACE
AVAILABLE

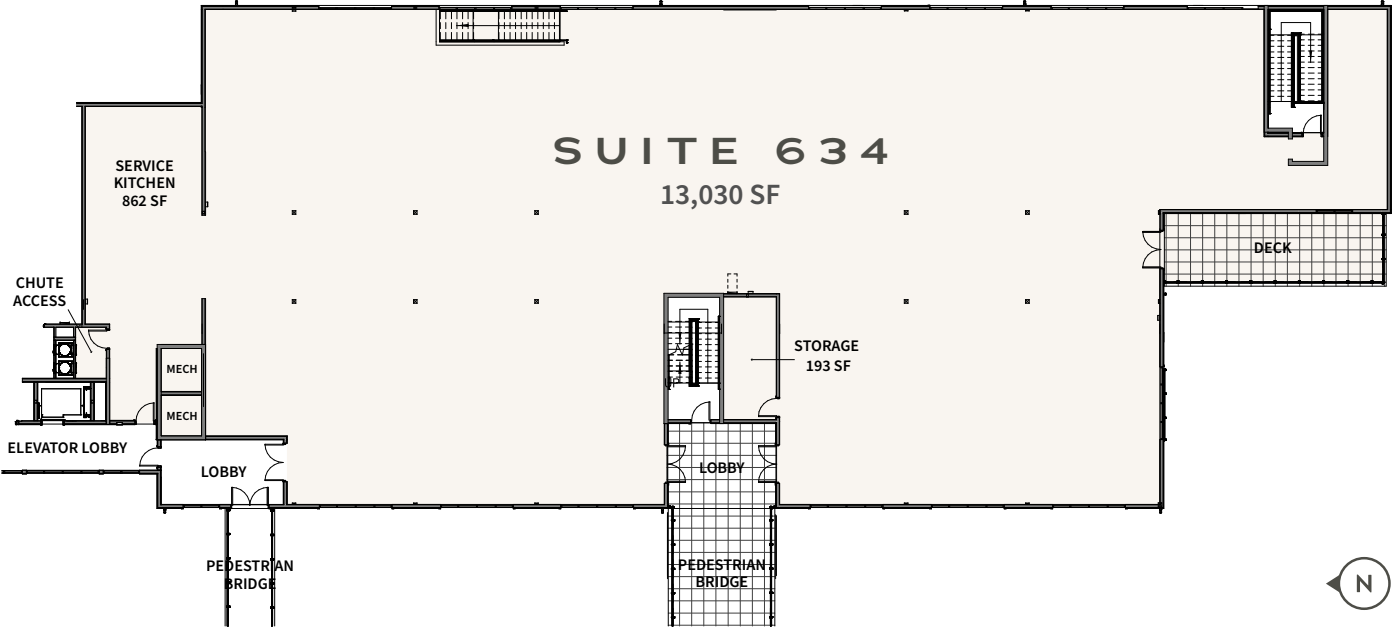
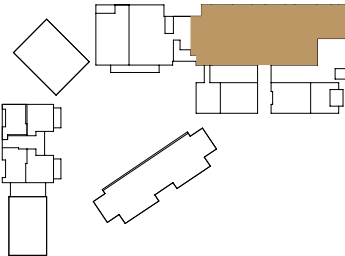
BUILDING 4

1,289 - 2,780 SF
OFFICE SPACE
AVAILABLE

Available Office Space

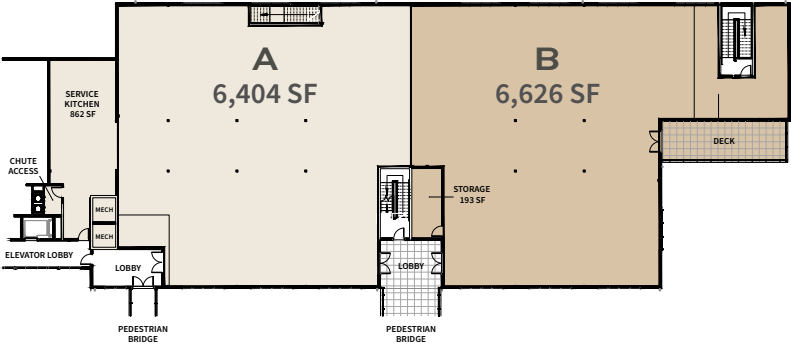
BUILDING 6

AVAILABLE
Q 4 2025

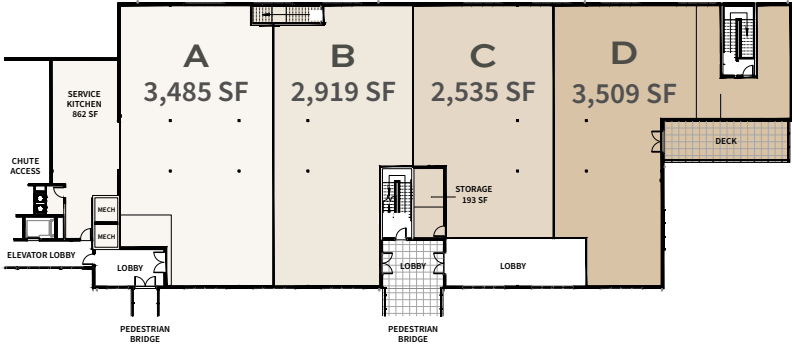


DEMISING PLANS

OPTION 1



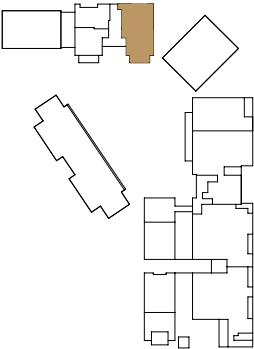
OPTION 2



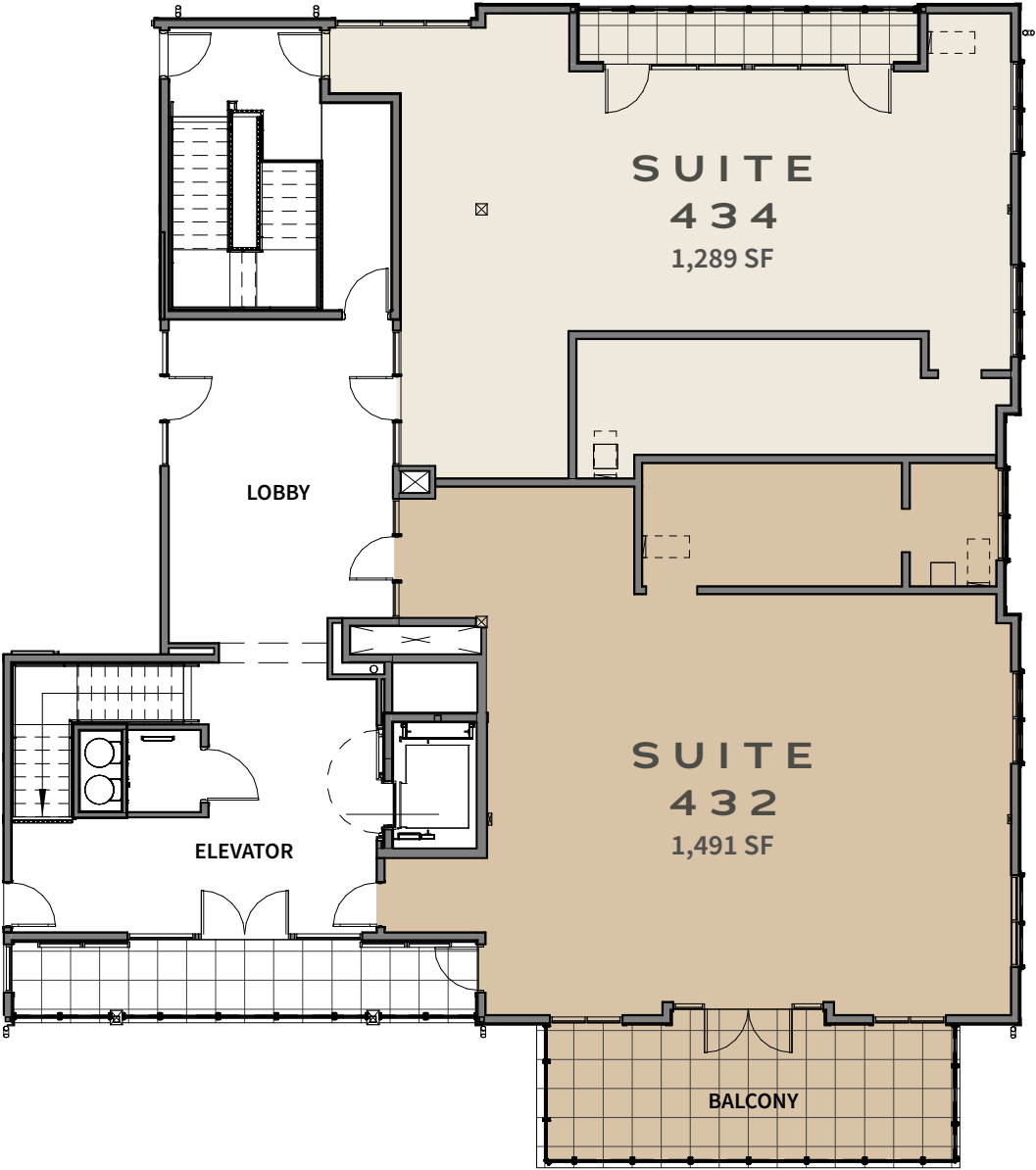
Available Office Space

BUILDING 4

AVAILABLE
Q4 2025



Suites will be delivered in
vanilla shell condition





OFFICES AT

THE YARD

TIM OWENS

Senior Vice President

T +1 425 462 6913

tim.owens@cbre.com

CBRE

© 2025 CBRE, Inc. All rights reserved. This information has been obtained from sources believed reliable, but has not been verified for accuracy or completeness. You should conduct a careful, independent investigation of the property and verify all information. Any reliance on this information is solely at your own risk. CBRE and the CBRE logo are service marks of CBRE, Inc. All other marks displayed on this document are the property of their respective owners, and the use of such logos does not imply any affiliation with or endorsement of CBRE. Photos herein are the property of their respective owners. Use of these images without the express written consent of the owner is prohibited. PMStudio_July2025

