

PARK 277

4503B D Street Northwest, Auburn, WA 98001

60,027 SF | FOR LEASE



Matt Wood, SIOR
206-595-6814
matt.wood@kbcadvisors.com

KBC Advisors | Seattle 5628 Airport Way South, Suite 238, Seattle, WA 98108



Ownership Advisor:





4503B D Street Northwest, Auburn, WA 98001

SPACE INFORMATION

Available October 1, 2025

60,027 SF total

3,347 SF office

9 dock-high doors (3 EOD Levelers, 3 Pit Levelers)

1 grade-level door

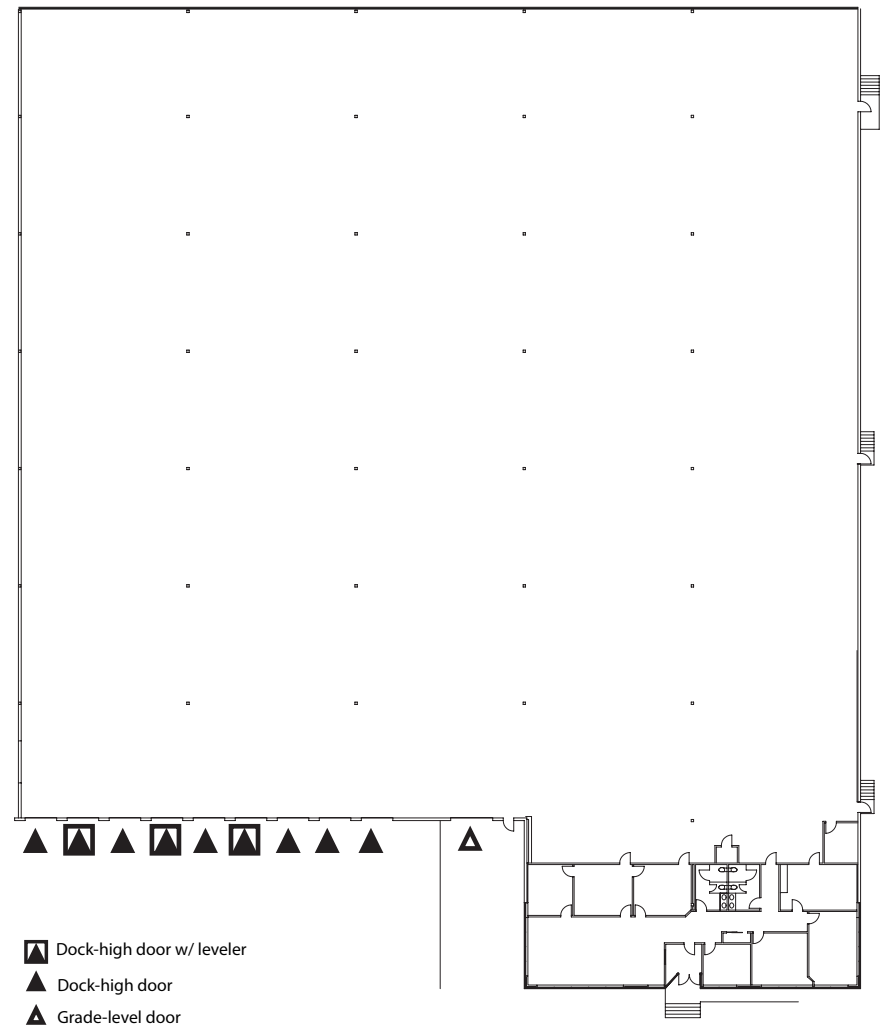
30' clear height

Breakroom with kitchenette

Unparalleled access to SR-167 & I-5

Equidistant to Port of Seattle & Port of Tacoma

FLOOR PLAN



Matt Wood, SIOR

206-595-6814

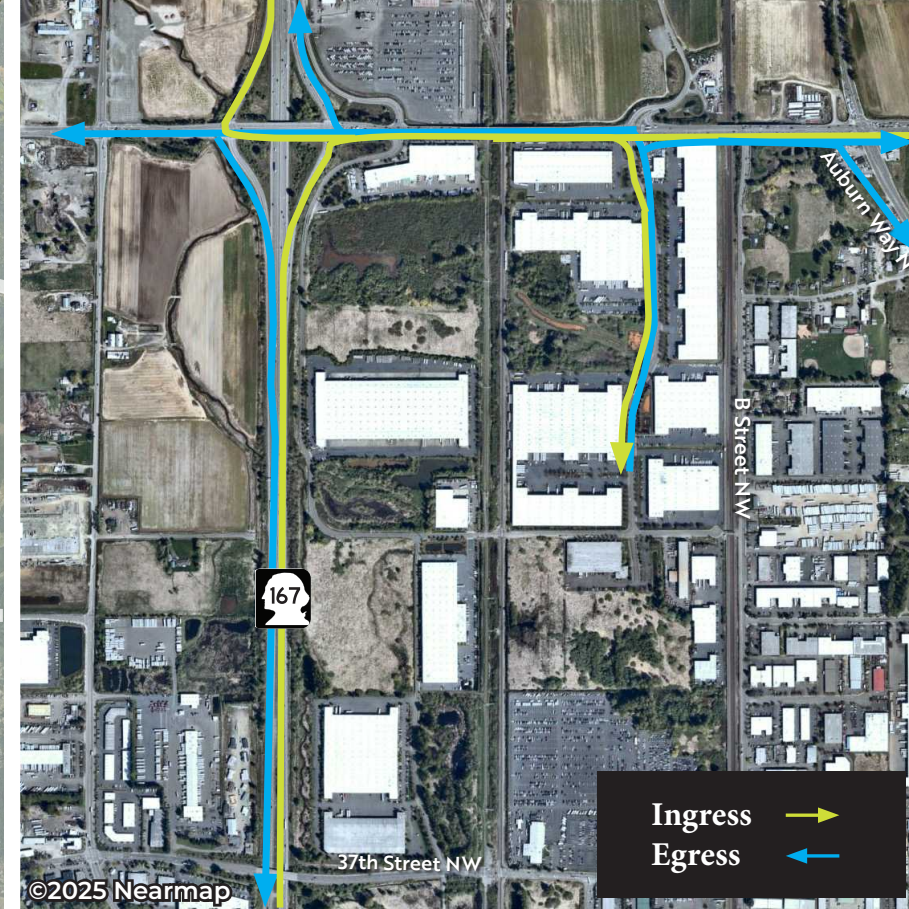
matt.wood@kbcadvisors.com

KBC Advisors | Seattle 5628 Airport Way South, Suite 238, Seattle, WA 98108



Ownership Advisor:





LOCATION

State Route 167	1 minute
Interstate 5	5 minutes
Port of Tacoma	25 minutes
Port of Seattle	25 minutes

Matt Wood, SIOR
206-595-6814
matt.wood@kbcadvisors.com



Ownership Advisor:

