

# HIGHLINE PROFESSIONAL BUILDING

16122 8TH AVENUE SW  
BURIEN, WA 98166  
PACIFIC ASSET ADVISORS, INC.



## LISTING DETAILS

**RENTABLE SF**  
**1,284 SF**

**\$20/SF +**  
**\$11.23/SF**  
**NNN**

**ADDRESS:** 16122 8th Avenue SW  
Buren, WA 98166

**SPACE AVAILABLE:** D2 - 1,284 SF

**TYPE:** Office/Medical

**HIGHLIGHTS:**

- Spaces are located on main hospital campus
- Flexible lease terms available
- Move-in ready
- Former Family Medicine Practice
  - Several exam rooms, Bathroom, Reception, etc

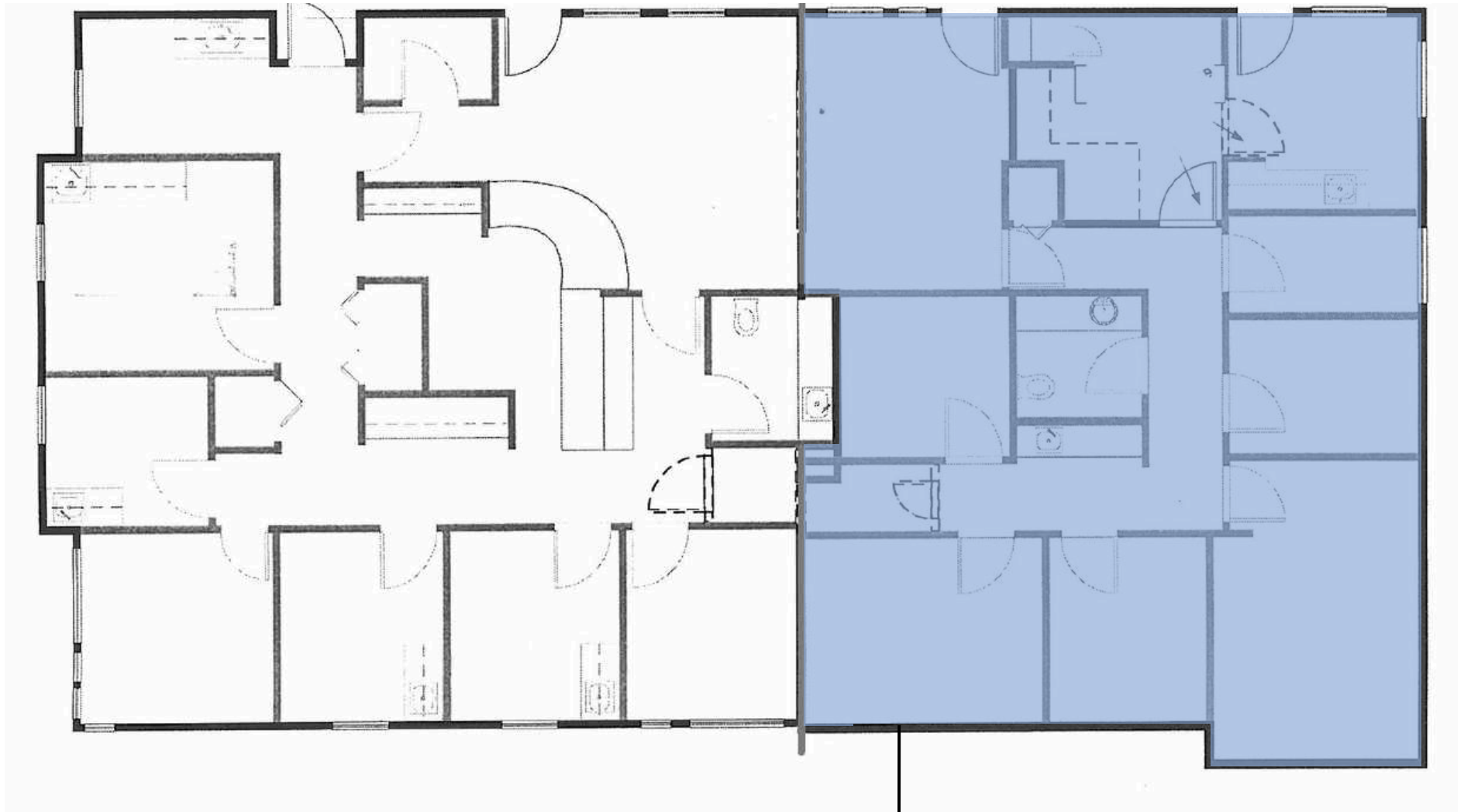
	1 MILE	3 MILES	5 MILES
<b>MEDIAN INCOME:</b>	\$117,997	\$109,885	\$107,854
<b>TOTAL POPULATION:</b>	14,882	76,661	190,366
<b>DAYTIME POPULATION:</b>	10,884	46,705	156,274

425.990.6200 | PAADVISORS.COM



# SITE PLAN

## SUITE D2



D2 - AVAILABLE  
1,284 SF

425.990.6200 | PAADVISORS.COM



AERIAL

HIGHLINE  
PUBLIC SCHOOLS

Value  
Village

HIGHLINE  
HIGH SCHOOL

CVS  
pharmacy

Virginia Mason  
Franciscan Health

SYLVESTER  
MIDDLE SCHOOL



425.990.6200 | PAADVISORS.COM



## CONTACT



**ADAM GREENBERG**  
SENIOR VICE PRESIDENT  
PARTNER  
425.503.1339  
ADAM@PAADVISORS.COM



**TYSON CLARKE**  
SENIOR VICE PRESIDENT  
PARTNER  
360.319.4855  
TYSON@PAADVISORS.COM

**PACIFIC ASSET ADVISORS, INC.**  
THE PREMIER CHOICE OF THE PACIFIC NORTHWEST

14205 SE 36TH ST, SUITE 215, BELLEVUE, WA 98006