

# SIX MONTHS OF FREE RENT

## *White & Hitchcock Building*

Located at 2228-2234 First Ave, Seattle, WA

Rent ready space with wood floors and exposed ceiling

Less than a half mile from the SLU streetcar, Westlake Center Link light rail tunnel, and the Pike Place Market

Easy access to I-5 and Highway 99

One block walk to bus stop

Walking distance to numerous restaurants, grocery, pharmacy and shopping

100 Transit Score and 99 Walk Score

### AVAILABILITIES

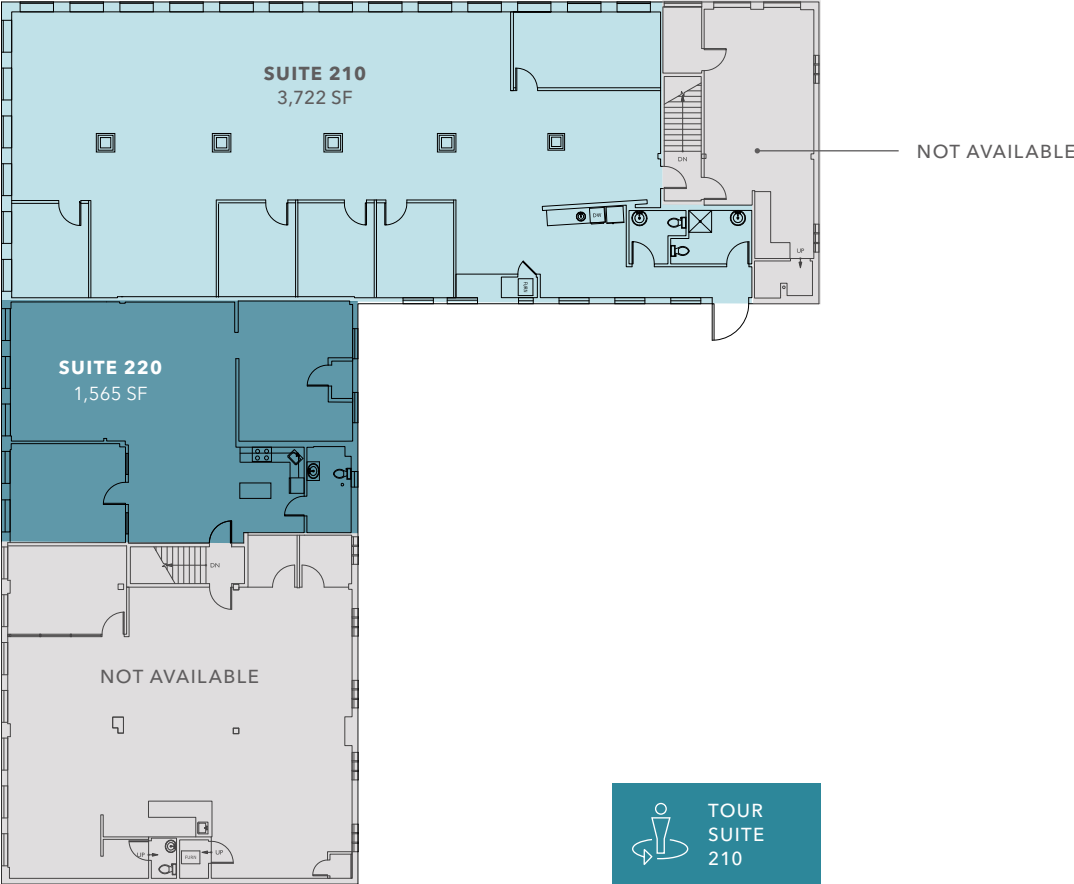
Suite	Size
Suite 210	3,722 SF
Suite 220	1,565
Suite 210/220	5,287 SF

### KIDDER.COM

This information supplied herein is from sources we deem reliable. It is provided without any representation, warranty, or guarantee, expressed or implied as to its accuracy. Prospective Buyer or Tenant should conduct an independent investigation and verification of all matters deemed to be material, including, but not limited to, statements of income and expenses. Consult your attorney, accountant, or other professional advisor. All Kidder Mathews designs are the sole property of Kidder Mathews. Branded materials and layouts are not authorized for use by any other firm or person.

DAVID GURRY 206.931.6474 | david.gurry@kidder.com

DAN DAHL 206.650.6154 | dan.dahl@kidder.com



AVAILABILITIES

Suite	Size	Monthly Rent	Lease Rate (SF/YR)
Suite 210	3,722 SF	\$8,685	\$28.00
Suite 220	1,565 SF	\$3,652	\$28.00
Suite 210/220	5,287 SF	\$12,336	\$28.00

KIDDER.COM

This information supplied herein is from sources we deem reliable. It is provided without any representation, warranty, or guarantee, expressed or implied as to its accuracy. Prospective Buyer or Tenant should conduct an independent investigation and verification of all matters deemed to be material, including, but not limited to, statements of income and expenses. Consult your attorney, accountant, or other professional advisor. All Kidder Mathews designs are the sole property of Kidder Mathews. Branded materials and layouts are not authorized for use by any other firm or person.