


INDUSTRIAL/MANUFACTURING FOR LEASE




 675 W Capstone Court,
Hayden, ID 83835

Offered at
\$7,600
Per Month, NNN

AIN: 222748

Exceptional 7,207 square foot single-tenant industrial/manufacturing/distribution for lease in Hayden, Idaho, just south of Walmart. Perfectly positioned with easy access from Highway 95 and Prairie Avenue, this modern property blends professional style with versatile functionality. The main level spans 6,871 square feet, with approximately 5,400 square feet of warehouse space and 1,471 square feet of office space. The inviting glass entryway leads to a built-in reception desk and a waiting room, complemented by an open work area, two private offices, and two restrooms. An additional 336 square foot upstairs office, accessible from the warehouse, features a window overlooking the warehouse floor, alongside a dedicated storage room. Equipped with robust 600 Amps, 480V, 3-Phase power and high-speed fiber communication, this property is designed for seamless business operations. Ample paved parking and beautifully landscaped grounds enhance its appeal.

 **ROB KANNAPIEN**
208.704.3832
robk@ccim.net

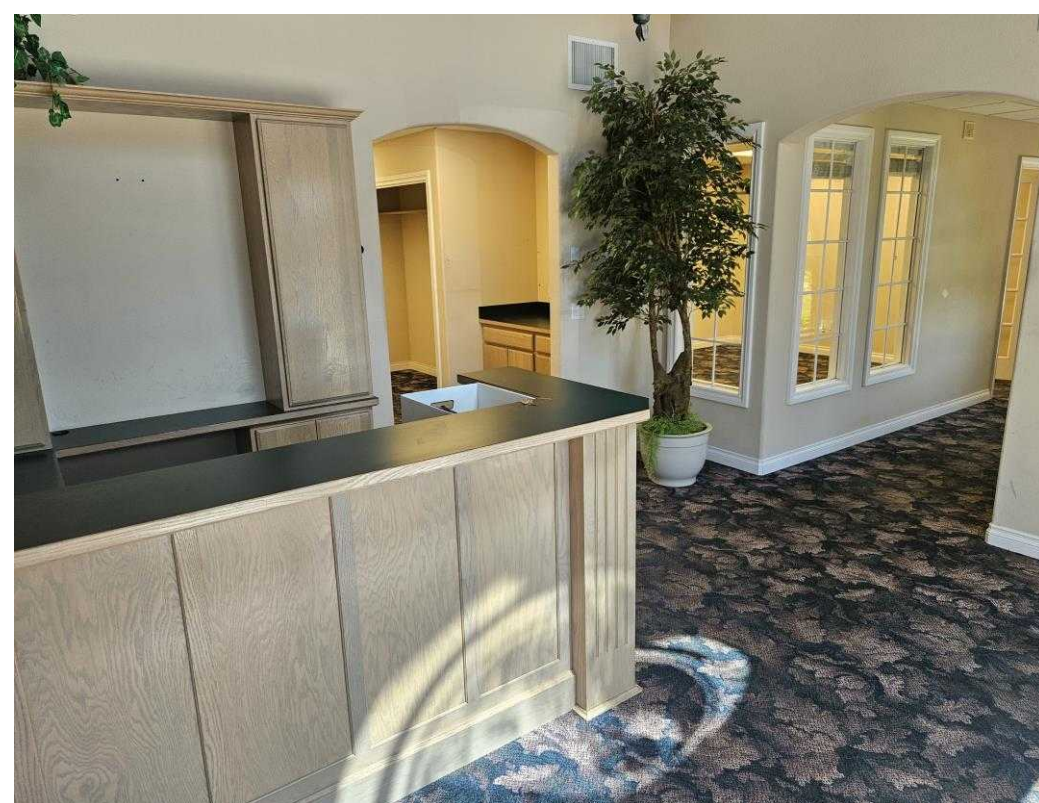
 **COLDWELL BANKER
COMMERCIAL**
SCHNEIDMILLER REALTY
2000 Northwest Blvd, CdA, ID 83814

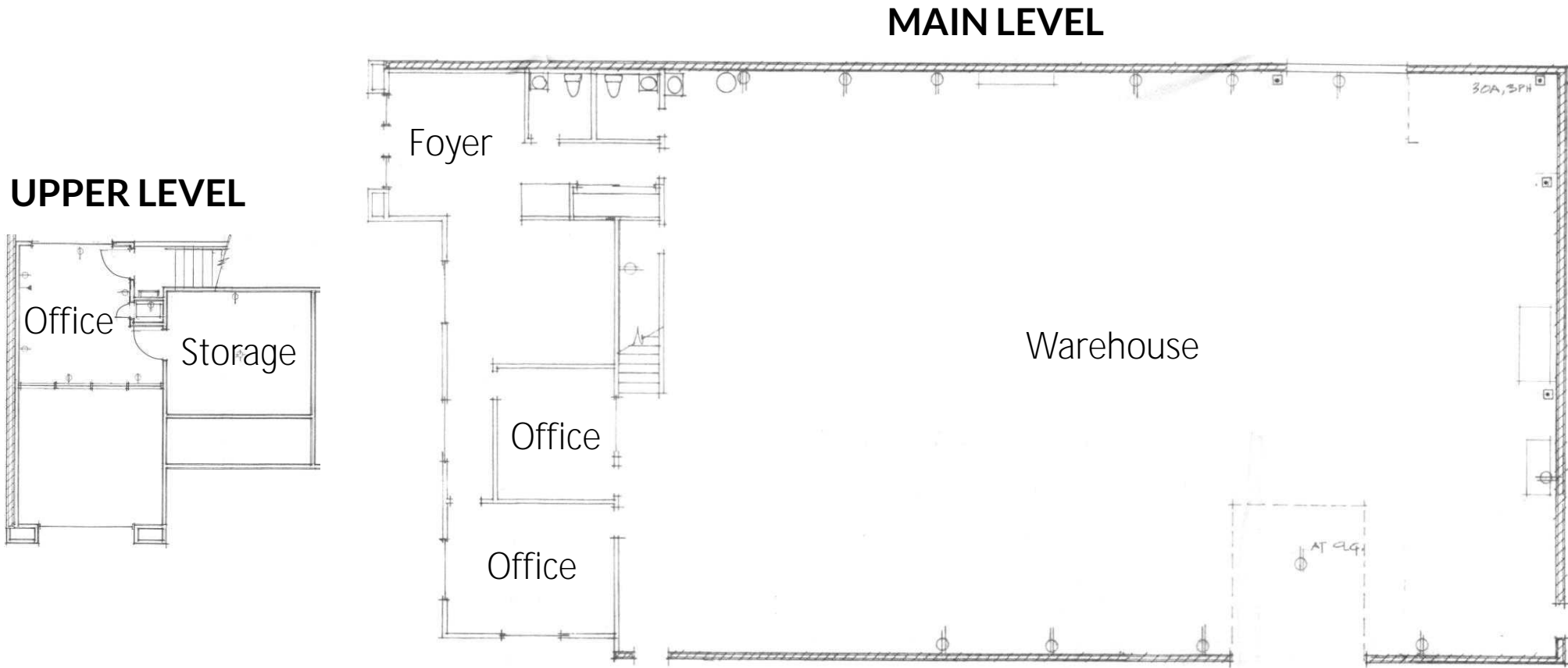
 **CRAIG HUNTER**
208.929.2929
hunter@ccim.net

 **KIEMLE
HAGOOD**
1579 Riverstone Drive, 102
Coeur d'Alene, ID 83814

 **CCIMTEAM.COM**
  

Data is deemed reliable, no warranties or representations expressed or implied. Broker not responsible for changes, errors, omissions, or prior sale without notice. All critical measurements shall be done by Lessee or Buyer.





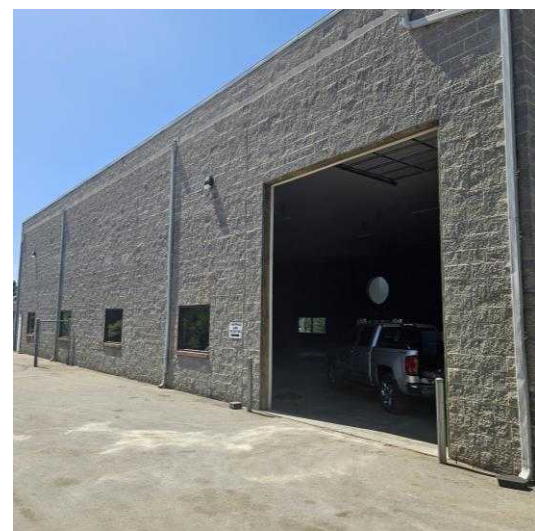
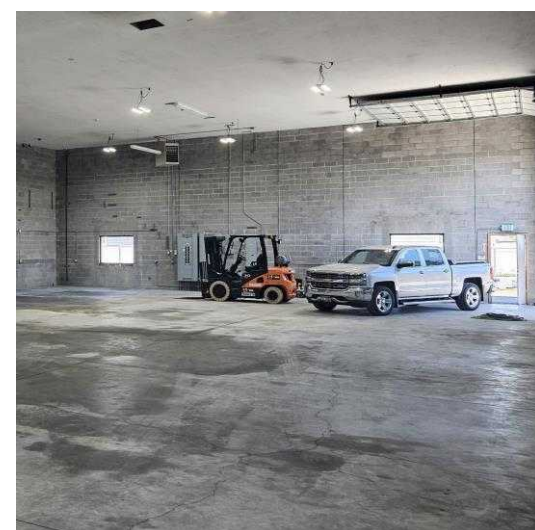
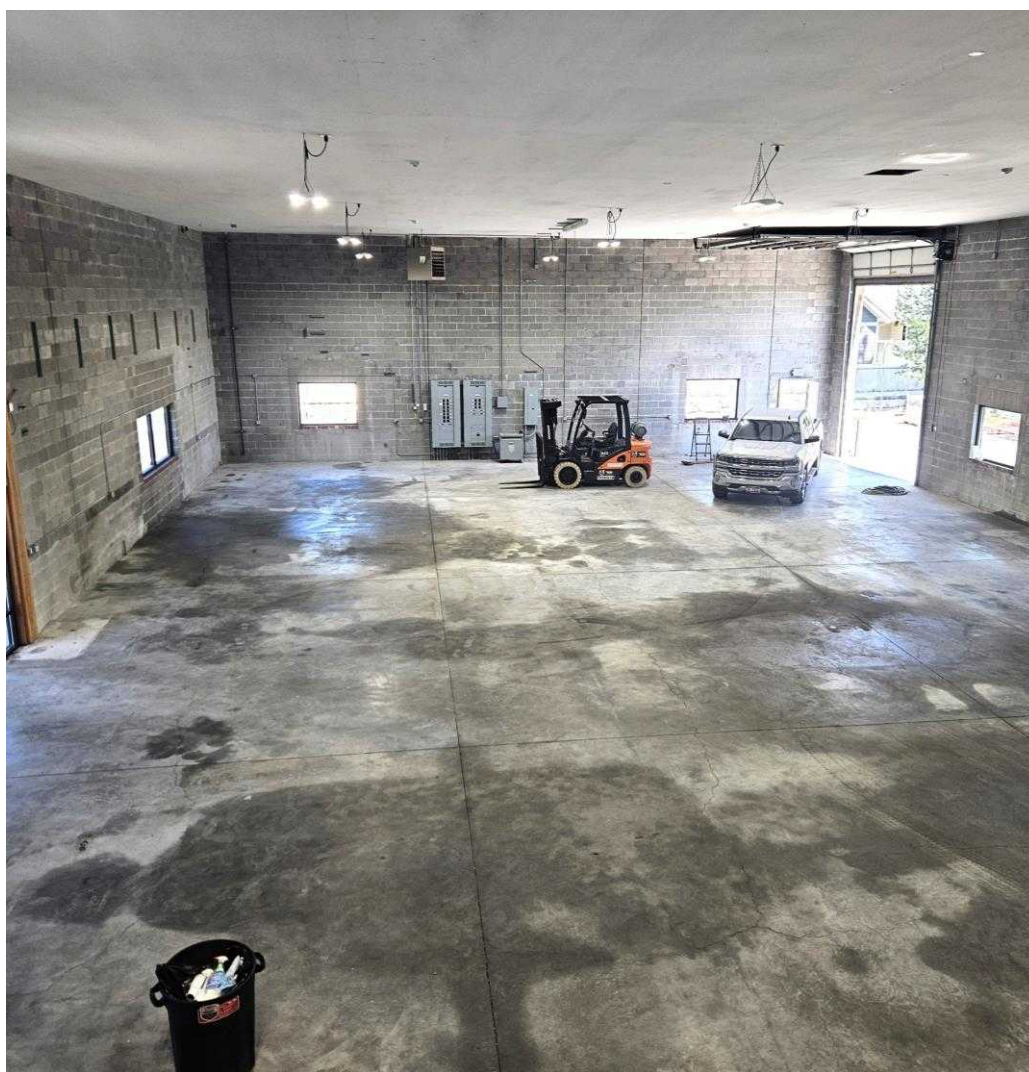
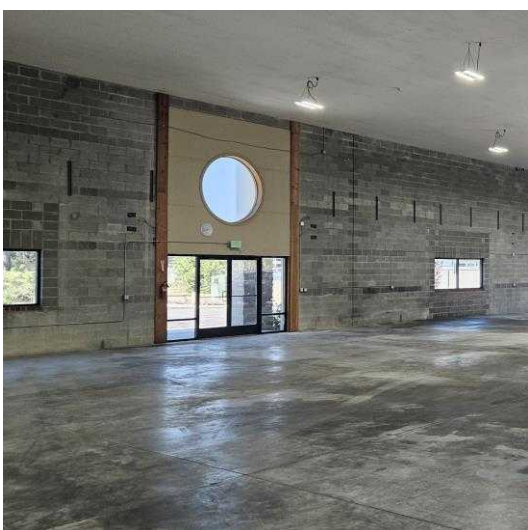
ROB KANNAPIEN
208.704.3832
robk@ccim.net

COLDWELL BANKER COMMERCIAL
SCHNEIDMILLER REALTY
2000 Northwest Blvd, CdA, ID 83814

CRAIG HUNTER
208.929.2929
hunter@ccim.net

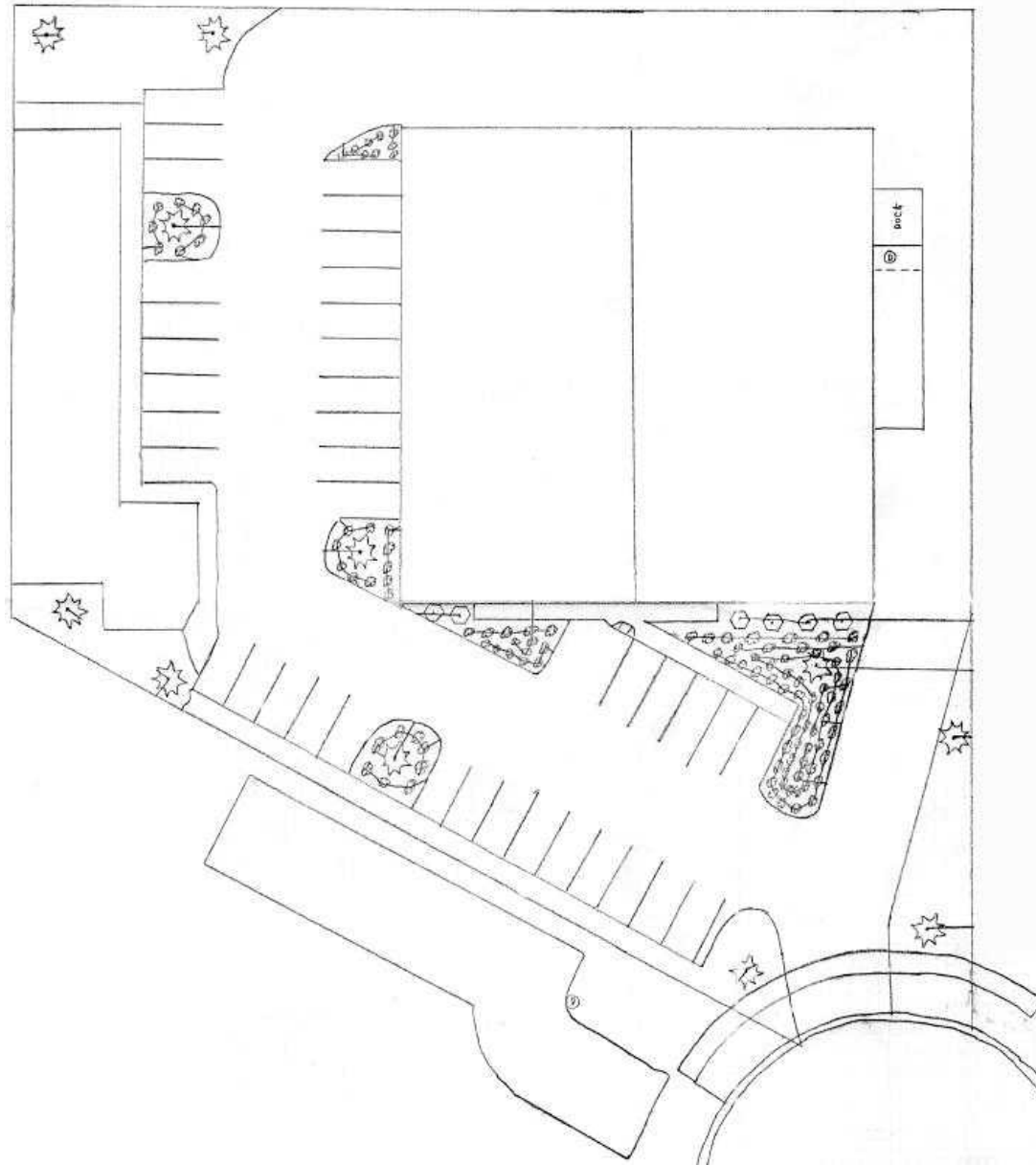
KIEMLE HAGOOD
1579 Riverstone Drive, 102
Coeur d'Alene, ID 83814

CCIMTEAM.COM
CCIM



SITE PLAN

Images are for illustration purposes only



ROB KANNAPIEN
208.704.3832
robk@ccim.net



**COLDWELL BANKER
COMMERCIAL**
SCHNEIDMILLER REALTY
2000 Northwest Blvd, CdA, ID 83814



CRAIG HUNTER
208.929.2929
hunter@ccim.net

**KIEMLE
HAGOOD**
1579 Riverstone Drive, 102
Coeur d'Alene, ID 83814



CCIMTEAM.COM



Data is deemed reliable, no warranties or representations expressed or implied. Broker not responsible for changes, errors, omissions, or prior sale without notice. All critical measurements shall be done by Lessee or Buyer.

CLOSE-UP

Images are for illustration purposes only



Capstone Court



ROB KANNAPIEN
208.704.3832
robk@ccim.net



**COLDWELL BANKER
COMMERCIAL**
SCHNEIDMILLER REALTY
2000 Northwest Blvd, CdA, ID 83814



CRAIG HUNTER
208.929.2929
hunter@ccim.net

**KIEMLE
HAGOOD**

1579 Riverstone Drive, 102
Coeur d'Alene, ID 83814



CCIMTEAM.COM



Data is deemed reliable, no warranties or representations expressed or implied. Broker not responsible for changes, errors, omissions, or prior sale without notice. All critical measurements shall be done by Lessee or Buyer.

Images are for illustration purposes only



Data is deemed reliable, no warranties or representations expressed or implied. Broker not responsible for changes, errors, omissions, or prior sale without notice. All critical measurements shall be done by Lessee or Buyer.