

AVAILABLE

YOUR
SIGN HERE

Senior Doc

FOR LEASE

922 State Avenue
Marysville, Washington

MARYSVILLE CENTER

Dale Goong | Chandler Williams | Steve Erickson



First Western Properties, Inc. | 425.822.5522 | fwp-inc.com
11621 97th Lane NE, Kirkland, Washington 98034

922 STATE AVENUE:

- End Cap: 2,400 SF Available, \$24.00 PSF + \$4.40 PSF NNN
- Neighboring Tenants Include Senior Doc & Hotrod Barbershop
- Pylon Signage Panel Available
- High Visibility Strip Retail Building & Freestanding Office Building
- Easy Access On/Off Busy State Avenue



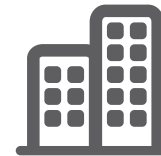
SIGNAGE



Population



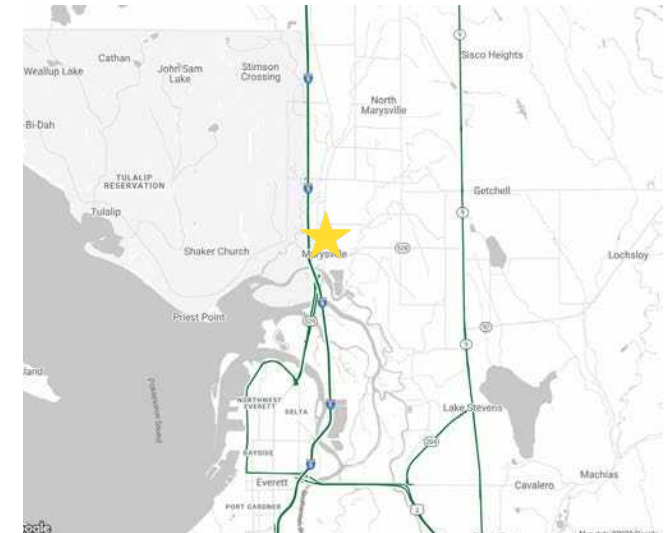
Median HH Income

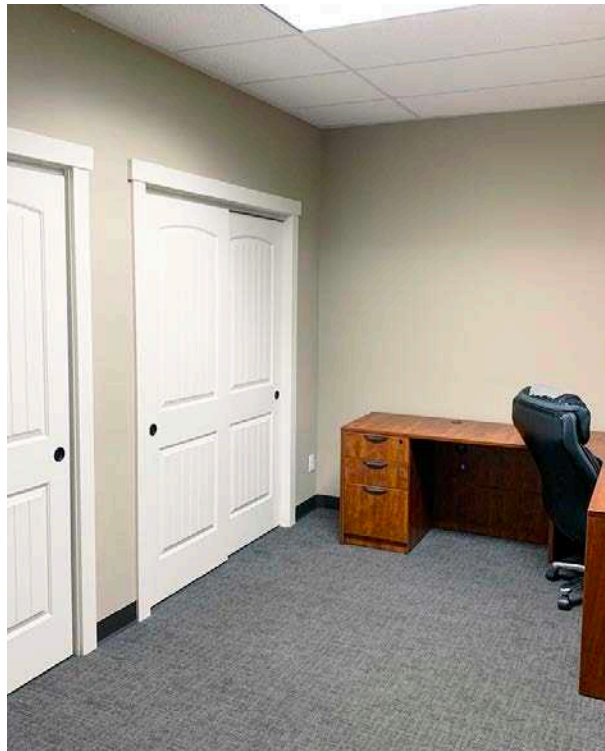


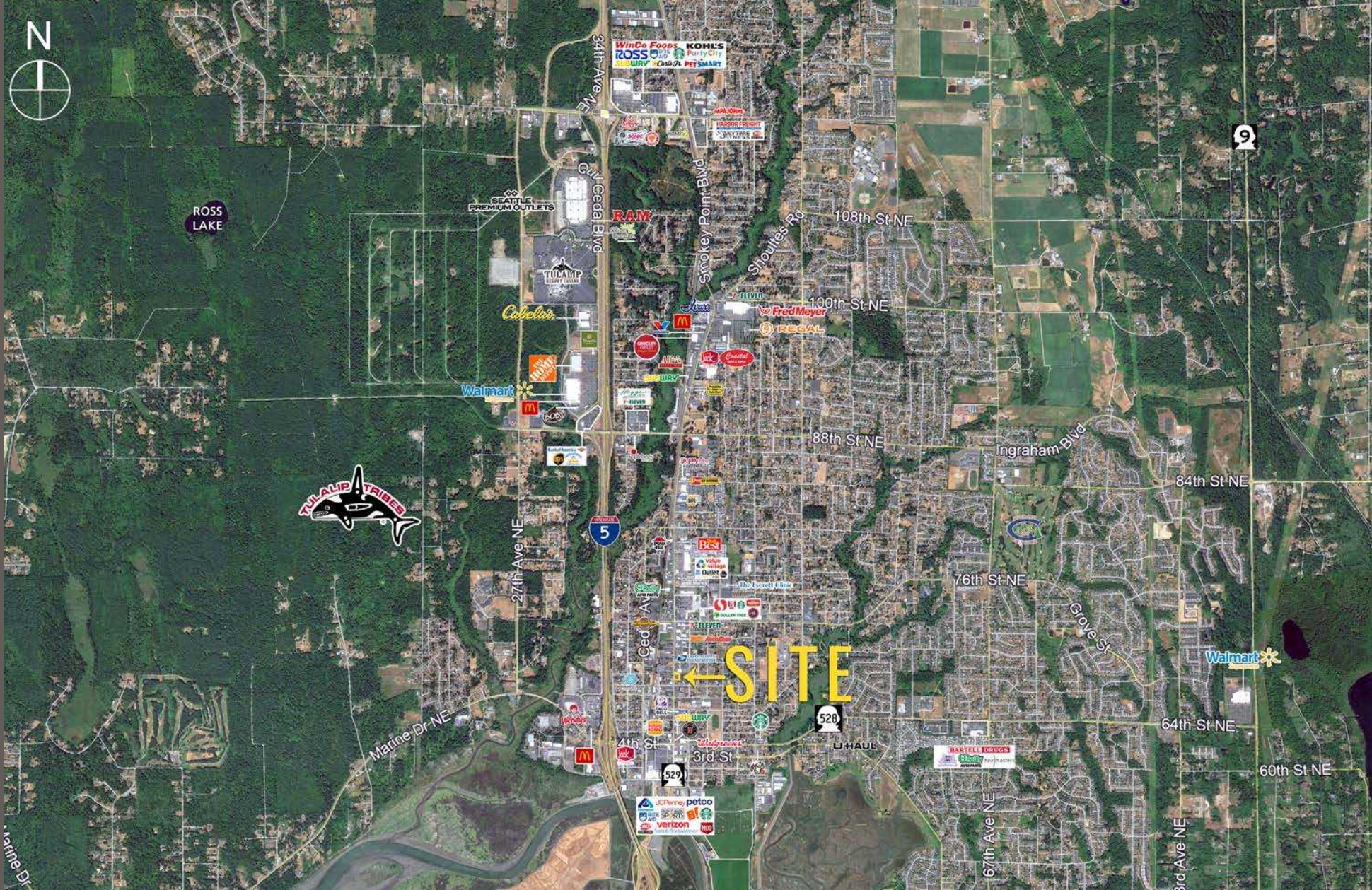
Daytime Population

Regis - 2024

	Population	Median HH Income	Daytime Population
Mile 1	10,691	\$73,237	4,833
Mile 3	55,715	\$124,062	12,267
Mile 5	106,949	\$129,832	24,846







Boeing Expanding 1M SF
in Snohomish County



Located Minutes
from Interstate 5



15,411 ADT
State Avenue



39,495 Households
5 Mile Radius

KIRKLAND | TACOMA | PORTLAND | SEATTLE



RELATIONSHIP FOCUSED. RESULTS DRIVEN.

DALE GOONG

425.250.3275
dale@fwp-inc.com

CHANDLER WILLIAMS

206.518.1170
chandler@fwp-inc.com

STEVE ERICKSON

425.822.5522
serickson@fwp-inc.com



First Western Properties, Inc. | 425.822.5522
11621 97th Lane NE Kirkland, WA 98034 | fwp-inc.com

© First Western Properties, Inc. DISCLAIMER: The above information has been secured from sources believed to be reliable, however, no representations are made to its accuracy. Prospective tenants or buyers should consult their professional advisors and conduct their own independent investigation. Properties are subject to change in price and/or availability without notice.