

FOR LEASE

Prime retail space
next to Kitsap Mall in
Silverdale.



3235 NW Plaza Road

Silverdale, WA 98383

PROPERTY HIGHLIGHTS

- + 3,500 SF available
- + Located with easy access to Highways 3 and 303, just off Silverdale Way
- + Prominent retail pad located in front of Hobby Lobby, one block from Target, and across from the Kitsap Mall with new Winco
- + Tremendous visibility - this regional site serves the entire Kitsap Peninsula
- + Call broker for rates

BARRY KELLY

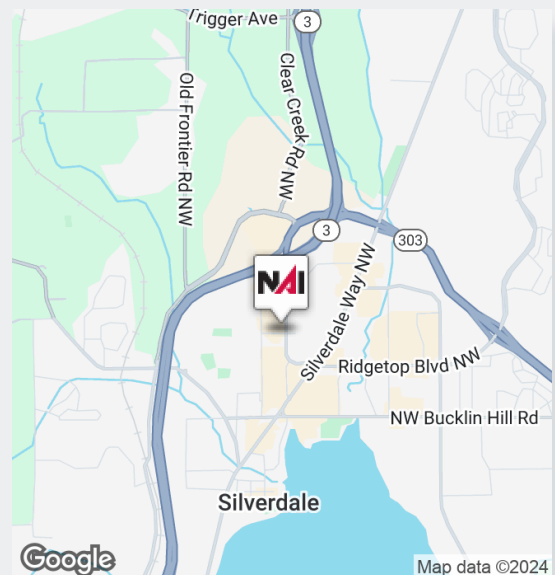
Partner

+1 425 444 9357

bkelly@nai-psp.com



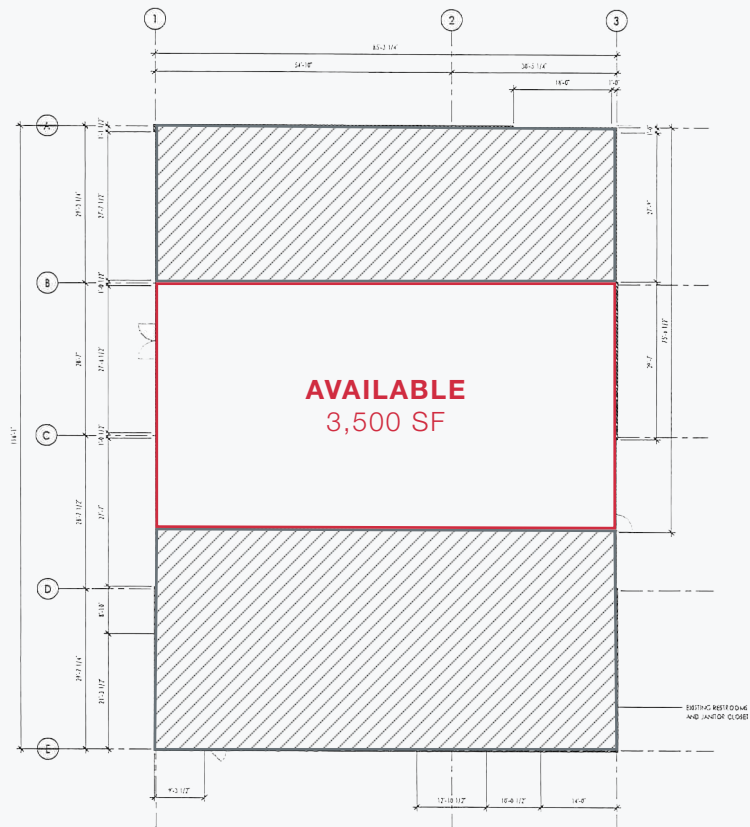
THE INFORMATION CONTAINED HEREIN HAS BEEN GIVEN TO US BY THE OWNER OF THE PROPERTY OR OTHER SOURCES WE DEEM RELIABLE, WE HAVE NO REASON TO DOUBT ITS ACCURACY, BUT WE DO NOT GUARANTEE IT. ALL INFORMATION SHOULD BE VERIFIED PRIOR TO PURCHASE OR LEASE.



nai-psp.com

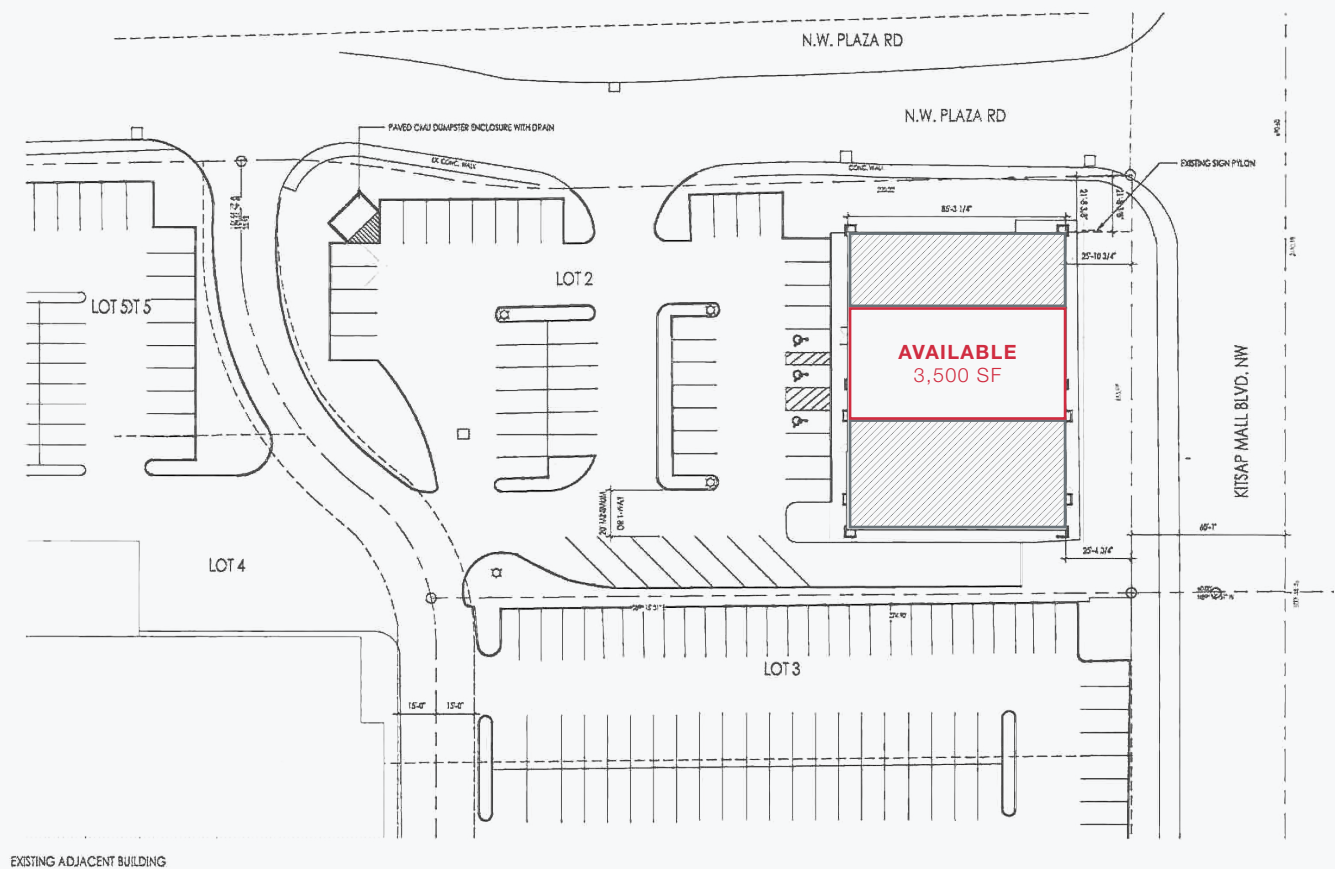


Site Plan





Site Plan



Retailer Map



BARRY KELLY

Partner

+1 425 444 9357

bkelly@nai-psp.com

