



FOR SALE OR SUBLEASE

15310 Main Street
Mill Creek, WA 98012

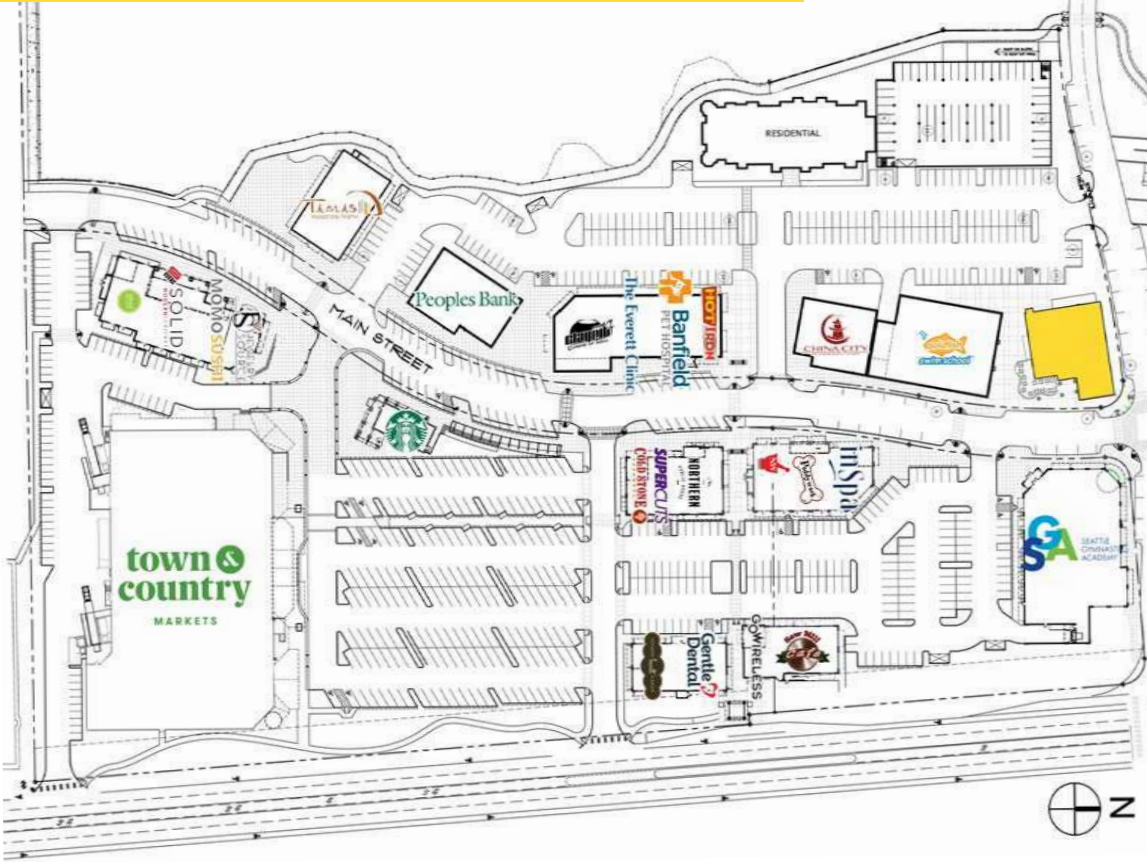


FORMER BOSTON'S PIZZA

Steve Erickson | Nathan Belo, Skyline Properties

First Western Properties, Inc. | 425.822.5522
11621 97th Lane NE, Kirkland, WA 98034 | fwp-inc.com

15310 MAIN STREET



Building Size	6,272 SF (0.28 acres)
Opportunity Type	For Sale or Retail Sub-lease
Parcel #	27050600204500
Year Built	2006
Zoning	PCB (Planned Community Business)
Traffic Counts	29,265 at Intersection SR 527 & 153rd St. SE
Sublease Rent	\$38.00 PSF, NNN
Purchase Price	\$800,000 (125.55 PSF) + Building Insurance

MILL CREEK TOWN CENTER | BOSTON'S PIZZA

is a built-out restaurant building on pad with a land lease until 12/31/2045. The site is available for sale or for retail sublease. Part of the Mill Creek Town Center, a lifestyle center featuring over 80 shops, restaurants, and services. The center acts as the social and commercial hub for the community, offering a pedestrian friendly environment, with shop lined streets, public plazas, and excellent parking.

The building has a separate bar, outdoor patio with heaters, 2 type 1 hoods, 1 type 2 hood for a pizza oven, 2 walk in coolers, and 1 walk in freezer. Please note: less than 1,000 retail SF can be used for grocery/deli.

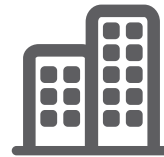
SUMMARY



Population



Average HH Income



Daytime Population

Regis - 2025

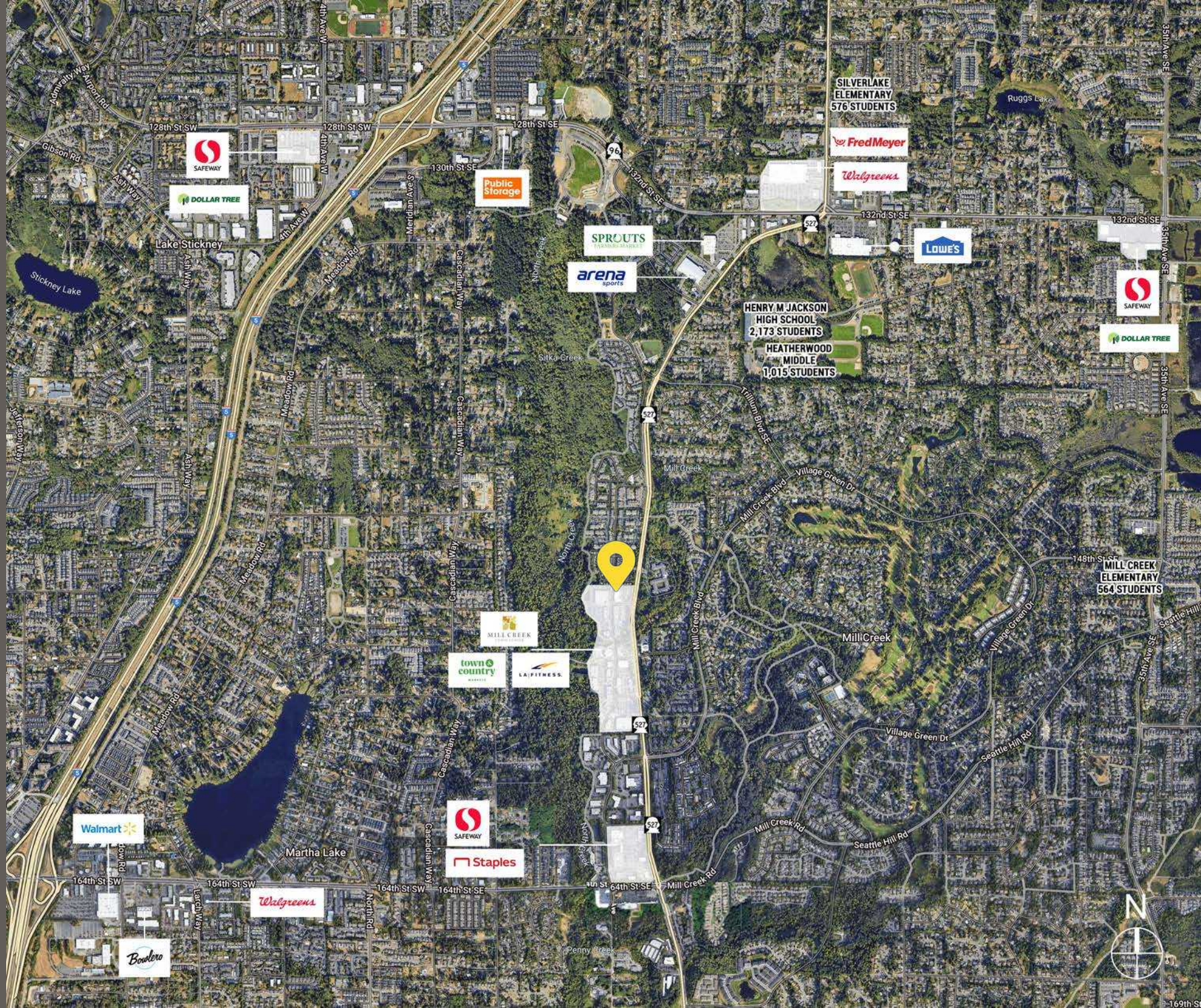
	Population	Average HH Income	Daytime Population
Mile 1	14,713	\$156,031	4,099
Mile 3	166,867	\$154,336	27,206
Mile 5	349,011	\$154,464	95,322

FORMER TENANT INTERIOR IMAGES



SUMMARY

LOCATION AERIAL



Walmart

SAFeway

DOLLAR TREE

Public Storage

SPROUTS

arena sports

HENRY M JACKSON HIGH SCHOOL
2,173 STUDENTS

HEATHERWOOD MIDDLE
1,015 STUDENTS

SILVERLAKE ELEMENTARY
576 STUDENTS

Fred Meyer

Walgreens

LOWE'S

SAFeway

DOLLAR TREE

MILL CREEK

town country

LA FITNESS

MILL CREEK ELEMENTARY
564 STUDENTS

SAFeway

Staples

Walgreens

Booleo



KIRKLAND | TACOMA | PORTLAND | SEATTLE

RELATIONSHIP FOCUSED.
RESULTS DRIVEN.


STEVE ERICKSON


 425.822.5522

 serickson@fwp-inc.com



NATHAN BELO

 206.686.8989

 nathan@licensetosell.com

**FIRST
WESTERN
PROPERTIES**

First Western Properties, Inc. | 425.822.5522

11621 97th Lane NE, Kirkland, WA 98034 | fwp-inc.com

© First Western Properties, Inc. DISCLAIMER: The above information has been secured from sources believed to be reliable, however, no representations are made to its accuracy. Prospective tenants or buyers should consult their professional advisors and conduct their own independent investigation. Properties are subject to change in price and/or availability without notice.