

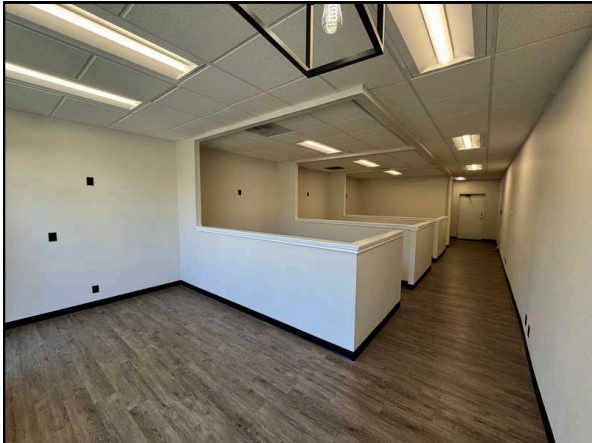


**4501 INTERLAKE AVE N**

SEATTLE, WA 98103

PACIFIC ASSET ADVISORS, INC.

## LISTING DETAILS



RENTABLE SF

907 SF

CALL  
FOR  
RATE

ADDRESS: 4501 Interlake Ave N, Seattle, WA 98103

SPACE AVAILABLE: Suite 5

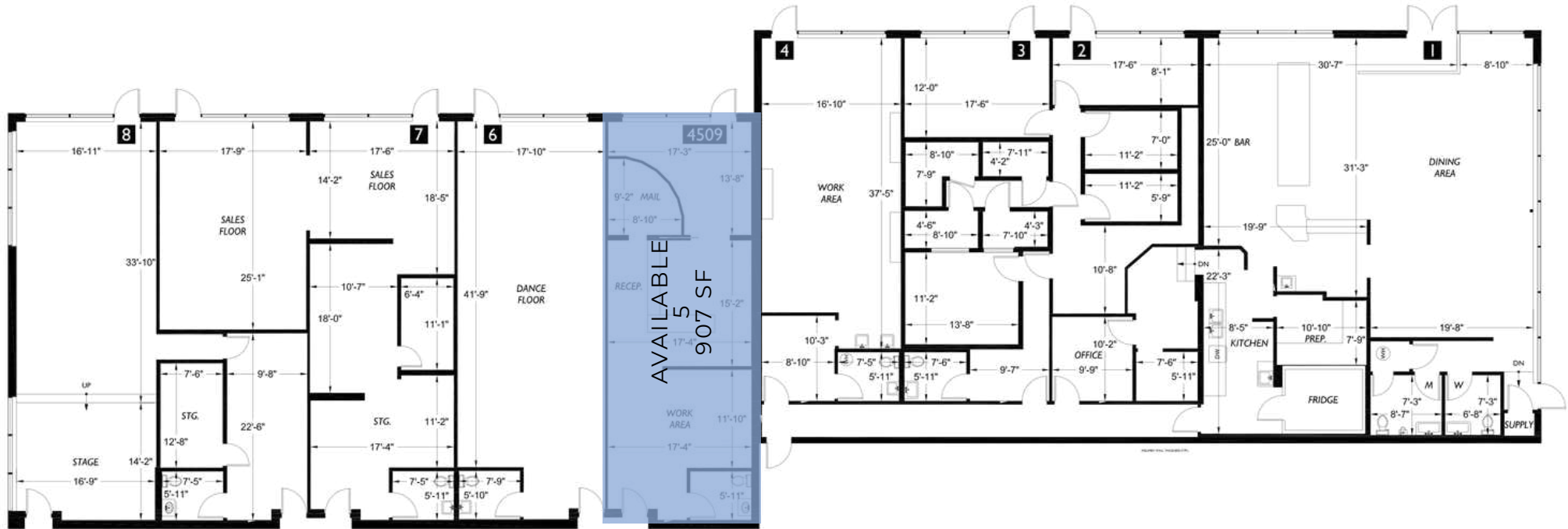
### SITE DESCRIPTION:

- Wallingford neighborhood
- Turnkey setup
- Easy vehicle access from Stone Way N (5,000 VPD) and N 45<sup>th</sup> St (14,000 VPD)
- Excellent walkability
- 5 minute drive from Woodland Park Zoo and Green Lake

	1 MILE	3 MILES	5 MILES
MEDIAN INCOME:	\$142,199	\$143,425	\$137,262
TOTAL POPULATION:	38,061	320,730	559,660
DAYTIME POPULATION:	25,298	217,121	502,938

425.990.6200 | PAADVISORS.COM

# SITE PLAN



## AVAILABILITY

**SUITE**

5

**SQ FT**

907

AERIAL

BALLARD

Green Lake



BevMo!

Fred Meyer

FREMONT

WALLINGFORD



425.990.6200 | PAADVISORS.COM

## CONTACT



**TORI HERMAN**

ASSOCIATE BROKER

425.300.5770

TORI@PAADVISORS.COM



**ADAM GREENBERG**

SENIOR VICE PRESIDENT

PARTNER

425.503.1339

ADAM@PAADVISORS.COM

**PACIFIC ASSET ADVISORS, INC.**

THE PREMIER CHOICE OF THE PACIFIC NORTHWEST

14205 SE 36TH ST, SUITE 215, BELLEVUE, WA 98006