

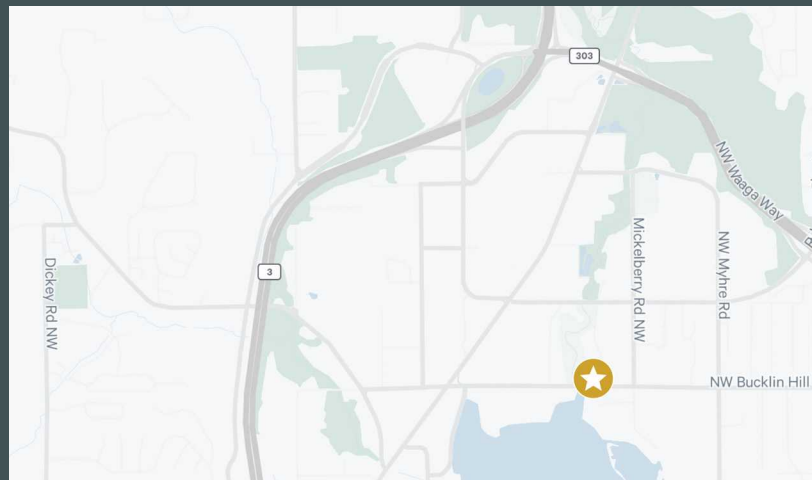
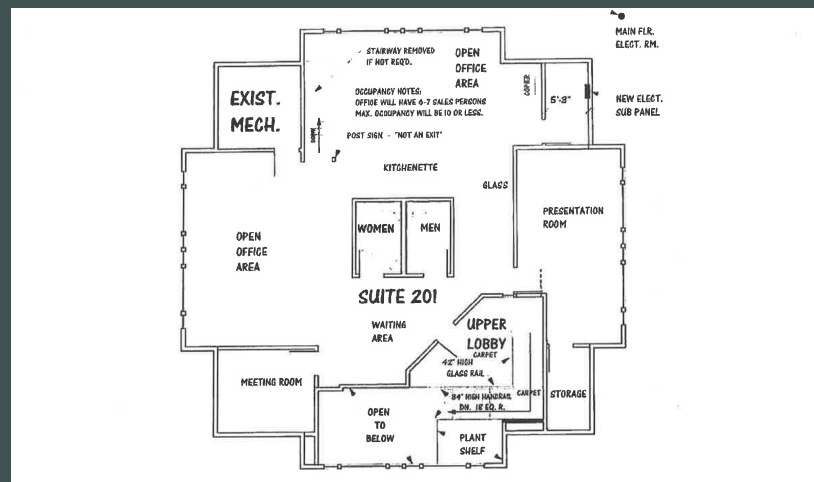
9619 Levin Rd NW

9619 Levin Rd NW
Suite 200
Silverdale, WA 98383

Sublease Available Now

- + 2,951 SF of Office Space
- + Adjacent to Clear Creek Trail
- + In the heart of Silverdale
- + Easy access to Hwy 3
- + Views of Dyes Inlet

Available Now



Contact Us

Andrew Hitchcock
Executive Vice President
+1 206 790 2211
andrew.hitchcock@cbre.com