

# PORT OF EDMONDS ADMINISTRATION BUILDING

471 Admiral Way, Edmonds, WA 98020



**RETAIL / OFFICE SPACE FOR LEASE**

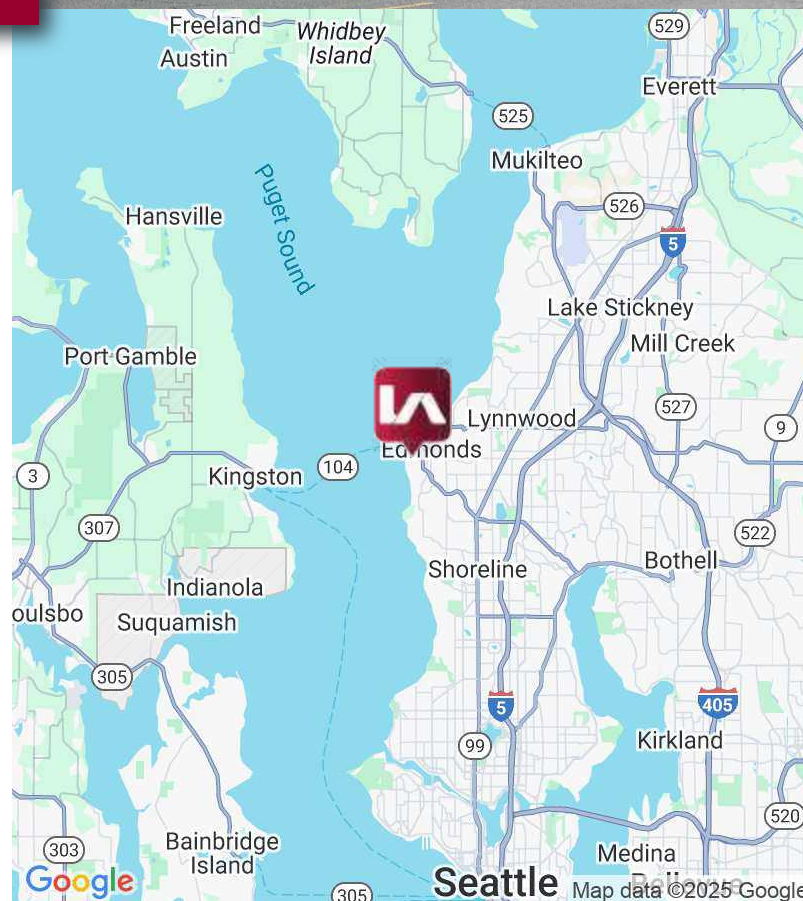
**Sizes Ranging from 900 RSF - 1,925 RSF**

## LISTING INFORMATION

ADDRESS:	471 Admiral Way, Edmonds, WA
AVAILABLE SF:	900 - 1,925 SF
LEASE RATE:	\$30.00 - \$35.00 SF/Year, plus NNN

## COMMENTS

First floor office/retail space, shell condition, close to Edmonds waterfront. Great location with excellent natural light, high ceilings, Class-A, high quality construction and great exposure on main access to all of the waterfront restaurants, marinas, parks and commercial businesses. New construction with strong corporate image.





# PORT OF EDMONDS ADMINISTRATION BUILDING

471 Admiral Way, Edmonds, WA 98020



## PROPERTY PHOTOS



## CONTACT

**Scott Eshelman**

seshelman@lee-associates.com

206.773.2685

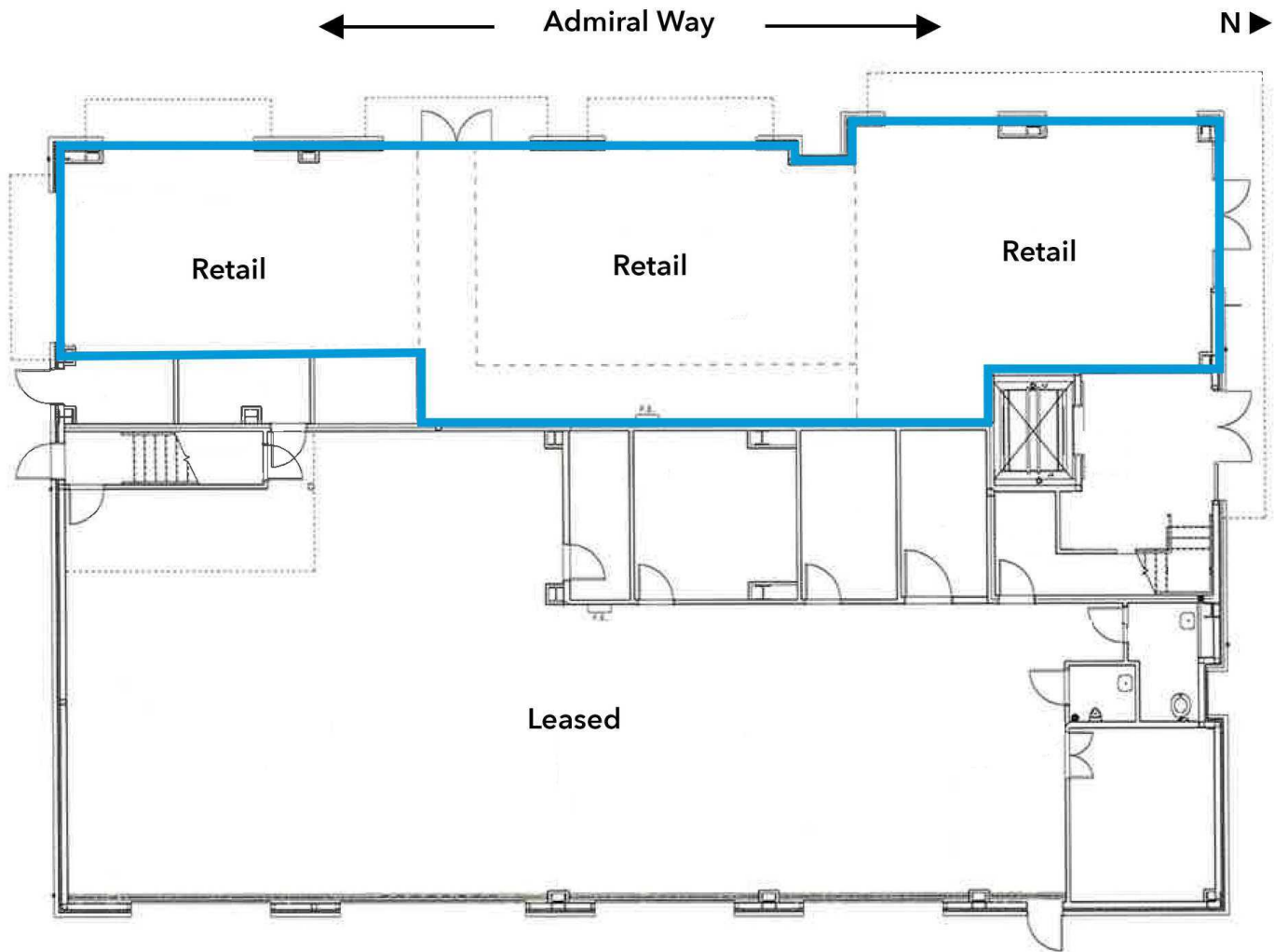
**Zane Shiras, SIOR, CCIM**

zshiras@lee-associates.com

206.773.2676

We obtained the information above from sources we believe to be reliable. However, we have not verified its accuracy and make no guarantee, warranty or representation about it. It is submitted subject to the possibility of errors, omissions, change of price, rental or other conditions, prior sale, lease or financing, or withdrawal without notice. We include projections, opinions, assumptions or estimates for example only, and they may not represent current or future performance of the property. You and your tax and legal advisors should conduct your own investigation of the property and transaction.

**FLOOR PLAN**



**CONTACT**

**Scott Eshelman**

seshelman@lee-associates.com  
206.773.2685

**Zane Shiras, SIOR, CCIM**

zshiras@lee-associates.com  
206.773.2676

We obtained the information above from sources we believe to be reliable. However, we have not verified its accuracy and make no guarantee, warranty or representation about it. It is submitted subject to the possibility of errors, omissions, change of price, rental or other conditions, prior sale, lease or financing, or withdrawal without notice. We include projections, opinions, assumptions or estimates for example only, and they may not represent current or future performance of the property. You and your tax and legal advisors should conduct your own investigation of the property and transaction.

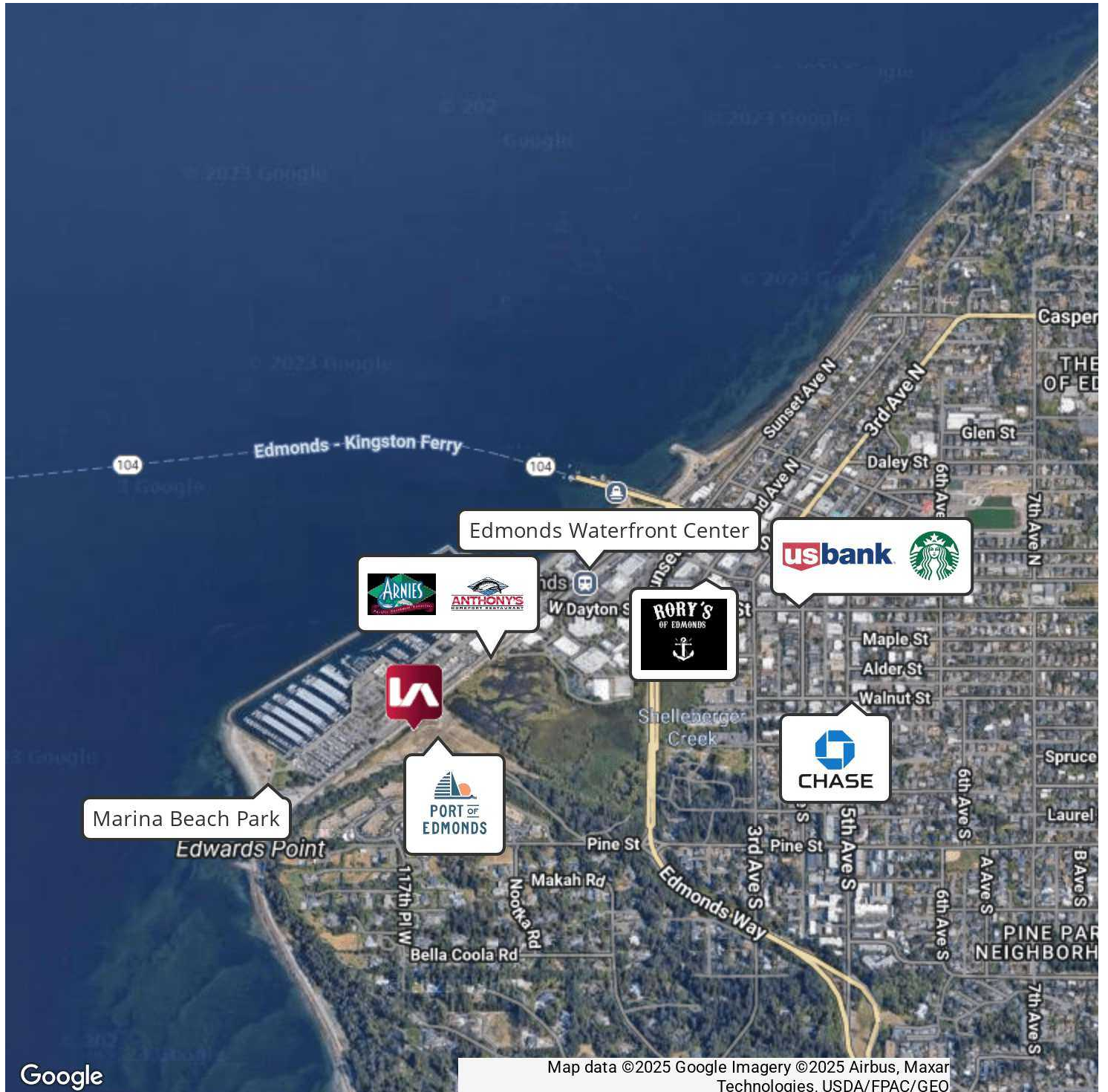


# PORT OF EDMONDS ADMINISTRATION BUILDING

471 Admiral Way, Edmonds, WA 98020



COMMERCIAL REAL ESTATE SERVICES



## CONTACT

**Scott Eshelman**

seshelman@lee-associates.com

206.773.2685

**Zane Shiras, SIOR, CCIM**

zshiras@lee-associates.com

206.773.2676

We obtained the information above from sources we believe to be reliable. However, we have not verified its accuracy and make no guarantee, warranty or representation about it. It is submitted subject to the possibility of errors, omissions, change of price, rental or other conditions, prior sale, lease or financing, or withdrawal without notice. We include projections, opinions, assumptions or estimates for example only, and they may not represent current or future performance of the property. You and your tax and legal advisors should conduct your own investigation of the property and transaction.