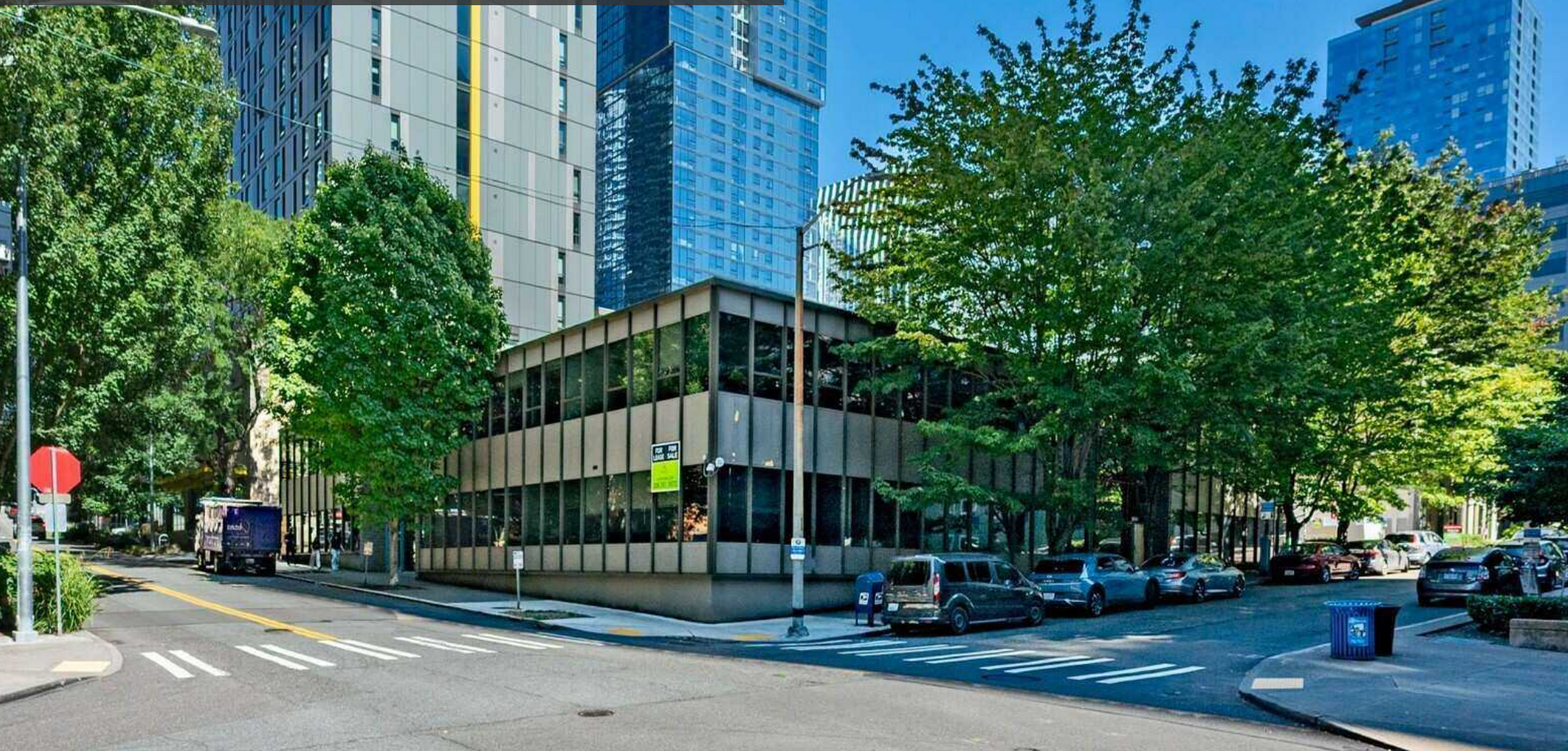


OFFICE FOR LEASE SOUTH LAKE UNION

901 Lenora St, Seattle, WA 98121

AVAILABLE FOR
SALE OR LEASE



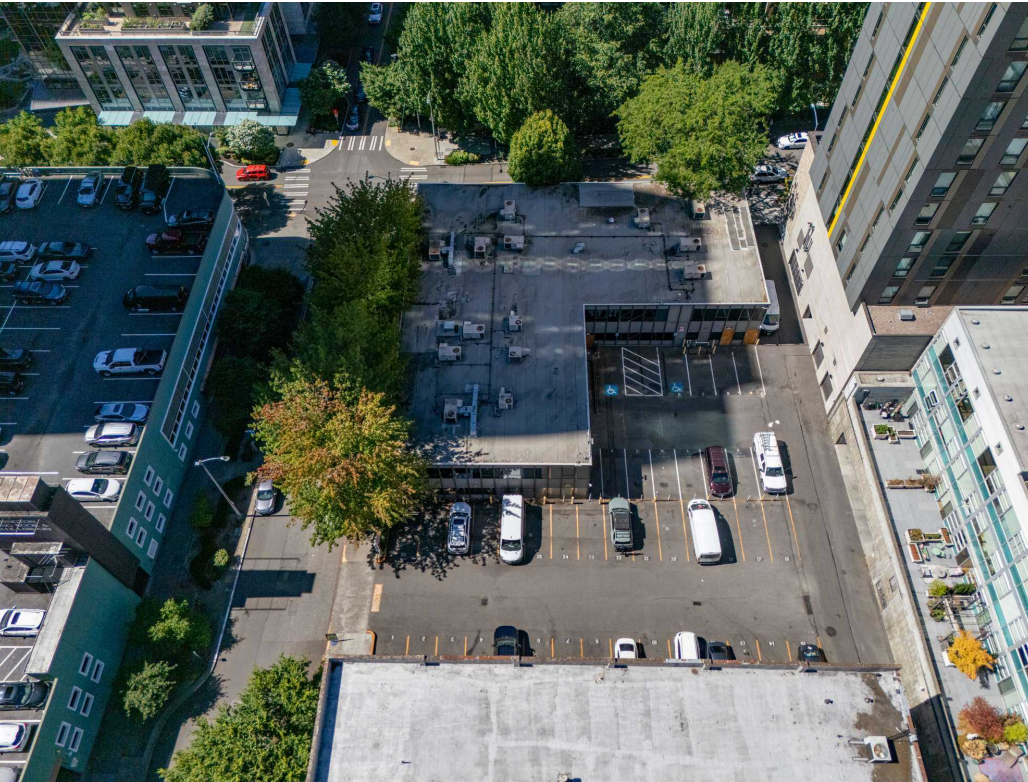
For more information please contact:

LAURA MILLER
laura@gibraltarus.com
206.351.3573



901 LENORA ST, SEATTLE, WA 98121

901 LENORA



PROPERTY HIGHLIGHTS

- 901 Lenora offers a premier location, full building lease opportunity at the epicenter of South Lake Union, steps from 1 Hotel, Whole Foods Market, and Amazon Headquarters
- Strategic positioning amidst major employers, tech giants, and a diverse mix of businesses
- Top-tier walkability and excellent access to transit, boasting a perfect WALK and TRANSIT score of 100. Within steps of Streetcar line and Link Light Rail
- Nearby South Lake Union Waterfront and vibrant restaurants and entertainment
- Parking lot with 42 surface stalls (1.64/1,000 SF)
- Available Space: 21,600 SF (entire 1st and 2nd floors), each floor approx. 10,800 SF
- Elevator
- Ideal for school, childcare, or office user
- Rental Rate \$28/SF/modified gross. Tenant pays utilities.

1st Floor



2nd Floor



901 LENORA ST, SEATTLE, WA 98121

901 LENORA



100

TRANSIT SCORE



100

WALK SCORE



78

BIKE SCORE

901 LENORA ST, SEATTLE, WA 98121

901 LENORA

