



FOR LEASE

VIDEO LINK



PREMIER OFFICE SPACE AVAILABLE AT THE HISTORIC FLOUR MILL

621 W Mallon Avenue, Suite 200 | Spokane WA 99201

BRANDON PETERSON, Broker
509.755.7541
brandonp@kiemleahagood.com

BRYAN DUNCAN, Property Manager
509.755.7584
bryan.duncan@kiemleahagood.com

**KIEMLE
HAGOOD**

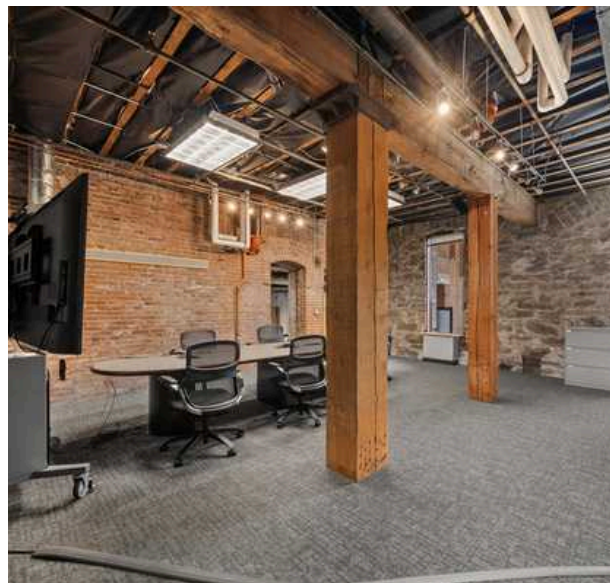
PROPERTY DESCRIPTION

Discover a rare opportunity to lease $\pm 5,930$ sq. ft. of premium office space at the iconic Historic Flour Mill, located on Spokane's scenic North Bank. This beautifully finished space offers a unique blend of historic charm and modern sophistication, with breathtaking views of the Spokane River just outside your windows.

Property Highlights:

- 11 private offices with natural light and flexible layouts
- Two spacious conference rooms:
- Large conference room: ± 600 sq. ft.
- Second conference room: ± 391 sq. ft.
- Open area ideal for cubicles or collaborative workstations
- Break room with full kitchen and modern finishes
- Top-of-the-line interior finishes throughout
- Located directly on the Centennial Trail, offering easy access to scenic riverfront recreation
- Steps from Clinkerdagger's Restaurant, Spokane Arena, and downtown Spokane
- On site parking available for staff and clients
- Position your business in a setting that reflects both prestige and functionality. The Historic Flour Mill offers an unmatched work environment surrounded by culture, dining, events, and the vibrant Spokane riverfront.

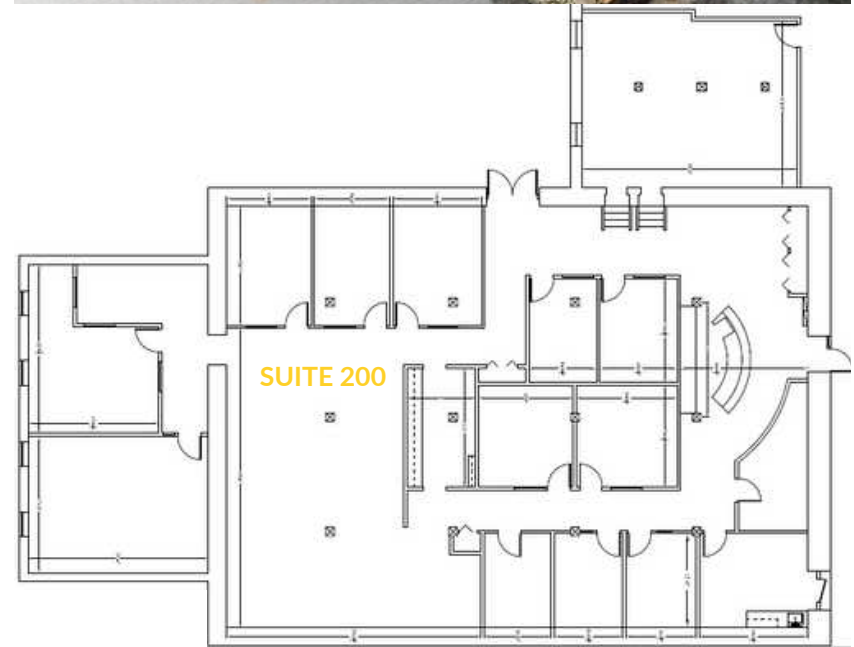
****Incentives available! Call listing broker today!****



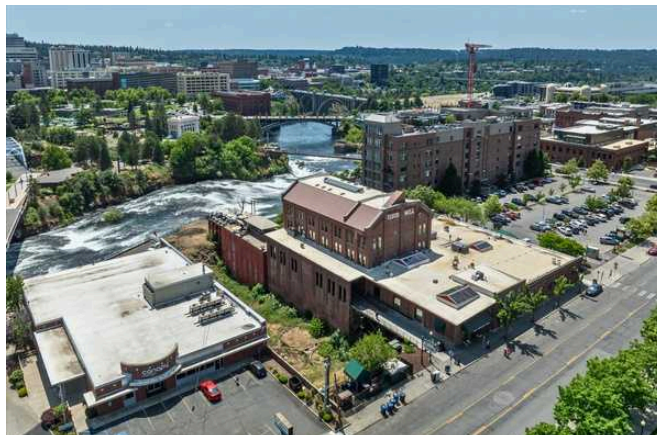
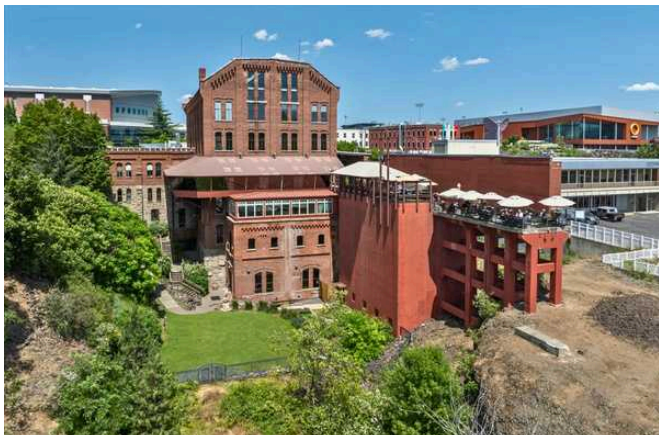
INTERIOR PHOTOS



SUITE NO.	Suite #200
LEASE RATE	\$18.00 PSF/YR
LEASE TYPE	Modified Gross
SUITE SIZE	±5,930 SF
PARCEL	35185.4922
BUILDING SIZE	±74,219 SF
LOT SIZE	±95,757 SF
YEAR BUILT	1896
ZONING	DTG - Downtown General
PARKING	8 Spaces currently reserved through CarPark at \$100 /Month per space



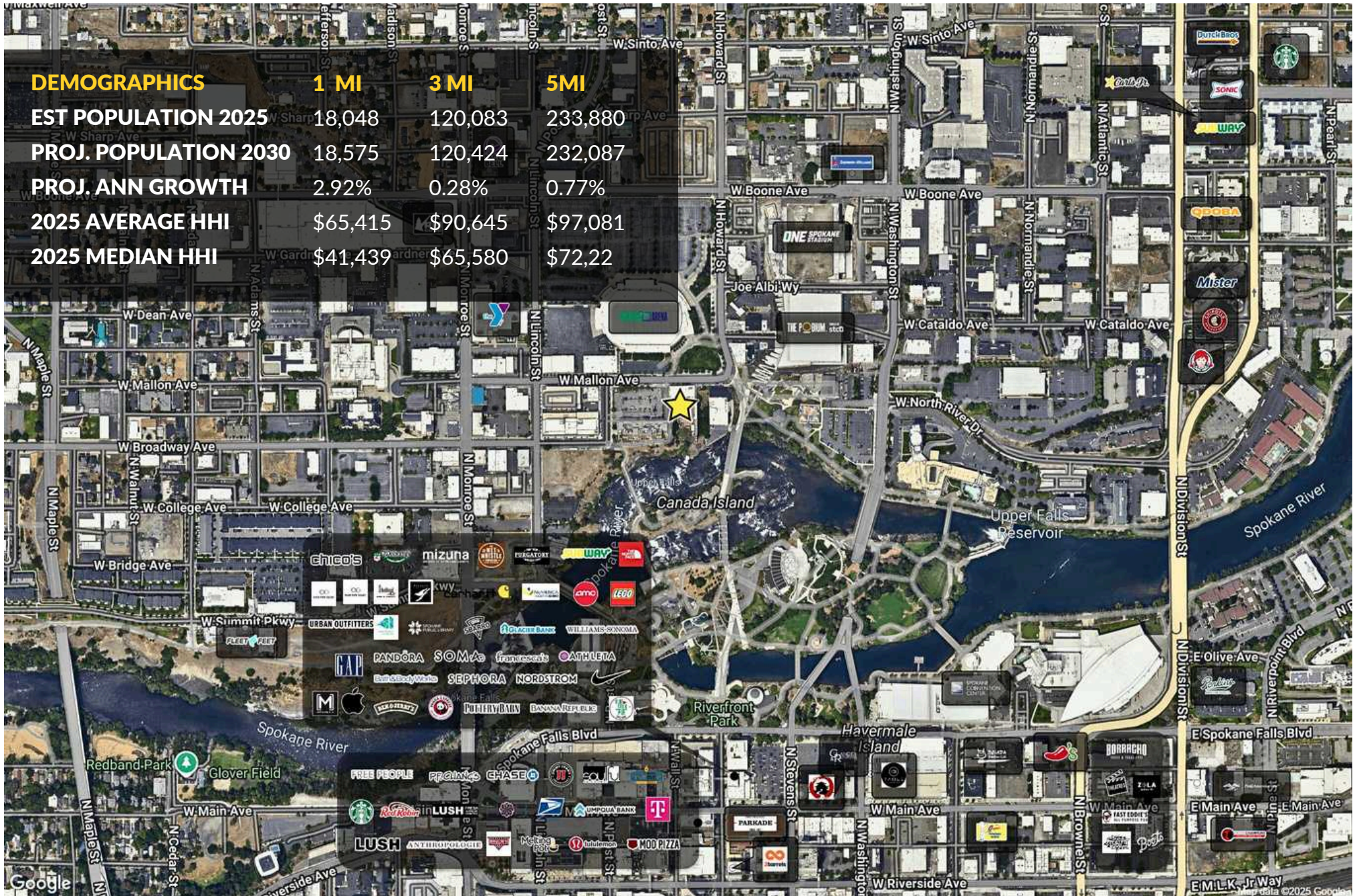
EXTERIOR PHOTOS



SURROUNDING AREA / DEMOGRAPHICS

DEMOGRAPHICS

	1 MI	3 MI	5 MI
EST POPULATION 2025	18,048	120,083	233,880
PROJ. POPULATION 2030	18,575	120,424	232,087
PROJ. ANN GROWTH	2.92%	0.28%	0.77%
2025 AVERAGE HHI	\$65,415	\$90,645	\$97,081
2025 MEDIAN HHI	\$41,439	\$65,580	\$72,22



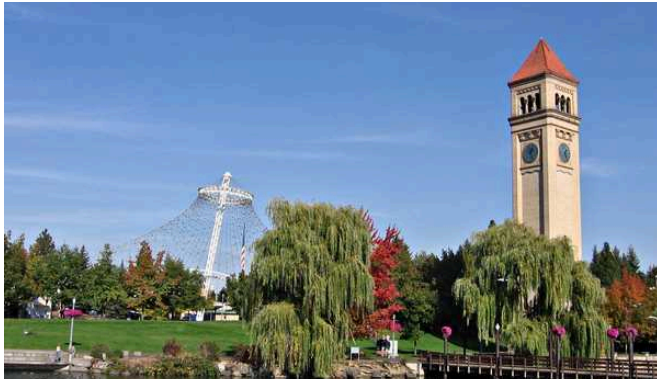
HISTORY OF THE FLOUR MILL

The Flour Mill is a physical reminder of the centrality of water power in Spokane's history; nearly all of the early development of the city was directly related to the majestic falls of the Spokane River. The Spokane Flour Mill, built in 1895, was one in a series of mills built along the falls prior to 1900. It did not come into operation, however, until 1900 because the property became mired in a complex international lawsuit that was one of the most explosive and longest-fought battles in the city's legal history. The mill was adaptively renovated as a shopping center in conjunction with preparations for the World's Fair that Spokane hosted in 1974. Shoppers and diners at the Flour Mill now enjoy a view of Riverfront Park, the legacy of Expo '74 and the centerpiece of the city. The Flour Mill stands as a unique reminder that Spokane's history and wealth began in the power of the falls and endured through the bounty of the surrounding countryside.

— Spokane City | County Historic Preservation Office

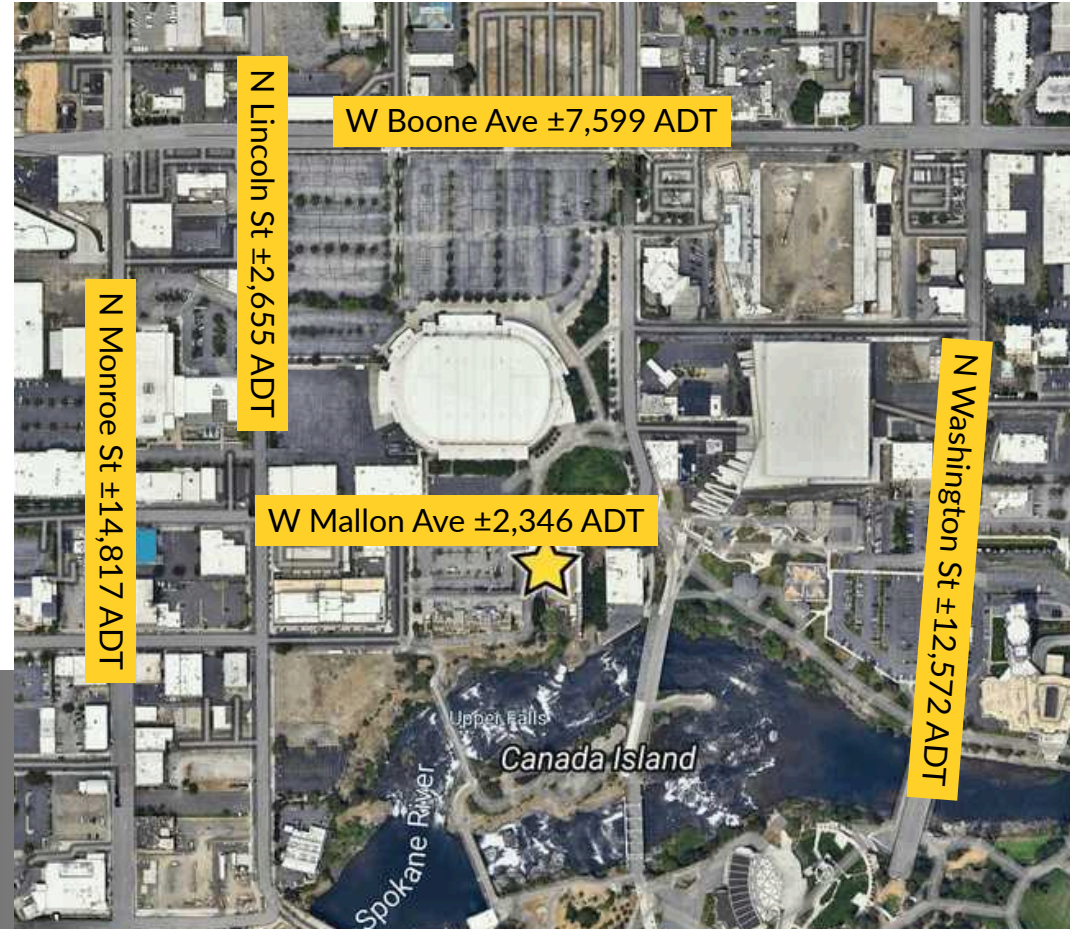


SPOKANE HISTORY / AREA



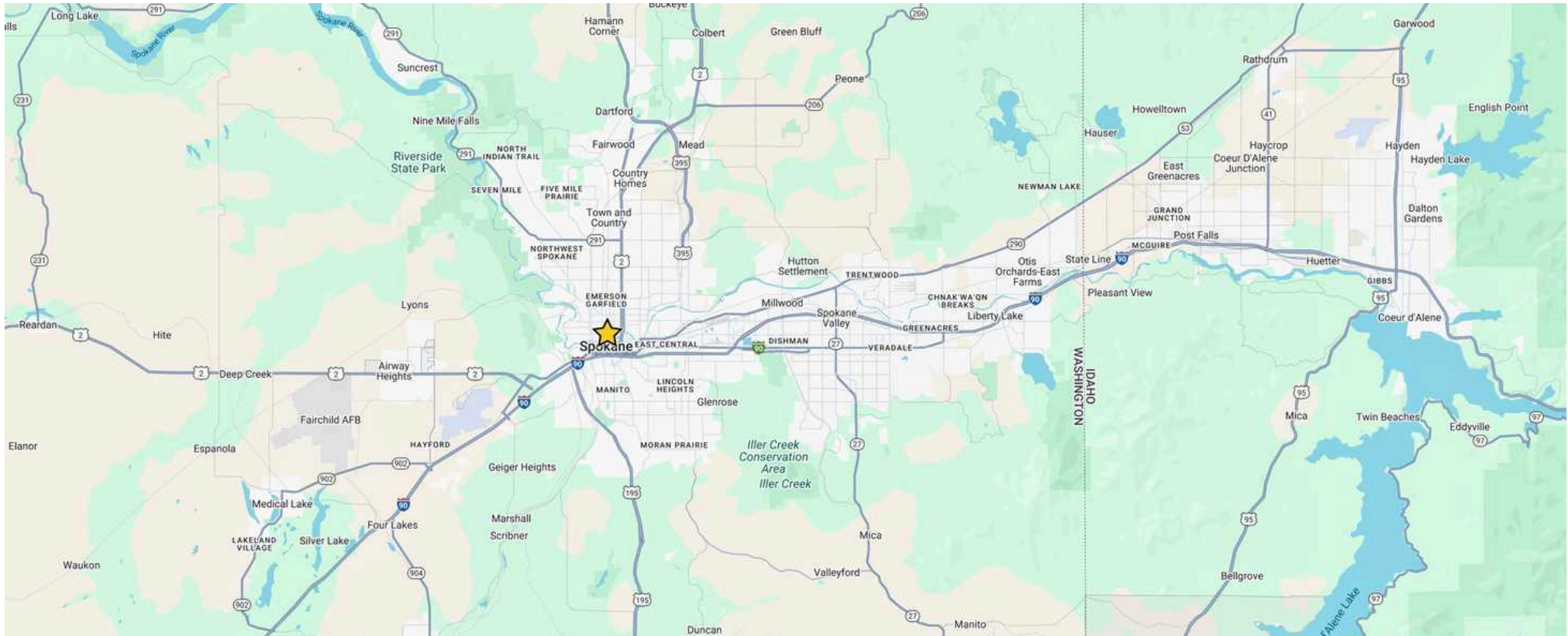
Spokane's history is deeply rooted in its location at the Spokane River Falls and the arrival of the Northern Pacific Railroad, which transformed the area into a regional hub for mining, timber, and agriculture. The city's growth was further fueled by the nearby Coeur d'Alene mining district and the Grand Coulee Dam project. Spokane's history also includes the presence of the Spokane Tribe, its hosting of Expo '74, and its role as a gateway to the Inland Northwest.

DISTANCE & DRIVE TIMES



Distance and Drive Time

Spokane International Airport (East)	±7 Miles, ±12 Minutes
Spokane Valley, WA (East)	±10 Miles, ±16 Minutes
Post Falls, ID (East)	±26 Miles, ±30 Minutes
Coeur d'Alene, ID (East)	±34 Miles, ±42 Minutes
Seattle, WA (West)	±279 Miles, ±4 Hour, 13 Minutes
Newport, WA (North)	±49 Miles, ±1 Hour
Pullman, WA (South)	±75 Miles, ±1 Hour, 23 Minutes



FLOUR MILL

621 W Mallon Avenue, Suite 200 | Spokane WA 99201

[VIDEO LINK](#)



[VIEW LOCATION](#)



BRANDON PETERSON, Broker
509.755.7541
brandonp@kiemlehangood.com

BRYAN DUNCAN, Property Manager
509.755.7584
bryan.duncan@kiemlehangood.com

No warranty or representation, expressed or implied, is made by Kiemle Hagood, its agents or its employees as to the accuracy of the information contained herein. All information furnished is from sources deemed reliable and submitted subject to errors, omissions, change of terms and conditions, prior sale, lease or financing, or withdrawal without notice. No one should rely solely on the above information, but instead should conduct their own investigation to independently satisfy themselves. Kiemle Hagood respects the intellectual property of others: If you believe the copyright in your work has been violated through this Website, please contact our office for notice of claims of copyright infringement. For your complaint to be valid under the Digital Millennium Copyright Act of 1998 (DMCA), you must provide the following information when providing notice of the claimed copyright infringement: Identify the material on the Website that you believe infringes your work, with enough detail so that we may locate it on the Website; provide your address, telephone number and email address; provide a statement that you have a good faith belief that the disputed use is not authorized by the copyright owner, its agent, or the law; provide a statement that the information in the notification is accurate, and under penalty of perjury, that the complaining party is authorized to act on behalf of the owner of an exclusive right that is allegedly infringed; and provide your physical or electronic signature. Upon receiving your complaint, Kiemle Hagood will, upon review, remove content that you believe infringes your copyright if the complaint is found to be valid.

OFFICE LOCATIONS

SPOKANE | COEUR D'ALENE | TRI-CITIES | MISSOULA

601 W Main Avenue, Suite 400
Spokane, WA 99201