

RETAIL LEASE LOCATION

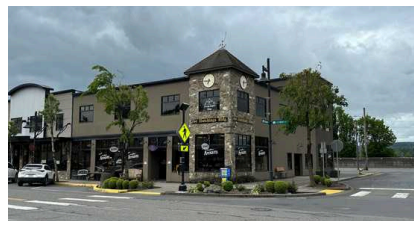
299 N 1ST STREET
KALAMA, WA 98625

PER
MONTH

\$2,000
Plus Utilities

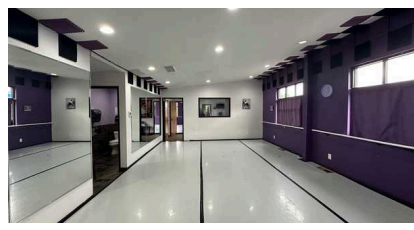
SPACE
SIZE

SF 2,500



ABOUT THE PROPERTY

Multi-level office/retail in one of the classiest buildings in the highly visible and desired downtown Kalama now available. This space features 2,500 SF spread over multiple levels with 4-6 good sized offices, an open reception/waiting area, two restrooms, and a large workspace that can be converted into a conference room and has multiple entrances. Located adjacent to I5, this building boasts excellent exposure, good signage, plenty of parking, and is close to all that Kalama has to offer. Asking \$2,000 per month plus utilities. Call today for your private tour.



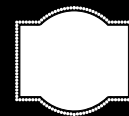
PROPERTY DETAIL



CLOSE TO
INTERSTATE 5



AMPLE
PARKING



EXCELLENT
SIGNAGE



PARCEL
40099



woodfordcre.com



chris@woodfordcre.com

GET IN TOUCH

Chris Roewe
Owner/Broker

Lindsay Johnson
Licensed Assistant

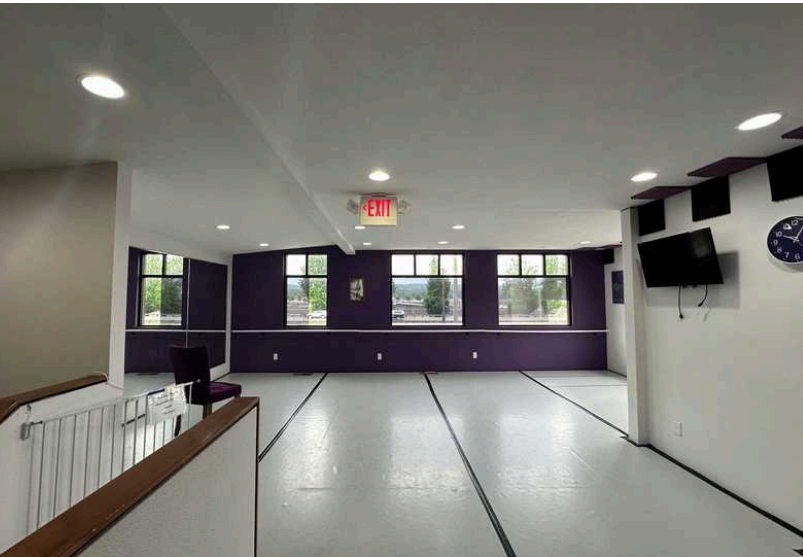
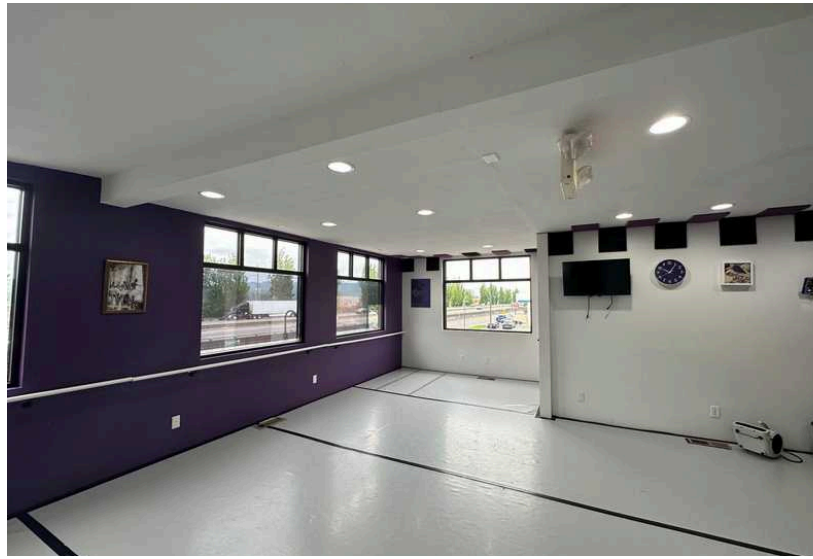
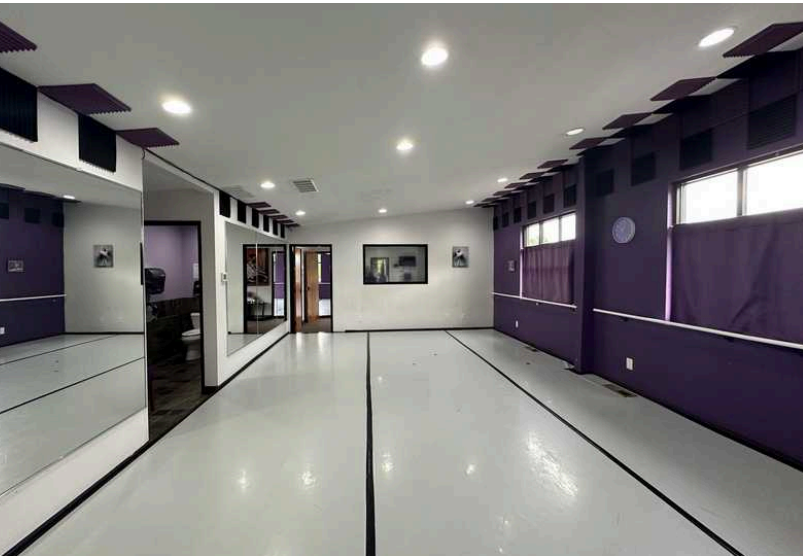


(360) 501-5500



lindsay@woodfordcre.com

RETAIL FOR LEASE



The information contained herein has been obtained from sources we understand to be reliable. Whilst we do not doubt its accuracy it has not been verified & we make no guarantees, warranty, or representations about it. Any projections, opinions, assumptions or estimates used are for example only. You & your advisors should conduct a careful independent investigation of the property to determine the property's satisfaction to your needs. © Woodford Commercial Real Estate.

