



CLARION PARTNERS

For Lease

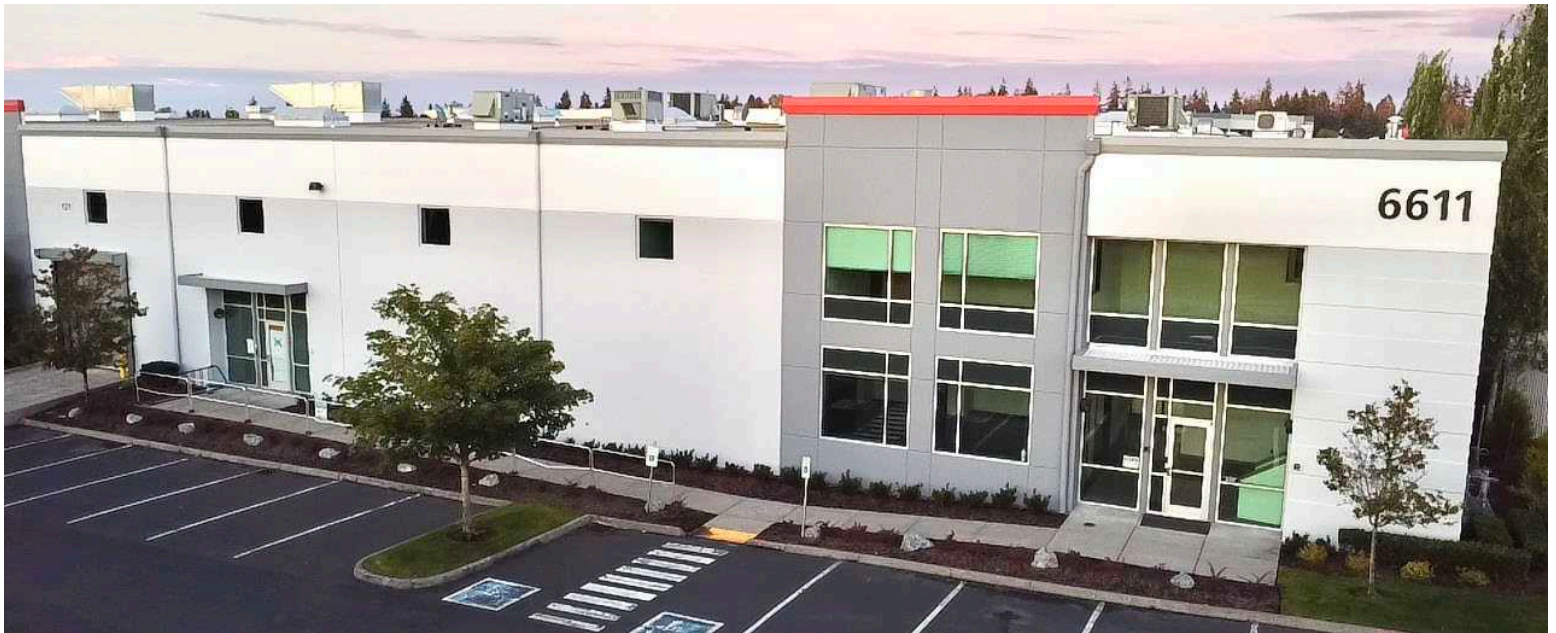
Exclusively listed by:



Everett Commerce Center – Building A

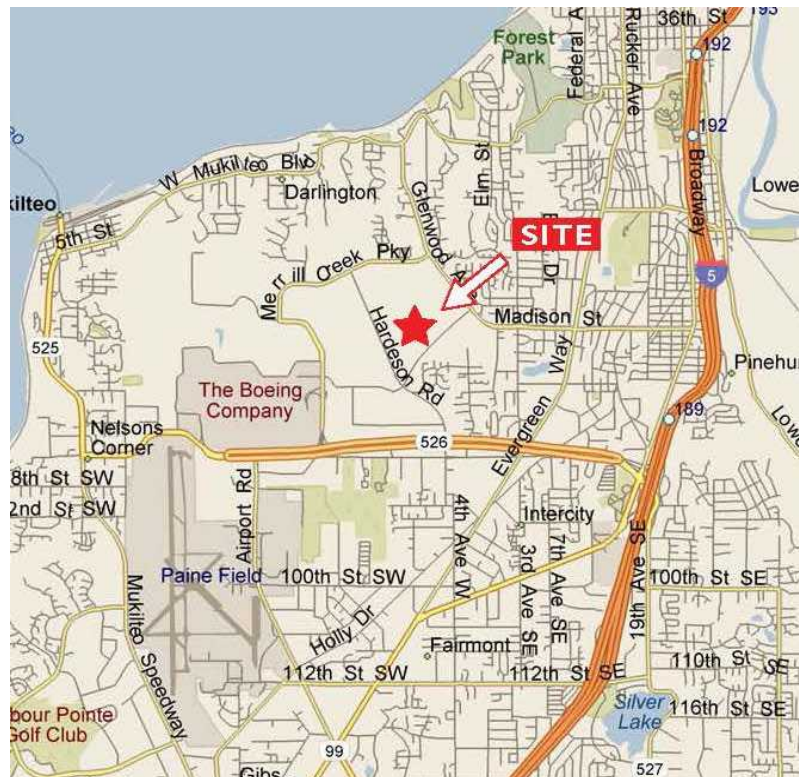
6611 Associated Blvd.  
Everett, WA 98203z

## New Market Ready Improvements to the Office & Warehouse Areas



### BUILDING HIGHLIGHTS

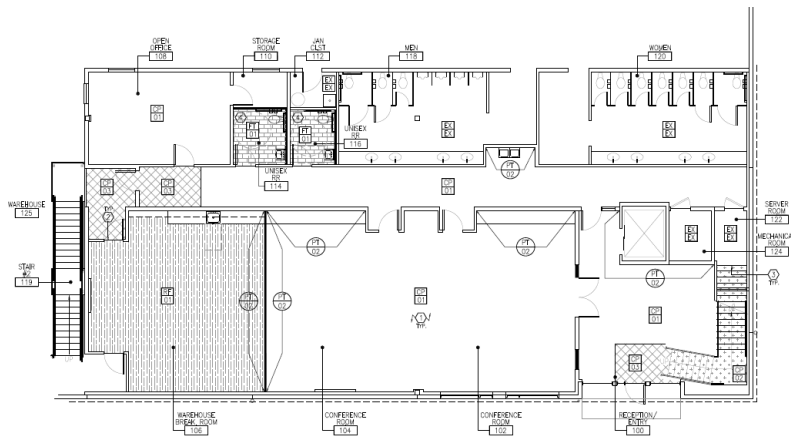
- 91,544 SF total
  - 9,760 SF office / 81,784 SF warehouse
- See page 2 for Virtual Tours of office space
- 24' clear height
- Sprinklered
- 17 dock high doors
- 7 grade-level doors (4 in back, 3 in front)
- 480 volts/1200 amps 3 phase service
- Fully temperature-controlled warehouse area
- 47' x 50' typical column spacing
- 1.67 parking stalls per 1,000 SF
- Available immediately
- Contact brokers for rates





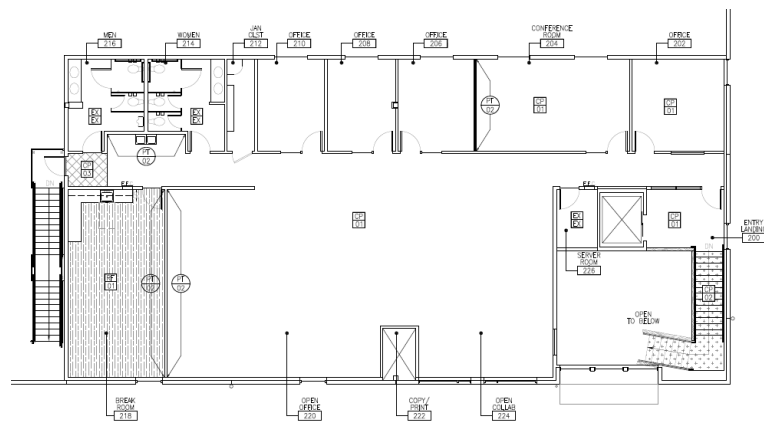
# CLARION PARTNERS

## Everett Commerce Center – Building A



First Floor Office

[View Virtual Tour](#)



Second Floor Office

[View Virtual Tour](#)





# CLARION PARTNERS

## Everett Commerce Center – Building A



This information contained herein was obtained from sources deemed reliable and is believed to be true. It has not been verified and as such, cannot be warranted nor form any part of any future contract





# CLARION PARTNERS

## Everett Commerce Center – Building A



### PROPERTY HIGHLIGHTS

- Located in the popular Seaway Business Center next to Boeing's Everett facility
- Convenient access to SR 526, I-5, and many nearby amenities
- Business friendly City of Everett
- Within 10 minutes of Paine Field Airport
- Corporate neighbors include Boeing, Amazon, Seattle Genetics, Helion, Food Services of America, Aviation Technical Services and Fluke

Derek Heed  
425.453.3133  
derek.heed@colliers.com

Gregg Riva  
206.595.1525  
gregg.riva@colliers.com

Talor Okada  
425.492.5145  
talor.okada@colliers.com

