

# TOK

COMMERCIAL

## 275 INDUSTRIAL PARK

OFFICE & WAREHOUSE FOR LEASE | SPIRIT LAKE, ID 83869

CONTACT

**DANNY DAVIS, CCIM**

208.691.6003

danny@tokcommercial.com

HIGHLIGHTS

2 acres of industrial land fenced and secured yard.  
Partially paved.

Free span steel construction.

400 amps of power. 3 phase nearby.

Heavily insulated plus radiant floor heating.

Kitchen, breakroom, bathroom, and office included.

6" reinforced concrete slab.

DETAILS

**RATE REDUCED!**

AVAILABLE	SIZE	RATE
Building	9,600 SF	\$9.60/SF/yr. NNN
DEMISED OPTIONS	SIZE	RATE
Suite A	4,800 SF	\$9.60/SF/yr. NNN
Suite B	4,800 SF	\$9.60/SF/yr. NNN

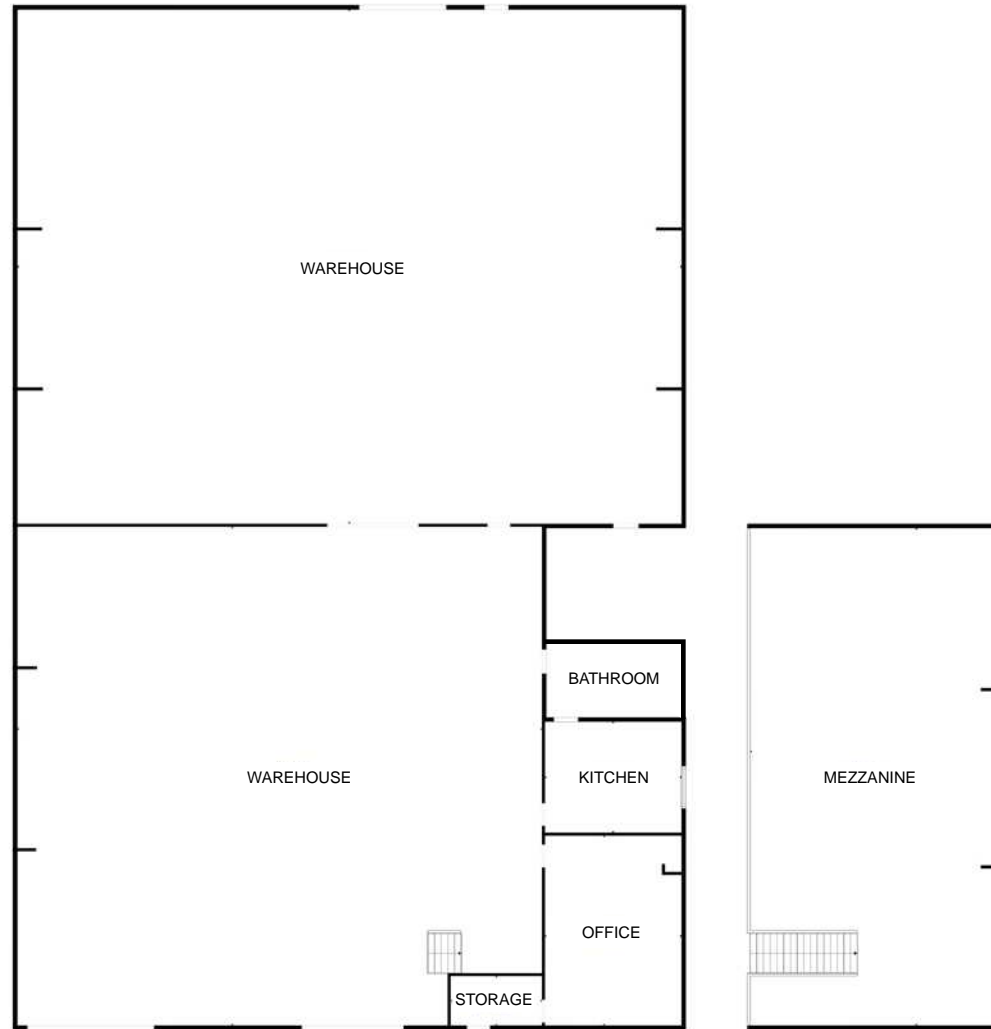
<b>LOT SIZE:</b>	2 Acres	<b>GRADE DOORS:</b>	3
<b>BLDG SIZE:</b>	9,600 SF	<b>ZONING:</b>	Industrial
<b>YEAR BUILT:</b>	2021	<b>LEASE TYPE:</b>	NNN
<b>POWER:</b>	400 amps	<b>AVAILABLE:</b>	Immediately

# FLOOR PLANS

**RATE REDUCED!**



AVAILABLE	SIZE	RATE
Building	9,600 SF	<b>\$9.60/SF/yr. NNN</b>
DEMISED OPTIONS	SIZE	RATE
Suite A	4,800 SF	<b>\$9.60/SF/yr. NNN</b>
Suite B	4,800 SF	<b>\$9.60/SF/yr. NNN</b>



**275 INDUSTRIAL PARK**

UPDATED: 9.5.2025

THIS PROPERTY IS EXCLUSIVELY MARKETING BY TOK INLAND NORTHWEST LLC DBA TOK COMMERCIAL. This information was obtained from sources believed reliable but cannot be guaranteed. Any opinions or estimates are used for example only.

**TOK**COMMERCIAL.COM





## 275 INDUSTRIAL PARK

UPDATED: 9.5.2025

THIS PROPERTY IS EXCLUSIVELY MARKETING BY TOK INLAND NORTHWEST LLC DBA TOK COMMERCIAL This information was obtained from sources believed reliable but cannot be guaranteed. Any opinions or estimates are used for example only.

**TOK**COMMERCIAL.COM





**OFFICE**



**KITCHEN**



## 275 INDUSTRIAL PARK

UPDATED: 9.5.2025

THIS PROPERTY IS EXCLUSIVELY MARKETING BY TOK INLAND NORTHWEST LLC DBA TOK COMMERCIAL. This information was obtained from sources believed reliable but cannot be guaranteed. Any opinions or estimates are used for example only.

**TOK**COMMERCIAL.COM





## 275 INDUSTRIAL PARK

UPDATED: 9.5.2025

THIS PROPERTY IS EXCLUSIVELY MARKETING BY TOK INLAND NORTHWEST LLC DBA TOK COMMERCIAL. This information was obtained from sources believed reliable but cannot be guaranteed. Any opinions or estimates are used for example only.

**TOK**COMMERCIAL.COM



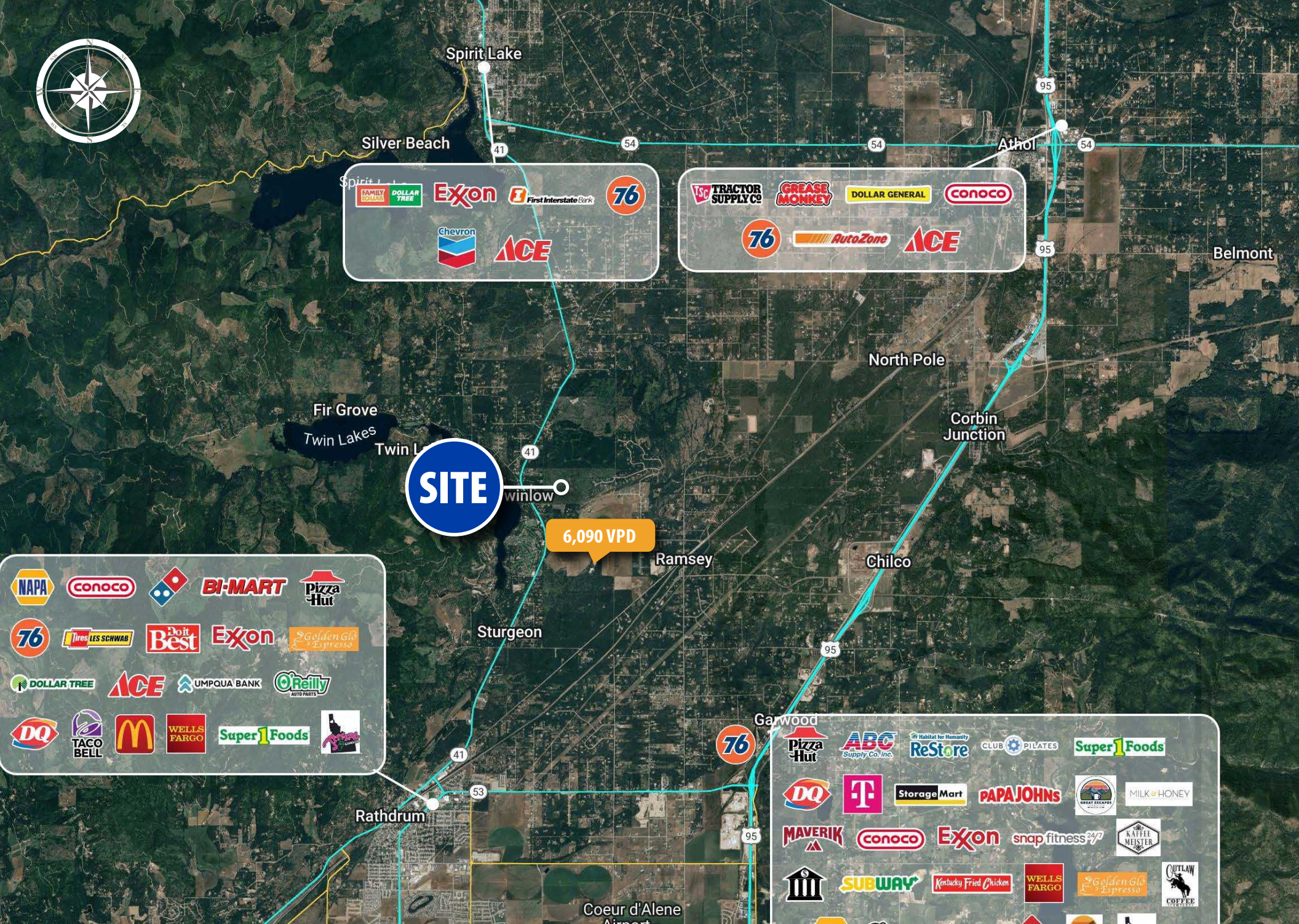


## — AREA DEMOGRAPHIC SUMMARY —

POPULATION	HOUSEHOLDS	AVG. HOUSEHOLD INC.	EMPLOYEES
3 MI   4,118	3 MI   1,569	3 MI   \$91,202	3 MI   3,362
5 MI   6,932	5 MI   2,621	5 MI   \$96,528	5 MI   5,659
10 MI   17,824	10 MI   6,873	10 MI   \$110,946	10 MI   14,566

### 275 INDUSTRIAL PARK





275 INDUSTRIAL PARK



# AERIAL MAP



**275 INDUSTRIAL PARK**

UPDATED: 9.5.2025

THIS PROPERTY IS EXCLUSIVELY MARKETING BY TOK INLAND NORTHWEST LLC DBA TOK COMMERCIAL. This information was obtained from sources believed reliable but cannot be guaranteed. Any opinions or estimates are used for example only.

**TOK**COMMERCIAL.COM