

791-1,866 SF RETAIL

THE LINE

132 NE 145TH STREET, SHORELINE, WA 98155

NEW RATE:  
\$28.00/SF/NNN



FOR MORE INFORMATION PLEASE CONTACT:

**LAURA MILLER**

[laura@gibraltarusa.com](mailto:laura@gibraltarusa.com)  
206.351.3573

**TRACY CORNELL**

[tracyc@gibraltarusa.com](mailto:tracyc@gibraltarusa.com)  
206.948.0630





## HIGHLIGHTS

[WWW.LIVEATTHELINE.COM](http://WWW.LIVEATTHELINE.COM)

Position your business at the center of growth and opportunity in Shoreline's fastest-developing corridor. The LINE is a striking, seven-story mixed-use development featuring 241 luxury apartment residences and 791-1,866 SF of highly visible ground-floor retail space, now leasing.

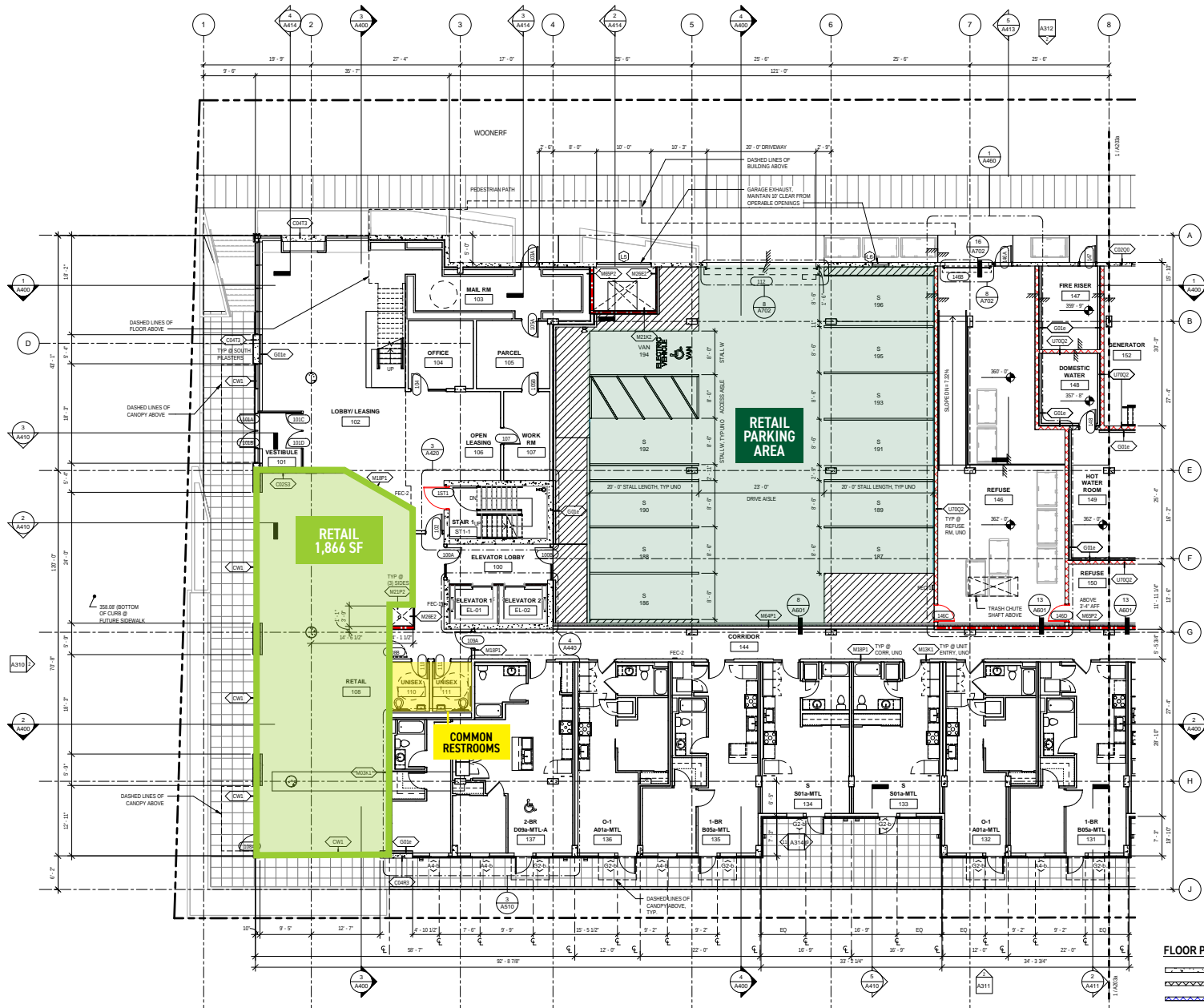
Located directly across from Lakeside School and just steps from the 148th Street Light Rail Station, this premier location offers built-in foot traffic from residents, students, commuters, and an expanding upscale neighborhood.

Be part of a vibrant, transit-oriented community that connects directly to Seattle and the region's growing customer base. With sleek architecture, constant visibility, and a highly desirable demographic, The LINE offers retail tenants the ideal blend of exposure, energy, and long-term potential.

Available now.



N 145TH STREET



INTERSTATE 5

## AVAILABILITY

### RSF

791-1,866 SF

### LEASE RATE

\$28.00/SF/NNN

### 2025 NNN

\$6.50/SF

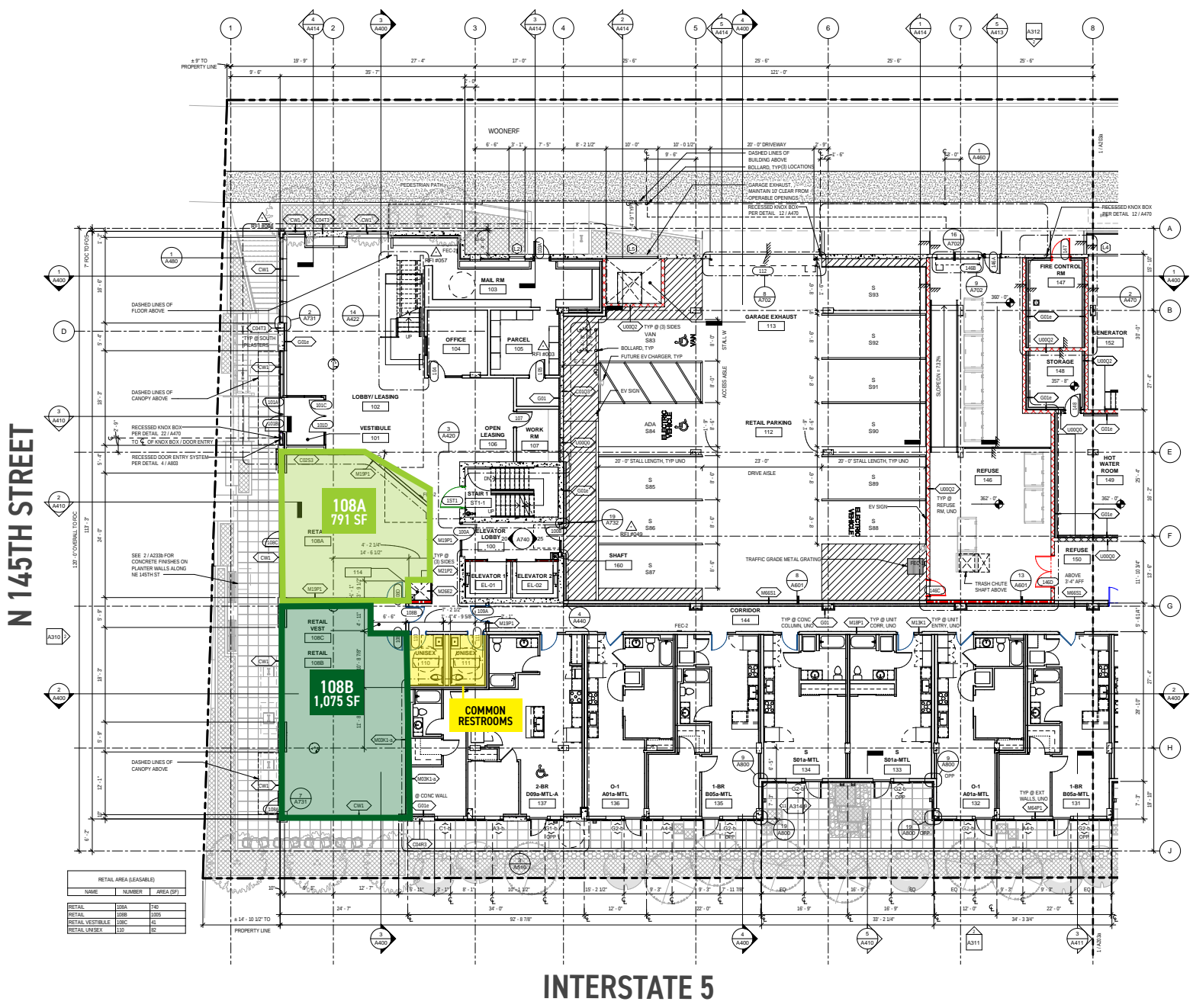
## DESCRIPTION

Expansive floor to ceiling storefront windows, 20' ceilings, high visibility space fronting 145th Street, type 2 hood capability, grease trap, dedicated outdoor patio, 6 retail garage parking stalls.

FLOOR PLAN

C  
N  
1





## DEMOGRAPHICS

TOTAL POPULATION	84,500
HOUSEHOLDS	37,045
AVERAGE HH INCOME	\$114,695

A map of the Shoreline Light Rail Line, showing the route from Shoreline North to Jackson Park Golf Course. The map includes labels for various streets and landmarks. Key locations marked with green dots and lines pointing to them are:

- SHORELINE NORTH/185<sup>TH</sup> STREET LIGHT RAIL STATION
- SHORELINE SOUTH/148<sup>TH</sup> STREET LIGHT RAIL STATION
- LAKESIDE SCHOOL
- JACKSON PARK GOLF COURSE

The map also shows the following streets and landmarks:

- N 200th St
- ECHO LAKE
- N 185th St
- Shoreline
- NE 175th St
- NE 168th St
- 25th Ave NE
- Lake Forest Park
- NE 178th St
- Bothell
- RONALD
- BIDGECREST
- th St
- BRIARCREST
- 5th Ave NE
- 30th Ave NE
- 40th Pl NE
- 522
- 523
- 15th Ave
- 1st Ave N
- N 145th St
- MINSTER TRIANGLE
- HALLER LAKE
- OLYMPIC HILLS
- CEDAR PARK
- LAKE CITY
- PINEHURST
- ITTER LAKE

**FOR MORE INFORMATION PLEASE CONTACT:**

**LAURA MILLER**

[laura@gibraltarusa.com](mailto:laura@gibraltarusa.com)

206.351.3573

**TRACY CORNELL**

[tracyc@gibraltarusa.com](mailto:tracyc@gibraltarusa.com)

206.948.0630



This information has been obtained from sources believed reliable. No guarantee, warranty or representation, express or implied, is made as to the accuracy of the information contained herein, and same is submitted subject to errors, omissions, change of price, rental or other conditions withdrawal without notice, and to any special listing conditions, imposed by our principals. Any projections, opinions, assumptions or estimates used are for example only and do not represent the current or future performance of the property.