

791-1,866 SF RETAIL

THE LINE

132 NE 145TH STREET, SHORELINE, WA 98155

NEW RATE:
\$28.00/SF/NNN



FOR MORE INFORMATION PLEASE CONTACT:

LAURA MILLER

laura@gibraltarusa.com
206.351.3573

TRACY CORNELL

tracyc@gibraltarusa.com
206.948.0630



HIGHLIGHTS

WWW.LIVEATTHELINE.COM

Position your business at the center of growth and opportunity in Shoreline's fastest-developing corridor. The LINE is a striking, seven-story mixed-use development featuring 241 luxury apartment residences and 791-1,866 SF of highly visible ground-floor retail space, now leasing.

Located directly across from Lakeside School and just steps from the 148th Street Light Rail Station, this premier location offers built-in foot traffic from residents, students, commuters, and an expanding upscale neighborhood.

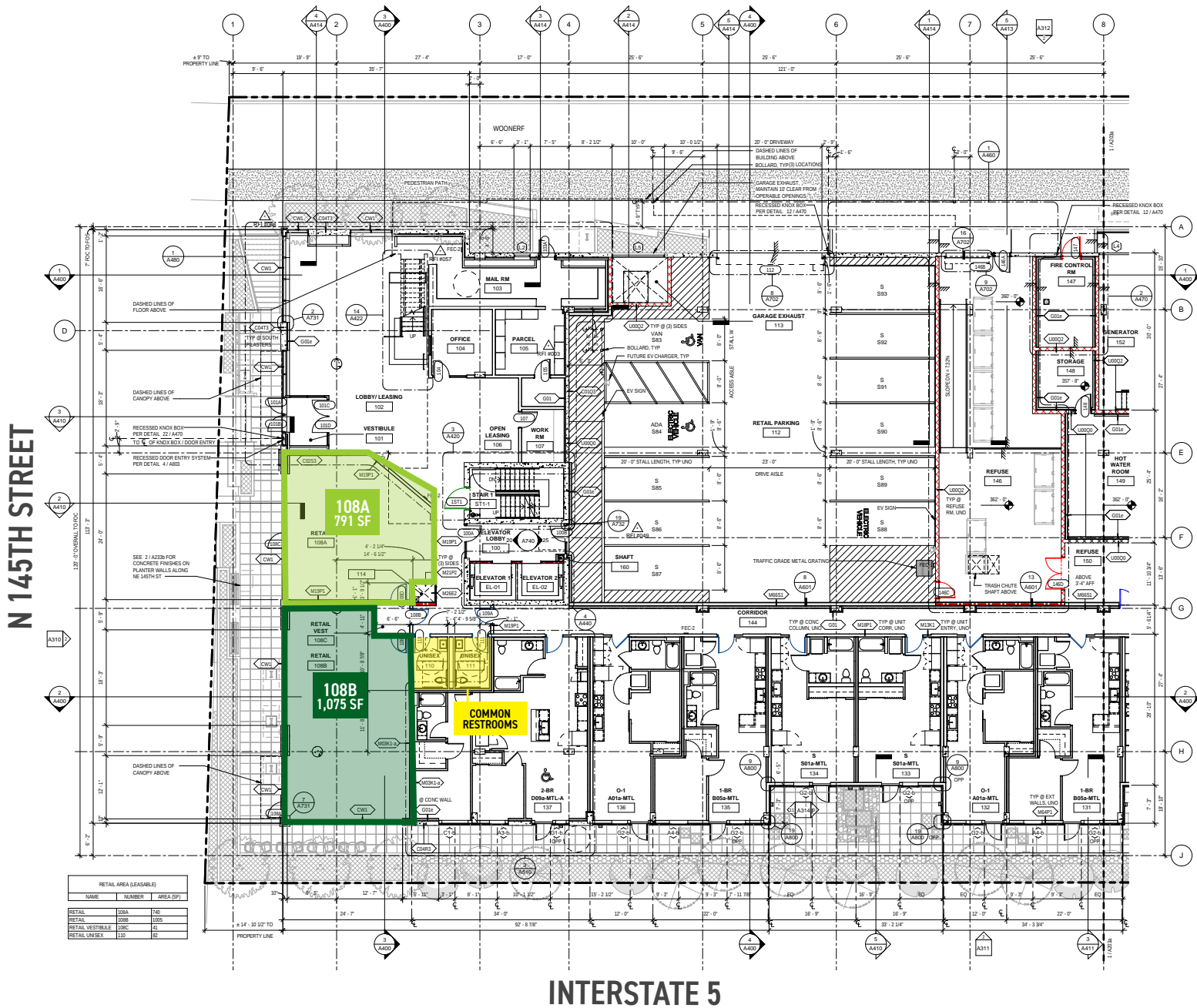
Be part of a vibrant, transit-oriented community that connects directly to Seattle and the region's growing customer base. With sleek architecture, constant visibility, and a highly desirable demographic, The LINE offers retail tenants the ideal blend of exposure, energy, and long-term potential.

Available now.





Expansive floor to ceiling storefront windows, 20' ceilings, high visibility space fronting 145th Street, type 2 hood capability, grease trap, dedicated outdoor patio, 6 retail garage parking stalls.



INTERSTATE 5

DEMOGRAPHICS

TOTAL POPULATION	84,500
HOUSEHOLDS	37,045
AVERAGE HH INCOME	\$114,695

The map displays the proposed light rail line, labeled 'THE LINE', running north-south through Shoreline. Key locations and streets marked include:

- Shoreline North/185th Street Light Rail Station** (indicated by a green dot)
- Shoreline South/148th Street Light Rail Station** (indicated by a green dot)
- Lakeside School** (indicated by a green star)
- Jackson Park Golf Course** (indicated by a green dot)
- Streets:** N 200th St, N 185th St, NE 175th St, NE 168th St, N 145th St, 1st Ave N, 15th Ave, 30th Ave NE, 35th St, 40th Pl NE, 5th Ave NE, 25th Ave NE, Bothell Way.
- Geographic Features:** ECHO LAKE, Lake Forest Park, HALLER LAKE, PINEHURST, OLYMPIC HILLS, CEDAR PARK, LAKE CITY.
- Highways:** I-5, SR 104, SR 523, SR 522.

FOR MORE INFORMATION PLEASE CONTACT:

LAURA MILLER

laura@gibraltarusa.com

206.351.3573

TRACY CORNELL

tracyc@gibraltarusa.com

206.948.0630



This information has been obtained from sources believed reliable. No guarantee, warranty or representation, express or implied, is made as to the accuracy of the information contained herein, and same is submitted subject to errors, omissions, change of price, rental or other conditions withdrawal without notice, and to any special listing conditions, imposed by our principals. Any projections, opinions, assumptions or estimates used are for example only and do not represent the current or future performance of the property.