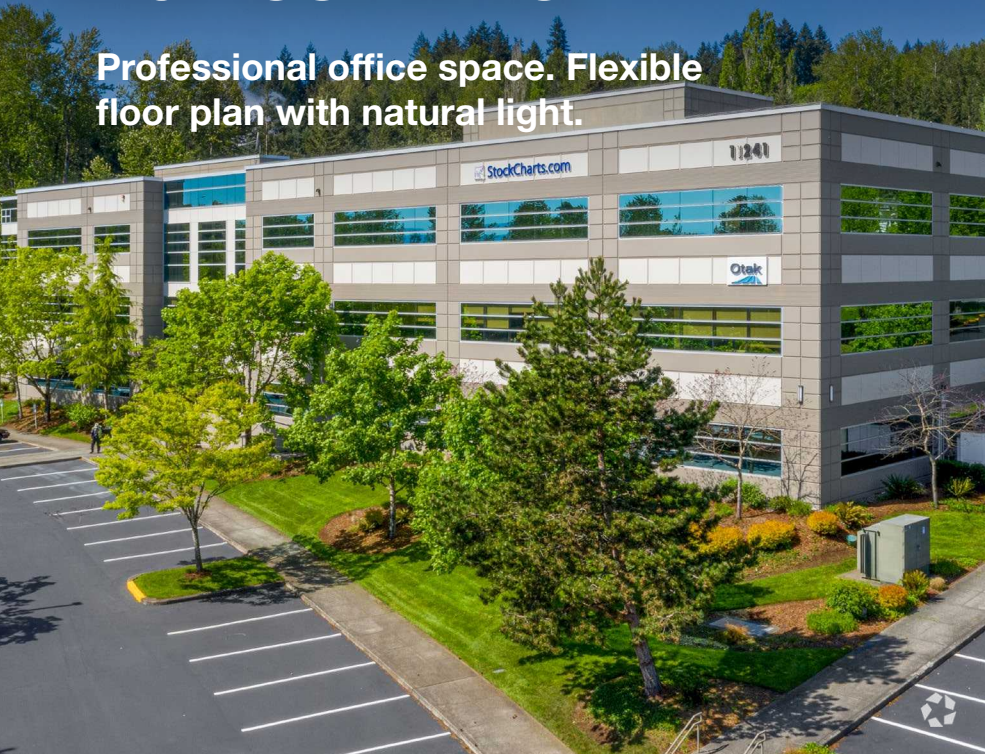


FOR SUBLEASE

Professional office space. Flexible floor plan with natural light.



Quadrant Willows

11241 Willows Rd NE, Redmond, WA

Strategically positioned office space offering exceptional access to major highways, public transit, and the new Redmond–Bellevue light rail line.

PROPERTY HIGHLIGHTS

- + Suite 215 – 3,716 SF
- + Lease Rate: \$23/SF NNN
- + Available immediately
- + Flexible floor plan with furniture available
- + Patio with great Eastern-facing views
- + 3.0 Parking Stalls per 1,000 SF occupied
- + Sublease Exp 12/31/27

ALEX WHEATLEY

Vice President
+1 425 600 4550
awheatley@nai-psp.com

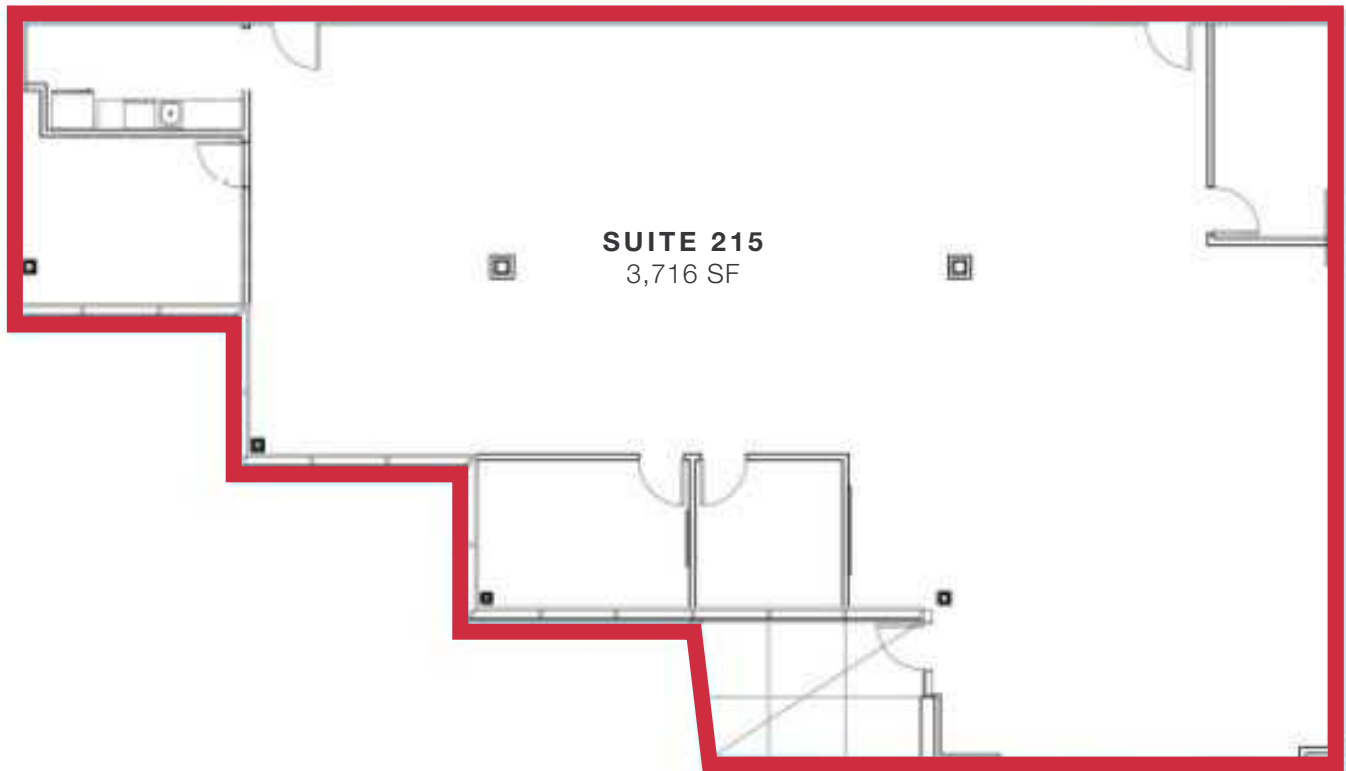


THE INFORMATION CONTAINED HEREIN HAS BEEN GIVEN TO US BY THE OWNER OF THE PROPERTY OR OTHER SOURCES WE DEEM RELIABLE, WE HAVE NO REASON TO DOUBT ITS ACCURACY, BUT WE DO NOT GUARANTEE IT. ALL INFORMATION SHOULD BE VERIFIED PRIOR TO PURCHASE OR LEASE.



nai-psp.com

Floor Plan



ALEX WHEATLEY

Vice President
+1 425 600 4550
awheatley@nai-psp.com



*Professional office
space for sublease
in Redmond*

Patio

Office - Open Floor Plan

Kitchen

Conference Room

Office - Available Furniture

ALEX WHEATLEY

Vice President

+1 425 600 4550

awheatley@nai-psp.com

