

410 Ida Street

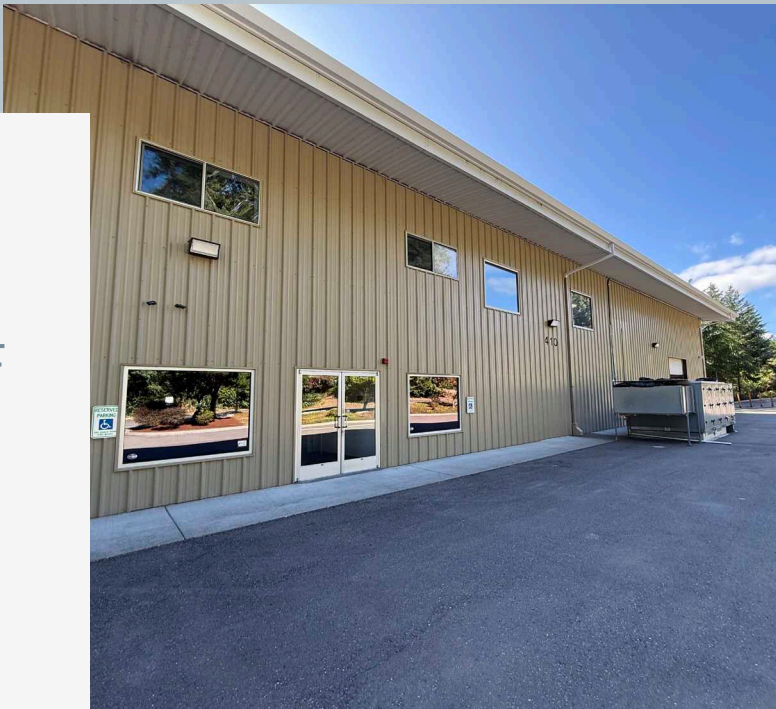
FOR LEASE
10,830 SF

410 IDA STREET | BREMERTON, WA



CBRE

Property Overview



Lease Rate

\$1.50 per
SF, NNN

Available

10,830 SF

Dock High Doors

2

Grade Level Doors

3

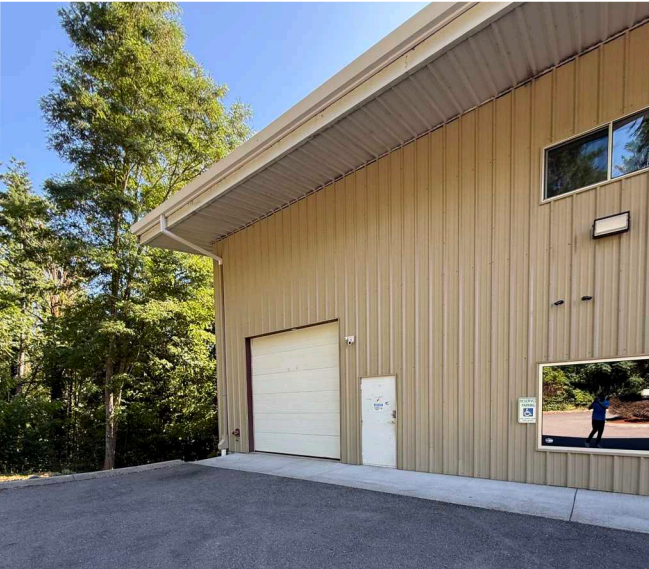
Office

3,180 SF

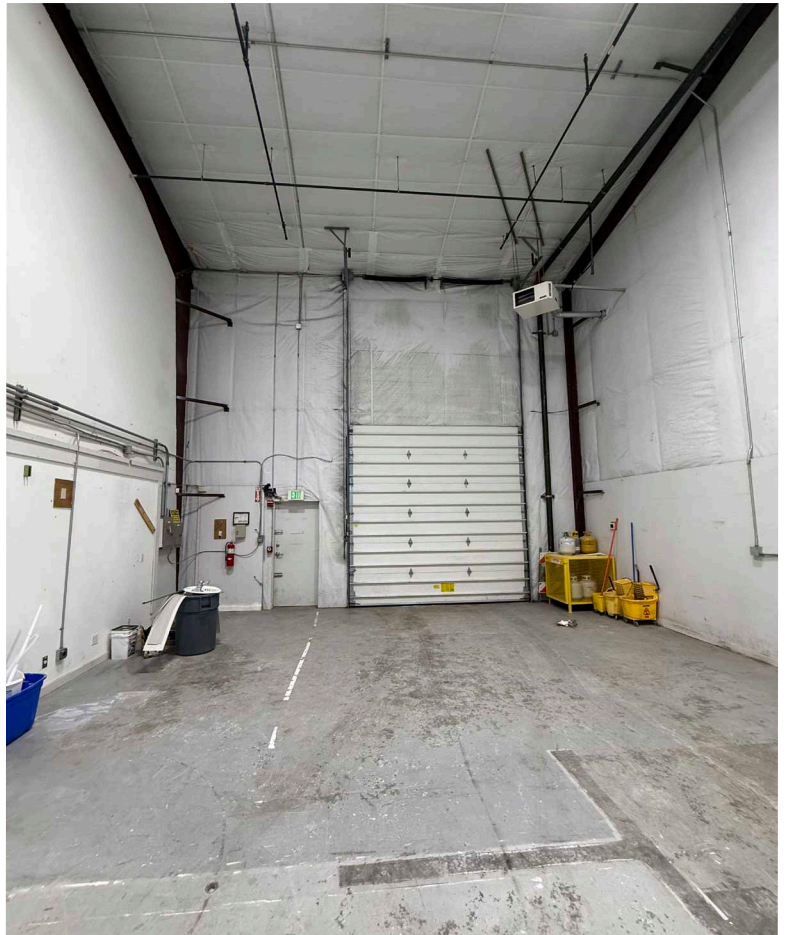
10,830 SF



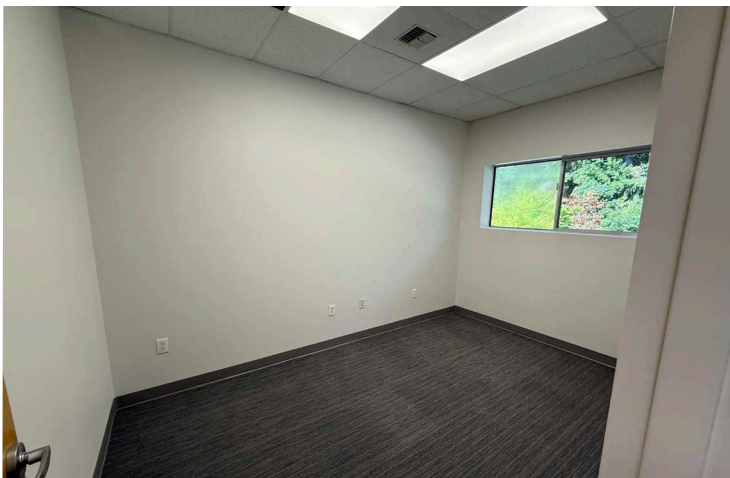
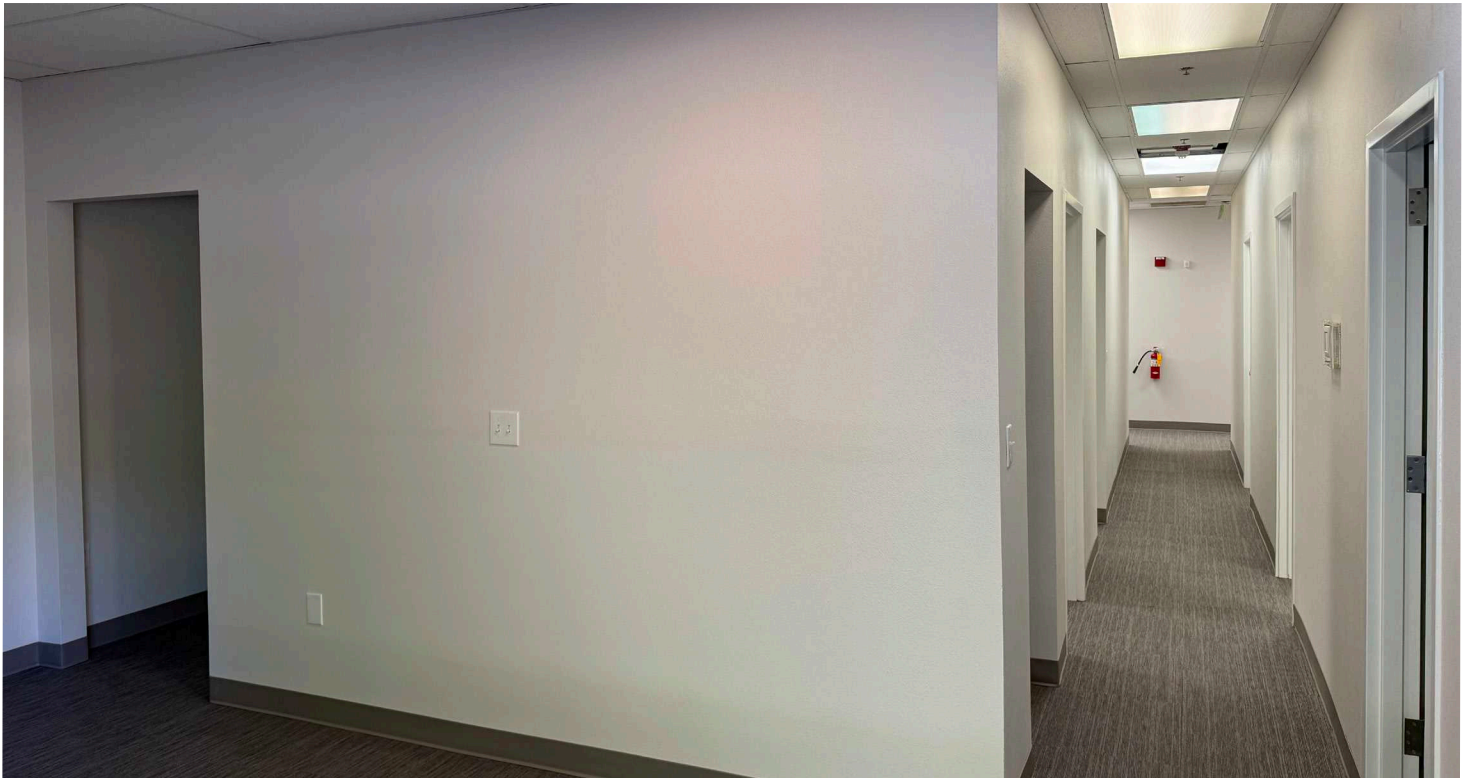
Exterior Photos



Warehouse Photos



Office Photos



410 Ida Street

FOR LEASE | 10,830 SF

PATRICIA LOVEALL, SIOR

Executive Vice President

+1 206 817 5551

patricia.loveall@cbre.com

JASON ROSAUER

Executive Vice President

+1 206 409 2199

jason.rosauer@cbre.com

NICK MACPHEE

Associate

+1 360 736 6656

nick.macphee@cbre.com

CBRE