

CANYON ROAD COMMERCE CENTER

5103 & 5223 136th St E | Frederickson, WA

CanyonRoadCommerceCenter.com

5103

TWO BUILDINGS FOR LEASE

±112,957 SF | ±161,733 SF

±274,690 SF TOTAL

NEWMARK

Trammell Crow Company

CBRE Investment
Management

PROPERTY HIGHLIGHTS



Demising Options Available Down to 40,000 SF



Signalized Intersection at Canyon Road East & 136th East



Each Building Can Be Fully Secured



10 Dock Levelers Installed in Both Buildings



30 FC LED Installed in Both Buildings



Zoning: Employment Corridor (ECOR)

275K SF Combined Area



WEST BUILDING



CLICK TO VIEW VIRTUAL TOUR

Total SF	112,957 SF
Spec Office SF	4,895 SF Available Now
Clear Height	32'
Loading Dock & Grade	21 Dock, 2 Grade
Sprinklers	ESFR
Column Spacing	50' x 52'
Speed Bay	60'
Truck Court	130'
Auto Parking	65

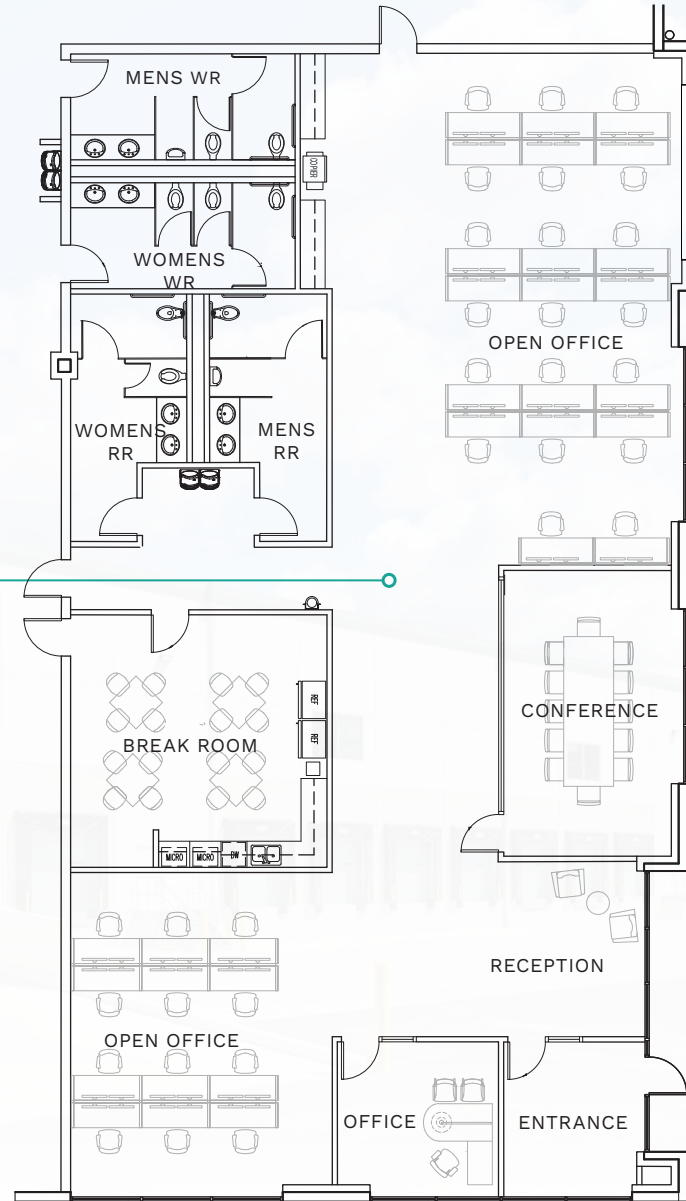
EAST BUILDING



CLICK TO VIEW VIRTUAL TOUR

Total SF	161,733 SF
Spec Office SF	4,610 SF Available Now
Clear Height	36'
Loading Dock & Grade	21 Dock, 2 Grade
Sprinklers	ESFR
Column Spacing	50' x 52'
Speed Bay	60'
Truck Court	130'
Auto Parking	93

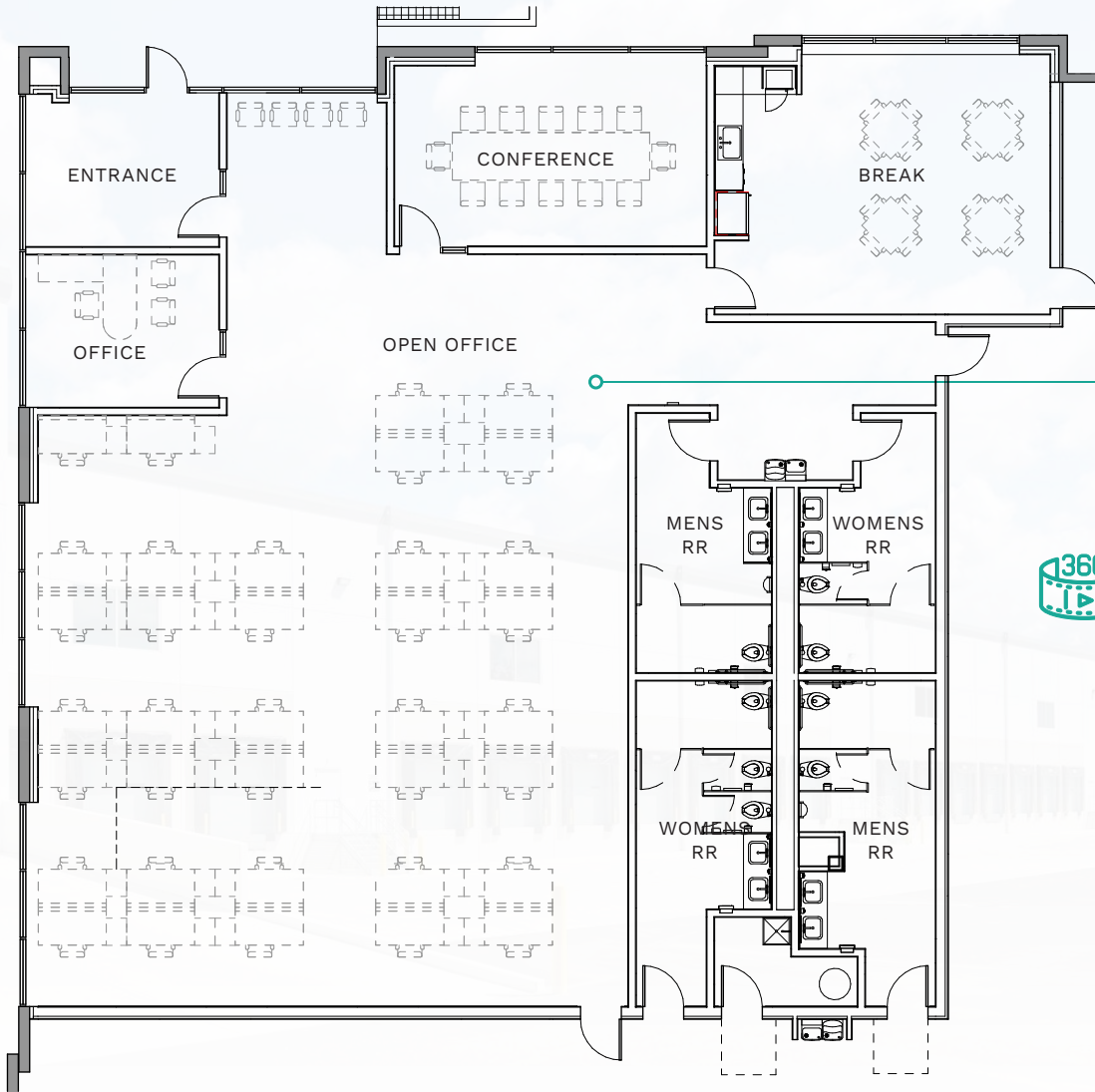




**CLICK TO VIEW
VIRTUAL TOUR**

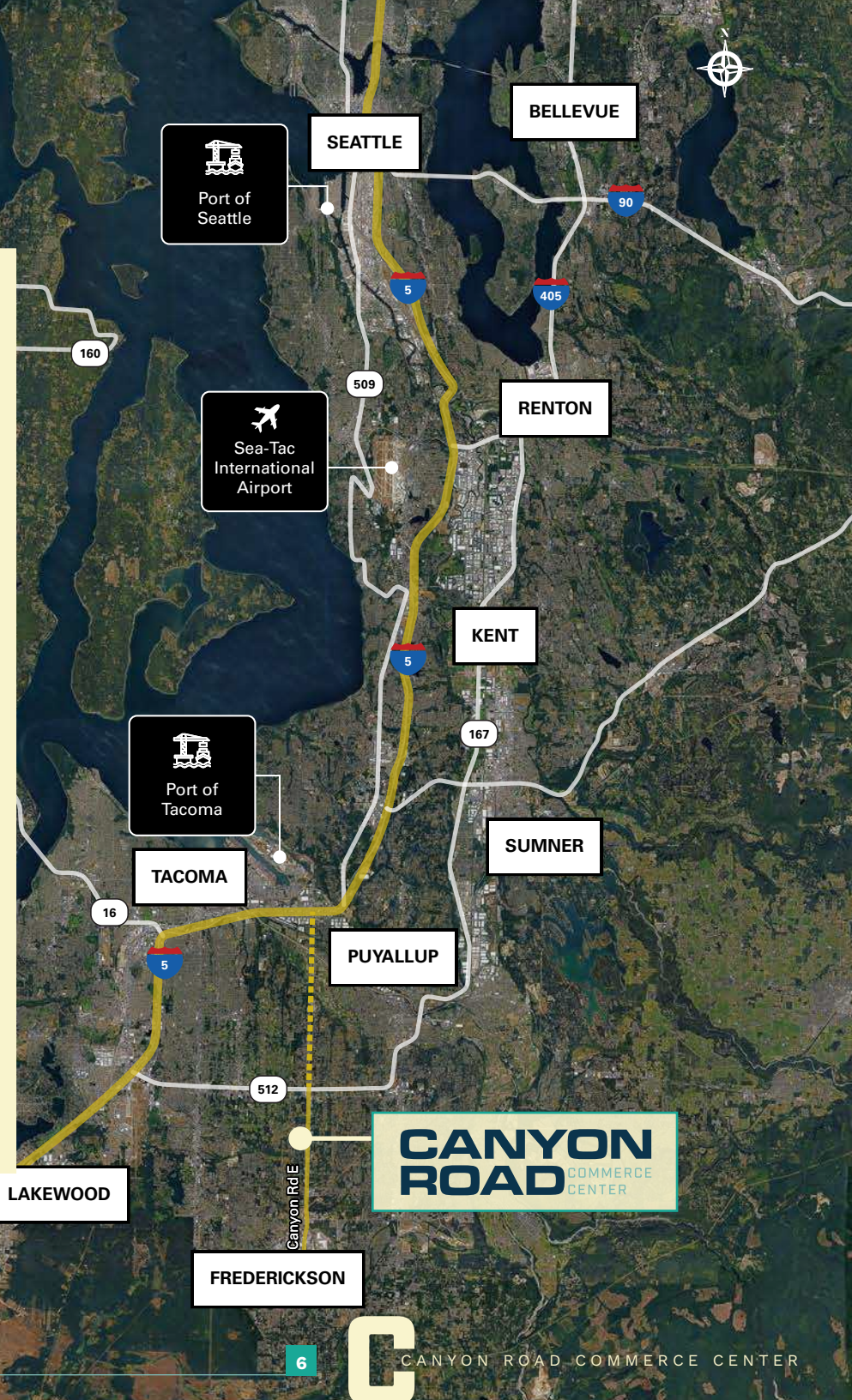
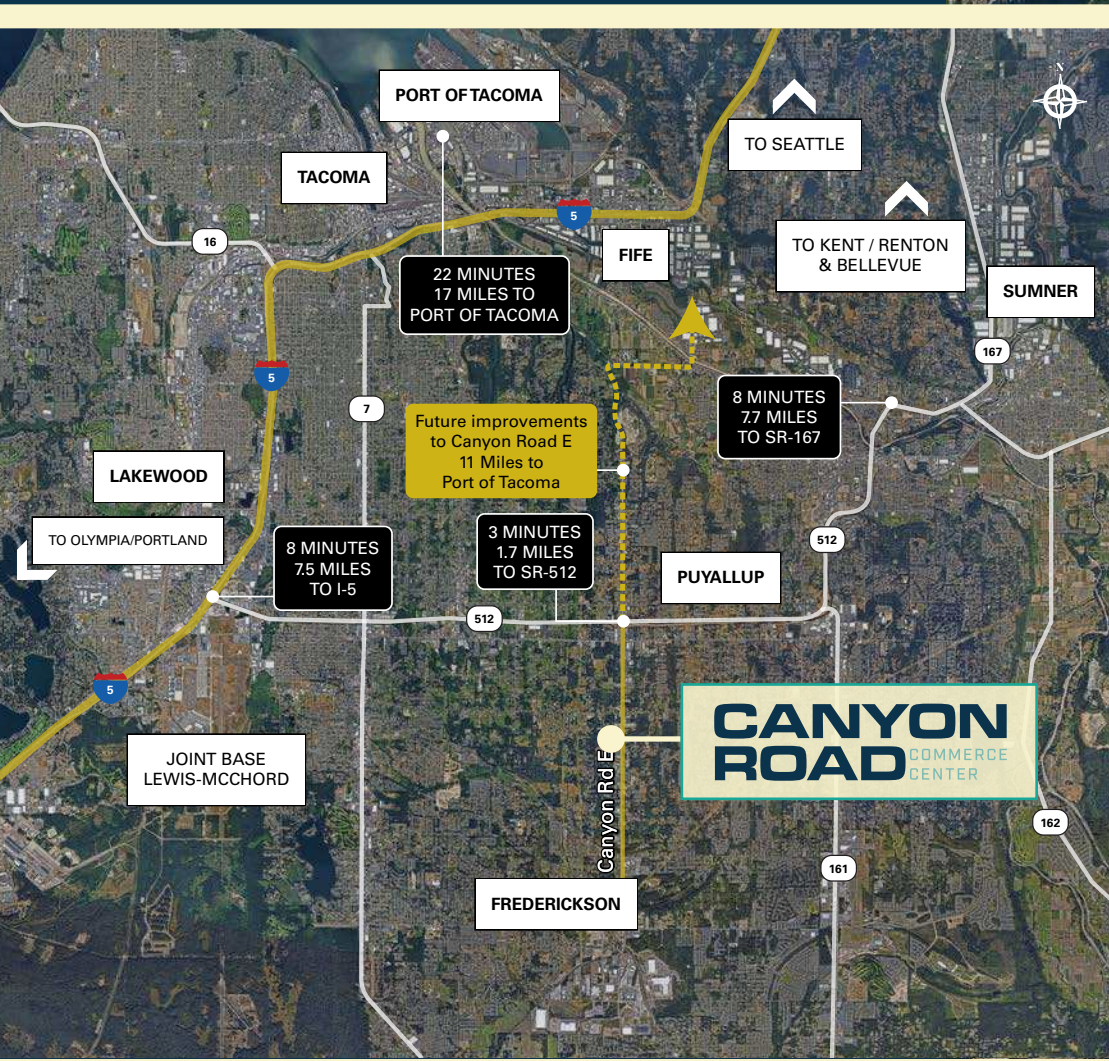
SPEC OFFICE PLAN

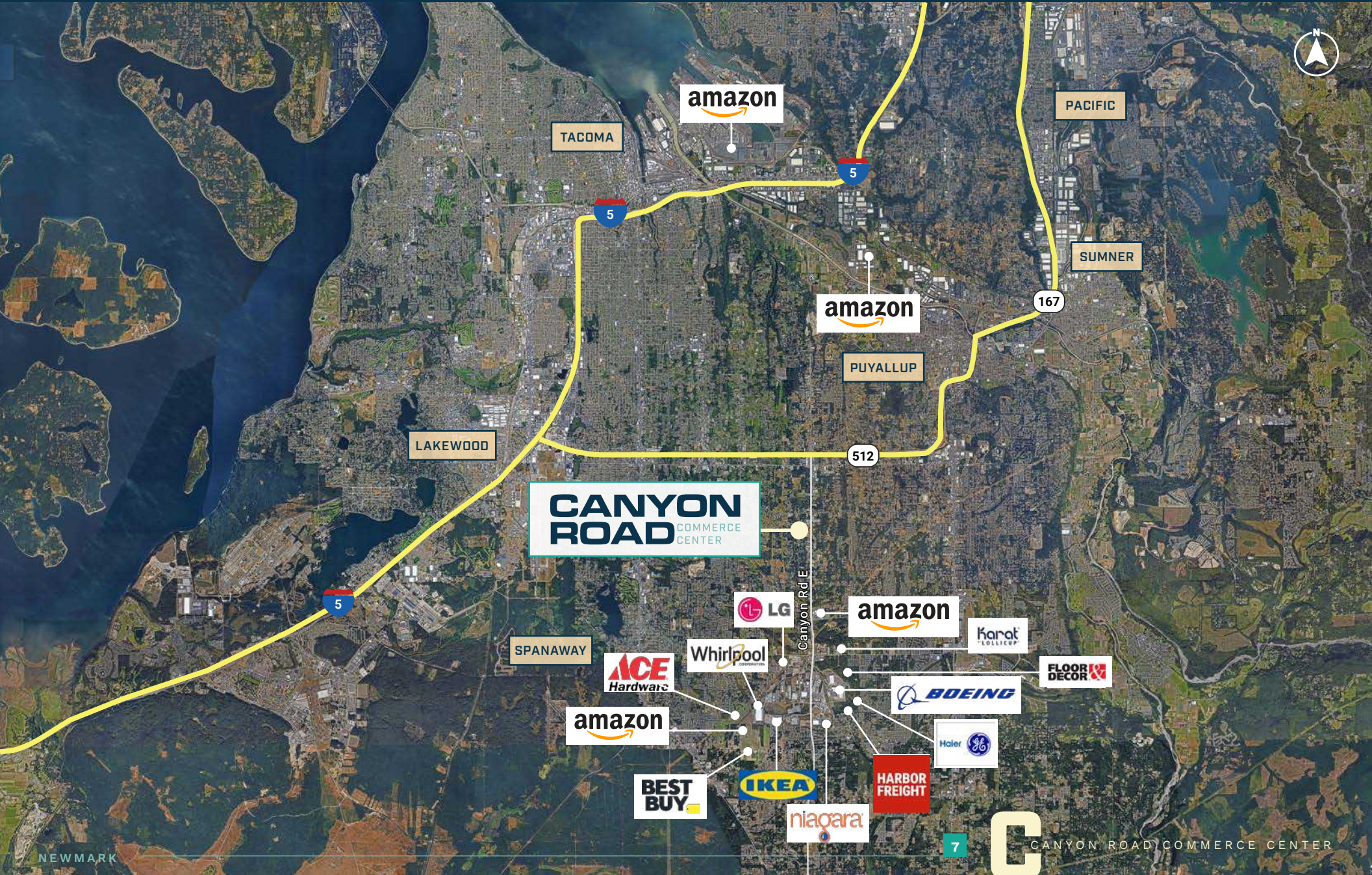




SPEC OFFICE PLAN







amazon

TACOMA

PACIFIC

SUMNER

amazon

PUYALLUP

LAKWOOD

CANYON ROAD
COMMERCE CENTER

512

SPANAWAY

LG

amazon

Karat
LOLLIPOP

ACE
Hardware

Whirlpool

FLOOR
DECOR

amazon

BOEING

BEST
BUY

IKEA

Haier
GE

HARBOR
FREIGHT

niagara

**DISTANCE TO
FROM FREDERICKSON, WA**



HWY 512

2 Miles

I-5

8 Miles

HWY 167

8 Miles



PORT OF TACOMA

17 Miles



SEA-TAC INTERNATIONAL AIRPORT

37 Miles



PORT OF SEATTLE

44 Miles



SEATTLE

45 Miles



PORTLAND, OR

141 Miles

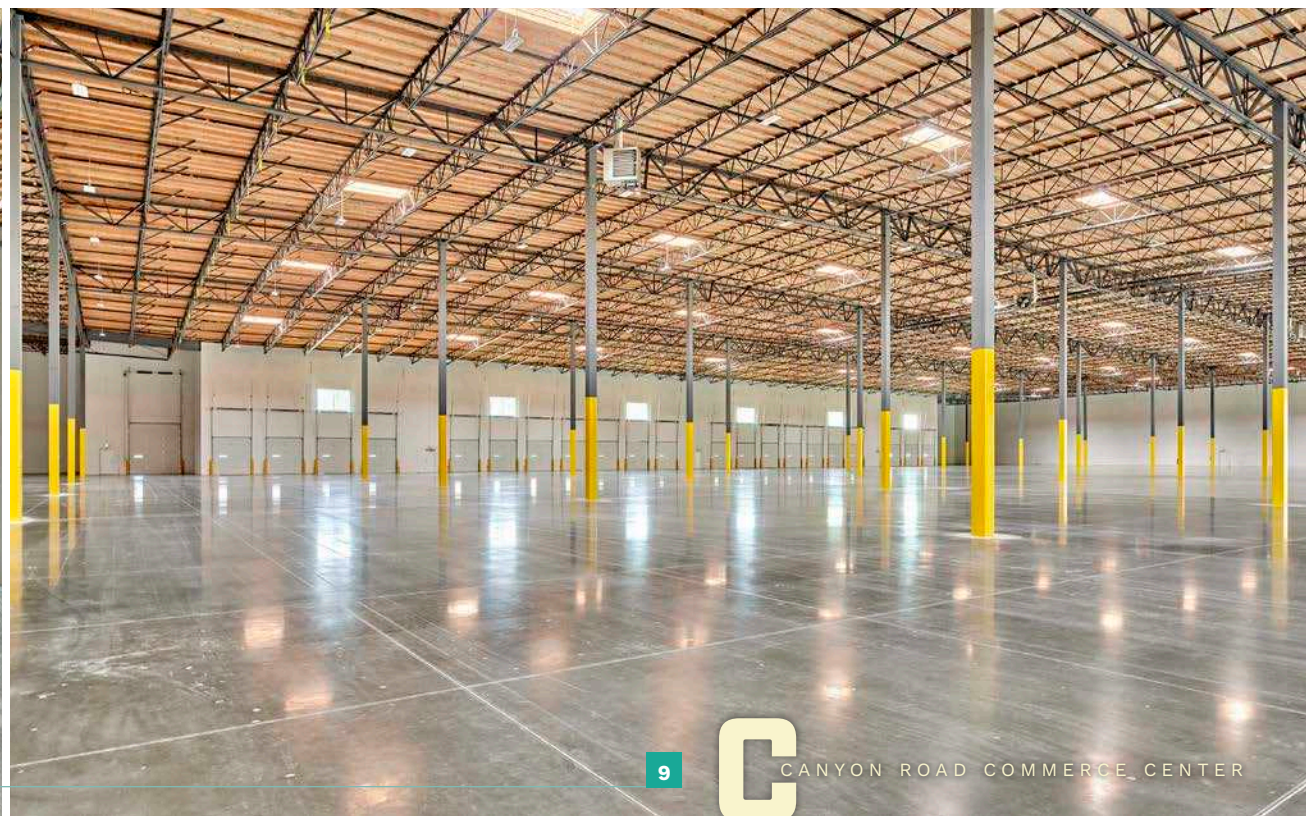
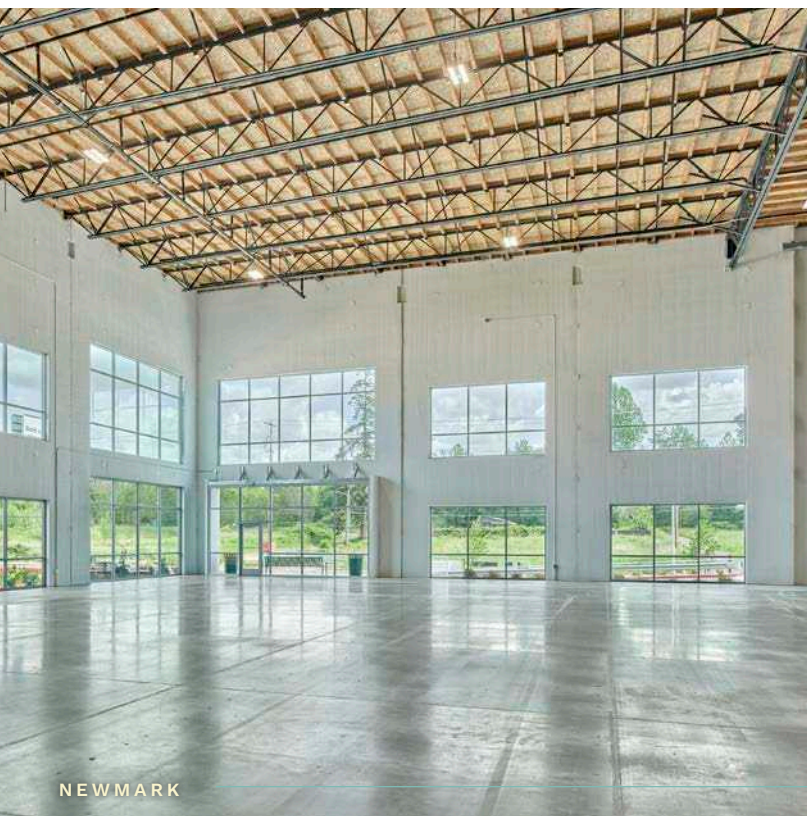


BOISE, ID

511 Miles



CANYON
ROAD COMMERCE
CENTER



CANYON ROAD

COMMERCE
CENTER

5103 & 5223 136th St E | Frederickson, WA

CanyonRoadCommerceCenter.com

THAD MALLORY, SIOR

Vice Chairman
425.362.1410
thad.mallory@nmrk.com

TAYLOR HOFF, SIOR

Vice Chairman
425.362.1388
taylor.hoff@nmrk.com

MORGAN RICHEY, SIOR

Managing Director
425.362.1409
morgan.richey@nmrk.com

10900 NE 4th St Suite 1430, Bellevue, WA 98004

The information contained herein has been obtained from sources deemed reliable but has not been verified and no guarantee, warranty or representation, either express or implied, is made with respect to such information. Terms of sale or lease and availability are subject to change or withdrawal without notice. 9160124440 | 07/25



NEWMARK

Trammell Crow Company

CBRE Investment
Management