



PROFESSIONAL OFFICE SPACE NEAR STATE CAPITOL



410 11TH AVE SE, OLYMPIA, WA

A professional office building adjacent to state and federal offices. Only blocks from easy Interstate 5 access with free on-site parking. The large windows offer breathtaking views of the capitol building and surrounding neighborhood. Common area restrooms and kitchen/breakroom.

**SUITE 200:** Includes a waiting area, open work area, large conference room, private office. Lots of windows which look out towards the capital building.

**SUITE 202:** Features a large open front area. It also includes a data/storage room, as well as a private office with territorial views.

1,270 SF

CBA# 10973278

\$19.00/SF MODIFIED GROSS

620 SF

CBA# 43174604

\$25.00/SF MODIFIED GROSS



This information, while obtained from sources we deem reliable, is not guaranteed. It is provided without any representation, warranty or guarantee, expressed or implied as to its accuracy. Prospective buyer or tenant should conduct an independent investigation and verification of all matters deemed to be material, including, but not limited to, statements of income and expenses. Consult your attorney, accountant, or other professional advisor.

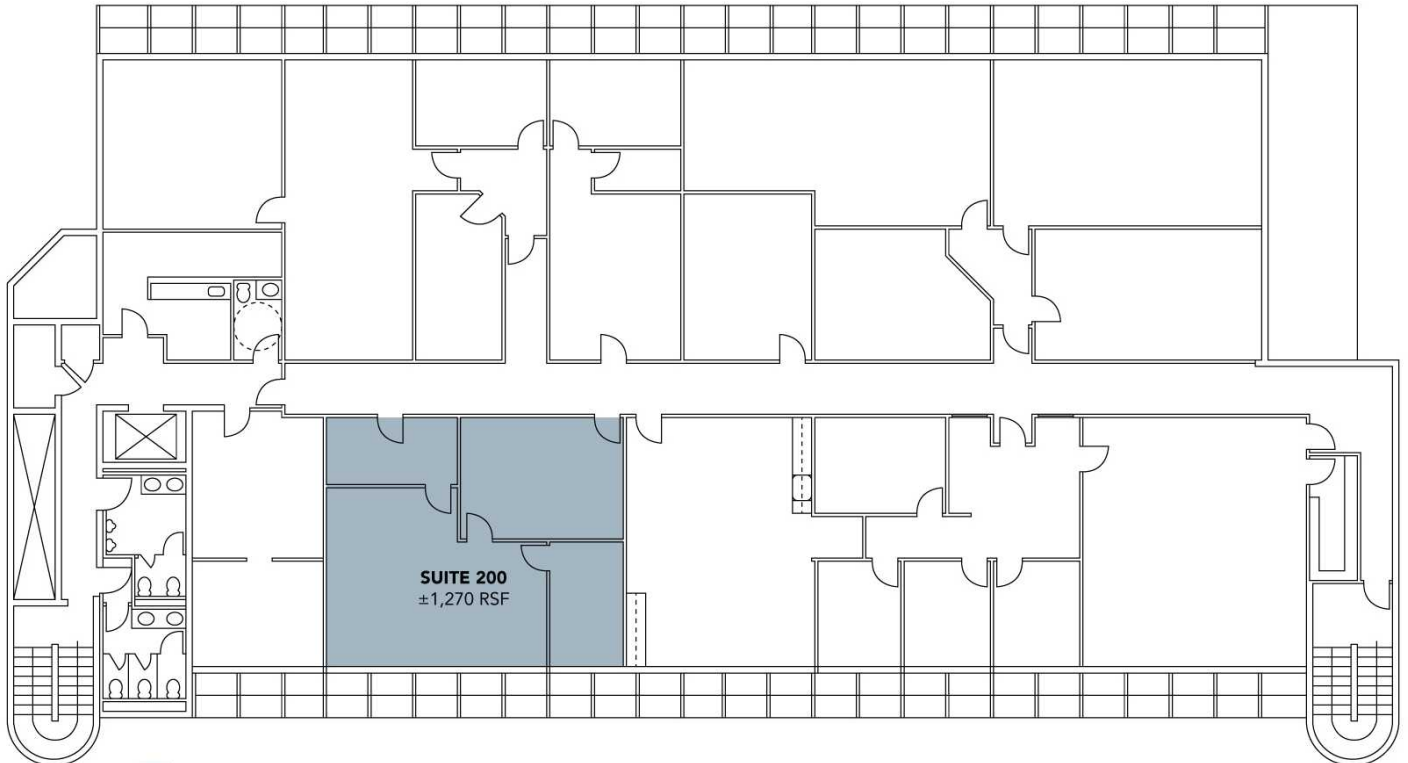


**Ian Zarosinski**  
BROKER  
(360) 800-5808  
ian@rantsgroup.com

**360-943-8060**  
RANTSGROUP.com

410 11TH AVE SE, OLYMPIA, WA

SUITE 200: 1,270 SF | \$19.00/SF MODIFIED GROSS



■ AVAILABLE

THIS FLOORPLAN IS NOT TO SCALE 



## CONTACT

**Ian Zarosinski**  
BROKER  
(360) 800-5808  
ian@rantsgroup.com



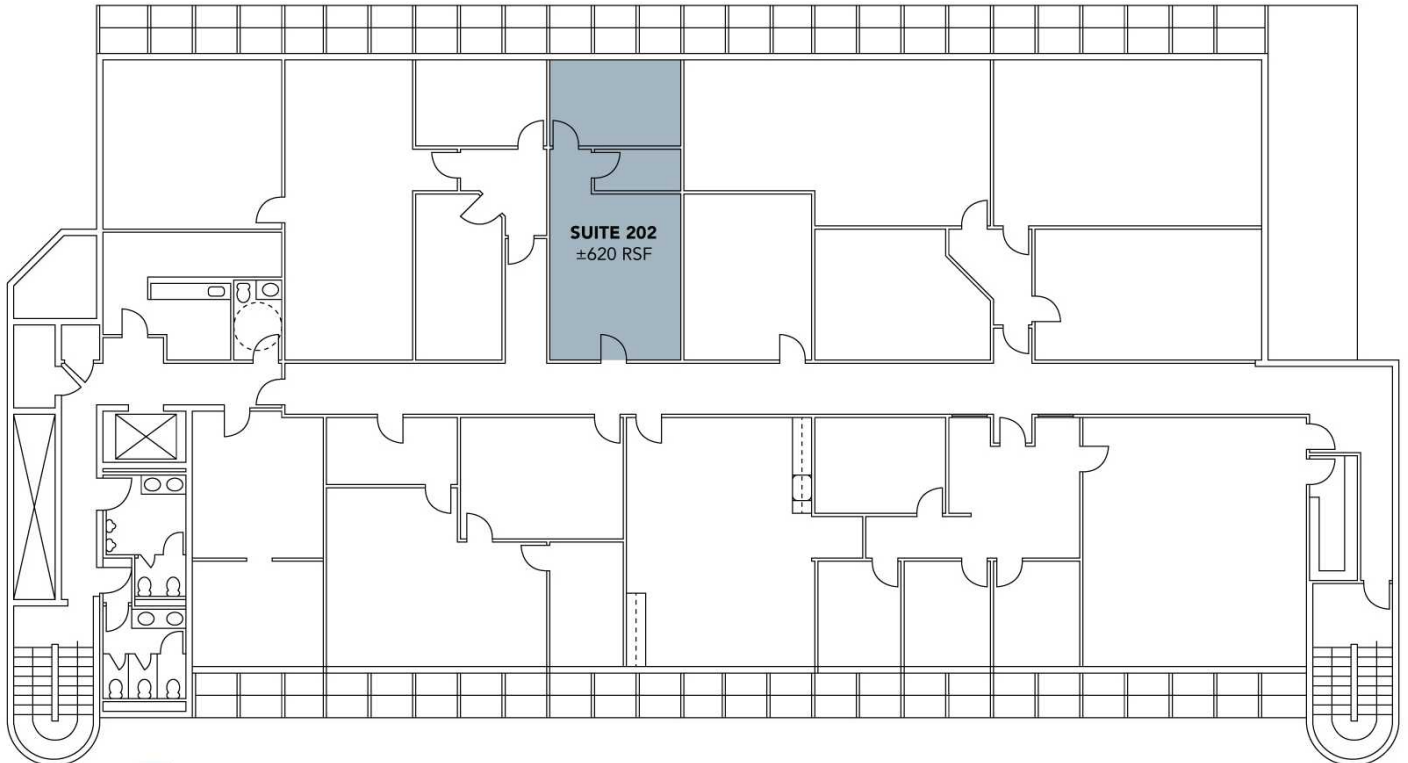
rants.group/41011thAveSE200

This information, while obtained from sources we deem reliable, is not guaranteed. It is provided without any representation, warranty or guarantee, expressed or implied as to its accuracy. Prospective buyer or tenant should conduct an independent investigation and verification of all matters deemed to be material, including, but not limited to, statements of income and expenses. Consult your attorney, accountant, or other professional advisor.

360-943-8060 | RANTSGROUP.com

410 11TH AVE SE, OLYMPIA, WA

SUITE 202: 620 SF | \$25.00/SF MODIFIED GROSS



**AVAILABLE**

THIS FLOORPLAN IS NOT TO SCALE 



## CONTACT

**Ian Zarosinski**  
BROKER  
(360) 800-5808  
ian@rantsgroup.com



rants.group/41011thAveSE202

This information, while obtained from sources we deem reliable, is not guaranteed. It is provided without any representation, warranty or guarantee, expressed or implied as to its accuracy. Prospective buyer or tenant should conduct an independent investigation and verification of all matters deemed to be material, including, but not limited to, statements of income and expenses. Consult your attorney, accountant, or other professional advisor.

**360-943-8060** | **RANTSGROUP.com**