

Office space for **sublease**

27304 152nd Ave SE

27304 152nd Ave SE, Suite 200 | Kent, WA 98042

Space Highlights

- Floor 2: 3,539 RSF – Available Now
- Sublease through 04/30/2027
- Furniture available
- Mix of private offices, shared offices, conference room, and communal areas
- Private ground floor entrance



Sublease term
through 04/30/2027




Abundant free
surface parking



Natural light
carpeted floors



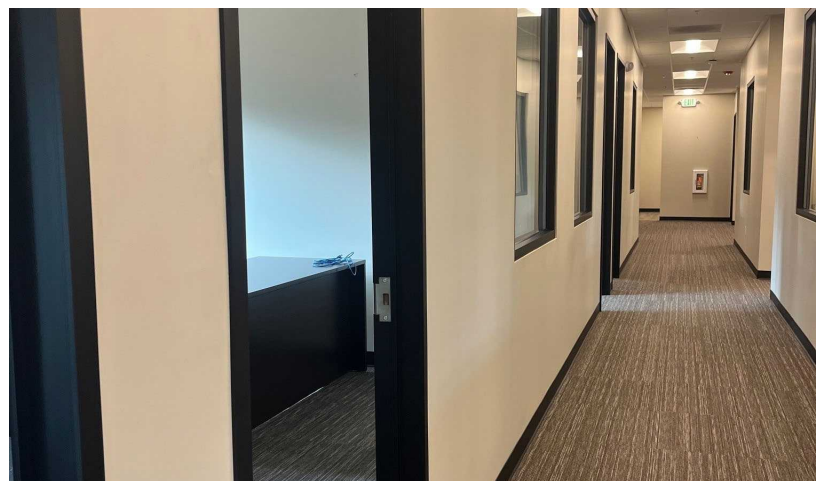
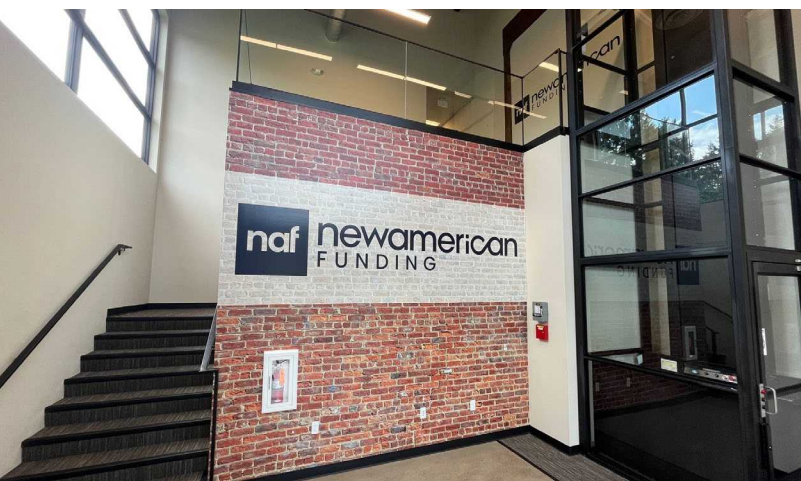
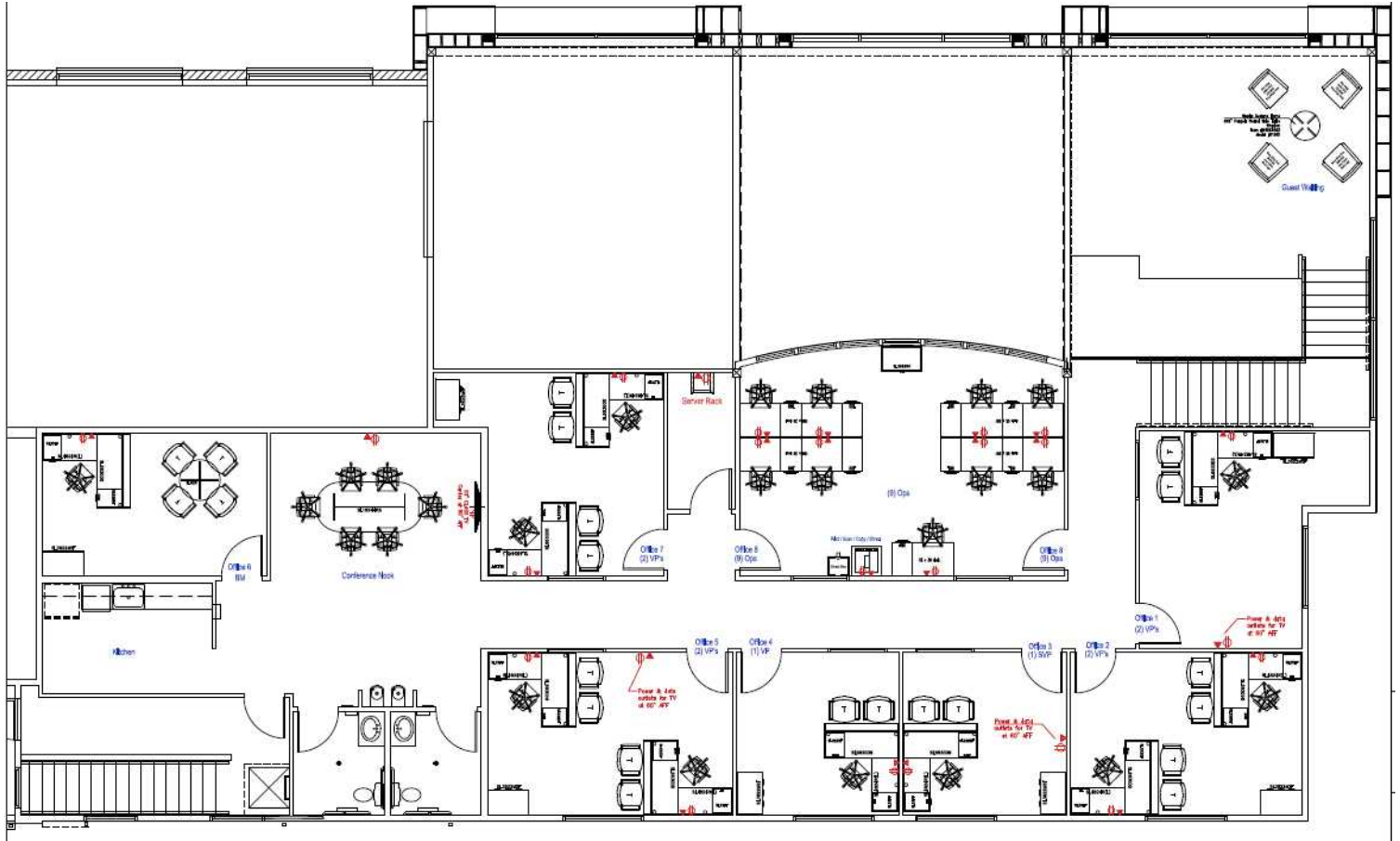
Sam Dommer
+1 206 915 3964
Sam.Dommer@jll.com

 **JLL** SEE A BRIGHTER WAY


Although information has been obtained from sources deemed reliable, Owner, Jones Lang LaSalle, and/or their representatives, brokers or agents make no guarantees as to the accuracy of the information contained herein, and offer the Property without express or implied warranties of any kind. The Property may be withdrawn without notice. If the recipient of this information has signed a confidentiality agreement regarding this matter, this information is subject to the terms of that agreement. ©2025. Jones Lang LaSalle. All rights reserved.

Office Space for Sublease

Floor 2: 3,539 RSF



Sam Dommer
+1 206 915 3964
Sam.Dommer@jill.com

 SEE A BRIGHTER WAY

Although information has been obtained from sources deemed reliable, Owner, Jones Lang LaSalle, and/or their representatives, brokers or agents make no guarantees as to the accuracy of the information contained herein, and offer the Property without express or implied warranties of any kind. The Property may be withdrawn without notice. If the recipient of this information has signed a confidentiality agreement regarding this matter, this information is subject to the terms of that agreement. ©2025, Jones Lang LaSalle. All rights reserved.