

HILL INDUSTRIAL - 190A

FOR LEASE: 24,000 SF

8805 SOUTH 190TH ST | KENT, WA 98032

END CAP SPACE AVAILABLE IN NORTH KENT

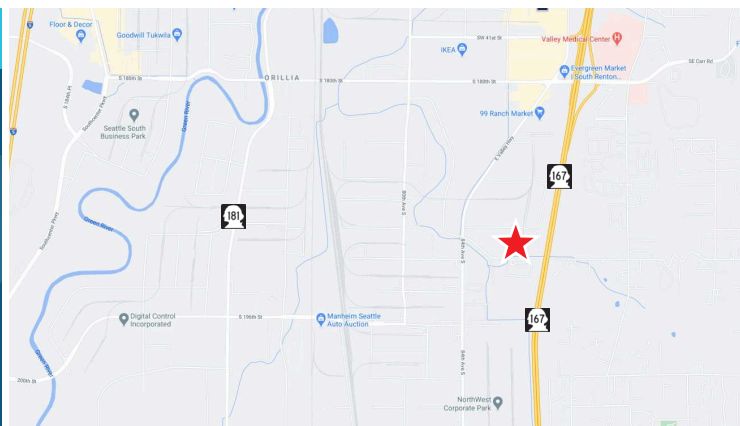


LEASE INFORMATION

Available Size	Office Size	Loading	Clear Height	Column Spacing	Lease Rate	Available
24,000 SF	1,900 SF	1 GL & 2 DH	24'	60' x 20'	Call Broker	5/1/2026

PROPERTY HIGHLIGHTS

- 200 amps of 277/480 volt, 3-phase power
- End cap unit
- Convenient access to I-5, I-405, and Hwy-167
- Site can have rail access (Burlington Northern)
Tenant would need to do minor modifications to spur



JOE SCALZO
206.719.7104
jscalzo@neilwalter.com

All information references in this document are approximate. The information contained herein is contained from sources deemed reliable. It is provided without representation, warranty, or guarantee, expressed or implied as to accuracy. Prospective buyer or tenant should conduct its own independent investigation relating to the property, government codes and regulations, allowed uses, and all other matters, regardless of whether they are referred to or contained in this document.

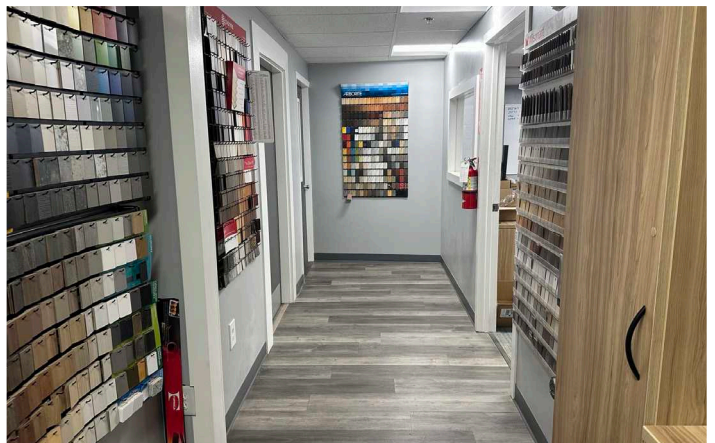
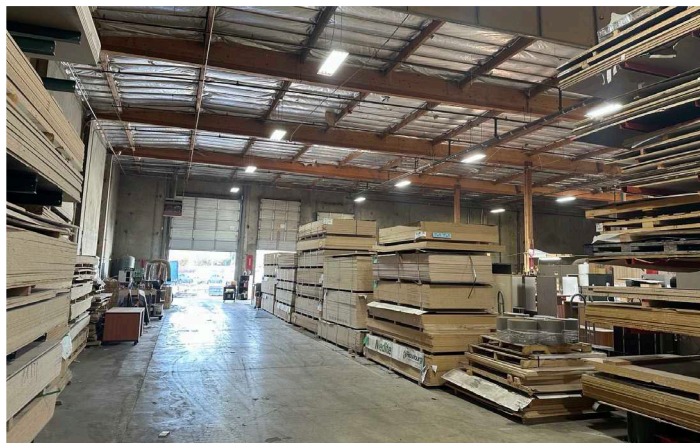
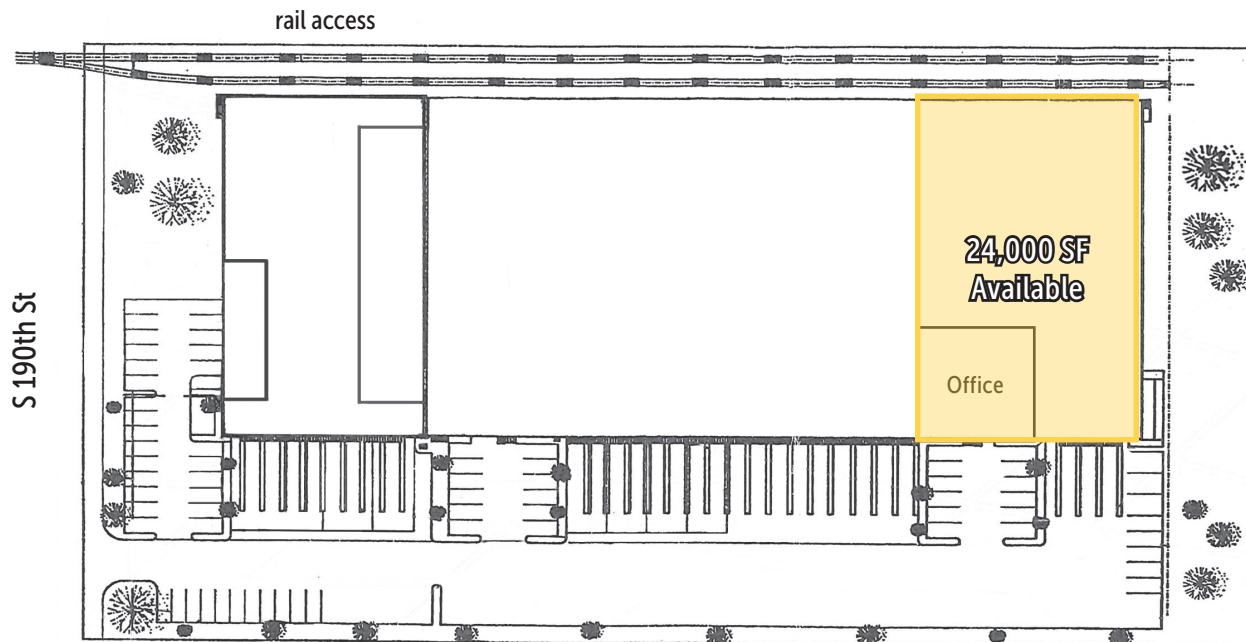
HILL INDUSTRIAL - 190A

8805 SOUTH 190TH ST | KENT, WA 98032



NEIL WALTER
COMPANY

Available Size	Office Size	Loading	Clear Height	Column Spacing	Lease Rate	Available
24,000 SF	1,900 SF	1 GL & 2 DH	24'	60' x 20'	Call Broker	5/1/2026



JOE SCALZO

206.719.7104

jscalzo@neilwalter.com

550 S Michigan St

Seattle, WA 98108

206.787.1800

www.neilwalter.com

All information references in this document are approximate. The information contained herein is contained from sources deemed reliable. It is provided without representation, warranty, or guarantee, expressed or implied as to accuracy. Prospective buyer or tenant should conduct its own independent investigation relating to the property, government codes and regulations, allowed uses, and all other matters, regardless of whether they are referred to or contained in this document.