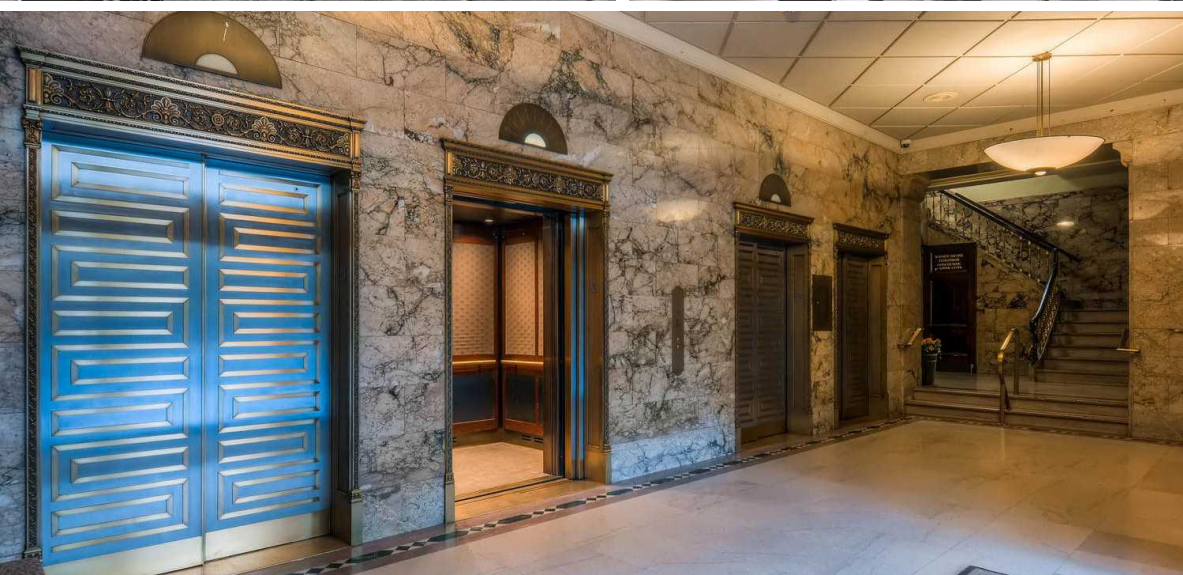




**THE SKINNER BUILDING**  
1326 5TH AVE • SEATTLE, WA





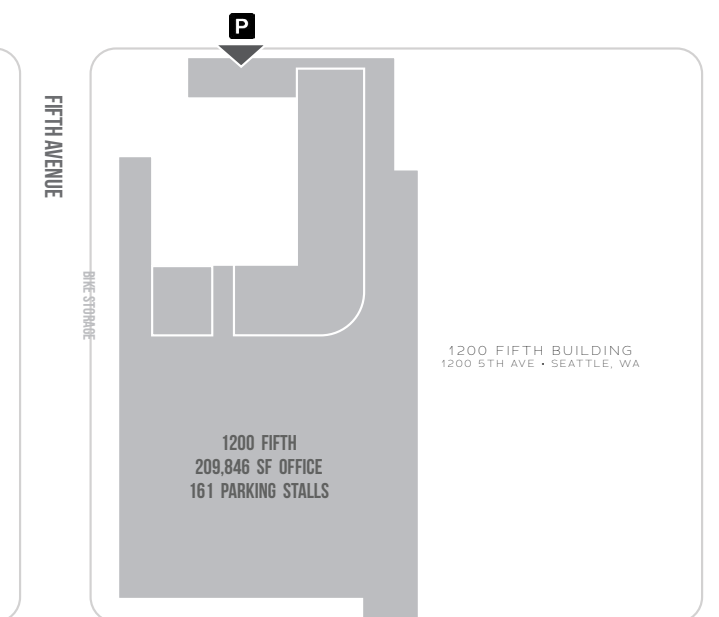
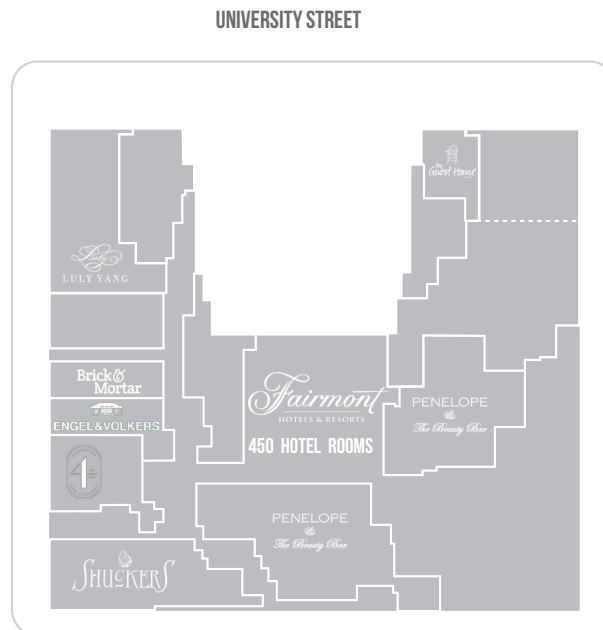
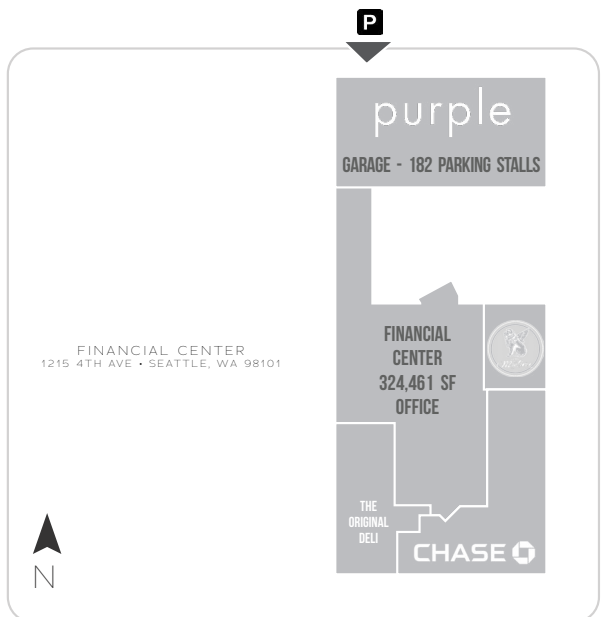
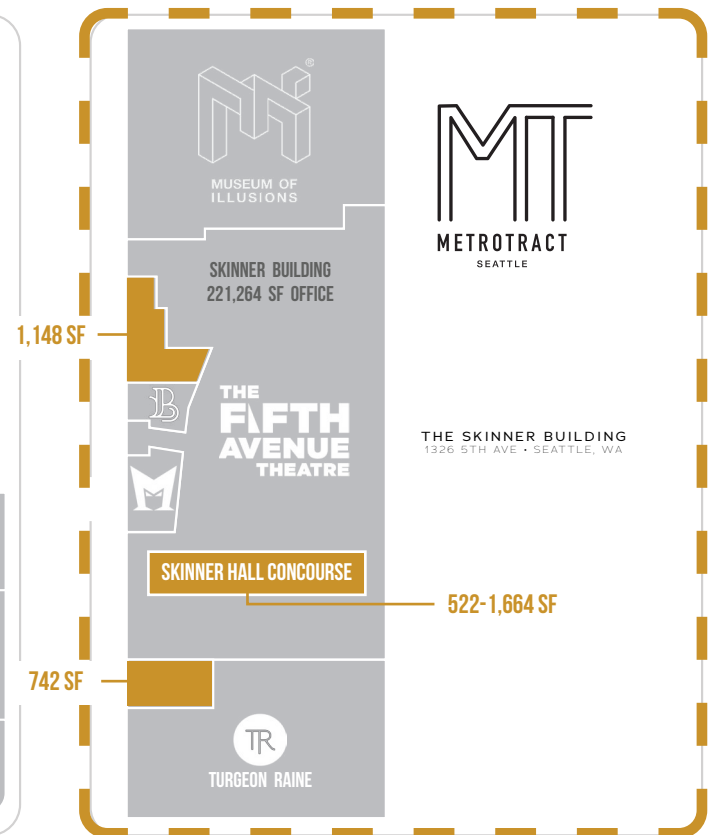
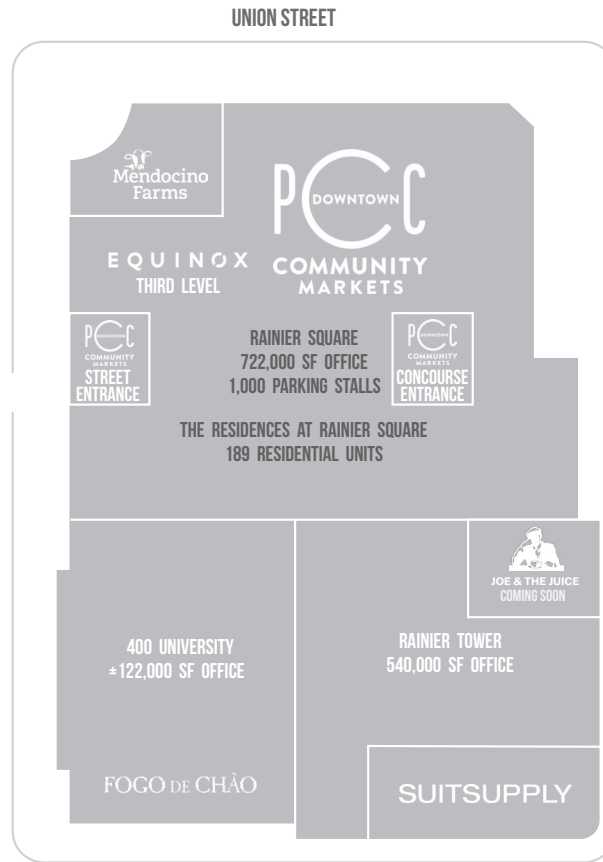
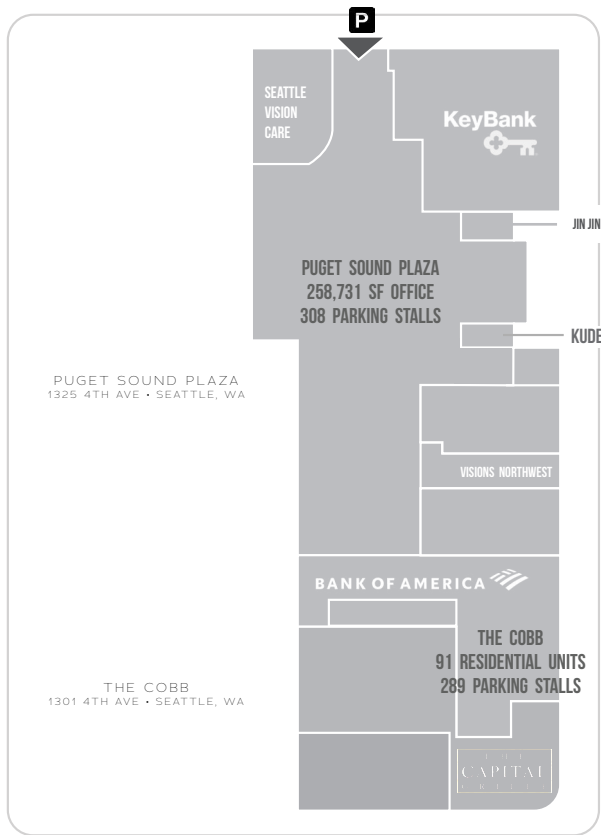
## A CENTURY OF HISTORY

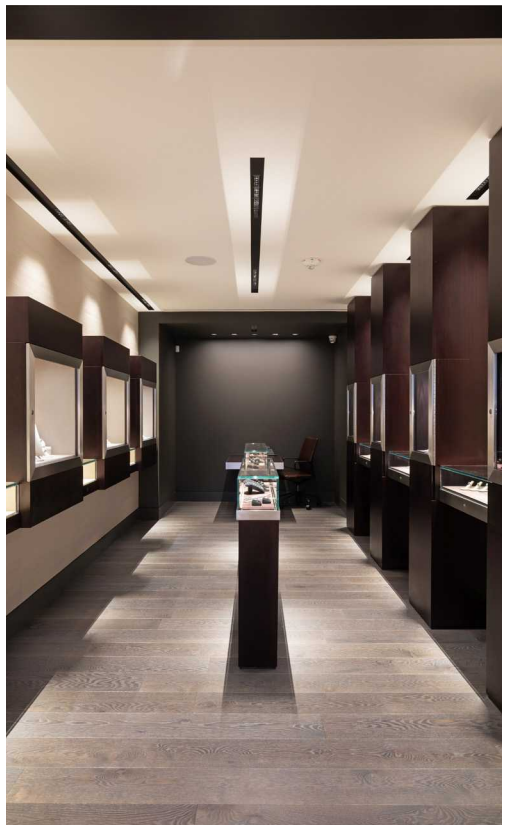
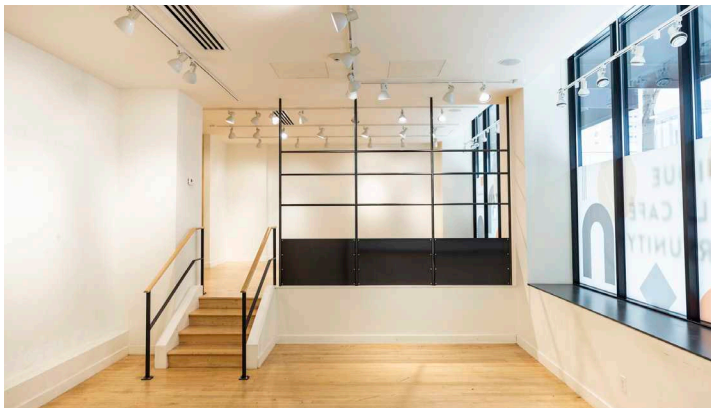
In 1895, the original location of the University of Washington Campus relocated to its present location on the shores of Lake Washington. Since then, the famed 10-acres of the Metropolitan Tract has been guided under common direction with a focus on the Arts & Culture making it one of the most unique districts in the country.

## 1-Mile Radius Demographics

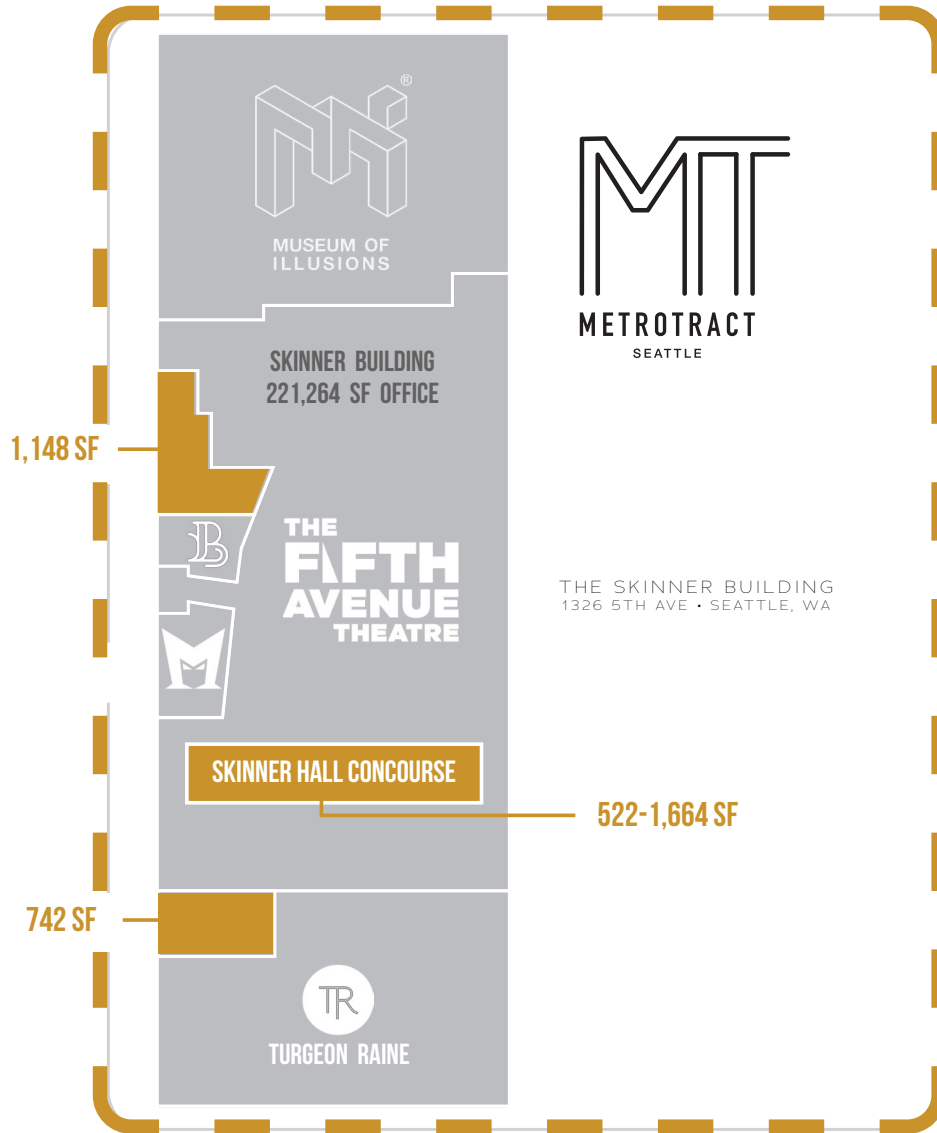
	<b>253,823</b>	DAYTIME POPULATION
	<b>27,769</b>	RESIDENTIAL POPULATION
	<b>10,677</b>	AVG. DAILY HOTEL GUESTS







UNION STREET



UNIVERSITY STREET



## SKINNER BUILDING

Home to the new Turgeon Raine flagship store, the iconic 5th Ave Theater and it's 300,000+ annual visitors, and across from Suit Supply's new flagship store, the Skinner Building is one of the most recognizable historic buildings in downtown Seattle. The timeless architectural details are obvious throughout, while still offering the ability for new retail tenants to put their own unique stamp within their storefronts. The concourse level connecting the Skinner Building to Rainier Square, Union Square and the Hilton Hotel is undergoing a complete reimagining offering food and beverage and service tenants a unique opportunity to be a part of a market hall lineup of highly curated operators.

### AVAILABLE SQ.FT.

1322 Fifth Ave. ....	1,148 SF
<i>Retail or Coffee / non-vented food user with direct lobby connectivity</i>	
1322 Fifth Ave. ....	742 SF
Concourse .....	522 - 1,664 SF
<i>Contact for details</i>	

Please inquire for rates

REAL RETAIL



MT  
METROTRACT  
SEATTLE

SHOP

EAT

DRINK

EXPLORE

REAL RETAIL

# SKINNER BUILDING

# MT

METROTRACT

SEATTLE

**THE SKINNER BUILDING**

1326 5TH AVE • SEATTLE, WA

REAL **RETAIL**

**ANDREW MILLER**

206-381-1206 OFFICE

206-818-3629 CELL

AMILLER@REAL-RETAIL.NET

**ERIC ZUEHLSDORFF**

206-838-5481 OFFICE

808-221-1134 CELL

ERIC@REAL-RETAIL.NET