



**FOR LEASE**

# McGee Professional Building

24003 Bothell Everett Hwy, Bothell, WA

*This prime office space offers modern design, top amenities, and excellent accessibility for businesses to thrive.*

## PROPERTY HIGHLIGHTS

- + Prime commercial location
- + modern turn-key office spaces
- + Ample parking for tenants and visitors
- + Strategic visibility and accessibility
- + State-of-the-art amenities including high-speed internet
- + Proximity to major transportation routes
- + Diverse dining and retail options nearby
- + Fully equipped kitchen

**BLAKE STEDMAN**  
Senior Vice President  
+1 425 586 5621  
bstedman@nai-psp.com

**RICHARD ZHOU**  
Associate  
+1 425 586 5623  
rzhou@nai-psp.com



THE INFORMATION CONTAINED HEREIN HAS BEEN GIVEN TO US BY THE OWNER OF THE PROPERTY OR OTHER SOURCES WE DEEM RELIABLE, WE HAVE NO REASON TO DOUBT ITS ACCURACY, BUT WE DO NOT GUARANTEE IT. ALL INFORMATION SHOULD BE VERIFIED PRIOR TO PURCHASE OR LEASE.

TOTAL SF

**1,890 SF**

PRICE/SF

**\$22.00**

TYPE

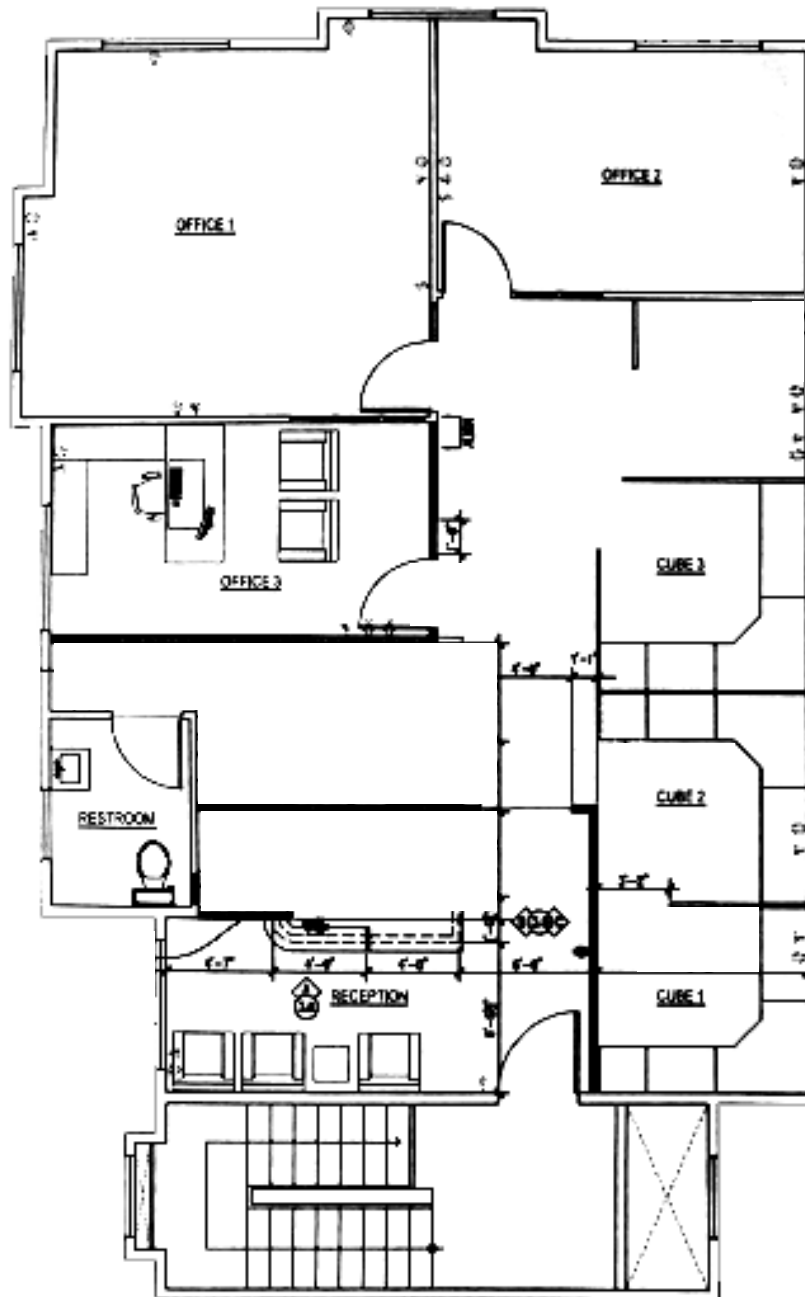
**NNN, \$8.63**

AVAILABLE

**Immediately**

[nai-psp.com](http://nai-psp.com)

# Floor Plan

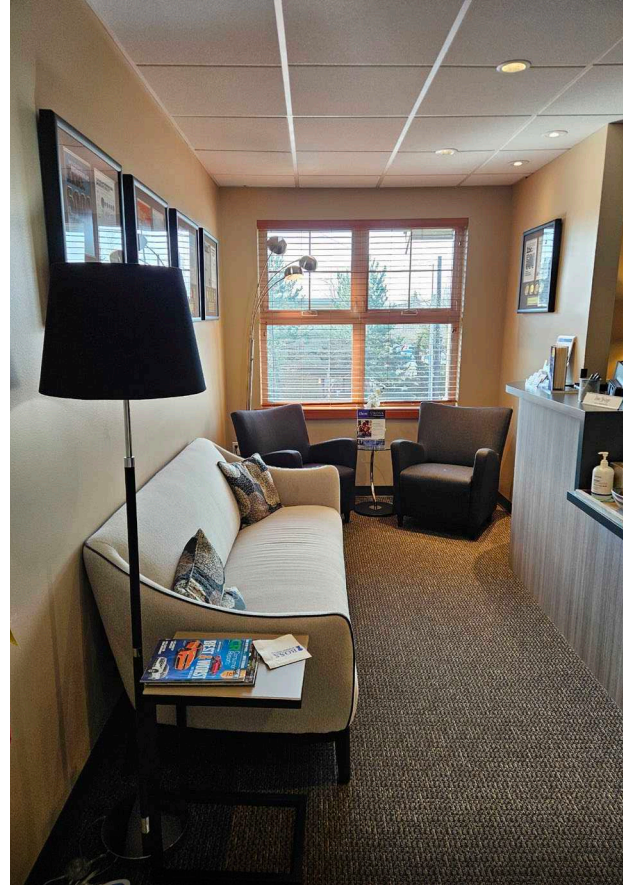


**BLAKE STEDMAN**  
Senior Vice President  
+1 425 586 5621  
bstedman@nai-psp.com

**RICHARD ZHOU**  
Associate  
+1 425 586 5623  
rzhou@nai-psp.com



*Office space for lease  
in Bothell*

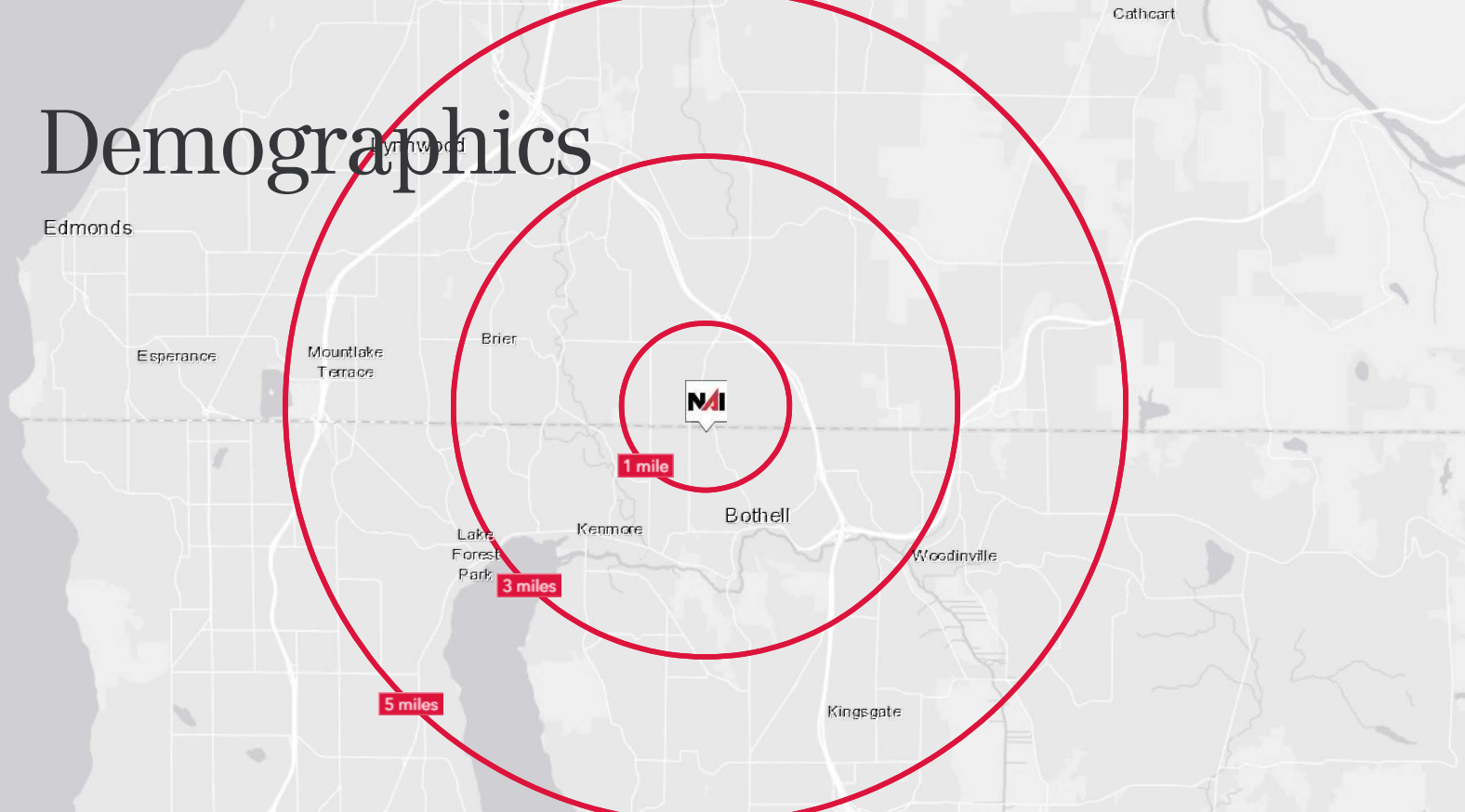


**BLAKE STEDMAN**  
Senior Vice President  
+1 425 586 5621  
bstedman@nai-psp.com

**RICHARD ZHOU**  
Associate  
+1 425 586 5623  
rzhou@nai-psp.com



# Demographics



## 24003 BOTHELL EVERETT HWY, BOTHELL, WA

|                  | 1 MILE    | 3 MILES   | 5 MILES   |
|------------------|-----------|-----------|-----------|
| Population       | 12,350    | 110,263   | 289,832   |
| 2029 Population  | 13,213    | 115,844   | 304,336   |
| Households       | 4,683     | 43,875    | 116,058   |
| Median Age       | 39.0      | 38.6      | 38.7      |
| Median HH Income | \$153,743 | \$142,301 | \$130,702 |

**BLAKE STEDMAN**  
Senior Vice President  
+1 425 586 5621  
bstedman@nai-psp.com

**RICHARD ZHOU**  
Associate  
+1 425 586 5623  
rzhou@nai-psp.com

