

# NORTHWEST TECH CENTER

6801 185<sup>th</sup> Ave. NE  
REDMOND, WASHINGTON



**TYLER SLONE**  
425.274.4281  
[slone@broderickgroup.com](mailto:slone@broderickgroup.com)

**PAUL JERUE**  
425.646.5223  
[jerue@broderickgroup.com](mailto:jerue@broderickgroup.com)

**ERIC MEUSSNER**  
425.274.4282  
[meussner@broderickgroup.com](mailto:meussner@broderickgroup.com)

*The information contained herein has been given to us by the owner or sources that we deem reliable. We have no reason to doubt its accuracy, but we do not guarantee it. Prospective tenants should carefully verify all information contained herein.*

# NORTHWEST TECH CENTER

## CAMPUS FEATURES:

- High image finishes
- Extensive glass line
- Conveniently located close to the future light rail near Downtown Redmond
- Easy access to SR-520

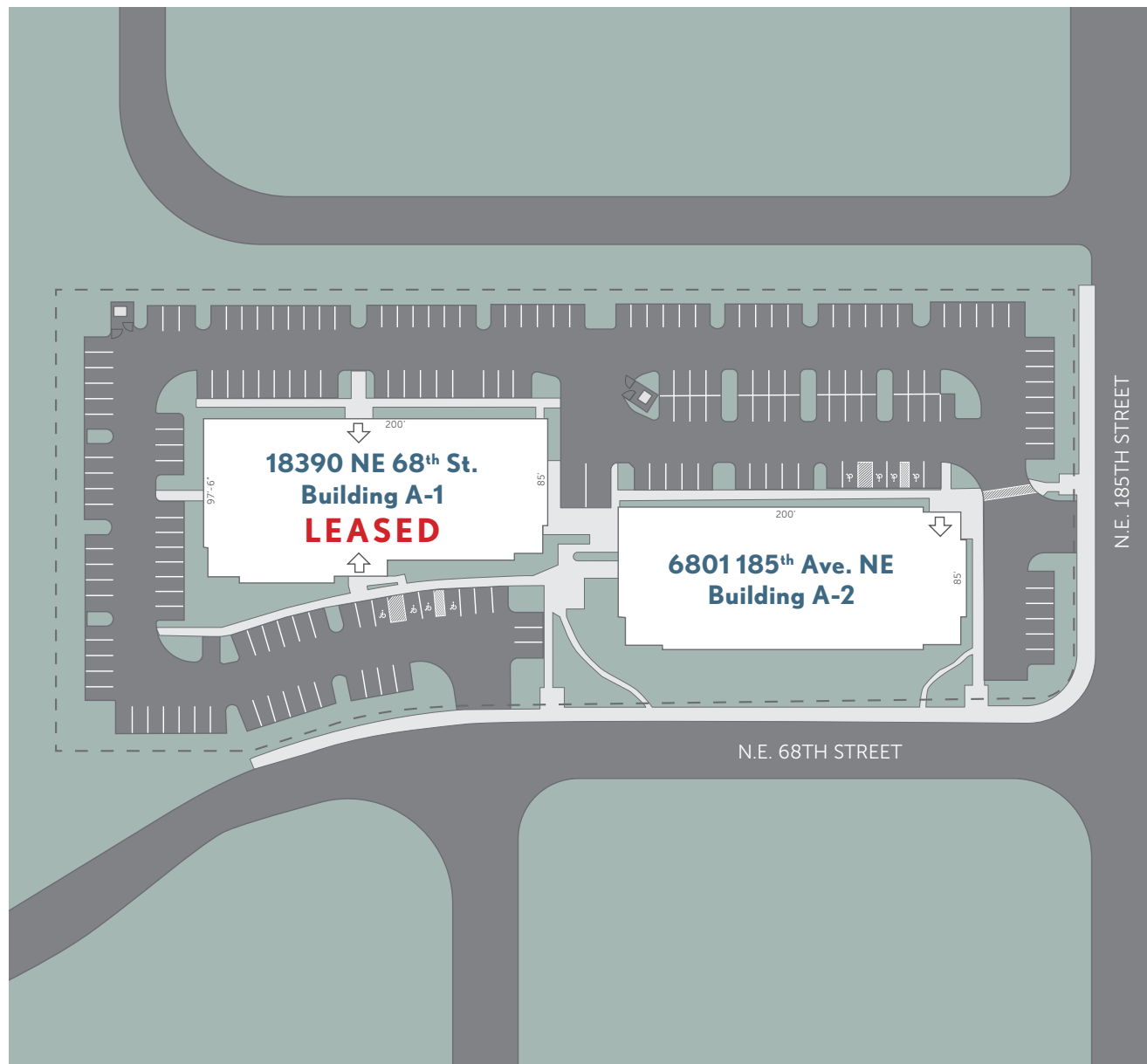


**TYLER SLONE**  
425.274.4281  
[slone@broderickgroup.com](mailto:slone@broderickgroup.com)

**PAUL JERUE**  
425.646.5223  
[jerue@broderickgroup.com](mailto:jerue@broderickgroup.com)

**ERIC MEUSSNER**  
425.274.4282  
[meussner@broderickgroup.com](mailto:meussner@broderickgroup.com)

## SITE PLAN



*The information contained herein has been given to us by the owner or sources that we deem reliable. We have no reason to doubt its accuracy, but we do not guarantee it. Prospective tenants should carefully verify all information contained herein.*



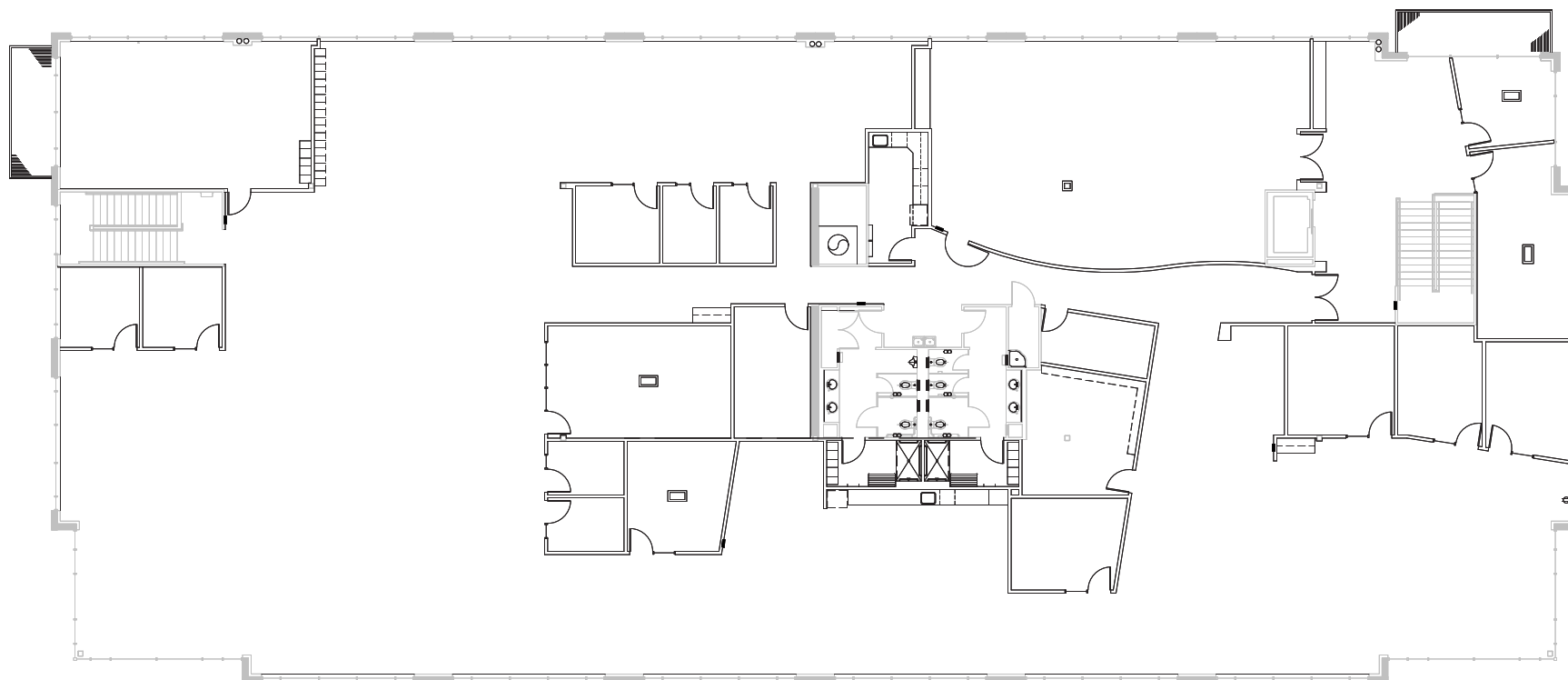
REDMOND, WA

# BUILDING A-2

6801 185<sup>th</sup> Ave. NE

**SECOND FLOOR: 16,681 RSF**

- Available Now



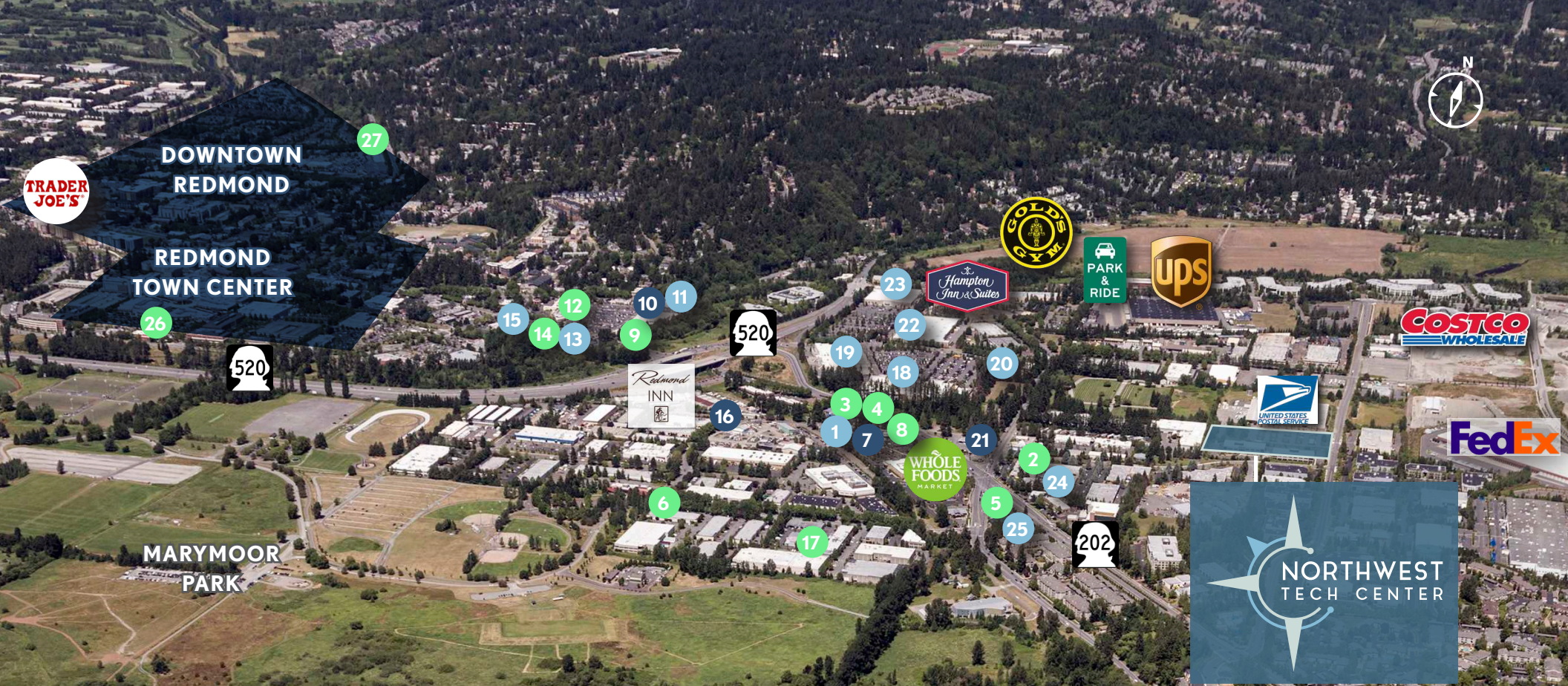
**TYLER SLONE**  
425.274.4281  
slone@broderickgroup.com

**PAUL JERUE**  
425.646.5223  
jerue@broderickgroup.com

**ERIC MEUSSNER**  
425.274.4282  
meussner@broderickgroup.com

*The information contained herein has been given to us by the owner or sources that we deem reliable. We have no reason to doubt its accuracy, but we do not guarantee it. Prospective tenants should carefully verify all information contained herein.*





## AMENITIES

COFFEE  
SERVICE  
FOOD OPTION

- |                        |                    |                          |                                 |
|------------------------|--------------------|--------------------------|---------------------------------|
| 1. Sammamish Cleaners  | 8. Asiana Bistro   | 15. Bank of America      | 22. Target                      |
| 2. Pomegranate Bistro  | 9. Panera Bread    | 16. Blazin Bagels        | 23. Kohl's                      |
| 3. Jimmy John's        | 10. Starbucks      | 17. Mac & Jack's Brewery | 24. ZenRock Fitness             |
| 4. Chipotle            | 11. Rite-Aid       | 18. Home Depot           | 25. Redmond Kindercare          |
| 5. Subway              | 12. Agave Cocina   | 19. Fred Meyer           | 26. BJ's Restaurant & Brewhouse |
| 6. Postdoc Brewing     | 13. Baskin Robbins | 20. Discount Tire        | 27. Typhoon                     |
| 7. Peet's Coffee & Tea | 14. Fatburger      | 21. Mercurys Coffee Co.  |                                 |



# ACCESS / TRANSIT

