

FOR LEASE

PACIFIC LOGISTICS NORTH

111,411 SF (2,842 SF Office) | 109 Roy Road SE, Pacific, WA

**6% Bonus
Leasing
Commission**

**68,832 SF AVAILABLE
(1,342 SF OFFICE)**

**42,579 SF AVAILABLE
(1,500 SF OFFICE)**

NEWMARK

TAYLOR HOFF, SIOR
taylor.hoff@nrmk.com
425-362-1388

THAD MALLORY, SIOR
thad.mallory@nrmk.com
425-362-1410

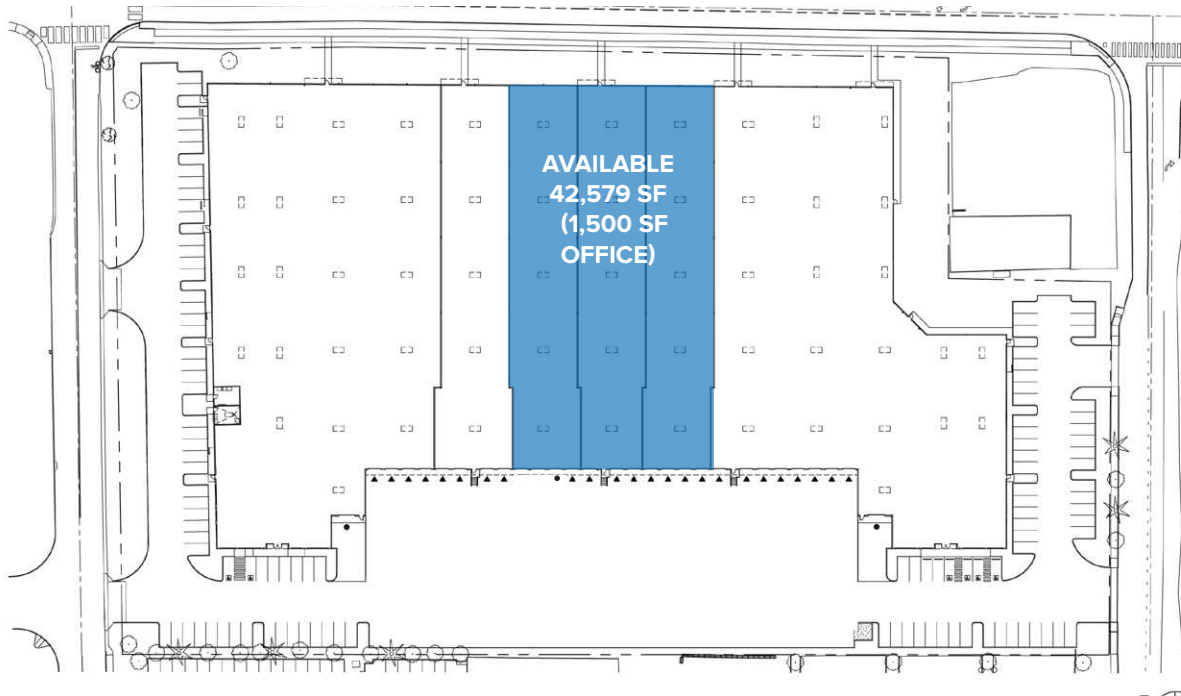
CAM WARREN
cam.warren@nrmk.com
425-362-1395

FOR LEASE

PACIFIC LOGISTICS NORTH

111,411 SF (2,842 SF Office) | 109 Roy Road SE, Pacific, WA

FLOOR PLAN | OPTION 1



- ▲ Dock High Door
- Grade Level Door

The information contained herein has been obtained from sources deemed reliable but has not been verified and no guarantee, warranty or representation, either express or implied, is made with respect to such information. Terms of sale or lease and availability are subject to change or withdrawal without notice.

BUILDING DETAILS

TOTAL SF

42,579 SF (1,500 SF Office)

CLEAR HEIGHT

30'

LOADING

8 Dock High Doors
1 Grade Level Door

RATE

\$0.85/SF shell / \$1.35/SF office add on,
plus \$0.24 NNN

PROPERTY HIGHLIGHTS

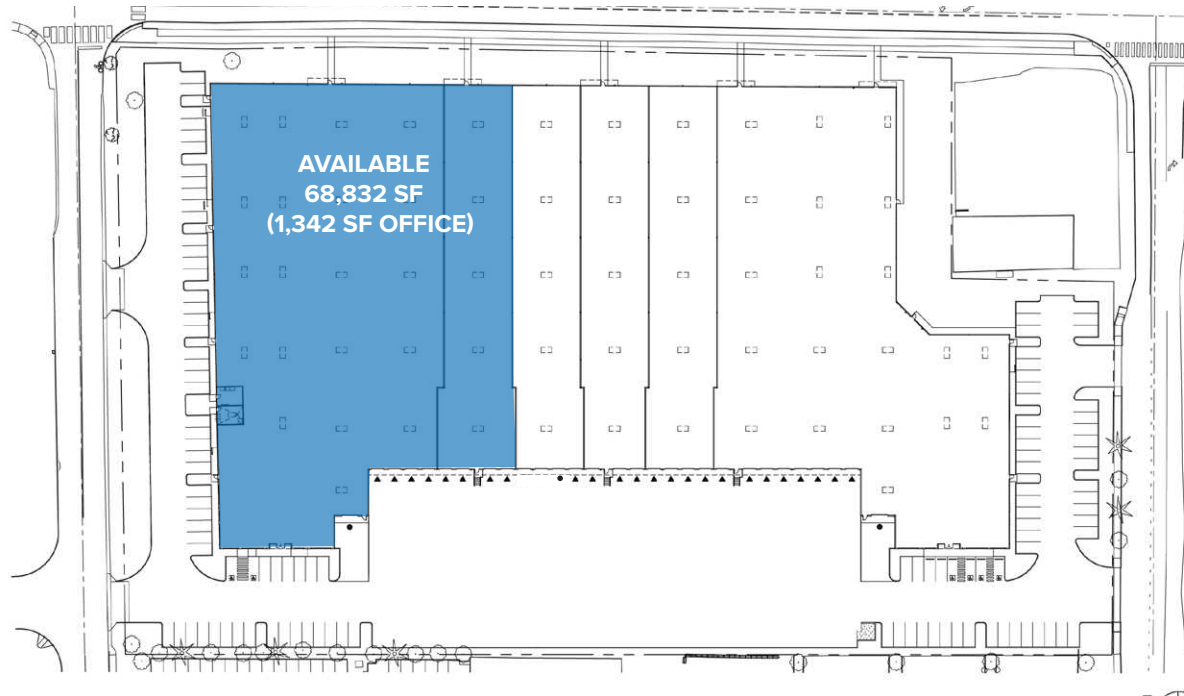
- Available Now
- Tenant to independently verify amount of power
- Immediate access to SR-167
- ESRF fire protection
- 55'x50' typical column spacing
- LED warehouse lighting

FOR LEASE

PACIFIC LOGISTICS NORTH

111,411 SF (2,842 SF Office) | 109 Roy Road SE, Pacific, WA

FLOOR PLAN | OPTION 2



- ▲ Dock High Door
- Grade Level Door

The information contained herein has been obtained from sources deemed reliable but has not been verified and no guarantee, warranty or representation, either express or implied, is made with respect to such information. Terms of sale or lease and availability are subject to change or withdrawal without notice.

BUILDING DETAILS

TOTAL SF

68,832 SF (1,342 SF Office)

CLEAR HEIGHT

30'

LOADING

8 Dock High Doors*
1 Grade Level Door

*With 35k lb pit levelers at all DH doors (5 with seals and 3 with shelters)

PROPERTY HIGHLIGHTS

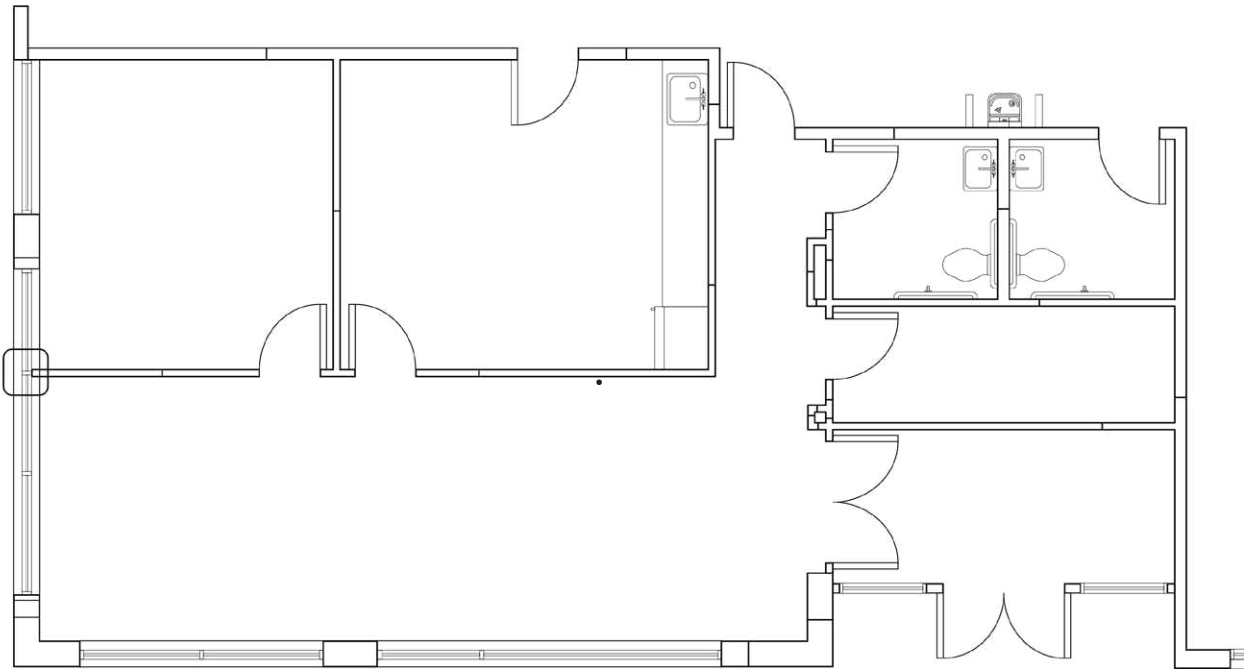
- Available Now
- Tenant to independently verify amount of power
- Immediate access to SR-167
- ESRF fire protection
- 55'x50' typical column spacing
- LED warehouse lighting

FOR LEASE

PACIFIC LOGISTICS NORTH

111,411 SF (2,842 SF Office) | 109 Roy Road SE, Pacific, WA

FLOOR PLAN | OPTION 2 OFFICE



BUILDING DETAILS

TOTAL SF

68,832 SF (1,342 SF Office)

CLEAR HEIGHT

30'

LOADING

8 Dock High Doors*

1 Grade Level Door

*With 35k lb pit levelers at all DH doors (5 with seals and 3 with shelters)

PROPERTY HIGHLIGHTS

- Available Now
- Tenant to independently verify amount of power
- Immediate access to SR-167
- ESRF fire protection
- 55'x50' typical column spacing
- LED warehouse lighting

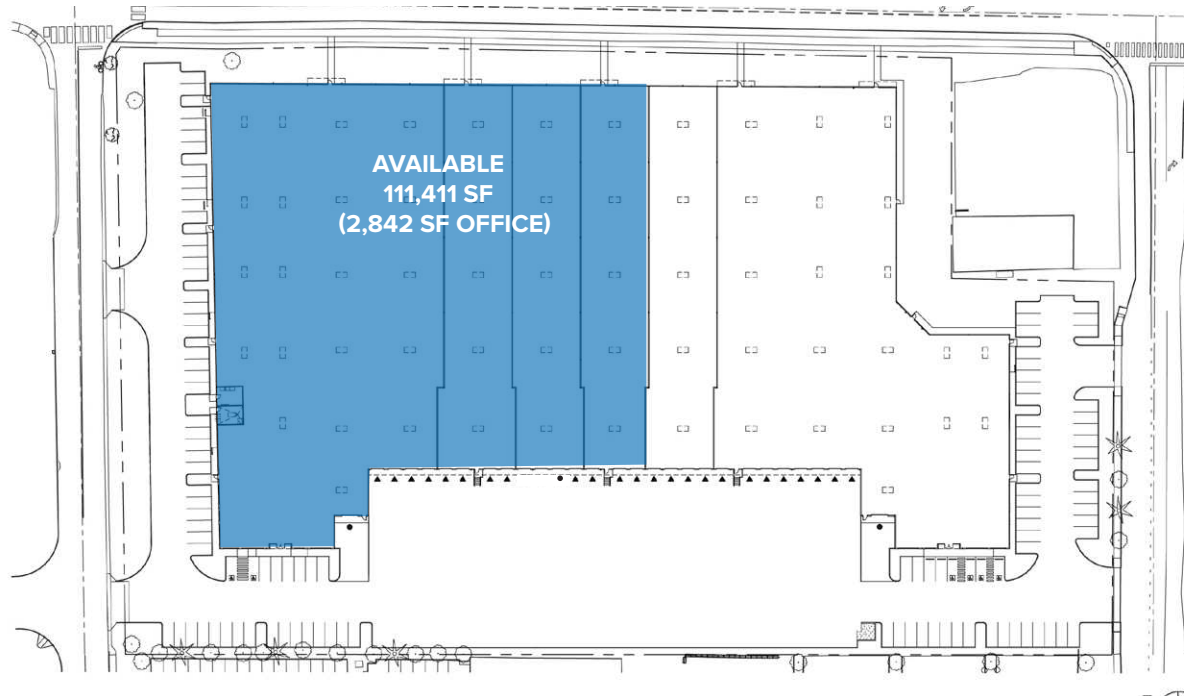
The information contained herein has been obtained from sources deemed reliable but has not been verified and no guarantee, warranty or representation, either express or implied, is made with respect to such information. Terms of sale or lease and availability are subject to change or withdrawal without notice.

FOR LEASE

PACIFIC LOGISTICS NORTH

111,411 SF (2,842 SF Office) | 109 Roy Road SE, Pacific, WA

FLOOR PLAN | OPTION 3



- ▲ Dock High Door
- Grade Level Door

The information contained herein has been obtained from sources deemed reliable but has not been verified and no guarantee, warranty or representation, either express or implied, is made with respect to such information. Terms of sale or lease and availability are subject to change or withdrawal without notice.

BUILDING DETAILS

TOTAL SF

111,411 SF (2,842 SF Office)

CLEAR HEIGHT

30'

LOADING

16 Dock High Doors*
2 Grade Level Door

*8 with 35k lb pit levelers (5 with seals and 6 with shelters)

PROPERTY HIGHLIGHTS

- Available Now
- Tenant to independently verify amount of power
- Immediate access to SR-167
- ESRF fire protection
- 55'x50' typical column spacing
- LED warehouse lighting