

APPROX 23,381 RSF OFFICE/WAREHOUSE

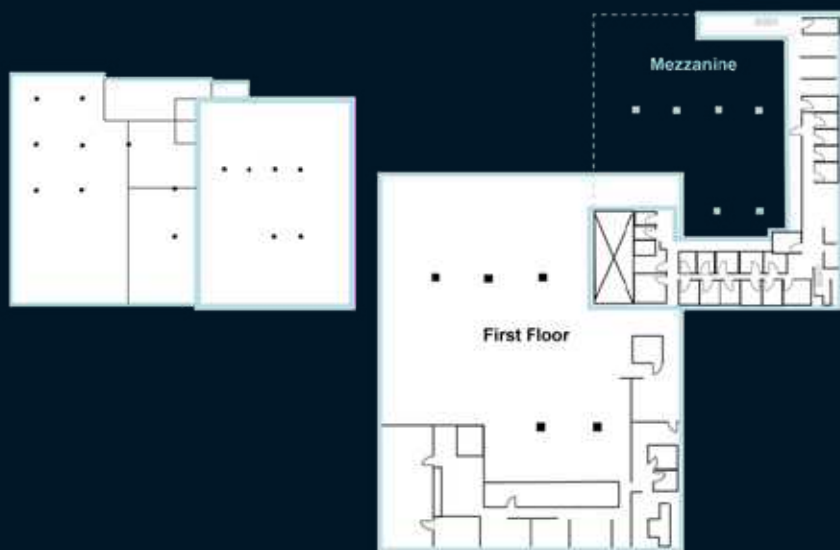


SUBLEASE OPPORTUNITY

100 Parmac Building

11155 120th Avenue NE
Kirkland, WA





Property Highlights

- Approximately 23,381 SF Total
- 14,417 RSF of high bay warehouse
- 8,669 SF of two-story office space
- 24' Clear Height
- Dock and grade level loading
- Master lease expires 6/30/2027
- Parking: 1.5/1,000 SF
- Available with 30 days' notice
- Excellent Hwy access (I-405) Call broker for rates



Chris Spofford

Executive Managing Director

+1 425 890 6961

chris.spofford@jll.com