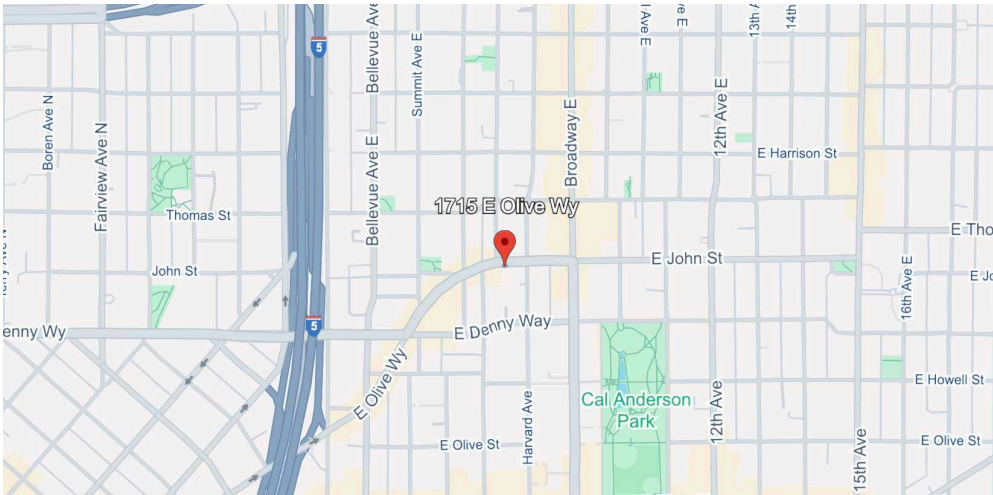
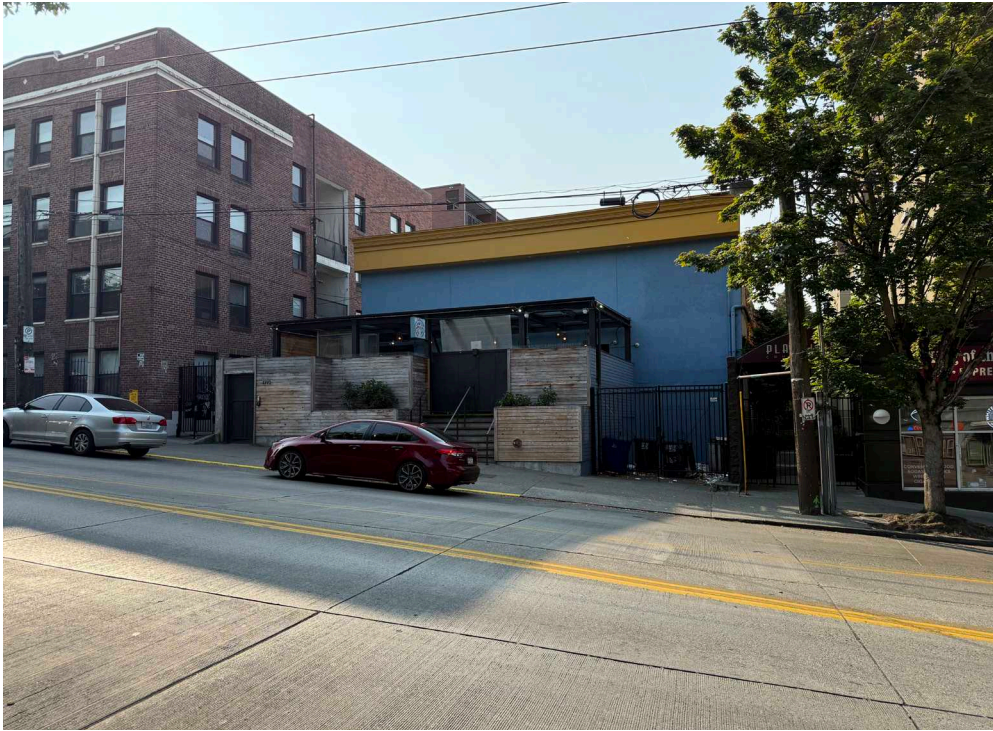


FOR LEASE

CAPITOL HILL STORAGE
1715 E OLIVE WY | SEATTLE | 98102



PROPERTY FEATURES

- 7,000SF of secure storage space in Capitol Hill
- Demising options between 3,500-7,000SF
- Fully secured space located beneath renowned Montessori school
- Heated and dry space
- Ready for occupancy October 1
- \$12/SF/YR gross



**ANDY
RANDLES**

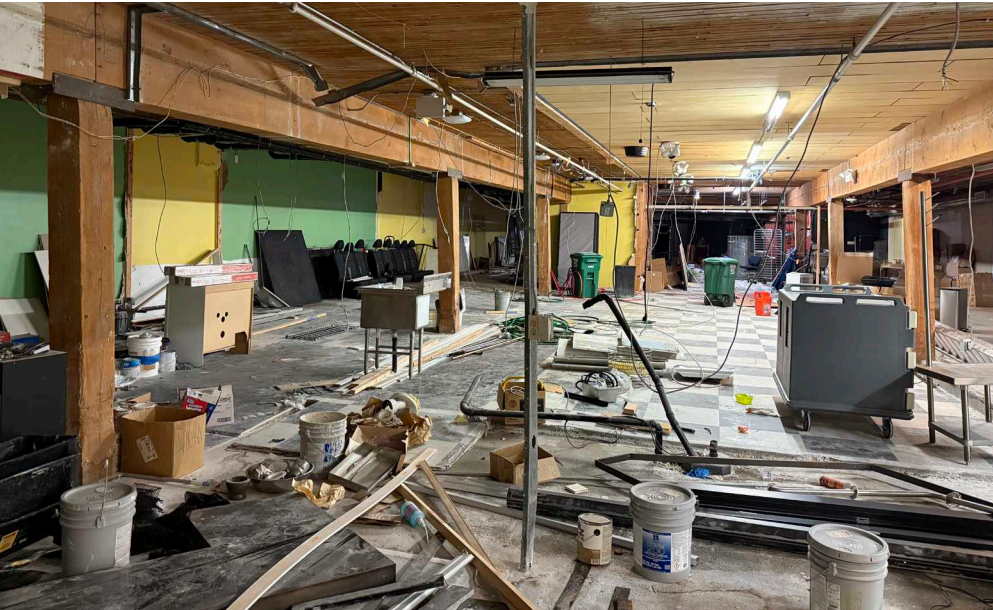
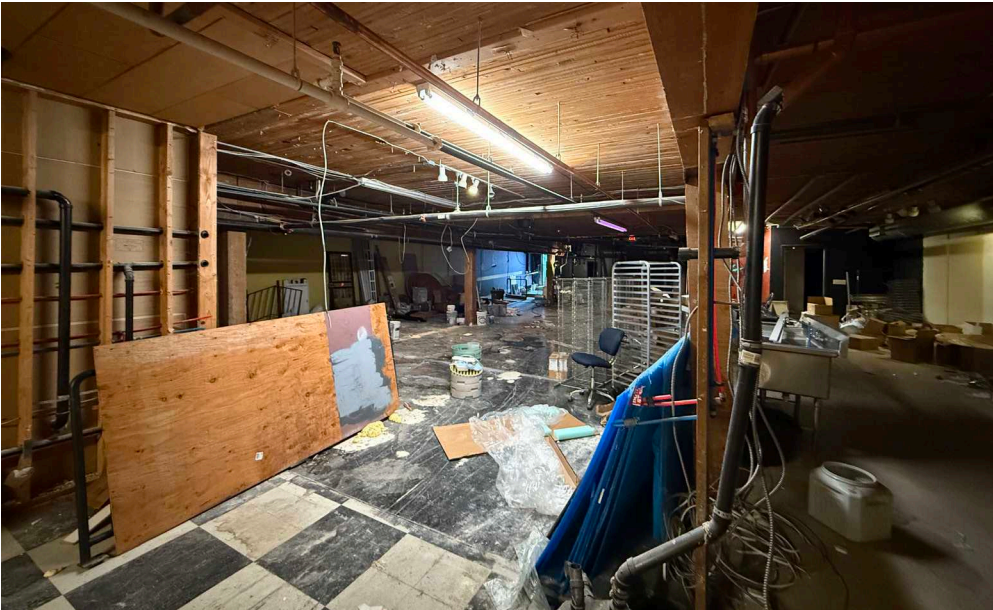
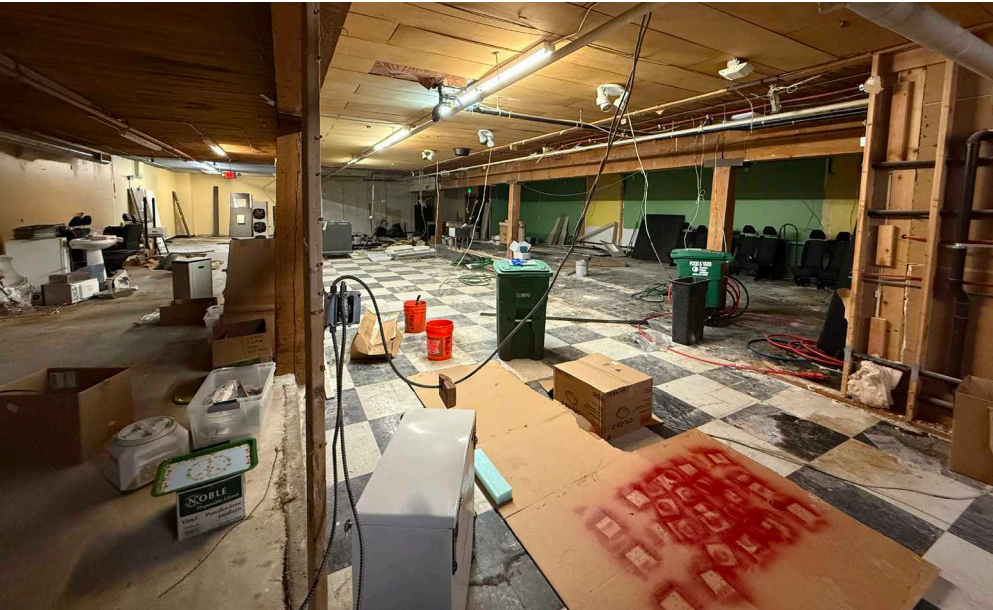
206.405.0090
andy@ewingandclark.com

**TOM
GRAFF**

206.295.1445
tomgraff@ewingandclark.com

INTERIOR SHOTS

1715 E OLIVE WY | SEATTLE | 98102

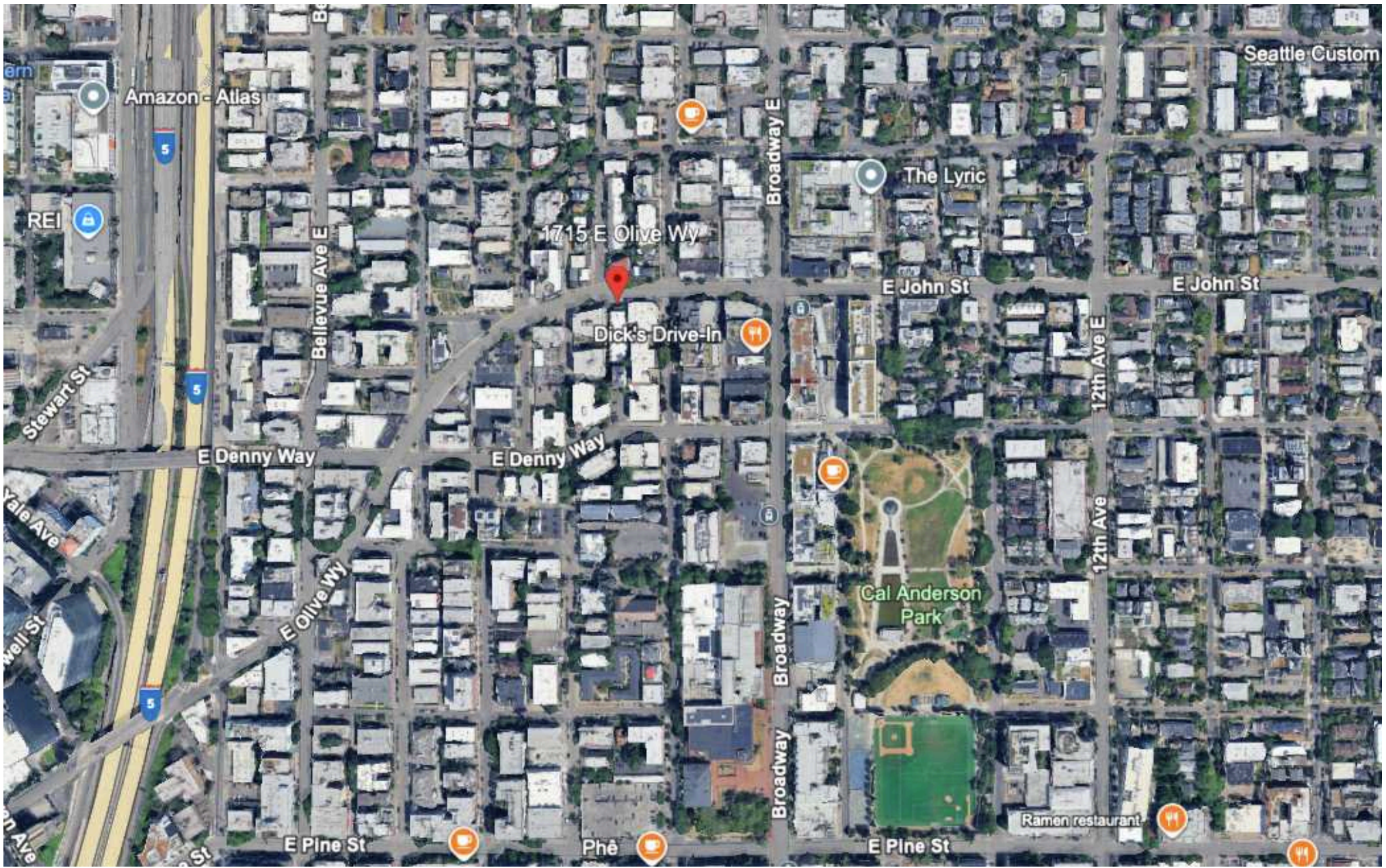


ANDY RANGLES | 206.405.0090
andy@ewingandclark.com

TOM GRAFF | 206.295.1445
tomgraff@ewingandclark.com

AERIAL MAP

1715 E OLIVE WY | SEATTLE | 98102



ANDY RANGLES | 206.405.0090
andy@ewingandclark.com

TOM GRAFF | 206.295.1445
tomgraff@ewingandclark.com