

# LEASE

## MARTIN WAY PROFESSIONAL PLAZA

3905 Martin Way E Olympia, WA 98506



### OFFERING SUMMARY

Lease Rate:	\$12 SF/yr
Lease Type:	Modified Gross (MG)
Building Size:	9,600 SF
Suites A SF:	4,095 SF
Lot Size:	0.81 Acres
Year Built:	1988

### PROPERTY OVERVIEW

Professional office building close to amenities. Easy access to I-5 and downtown Olympia and Lacey. Plenty of parking in front and rear of building.

### PROPERTY HIGHLIGHTS

- 9 Mostly Furnished Private Offices
- 2 Kitchen Areas
- Conference Space
- Copy Center Space
- Extra Cubicles
- Office Storage (under stairs)
- Private Mezzanine
- Use of the Main Backlit Monument Sign on Martin Way

**Jason Hearn**  
(360) 701-3490  
jason.hearn@coldwellbankercommercialdanforth.com

**Bob Fredrickson, CCIM**  
(206) 595-7232  
bfredrickson@cbcworldwide.com



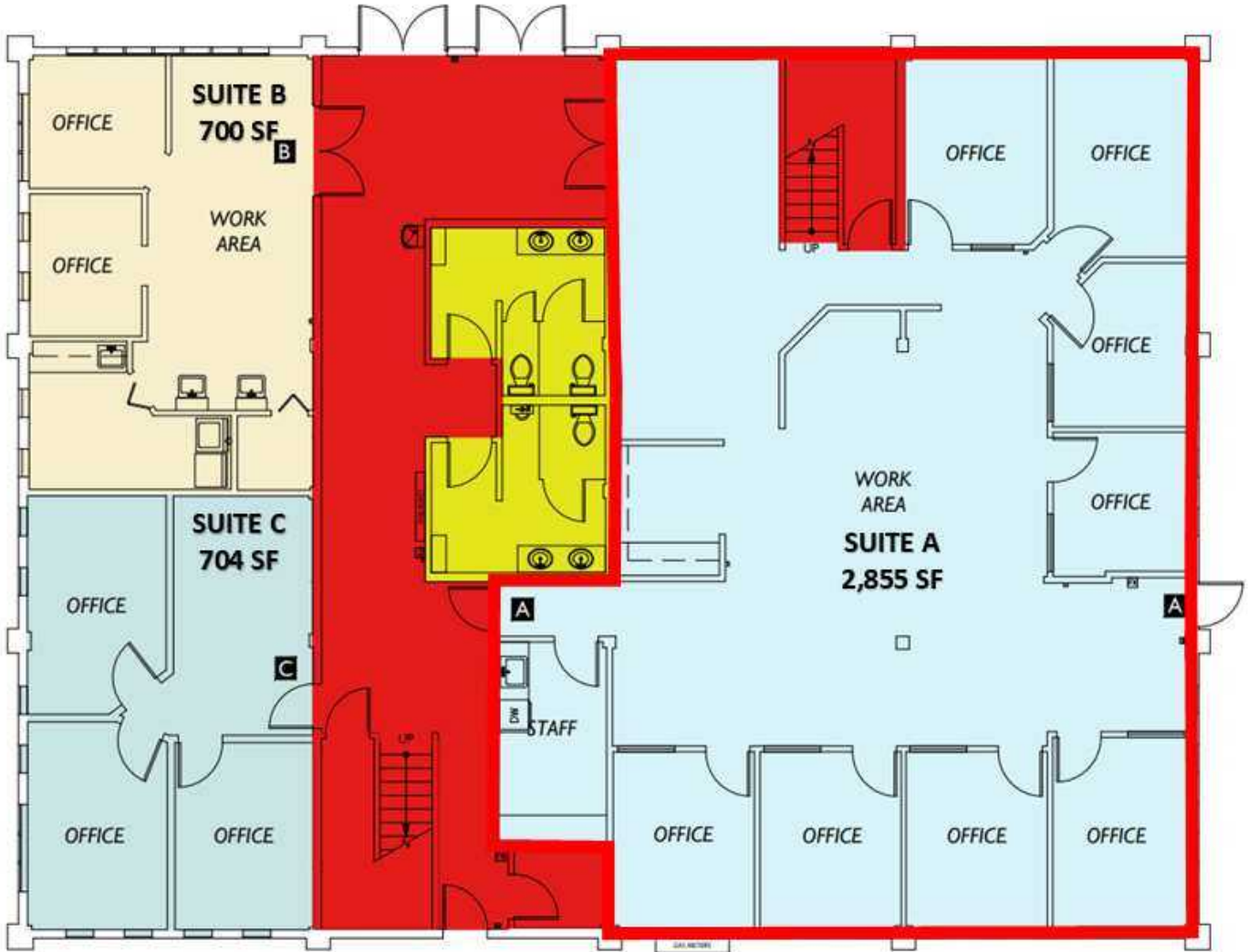
**COLDWELL BANKER  
COMMERCIAL**  
DANFORTH

# LEASE

## MARTIN WAY PROFESSIONAL PLAZA

3905 Martin Way E Olympia, WA 98506

# Floor 1



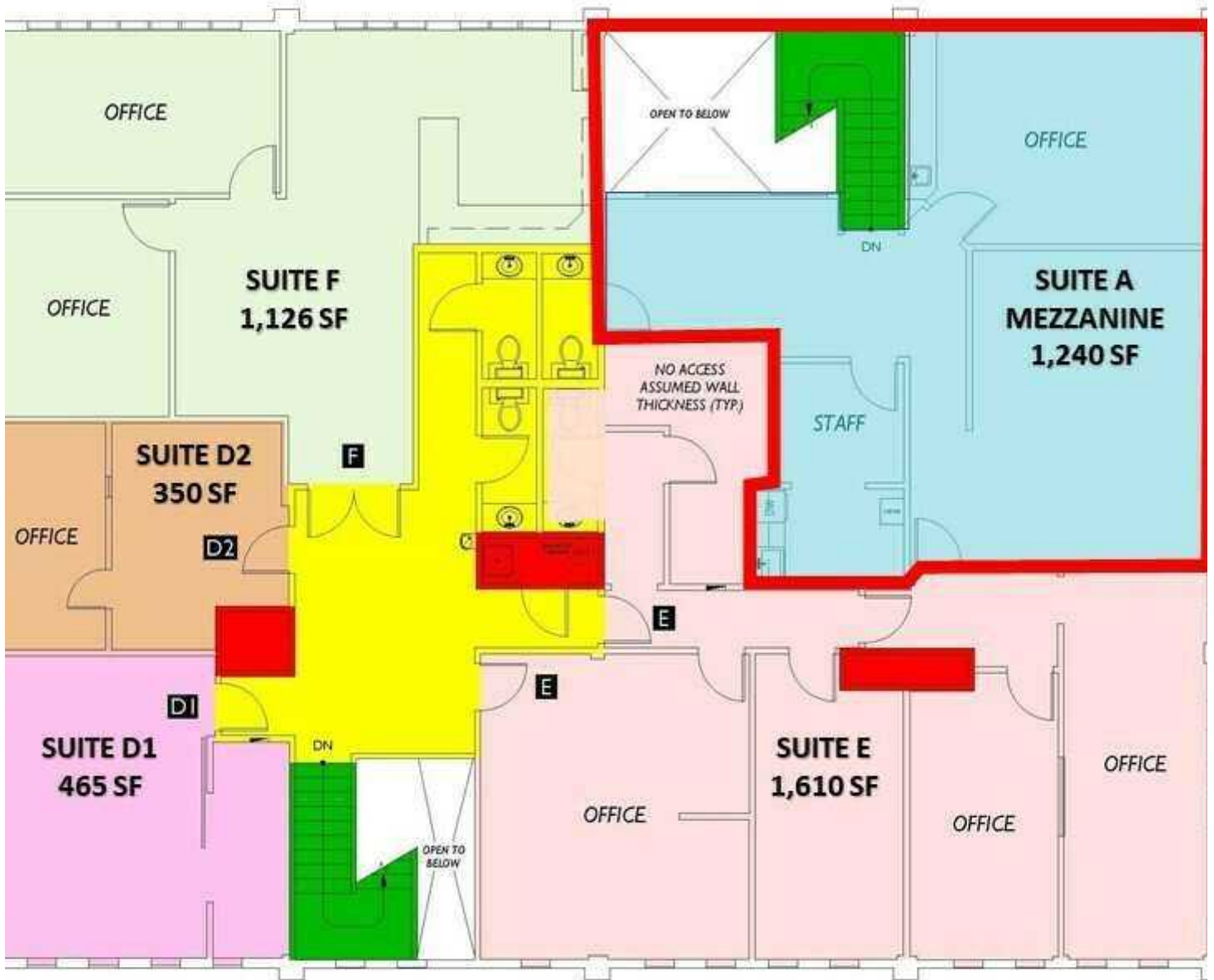
**Jason Hearn**  
(360) 701-3490  
jason.hearn@coldwellbankercommercialdanforth.com

**Bob Fredrickson, CCIM**  
(206) 595-7232  
bfredrickson@cbcworldwide.com



**COLDWELL BANKER  
COMMERCIAL**  
DANFORTH

# Floor 2



**Jason Hearn**  
(360) 701-3490  
jason.hearn@coldwellbankercommercialdanforth.com

**Bob Fredrickson, CCIM**  
(206) 595-7232  
bfredrickson@cbcworldwide.com

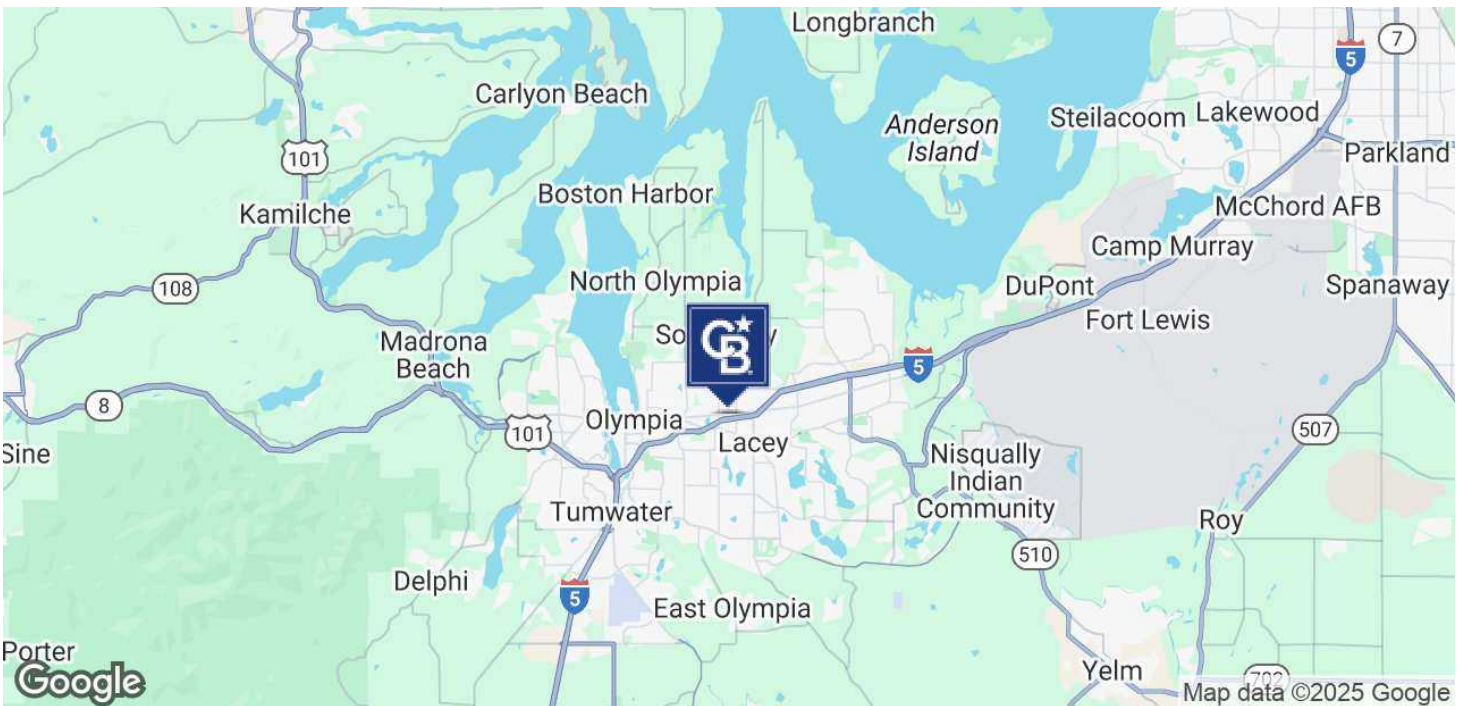


**COLDWELL BANKER  
COMMERCIAL**  
DANFORTH

# LEASE

## MARTIN WAY PROFESSIONAL PLAZA

3905 Martin Way E Olympia, WA 98506



**Jason Hearn**  
(360) 701-3490  
jason.hearn@coldwellbankercommercialdanforth.com

**Bob Fredrickson, CCIM**  
(206) 595-7232  
bfredrickson@cbcworldwide.com



**COLDWELL BANKER  
COMMERCIAL**  
DANFORTH