



MILLENNIUM TOWER

nuveen

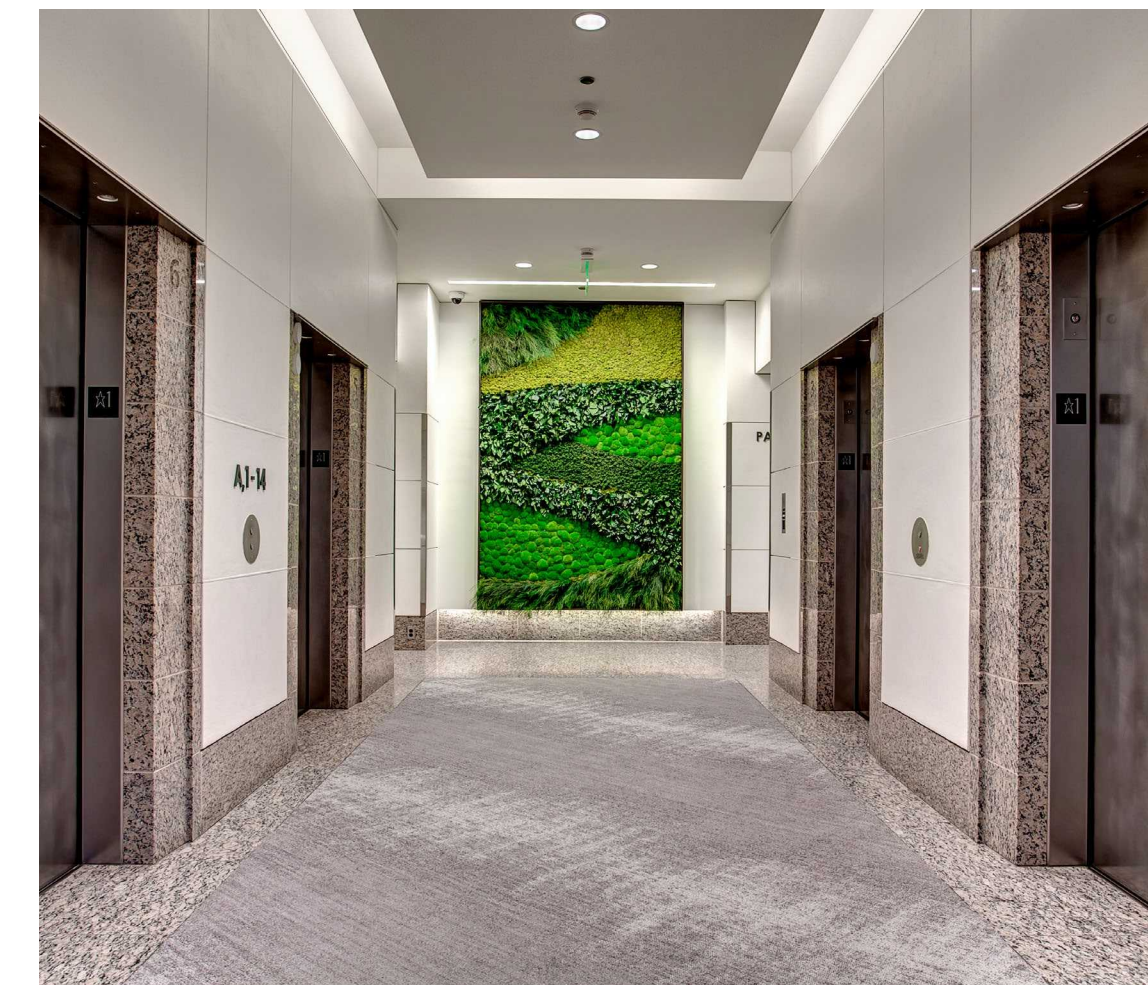
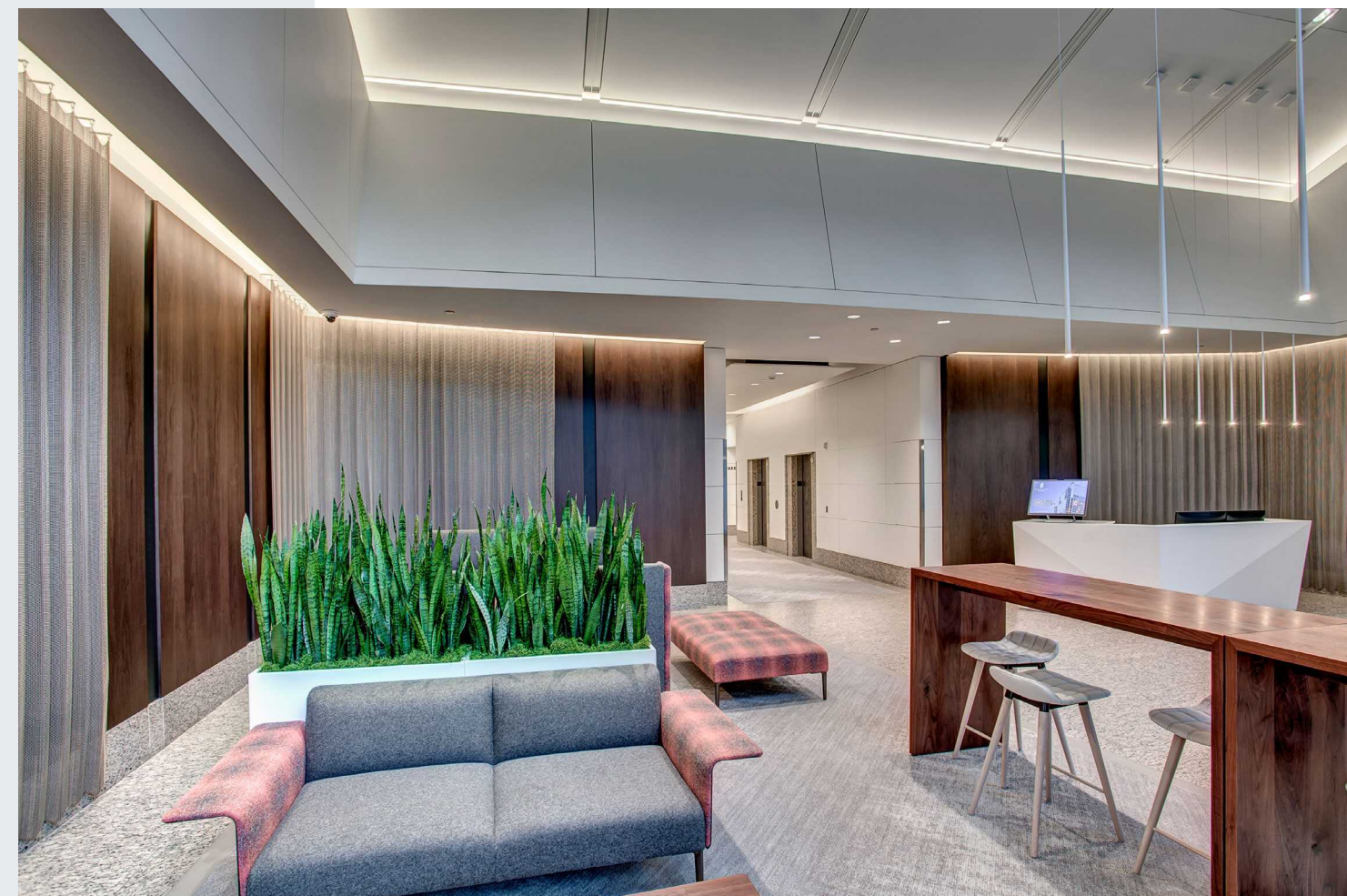
elevated

ON ALL LEVELS

newly modified lobby lounge

MODERN MEETS ELEGANCE

The newly modified Millennium Tower lobby lounge greets you and your guests with natural light and multiple seating options for intimate conversations or simply catching up on a bit of email. Fresh wall accents surround the seating areas for modern elegance, while a moss wall in the elevator bay is like a window to passages throughout the Pacific Northwest. The modern and ample space with visible 24-hour security personnel is the perfect spot to arrange a meeting point for your small group, or settle into one of the cozy seating vignettes with soft textiles for taking a breather after a long day.



gallery



available space

FLOOR	SIZE	AVAILABILITY	VIRTUAL TOURS
1ST FLOOR	1,997 - 5,469 RSF	Available Now	
3RD FLOOR	19,125 RSF	Available Now	
4TH FLOOR	2,580 RSF	Available Now	
5TH FLOOR	8,995 RSF	Available Now	
6TH FLOOR	3,356 - 10,533 RSF	Available Now	
7TH FLOOR	9,571 RSF (divisible to 2,500 RSF)	Available Now	
8TH FLOOR	11,841 RSF	Available Now	
9TH FLOOR	14,692 RSF	November 1, 2025	
10TH FLOOR*	4,803 RSF	Available Now	
11TH FLOOR*	14,745 RSF	Available Now	
12TH FLOOR	2,409 RSF	Available Now	
13TH FLOOR**	14,692 RSF	Available Now	
14TH FLOOR**	14,715 RSF (divisible to 3,356 RSF)	Available Now	

*10th & 11th Contiguous 19,548 RSF

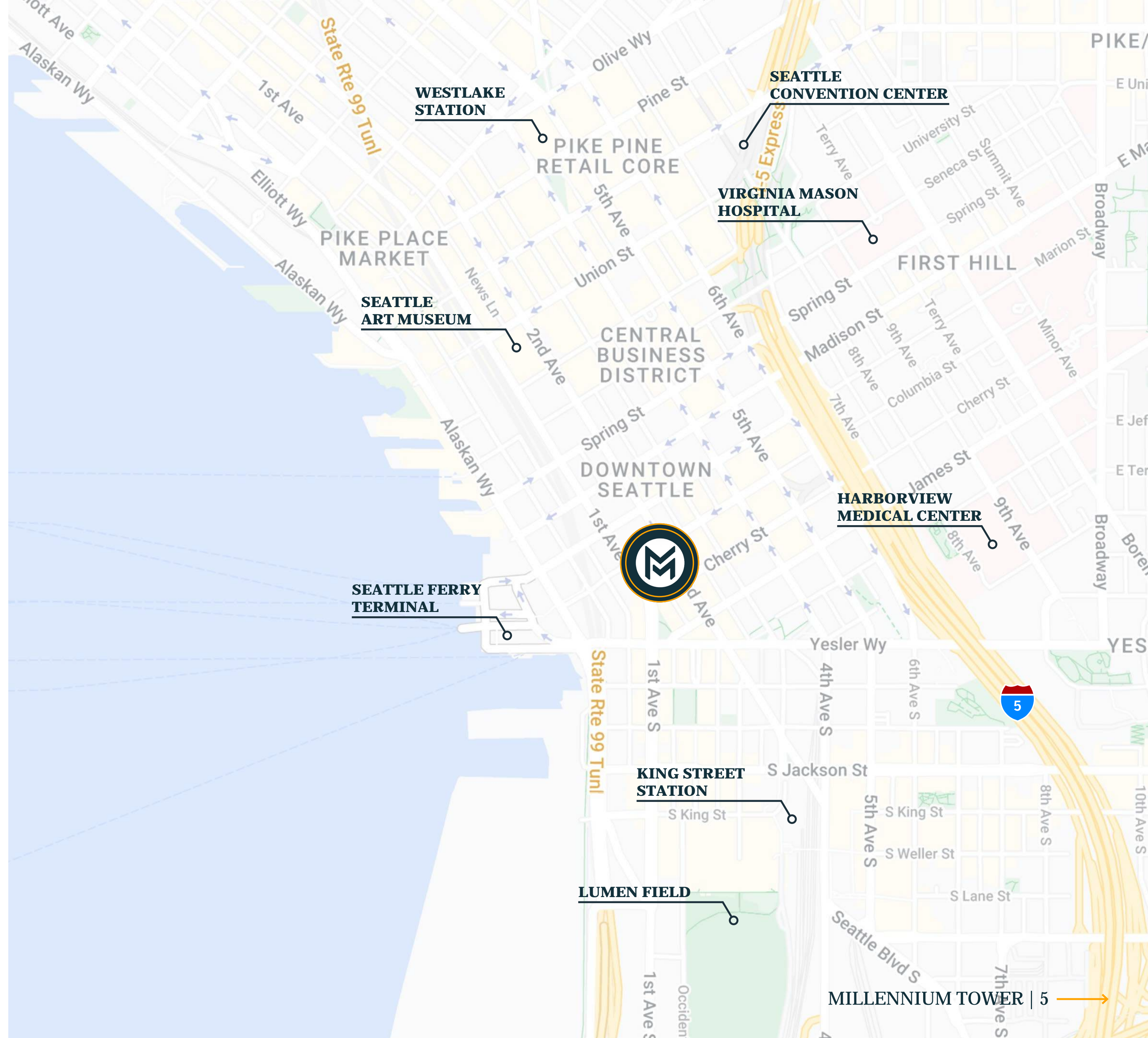
**13th & 14th Contiguous 29,407 RSF



location

the hub of opportunity

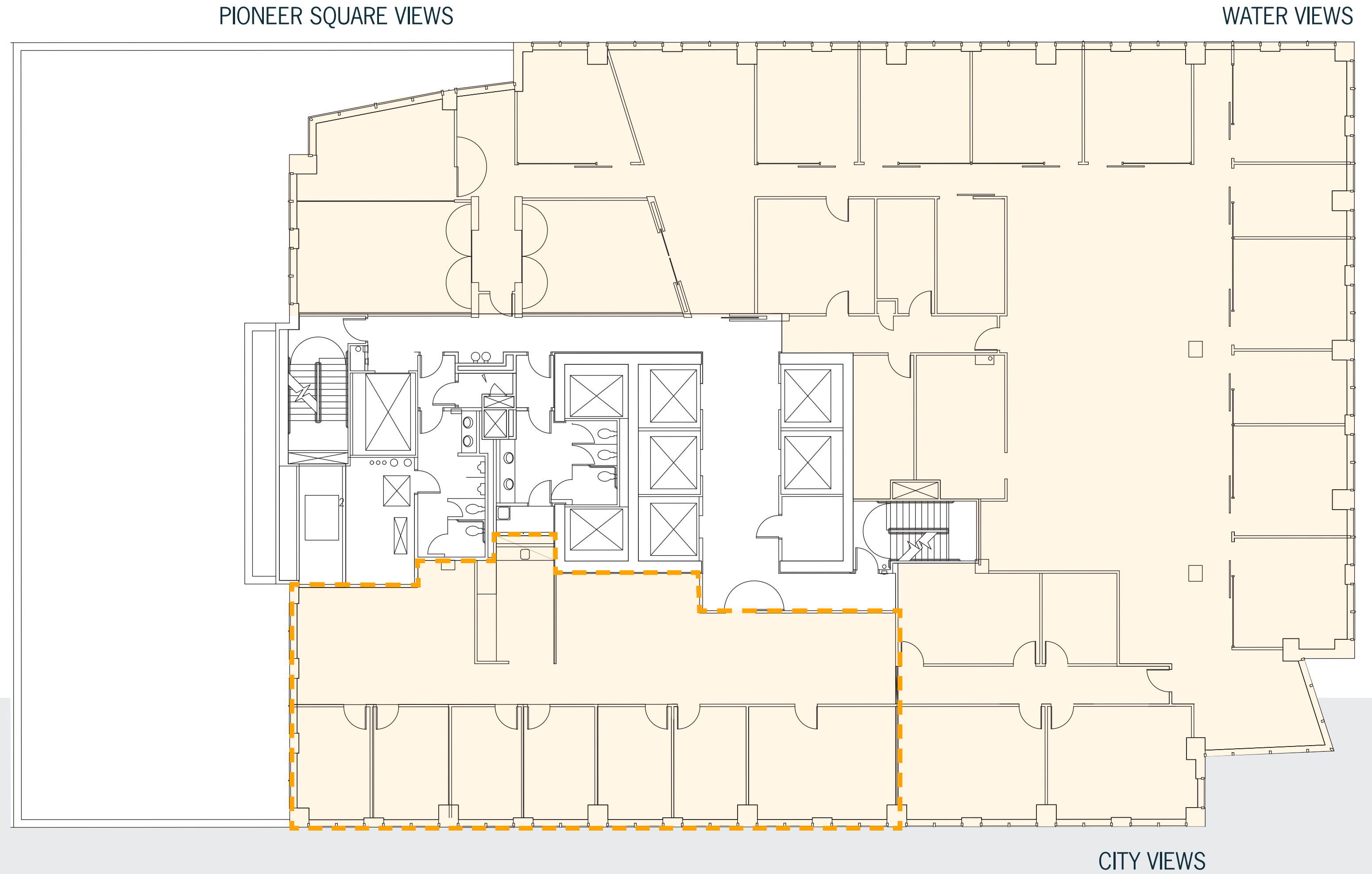
- Class A office building with efficient floor plates located in Seattle Central Business District
- Within walking distance to the new Seattle waterfront and Pioneer Square
- Close proximity to Metro buses, Link light rail and Colman Ferry Terminal and Water Taxi
- New Seattle Waterfront currently under construction
- Ideal building for traditional and technology office users
- Building shower facilities with lockers
- Floor to ceiling glass in SW and NE corners
- Large landscaped deck exclusively for tenant use with seating and WiFi
- Parking ratio of 1/1,000 RSF in building garage with two secure bike storage locations
- HqO Tenant App for employee engagement



14TH FLOOR | SUITE 1400

14,715 RSF

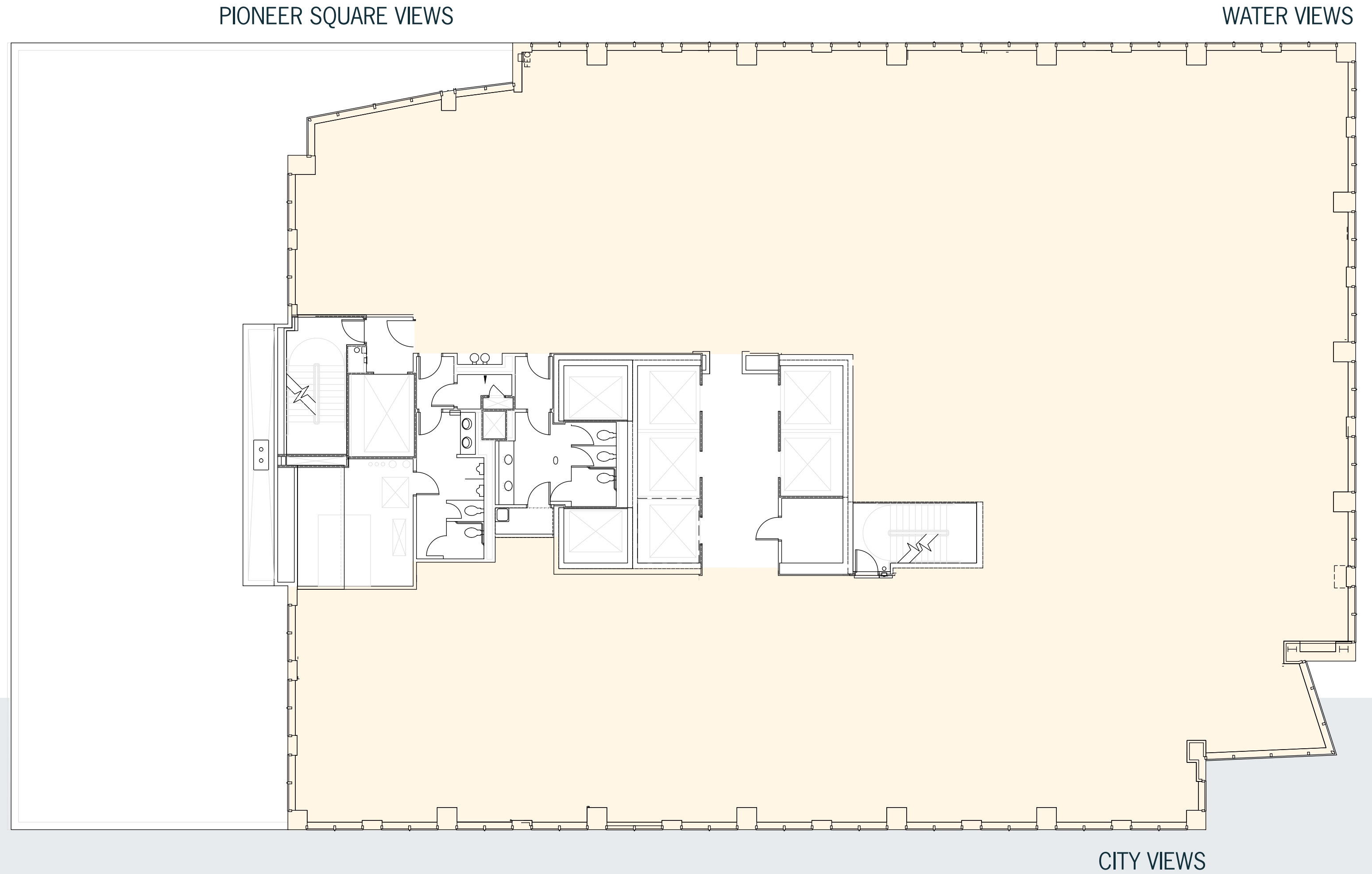
- Available now
- Divisible to 3,355 RSF (SE corner)
- Full floor



13TH FLOOR | SUITE 1300

14,692 RSF

- Available now
- Market ready condition
- Full floor

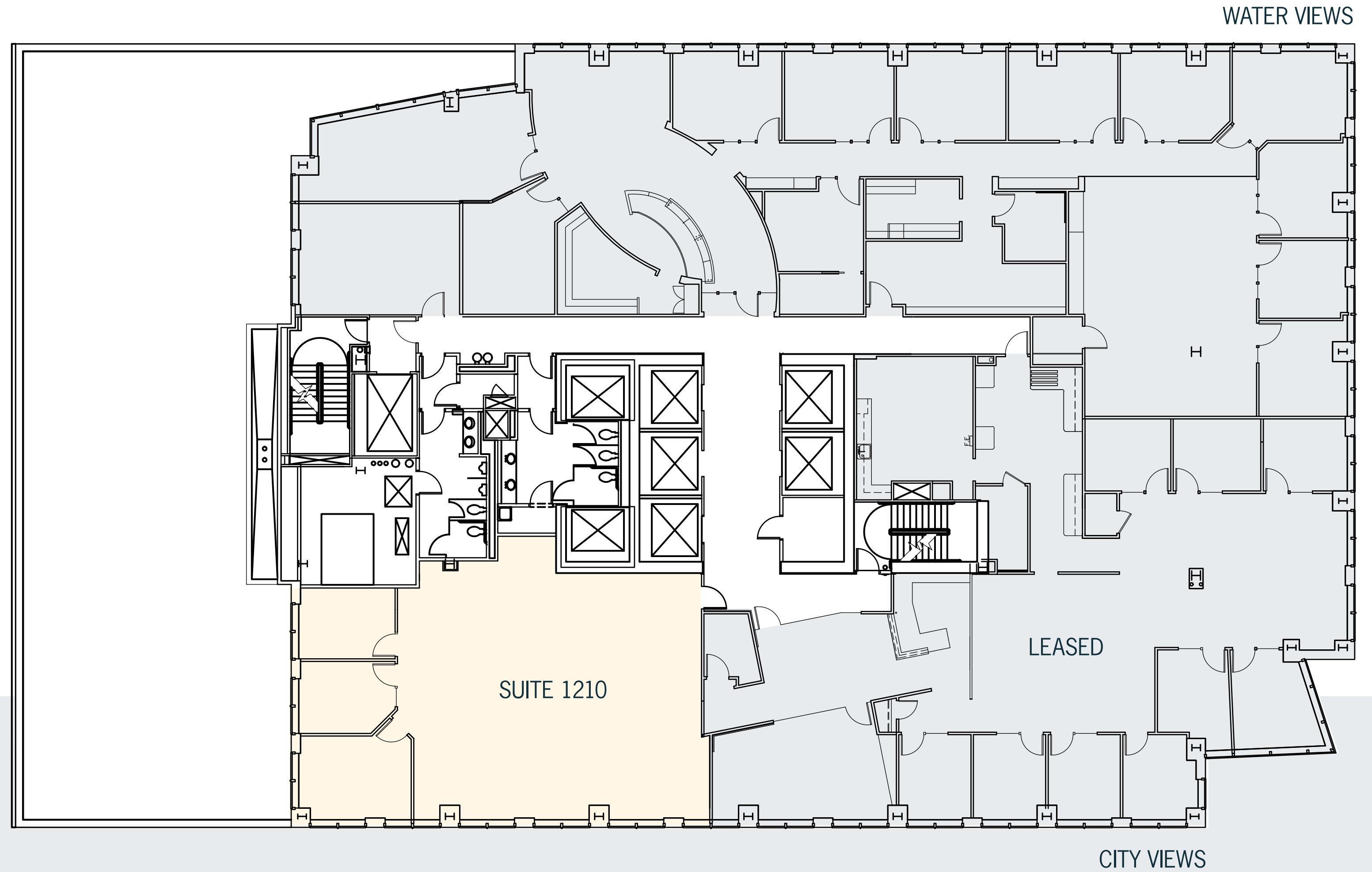


12TH FLOOR | SUITE 1210

2,409 RSF

-Available now

SUITE 1210 VIRTUAL TOUR



CITY VIEWS

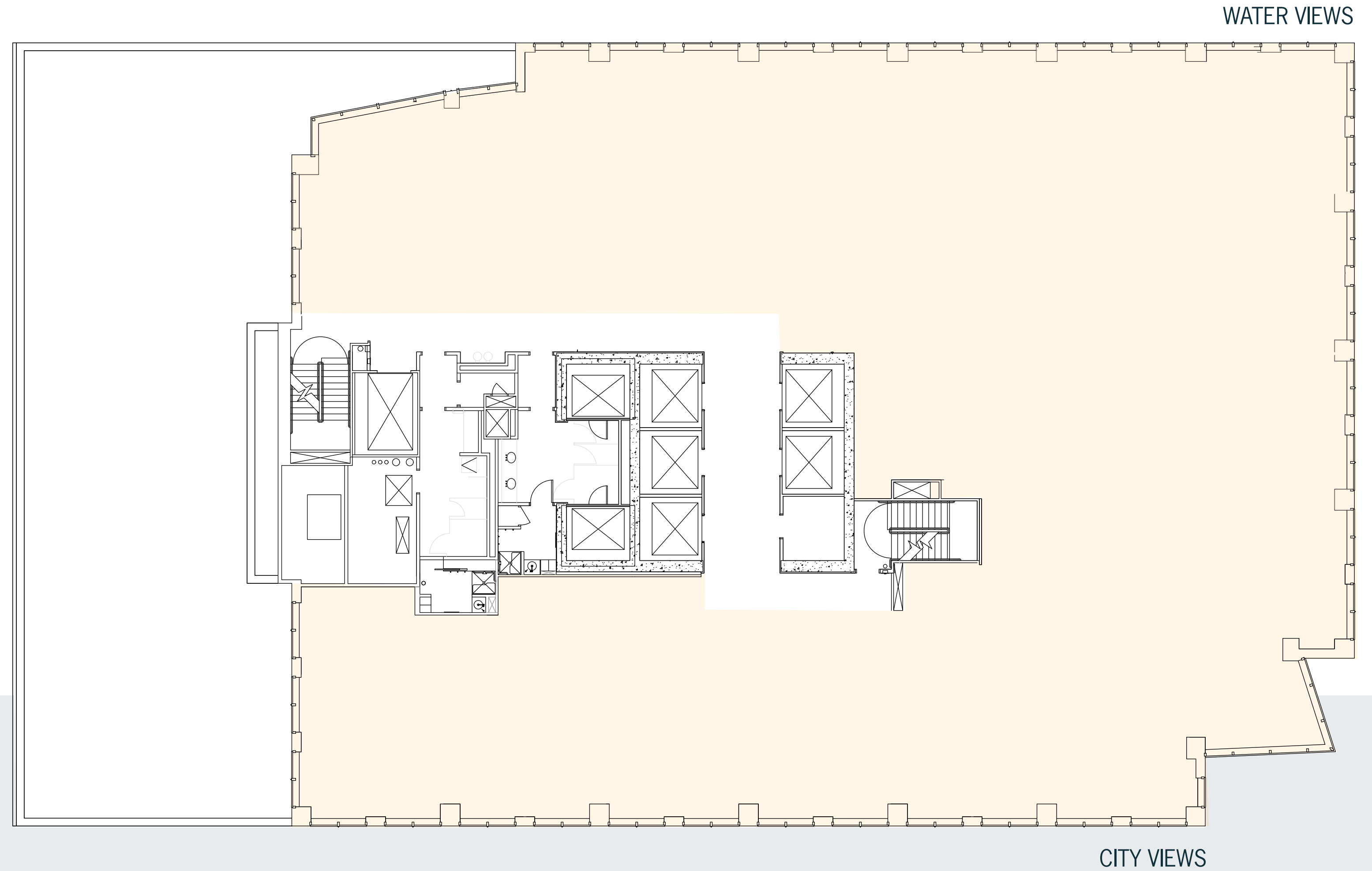
WATER VIEWS



11TH FLOOR | SUITE 1100

14,745 RSF

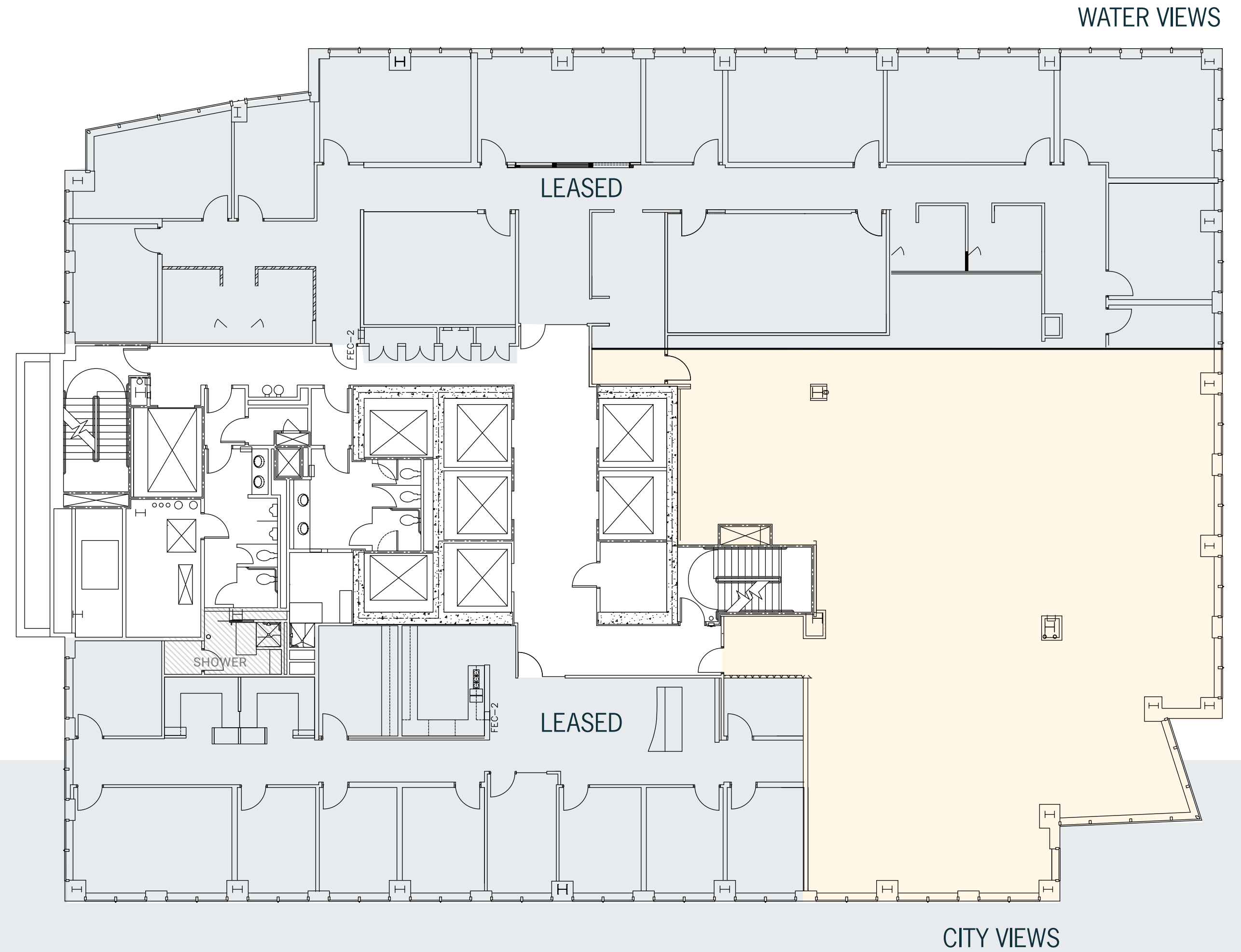
-Available now



10TH FLOOR | SUITE 1075

4,803 RSF

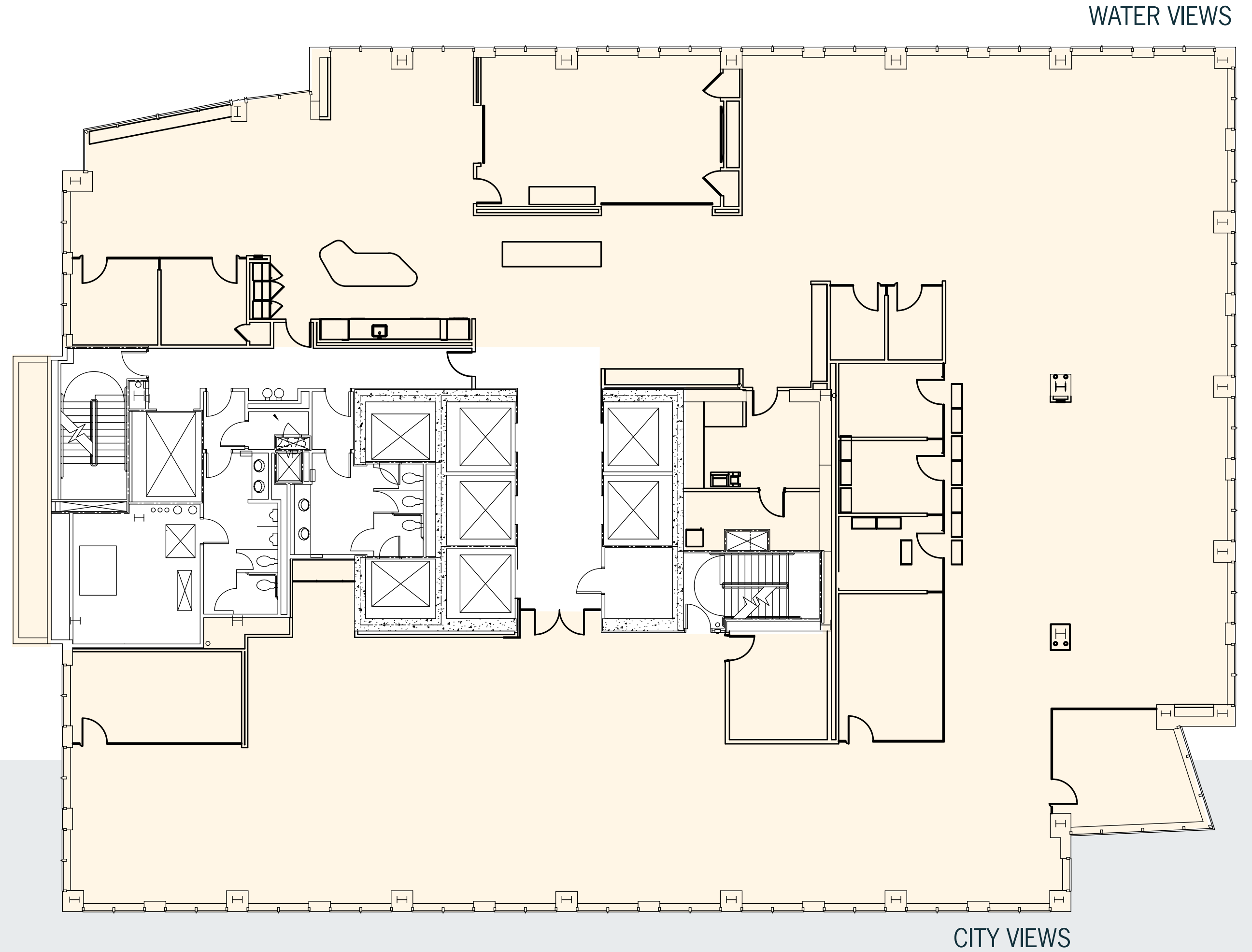
- Available now
- Warm shell space
- Shower on floor



9TH FLOOR | SUITE 900

14,692 RSF

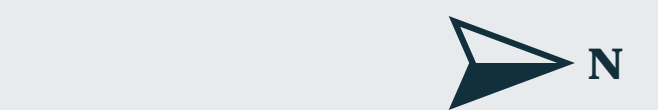
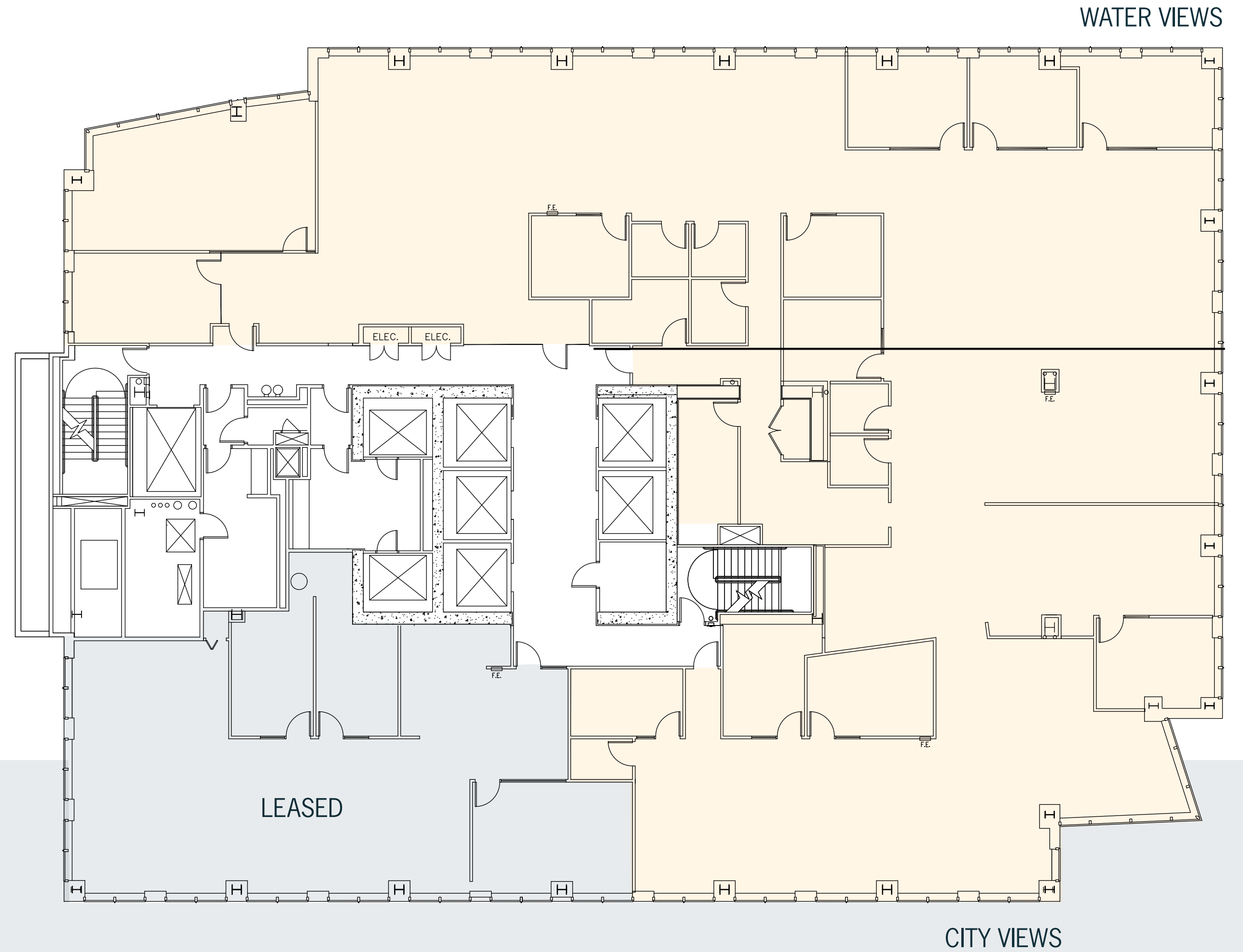
- Available November 1, 2025
- Plug & play
- Exposed ceiling



8TH FLOOR | SUITE 800

11,841 RSF

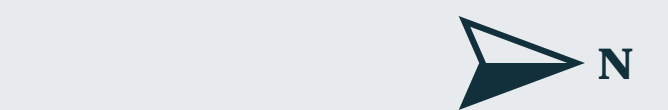
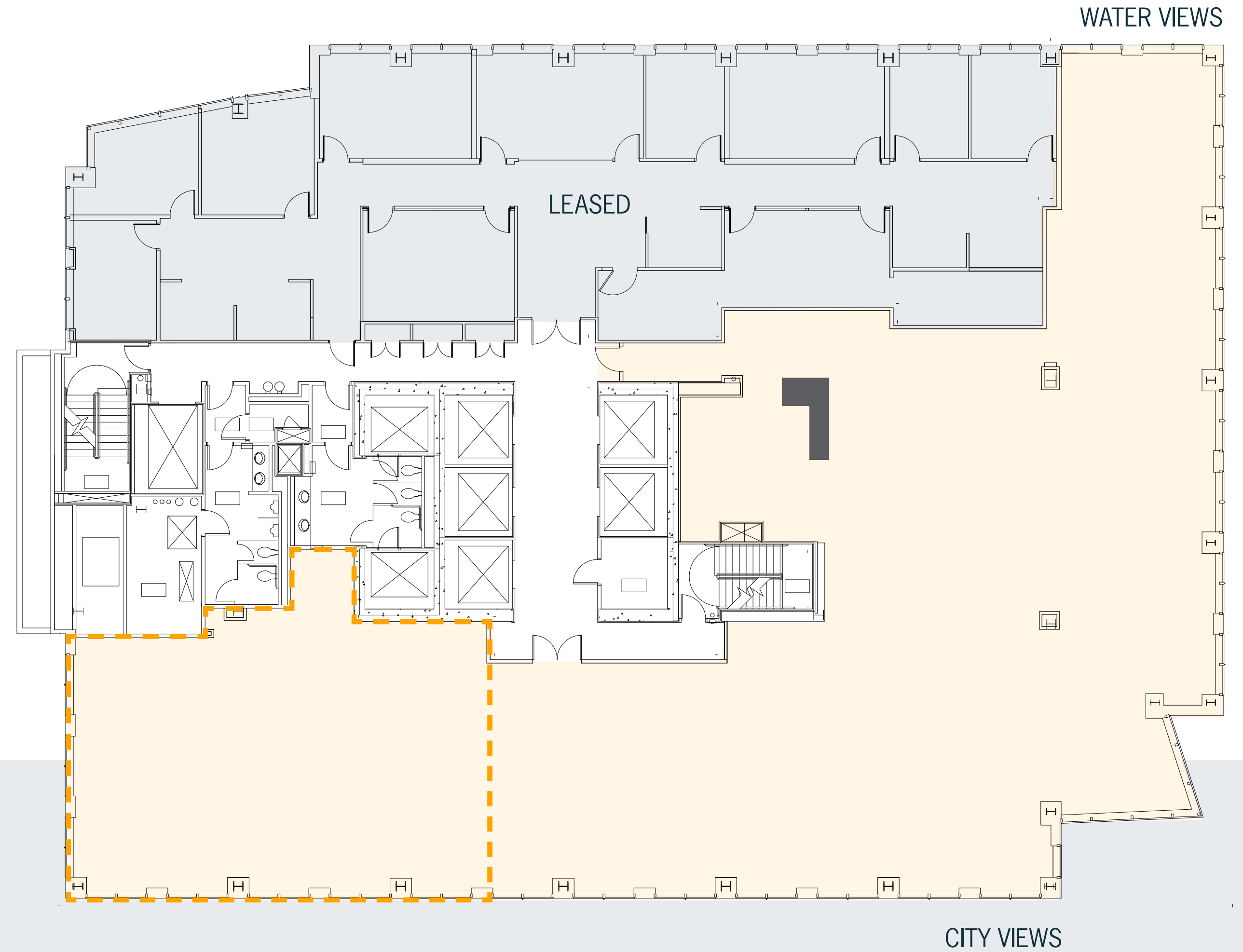
-Available now



7TH FLOOR | SUITE 701

9,571 RSF

- Available now
- Divisible to 2,500 RSF (SE corner)
- Shell space



f floor plans

6TH FLOOR | SUITE 650

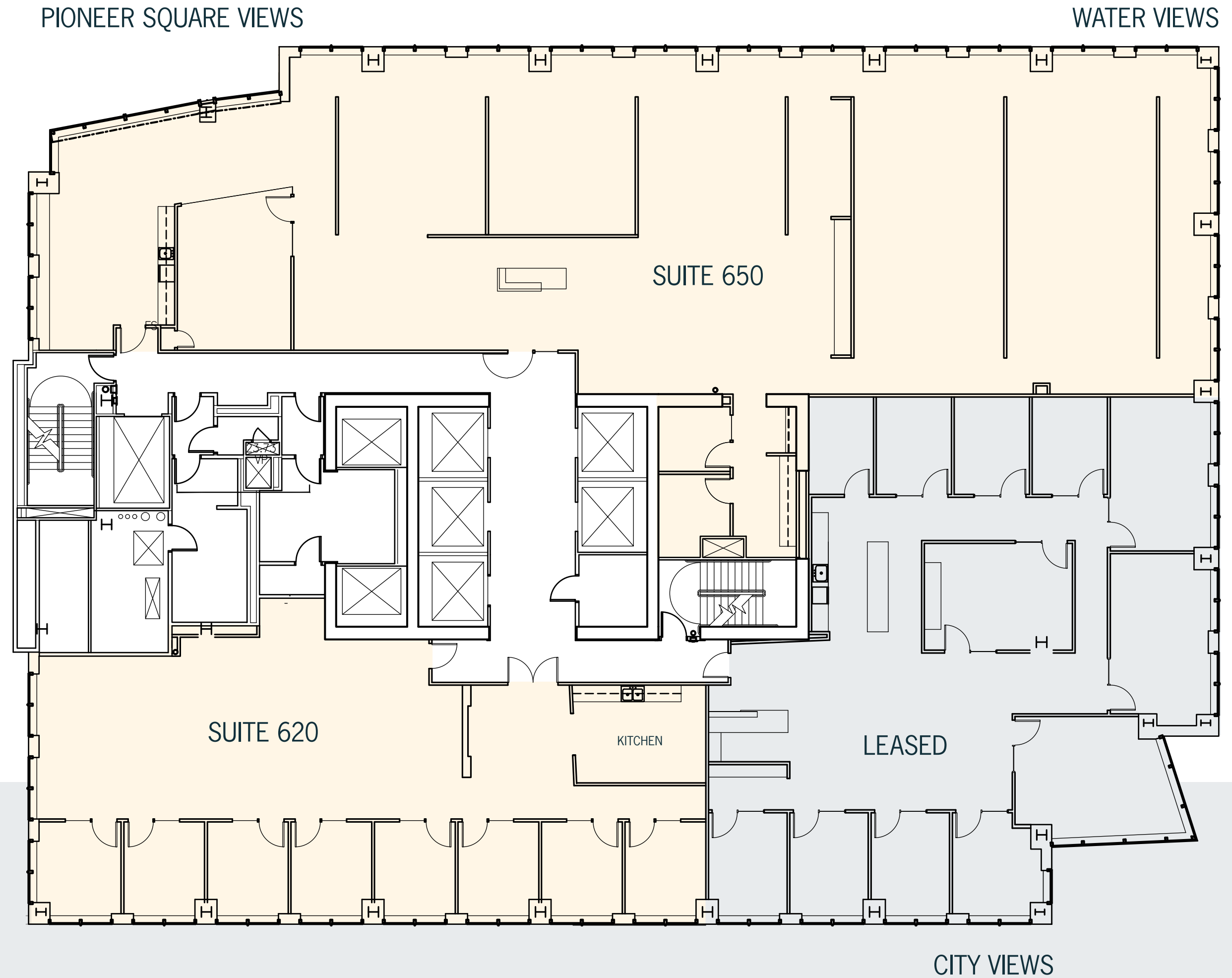
7,177 RSF

- Available now
- Polished concrete floors
- Open floor plan

6TH FLOOR | SUITE 620

3,356 RSF

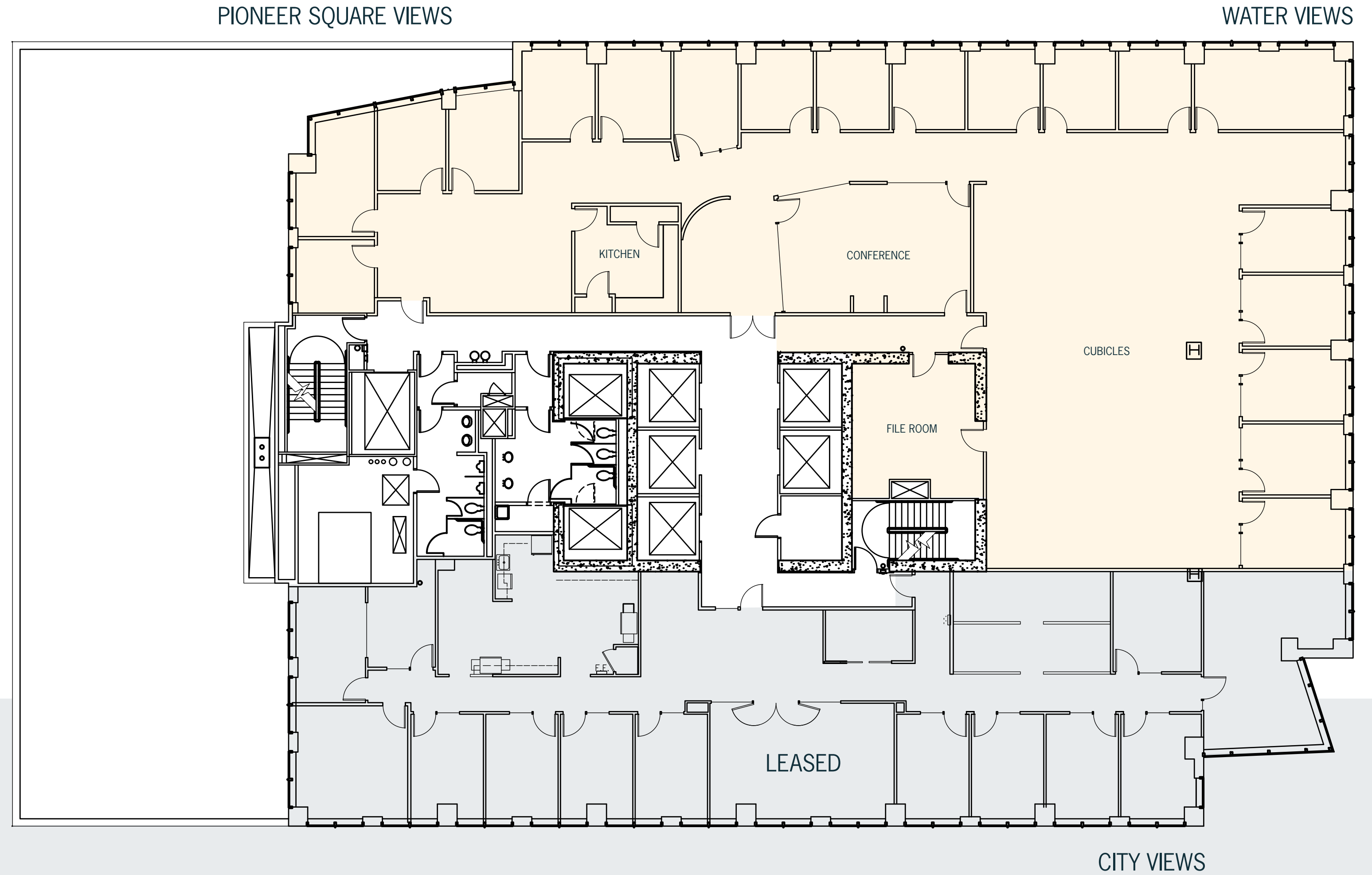
- Available now
- Suites combined for 10,533 RSF
- New lobby



5TH FLOOR | SUITE 501

8,995 RSF

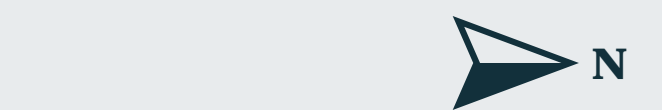
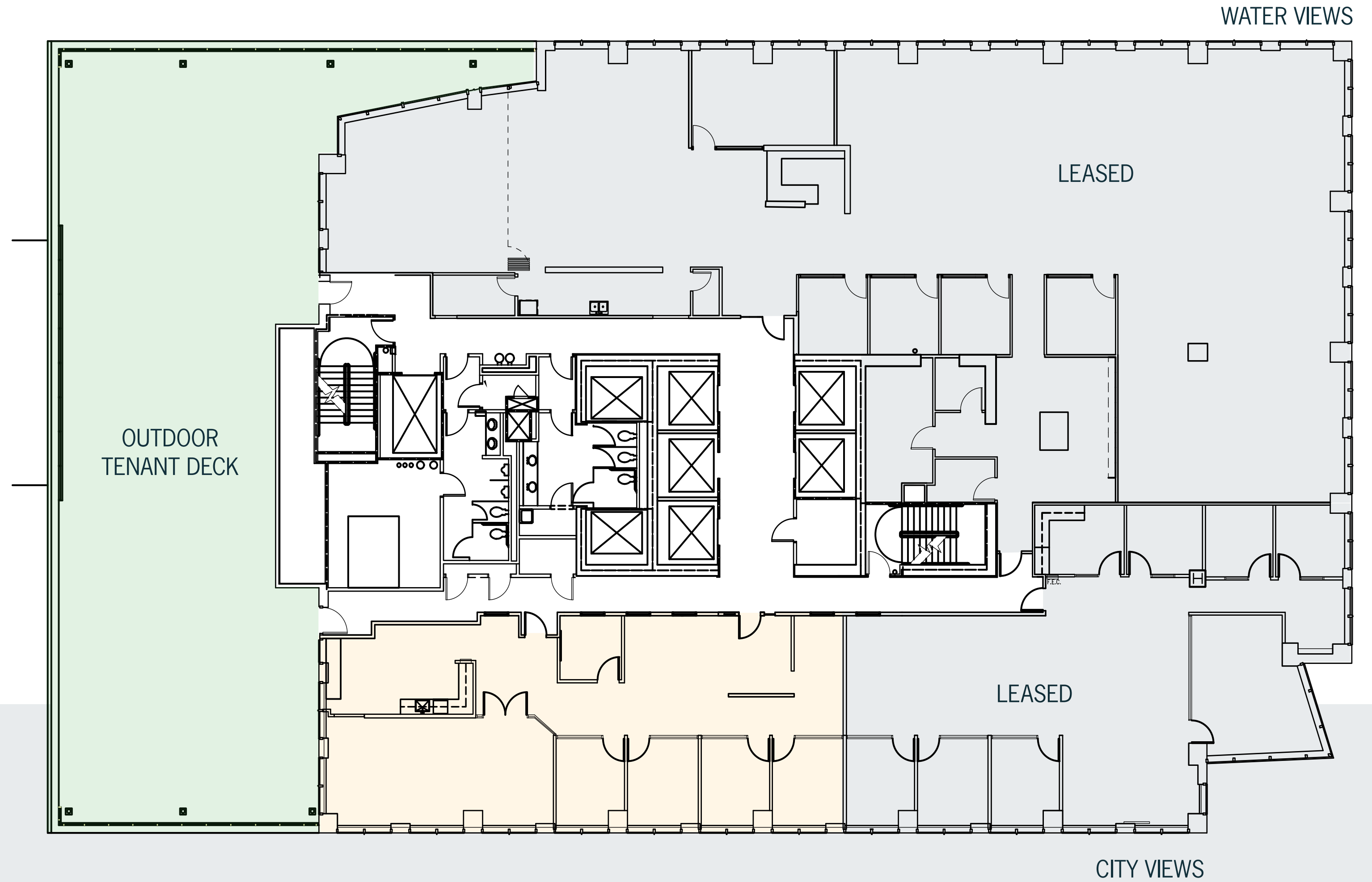
- Available now
- New lobby
- Law firm buildout



4TH FLOOR | SUITE 450

2,580 RSF

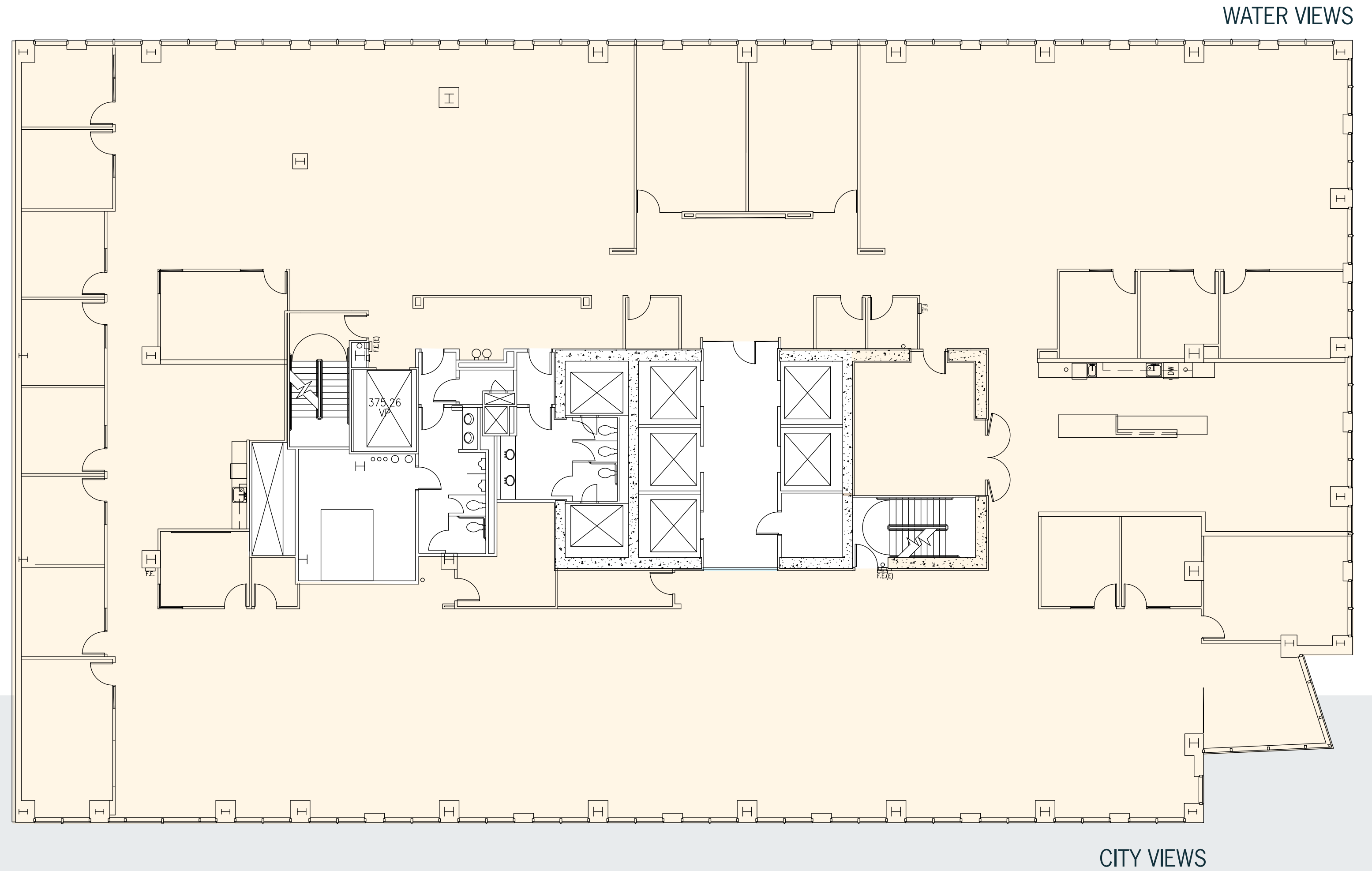
- Available now
- Elevator lobby exposure



3RD FLOOR | SUITE 300

19,125 RSF

- Available now
- Open ceiling, tech build-out
- Full floor



1ST FLOOR | SUITE 103

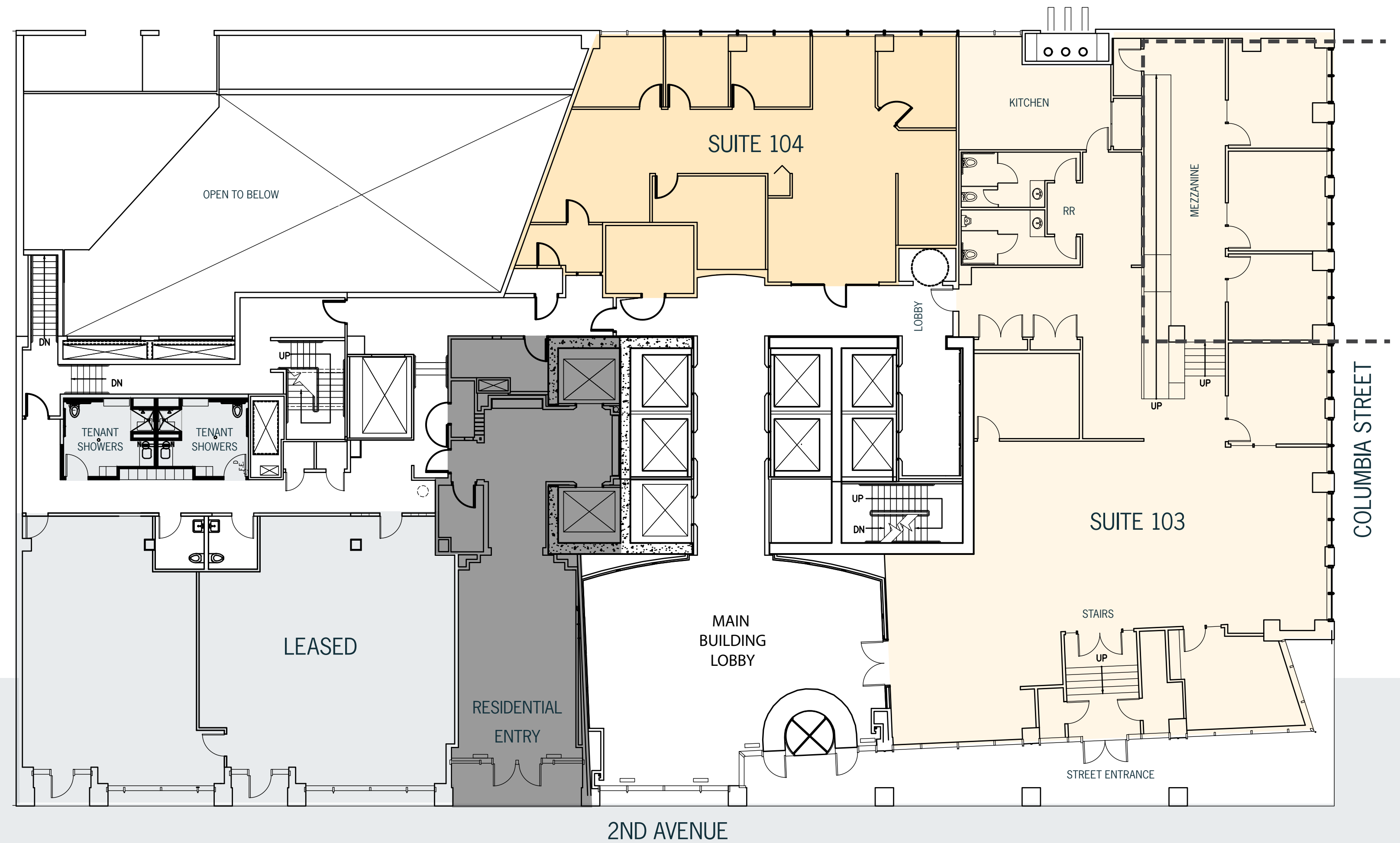
5,469 RSF

- Available now
- Street-level office, retail, or bank space
- Former bank branch

1ST FLOOR | SUITE 104

1,997 RSF

- Available now
- Street-level office, retail, or bank space
- Law firm buildout



Nuveen is dedicated to transforming the workplace into an immersive, collaborative hub for today's professionals. Through our hospitality-driven approach, we offer enriching experiences and services that prioritize the wellbeing of all tenants and visitors.



MILLENNIUM TOWER

nuveen

NEWMARK

unlock the opportunity

Jesse Ottele

Executive Managing Director

206.452.4529

jesse.ottele@nmrk.com

Cavan O'Keefe

Senior Managing Director

206.395.2903

cavan.okeefe@nmrk.com

The information contained herein has been obtained from sources deemed reliable but has not been verified and no guarantee, warranty or representation, either express or implied, is made with respect to such information. Terms of sale or lease and availability are subject to change or withdrawal without notice. MP-586