
SUMAS INDUSTRIAL BUILDING

2025 LEASE SPECIAL



**377 West 2nd Street
Sumas, WA 98295**

- **For a 3+ year lease fully executed on or before December 31, 2025**
 - **Monthly Base Rent of \$2,000 plus NNN for the balance of 2025, \$2,500 for 2026 and \$3,000 for the remainder of the lease term (up to 5 years total term).**
- 4,308+ RSF available
- 3 DH doors (varying dock heights)
- Small office space with the balance warehouse
- Call agent to tour or for more information

The information contained herein has been obtained from sources we deem reliable. We do not, however, guarantee its accuracy. All information should be verified prior to purchase or lease.

THE BEDFORD GROUP, INC.

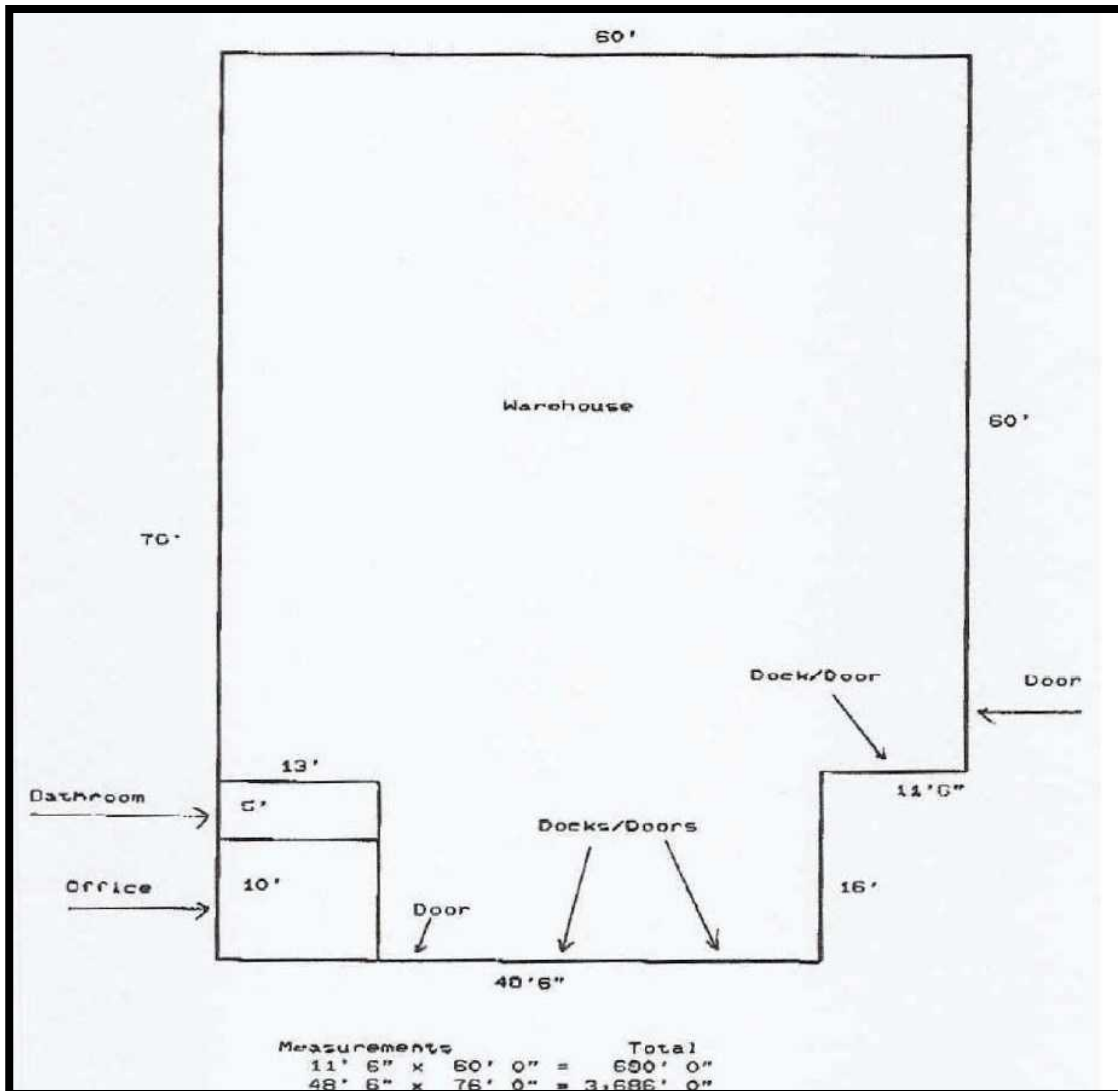


For more information contact

Erin Sundean

Commercial Real Estate Services

4120 Meridian, Suite 290-D • Bellingham, WA 98226
Telephone: (360) 647-0100 • Facsimile: (360) 647-2400 • Website: thebedfordgroupinc.com



Measurements are approximate

The information contained herein has been obtained from sources we deem reliable. We do not, however, guarantee its accuracy. All information should be verified prior to purchase or lease.



THE BEDFORD GROUP, INC.

For more information contact

Erin Sundean

Commercial Real Estate Services

4120 Meridian, Suite 290-D • Bellingham, WA 98226
 Telephone: (360) 647-0100 • Facsimile: (360) 647-2400 • Website: thebedfordgroupinc.com



The information contained herein has been obtained from sources we deem reliable. We do not, however, guarantee its accuracy. All information should be verified prior to purchase or lease.



THE BEDFORD GROUP, INC.

For more information contact

Erin Sundean

Commercial Real Estate Services

4120 Meridian, Suite 290-D • Bellingham, WA 98226
Telephone: (360) 647-0100 • Facsimile: (360) 647-2400 • Website: thebedfordgroupinc.com