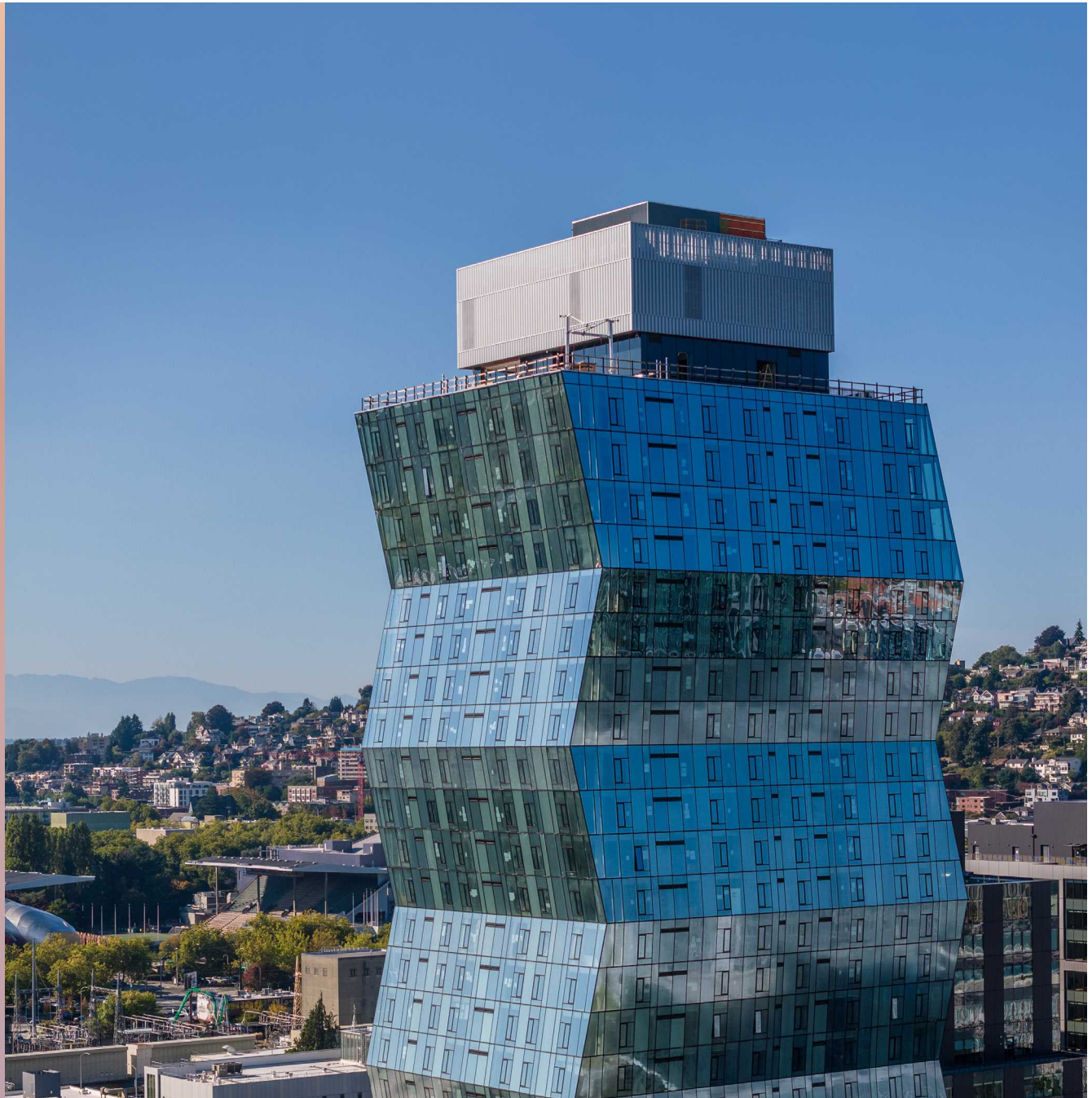


# Retail Available

757 Thomas Street  
Seattle, WA 98109



SKYGLASS  
TOWER



Avery Connell | Tiffini Connell

**WCCR** | West Coast  
Commercial  
Realty

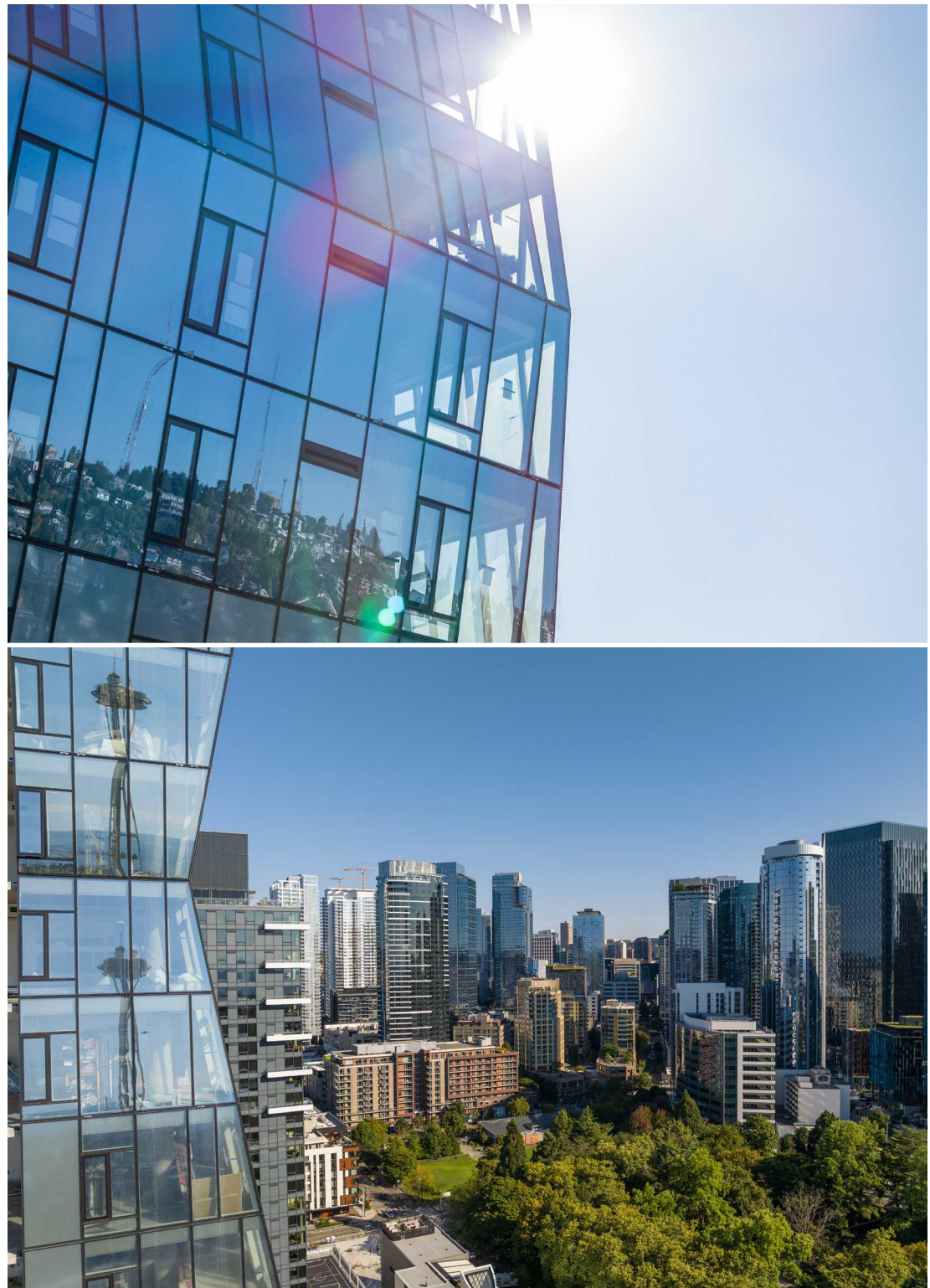


# Position your business at Skyglass, a striking new mixed-use development in the heart of Seattle's South Lake Union neighborhood.

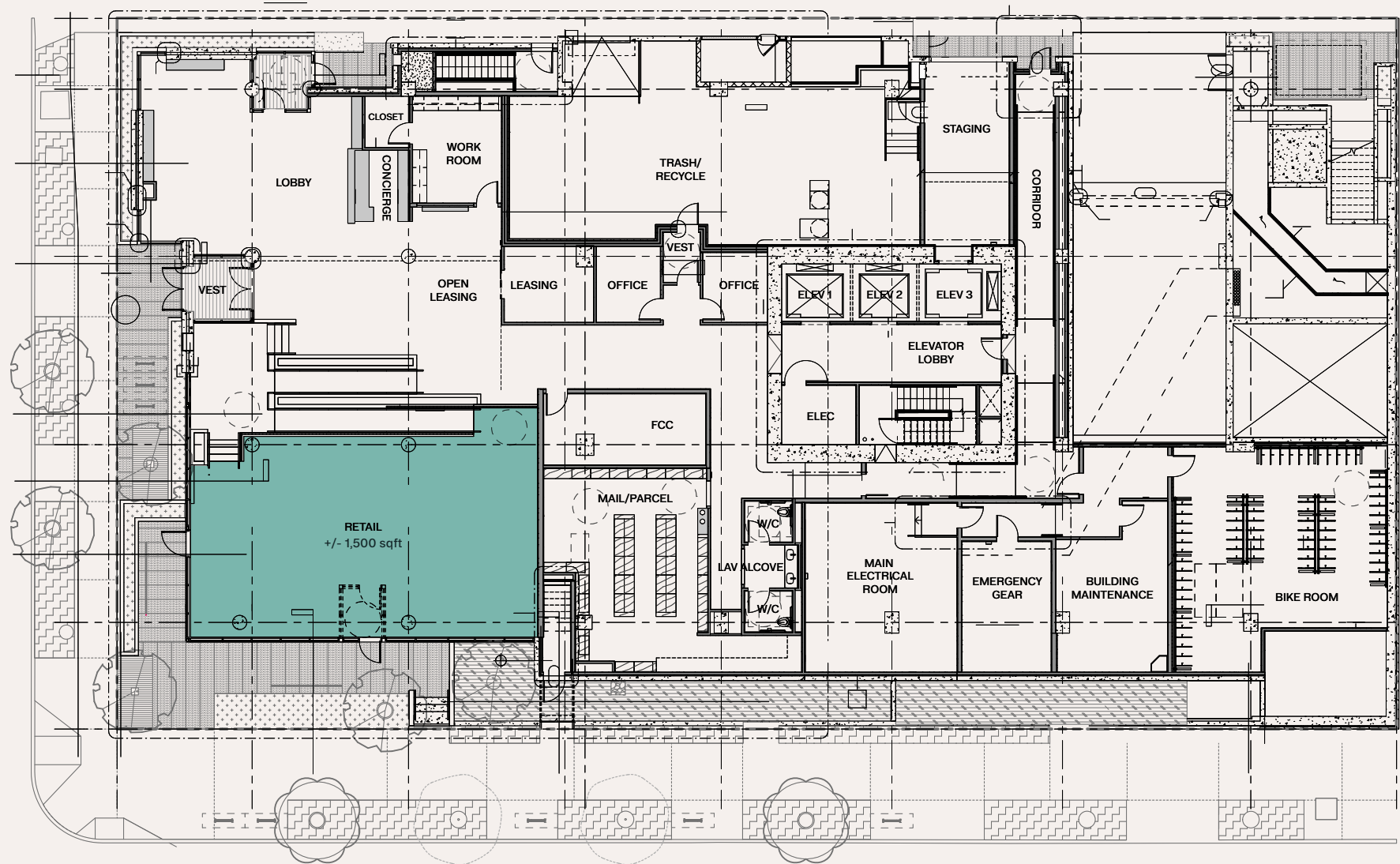
Surrounded by tech professionals, residents, and visitors daily, Skyglass offers unparalleled visibility and built-in foot traffic at the epicenter of one of Seattle's most dynamic neighborhoods.

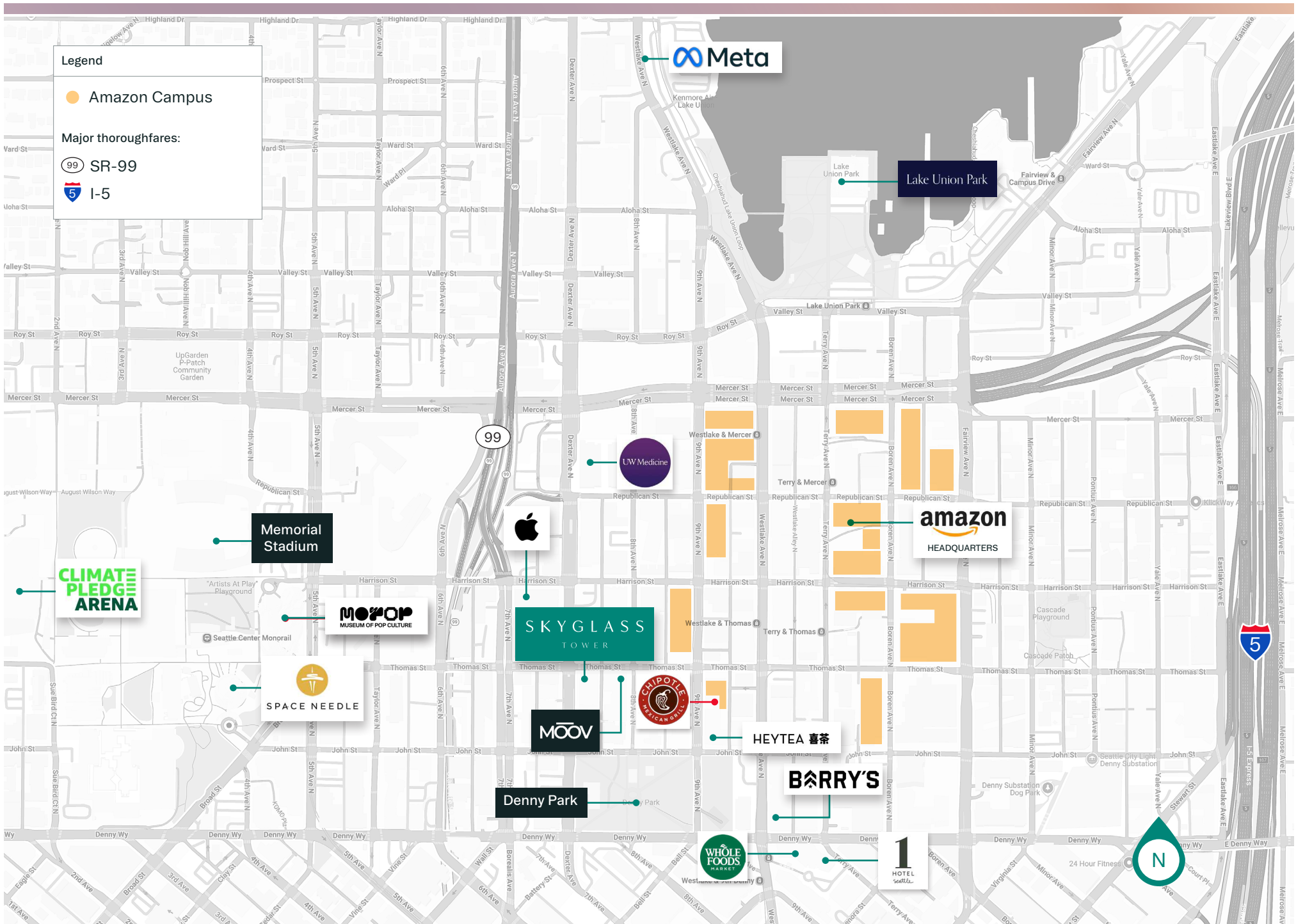
Steps from Amazon's global headquarters, the Lake Union waterfront, and a dense concentration of high-rise apartments, Skyglass offers retailers the opportunity to thrive in a vibrant, walkable, and high-income trade area.

The +/- 1,500 square foot ground-floor retail space is currently integrated within the residential lobby. The landlord is seeking any tenants with a concept that would work well with a direct connection to the lobby such as coffee or cafe operators.



# FLOOR PLAN









#### AVERAGE HOUSEHOLD INCOME:

1 mile: \$142,682

2 Mile: \$138,773



#### TOTAL POPULATION:

1 Mile: 93,487

2 Mile: 188,866

#### 2029 PROJECTION:

1 Mile: 96,265

2 Mile: 193,799



#### TRAFFIC COUNTS:

37,403 vehicles per day  
at Battery S. Tunnel and Thomas St N

29,193 vehicles per day  
at Denny Way and Dexter Ave N W

27,575 vehicles per day  
at Denny Way and Taylor Ave N E





# SKYGLASS

---

757 Thomas Street  
Seattle, WA 98109

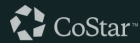
**Avery Connell**

avery@wccommercialrealty.com  
206 475 9637

**Tiffini Connell**

tiffini@wccommercialrealty.com  
206 854 1925

DISCLAIMER: The above information has been secured from sources believed to be reliable, however, no representations are made to its accuracy. Prospective tenants or buyers should consult their professional advisors and conduct their own independent investigation. Site plan and configuration are subject to change. Properties are subject to change in price and/or availability without notice. West Coast Commercial Realty, LLC



[skyglassapartments.com](http://skyglassapartments.com)

**WCCR** | West Coast  
Commercial  
Realty

206 283 5212  
[wccommercialrealty.com](http://wccommercialrealty.com)

