

# FOR LEASE OFFICE SUITES



📍 1221 W Ironwood  
Drive, Coeur d'Alene,  
ID 83814

Offered at  
**\$1 PSF, NNN**

## IRONWOOD NORTH

Quality, multi-tenant, professional office/medical building located within Coeur d'Alene's Ironwood Medical Corridor, between Northwest Blvd and Highway 95, Riverstone Village, and the Kootenai Health Campus. The building offers plenty of parking and a good tenant mix. Leases are full service except for tenants interior janitorial.

- Suite 100 is 2,688 sf

[ccimteam.com](http://ccimteam.com)



**ROB KANNAPIEN**  
208.704.3832  
robk@ccim.net  
**CCIMTEAM.COM**

**CORY EHRGOTT**  
509.499.9968  
coryehrgott@cbsr.com

Data is deemed reliable, no warranties or representations expressed or implied. Broker not responsible for changes, errors, omissions, or prior sale without notice. All critical measurements shall be done by Lessee or Buyer.

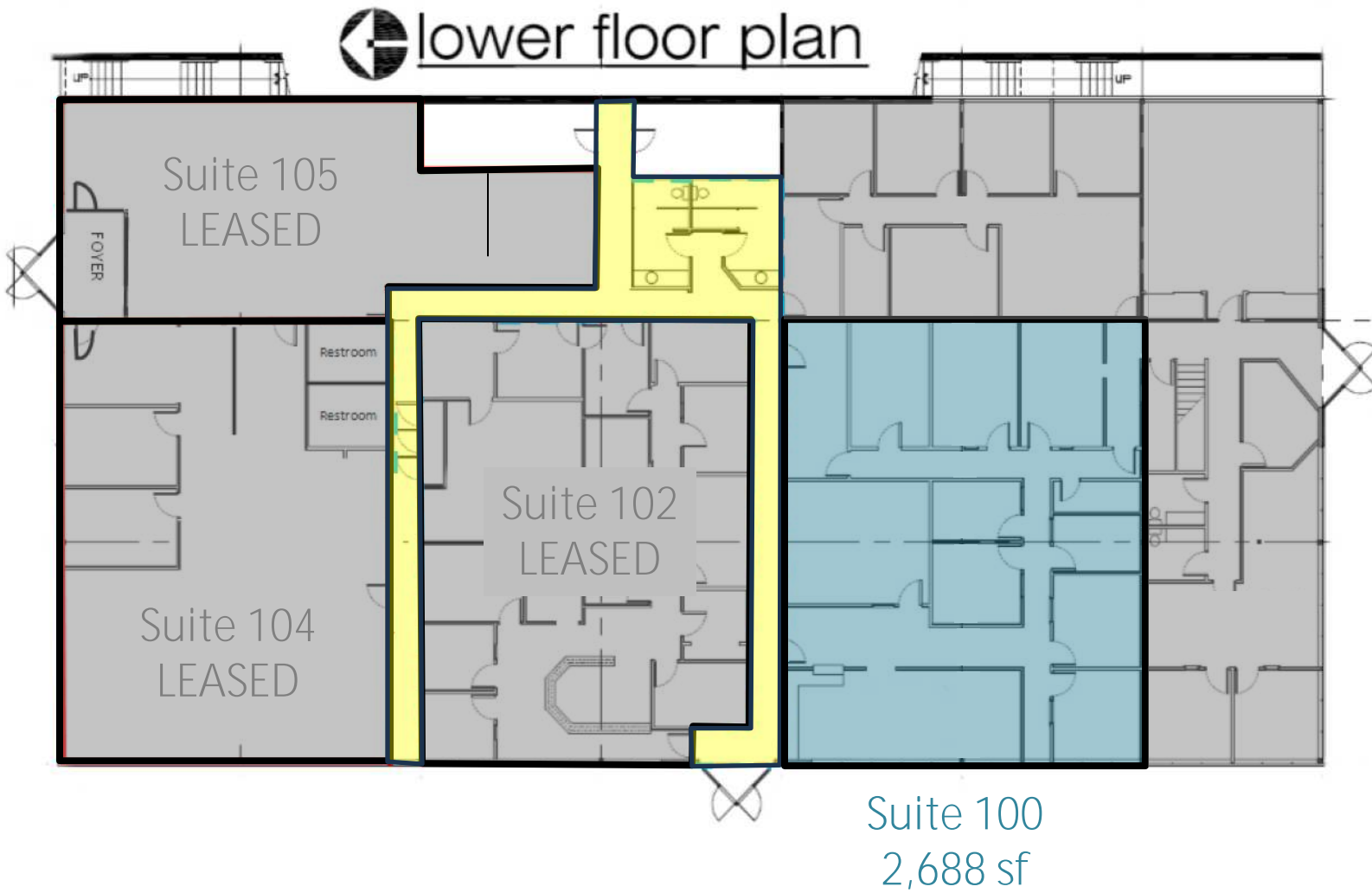


**COLDWELL BANKER  
COMMERCIAL**  
SCHNEIDMILLER REALTY  
2000 Northwest Blvd  
Coeur d'Alene, ID 83814









Shared Common Area and Restrooms





**ROB KANNAPIEN**  
**CORY EHROGOTT**

208.704.3832

509.499.9968

robk@ccim.net ccimteam.com

coryehrogott@cbcsr.com



**COLDWELL BANKER  
COMMERCIAL**  
SCHNEIDMILLER REALTY