



HIGHLINE MEDICAL PAVILION

*Move-in Ready
Medical Space for
Lease in Burien, WA*

16233 SYLVESTER RD SW

HIGHLINE MEDICAL PAVILION



PROPERTY HIGHLIGHTS

Direct internal building access to St. Anne Hospital

Move-in ready medical space

Total of 8,580 RSF available between three suites

Suites G-10, G-30, and G-70 available

Abundant surface & garage parking

On the campus of Virginia Mason Franciscan Health's St. Anne Hospital

Easy access from SR-518, SR-509, I-405, and I-5

Call brokers for rates and availability

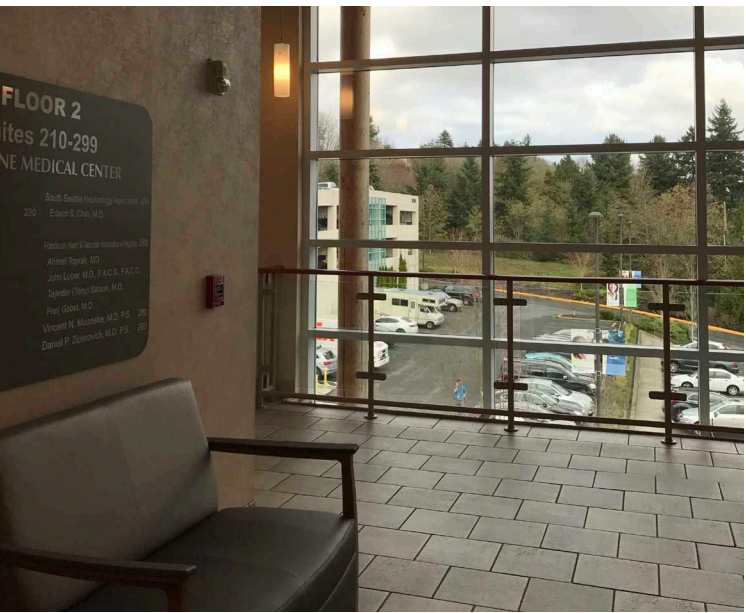
8,580 RSF

TOTAL AVAILABLE

THREE

AVAILABILITIES


HIGHLINE MEDICAL PAVILION



HIGHLINE MEDICAL PAVILION



**VIRGINIA MASON
FRANCISCAN
HEALTH'S ST. ANNE
HOSPITAL CAMPUS**



**THREE TREE
MEDICAL ARTS
BUILDING**



**HIGHLINE
MEDICAL
PAVILION**

**SW SEATTLE
AMBULATORY
SURGERY CENTER**



SUITE G-10 FLOOR PLAN

2,316 RSF

AVAILABLE

AVAILABLE

WITH 30-DAYS NOTICE



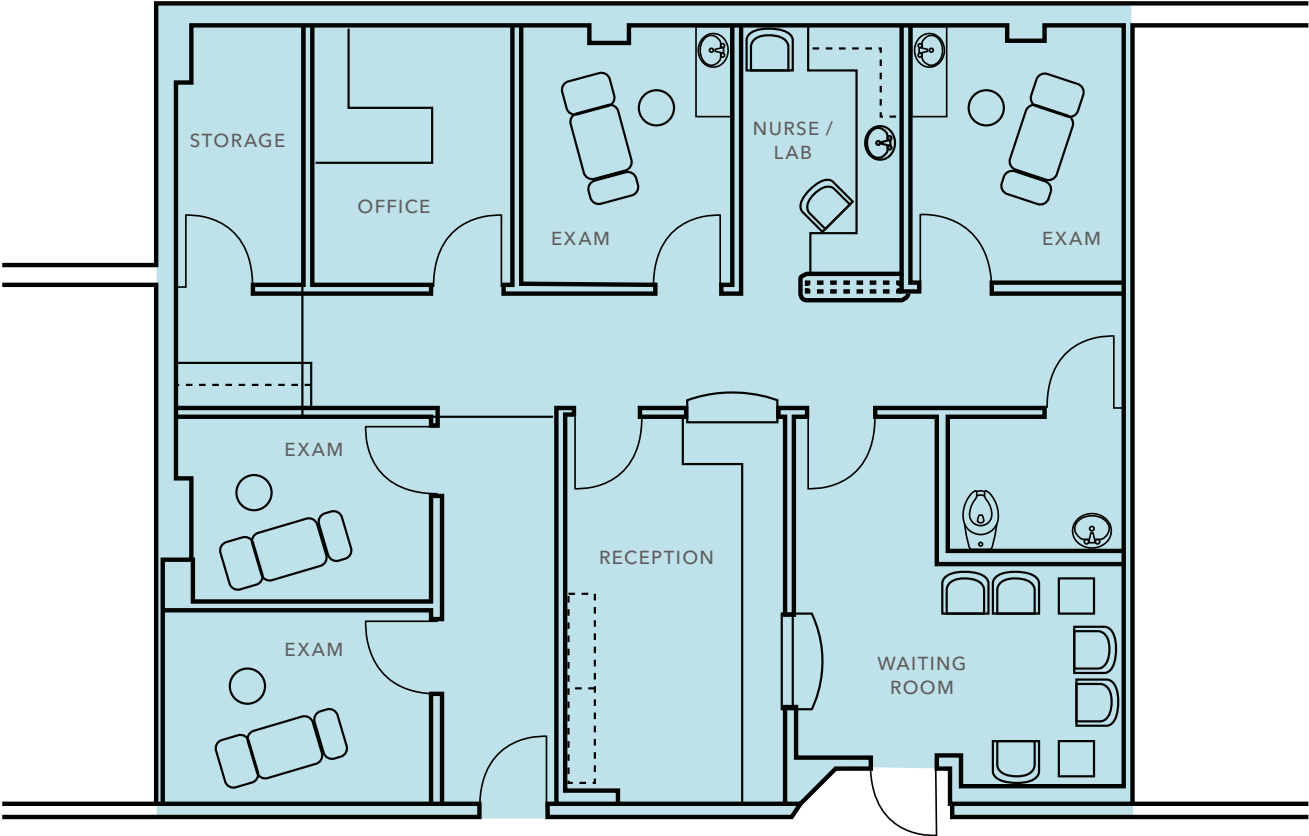
SUITE G-30 FLOOR PLAN

1,546 RSF

AVAILABLE

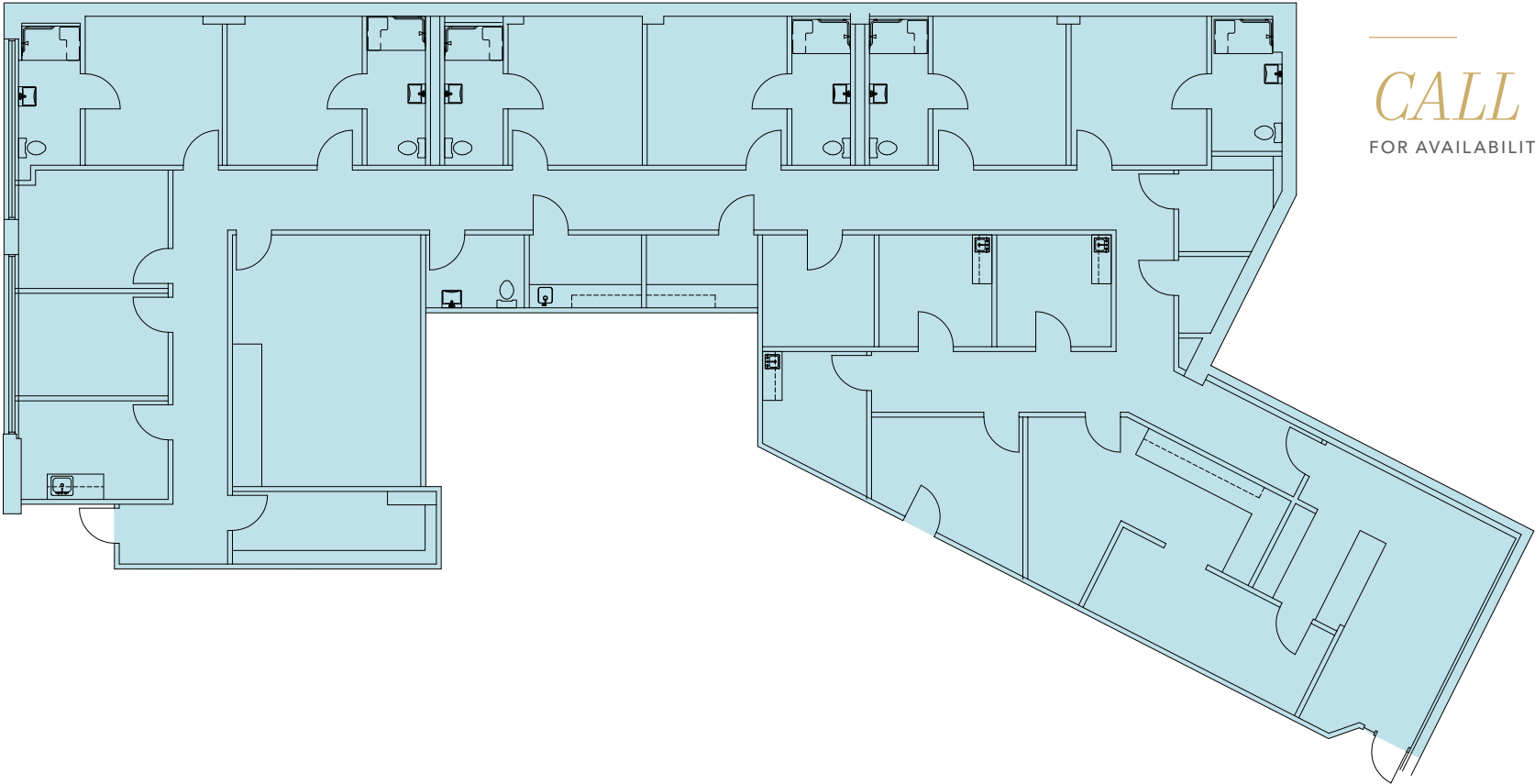
MOVE-IN

READY



TOUR SUITE G-30

SUITE G-70 FLOOR PLAN



4,718 RSF

AVAILABLE

CALL

FOR AVAILABILITY

HIGHLINE MEDICAL PAVILION

Exclusively leased by

BRIAN CLAPP

Executive Vice President

206.248.7316

brian.clapp@kidder.com

SPENCER CLAPP

First Vice President

206.248.7427

spencer.clapp@kidder.com

KIDDER.COM

This information supplied herein is from sources we deem reliable. It is provided without any representation, warranty, or guarantee, expressed or implied as to its accuracy. Prospective Buyer or Tenant should conduct an independent investigation and verification of all matters deemed to be material, including, but not limited to, statements of income and expenses. Consult your attorney, accountant, or other professional advisor. All Kidder Mathews designs are the sole property of Kidder Mathews. Branded materials and layouts are not authorized for use by any other firm or person.

